

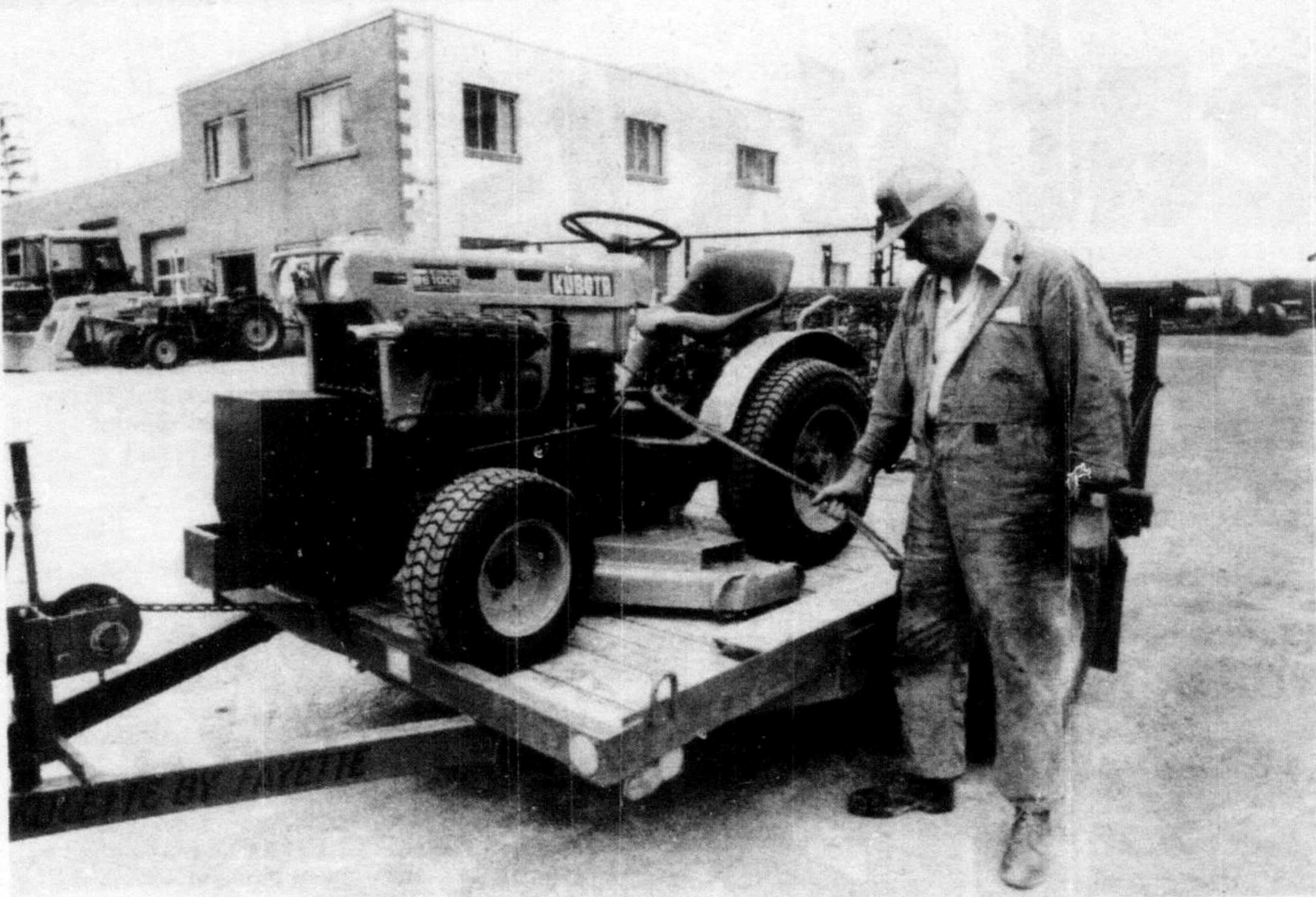
Good planning can double yield

By H. Tiessen
Department of
Horticultural Science
University of Guelph
When choosing vegetables to grow, consider the size of garden, family preference, and the garden location. With good planning, the yield of the average family garden can be doubled. When selecting a place

for the garden, choose the area with the most sunlight, good drainage, and good soil. If the garden is small, soil conditions can be improved by adding topsoil, peat, manure, or some other materials. You can obtain higher yields from crops grown in small areas with better environmental conditions, than from larger, shaded, and poorly-drained areas. A minimum of six hours of sunlight each day is necessary. If the only sunny areas around your home are patios or open driveways, plants can be grown in boxes of 30 to 45 cm. of topsoil.

ions, than from larger, shaded, and poorly-drained areas. A minimum of six hours of sunlight each day is necessary. If the only sunny areas around your home are patios or open driveways, plants can be grown in boxes of 30 to 45 cm. of topsoil.

(Continued on pg. 11)



THERE GOES ANOTHER garden tractor, from the extensive display at Milton Equipment, Steeles Ave. Claude Twiss is all set to deliver this Kubota tractor to a

Milton home. Now that the spring weather is (finally) here, local agencies report booming sales of lawn and garden equipment.

Raspberries give good return

By W. D. Evans
Department of
Horticultural Science

Red raspberries are one of the most perishable, most prized and most scarce of the temperate zone fruits. They are scarce primarily because of the cost of harvest and their perishability. If raspberries were not so perishable, they would probably be produced in cheap labor areas and shipped here. However, in Ontario, we can grow raspberries to perfection and the only way we can be assured of a supply is to grow them ourselves.

Raspberries are not difficult to grow. They probably give a greater return for labor expended than any other fruit crop. And well-maintained raspberry planting should last at least 10 years. But, there are a few important things to know before growing this crop.

Hardiness is a problem affected by a number of things. Varieties differ in hardiness and only recommended varieties should be grown. Trent, Boyne, Comet, Newburgh and Latham varieties have been widely

tested and should be planted in preference to other types. Since quality of planting stock affects the life of a planting, plants should be bought from a reputable nurseryman.

Poor growing conditions also affect the hardiness of the raspberry plant. Poor soil drainage is the main offender. It results in a poor root system, causing the plant to be weak when winter arrives.

Plants are also injured if they grow too vigorously when winter arrives. This condition usually results from the application of fertilizers late in the summer.

The choice of planting location is important. Air drainage is desirable but not essential. More important is the susceptibility of rasp-

berries to a soil-borne disease harbored by the roots of tomatoes, potatoes and peppers. Avoid planting soil where these crops have been grown recently.

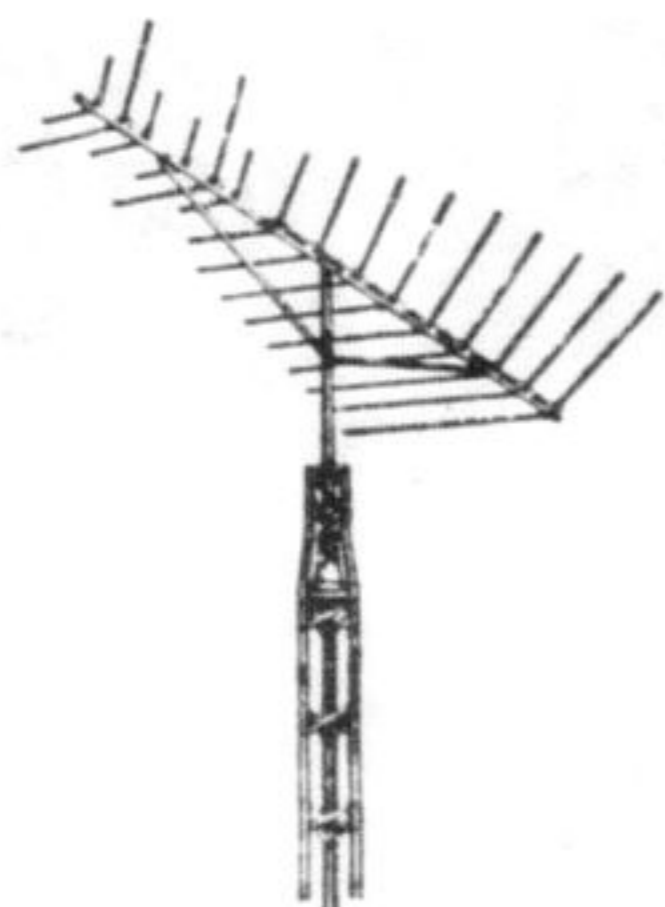
Raspberry rows should not be closer than seven feet apart and rows should not be wider than 18 inches. These recommendations are aimed at controlling disease. It is also important to thin canes annually to prevent rows from becoming too dense. Thinned rows mean larger fruit and less disease. Planting distance in the row should be between 18 to 24 inches. Suckers from these plants fill out the row to the 18-inch width mentioned earlier.

In the first two years, raspberry plants should not be allowed to bear

fruit. Removal of the blossoms will prevent fruit from setting. This allows the row to become established more quickly as the young plants will grow more vigorously.

RAISE MOWERS

Raise the blade of your lawn mower to 1½ - 2 inches for a healthier lawn. More frequent mowing will be necessary, but the turf won't burn as easily.



Gene's Antenna Service

FORMERLY RICHARDSON'S ANTENNA SERVICE

- ANTENNA INSTALLATIONS
- REPAIR SERVICE
- ROTATOR SERVICE
- ANTENNAS REMOVED

DON'T SELL YOUR TOWER MOVE IT WITH YOU!

ALL WORK GUARANTEED

878-3400

465 Main St. Milton

After Hrs: 878-5291



KUBOTA

something in between



unmatched for
economy and
adaptability!

Model 6100 TURF

48" mower, 3 cylinder diesel, Hydraulics and 3 point hitch, 1 3/8 power take-off.

**MILTON EQUIPMENT
COMPANY LIMITED**

3163 Steeles Avenue, Milton

878-2121