

Milton to Toronto in 1981

\$70 million to be spent on new GO Train service

GO Train service between Milton and Toronto is scheduled to be inaugurated in the spring or fall of 1981, pending completion of the necessary work.

Making the announcement was Tom Henry, information officer at GO Transit.

He said more than \$32 million had been earmarked for the commuter project and another \$38 million had been allocated to upgrade Union Station and its approaches.

The GO Transit and Toronto Area Transit Operating Authority (TATO) has set aside \$30,813,000 of the \$32

million for material acquisition and construction work on the CPR line between Milton and Toronto and the balance, \$1,353,000 for the cost of engineering, project management and accounting. The four-year project is being done in concert with Canadian Pacific.

Henry said upgrading some of the crossings west of Cooksville has already begun. He said the improving of the line and the improvements to Union Station are tied together. Commuter service to Milton can't begin until both are finished.

The work at Toronto station is well underway.

Henry said the work at the station will enable it to handle an increased number of commuters at peak times. Costing \$8 million, the concourse will include retail stores, offices, a mezzanine, ticket booths and a waiting facility.

Situated in the old post office adjacent to Union Station, the structure is half complete.

Halton Regional Chairman Ric Morrow said during a recent tour of the new facility, "This will be really something."

"There is so much, I can't believe it."

Henry said the work is necessary because Union Station is already operating at capacity at peak times.

However, the main part of the expansion will be the approaches to the station itself. Projected to cost \$28 million, this is the work which is vital, he said.

Once finished, it will be able to accommodate the 3,000 to 5,000 commuters which the Milton-Stratford line will bring into the city.

Construction work on the line itself will upgrade the tracks and switching

equipment.

Henry said TATO expects to make a decision next spring where it will locate the station in Milton.

He said three sites have been targeted.

Next April is projected to be the month when a decision will be made and construction of a station will follow.

Milton will be the terminus of the new GO rail service.

Going east the stops will be Meadowdale West, Streetsville, Erindale, Cooksville, Dixie Road, Kipling and then Union.

A one-way trip is estimated to take between 40 to 45 minutes.

Henry said the fastest time the express GO bus makes the distance between Milton and downtown Toronto is about an hour.

Milton is already extensively serviced by GO buses.

Henry said there is express service five days a week between Monday and Friday. There are four trips each way at rush hour.

Then there is the seven-day service. On weekdays there are seven departures from Milton to Toronto and eight returns he said.

Saturdays there are five

departures and returns and on Sundays, three trips both ways.

He said the express bus service would be drastically cut once the rail service begins.

Although Henry said it is not the policy of TATO to run buses during rush hour periods, the service was extended into Milton to meet a growing need.

GO Train service to Milton has been talked about since 1974.

If all goes well, Henry said it will likely become reality in 1981.

TATO officials anticipate the number of people using the service to grow to 8,000 by 1986.

Henry said the service will only operate during the rush hour period.

TATO spokesman said, "Eventually we could have full service along the line, but financially we can't do it right now."

Work on the new concourse at Union Station is a year ahead of schedule and \$4 million under budget, TATO spokesman said.

Next blood clinic Thursday Nov. 16

Milton's next regular blood donor clinic is Thursday, Nov. 16 at the Holy Rosary Hall on Martin St.

Red Cross sponsors invite all regular donors to attend and help swell the blood bank. New donors are always welcome, too.

6:30 to 8:30 p.m. and the quota is 300 donations. Officials point out there is plenty of free parking at the hall.

The last clinic in Milton was held in August and fell short of its goal.

—Don't forget to vote in Milton's civic election next Monday, Nov. 13.

WHEN FALLING TEMPERATURES MEAN A RISE IN COSTS ... CALL BAILEY FUELS

Experts in Home Comfort Services

- Furnaces installed, cleaned & serviced
- 24 Hour emergency plan
- Equalized billing plan
- Complete line of climate control equipment
- Comprehensive parts replacement plan

Automatic delivery of propane & heating oil. In-home & in-office fuel monitoring & bypasses.

BRUCE BELL 878-4821

No. 5 Sideroad Milton

All about People

Halton Board of Education has named a new vice-principal for Martin W. I. Dick middle school in Milton. Rod Collard begins his new duties there on Jan. 1, succeeding Sandra Birthelmer who is retiring.

Renaissance founder and local evangelist Ken Campbell of Milton was having fun with the numbers game last week, after a TV debate with the outspoken Charles Templeton on the Ontario Educational TV network show "Speaking Out". They discussed the subject of banning objectionable books in schools.

Campbell called for book selection policies in public schools which would emphasize non-controversial literature, to avoid offending parents committed to the Judeo-Christian ethic. Templeton said there should be no censorship of books in the system.

At the end of the show, Templeton had a slight edge in the show's call-in vote, 323 to 294 votes and as the two men left the studio, Templeton told Campbell he hoped he would remember the vote and cite these results in future when claiming to speak for a majority of the people. The next day, though, the final tally of the votes came out and Campbell won the debate, 870 to 538.

"That represents 61 per cent who support the Renaissance position," chuckled Campbell. "Surely it is time the public school system responded to that nearly two-thirds majority and established policies reflecting respect for Judeo-Christian values in manners and morals."

This column didn't set out to publish long lists of names, but we're going to change the policy this week in order to tip the editorial hat of gratitude to the many people involved in leading Halton's 4-H clubs. Saturday night the top members of the clubs were recognized, but what about the leaders — many of them 4-H graduates who stayed around to help the young people in their educational work.

This week People salutes these leaders: Bob Lasby, Cathy Lasby, Ken Murray, Russell Murray and Tom Parker, Acton Calf Club; Evelyn Gillies, Bill Jackson and Doug Mewhinney, Beef Calf Club; Allison Amos, Don Heath and Bill Stokes, Horse Club; Lorne Ella, Jim Livock and Bert Stewart, Senior Dairy Calf Club; Ken McNabb and Jeff Nurse, Junior Dairy Calf Club; Lyle Stokes and Cecil Patterson, Conservation Club; Doug Gardhouse and Don Harris, Sheep Club; Ken McNabb and Jeff Nurse, Livestock Judging Club; Bill Lasby and Russell Murray, Tractor Club; Kaj Hansen, John Nurse and Cecil Patterson, Field Crop Club; Mark Leahy and Lyle Stokes, Maple Syrup Club.

Hats off, all.

Helping Hands ask for financial help

Halton Helping Hands, in order to meet its budget, is requesting \$2,538 from Milton Council. The request has been turned over to the 1979 Budget Committee.

In a letter to Council Valerie O'Hara, executive director-treasurer of Halton Helping Hands (HHH), said that the figure would represent 20 per cent of their budget, and forms a basis on which the bulk of their budget is based. Mrs. O'Hara said that another 30 per cent of their budget comes from private donations and miscellaneous funding, but the remaining 50 per cent comes directly from the Ministry of Community and Social Services and is calculated on the basis of local and private funding.

Mrs. O'Hara said that the lack of a United Way in Milton forces HHH to seek other forms of funding, including the separation of Oakville and Milton services to make them eligible for increased provincial funding.

HHH provides housekeeping and home maintenance services to senior citizens and the physically handicapped as an alternative to institutional care. Mrs. O'Hara said there are 19 such people in Milton who regularly receive HHH services.



GUS GOUTOUSKI REGION



Special Notice MILTON TRANSIT (Dorset Park Run)

For the convenience of Electors on Polling Day, Monday, November 13th, 1978, the Dorset Park run of the Milton Transit will extend its route for this day only to the Polling Stations at the Milton Memorial Arena. The bus will be running approximately every half hour on its normal route.

Dated this 6th day of November, 1978.

C. Thompson, Clerk

Remembrance Day Saturday

Milton's celebration of Remembrance Day centres around 11 a.m. this Saturday, Nov. 11 — the anniversary time and date of the signing of the armistice that ended the first world war.

Legion officials, with assistance from town council, are

organizing the annual parade to the cenotaph in Victoria Park on Brown St. and Mayor Donald Gordon will chair the service. The parade leaves the Legion Hall at 10:30 a.m. to reach the park by 11 for the solemn service of remembrance. Everyone is welcome.

Earlier in the day, a 9 a.m. service is planned at Evergreen Cemetery, where a wreath will be laid at the memorial just inside the Ontario St. gates. Legion organizers said the brief ceremony would last about 20 minutes.

The Legion will cap off the day with the annual dinner at the Legion Hall Saturday evening.

Poppies are on sale in local stores and some members have been selling them on the streets. The Legion also sponsored a display of war equipment and memorabilia at Milton Mall last weekend.

Treasurer in Milton for forum

About 700 persons, including business leaders from this area, have been invited to attend an open forum in which provincial treasurer Frank Miller will answer questions.

The event will take place on Wednesday, Nov. 22 at the Bayrischer-Hof on Steeles Ave., Milton beginning at 8 p.m.

The evening will begin with Mr. Miller delivering a short talk, followed by a question-and-answer session. Ken McDonald, organizer of the forum, said that the prime purpose of the evening, which could also be described as a "hear-pit session", was to allow questions from the floor as opposed to a speech by Mr. Miller.

Mr. McDonald, who is director of the Halton-Burlington Progressive Conservative Association, noted the evening was primarily aimed at leaders of the business community in Halton Region.

Country Life
Antiques, Inc.
Specializing in quality used furniture
17 WILSON DRIVE, MILTON 878-6661
Tues. to Sat. 10-5 p.m. or by appointment

SHOULD YOUR TRUSTEE BE FULLY KNOWLEDGEABLE ABOUT TOWN PLANNING AND SCHOOL NEEDS? — BILL LAWSON IS — RE-ELECT BILL LAWSON

Halton Board of Education
Ward 2 Milton
Phone 878-6629



As an elected official for 13 years, I have tried to establish a tradition of being

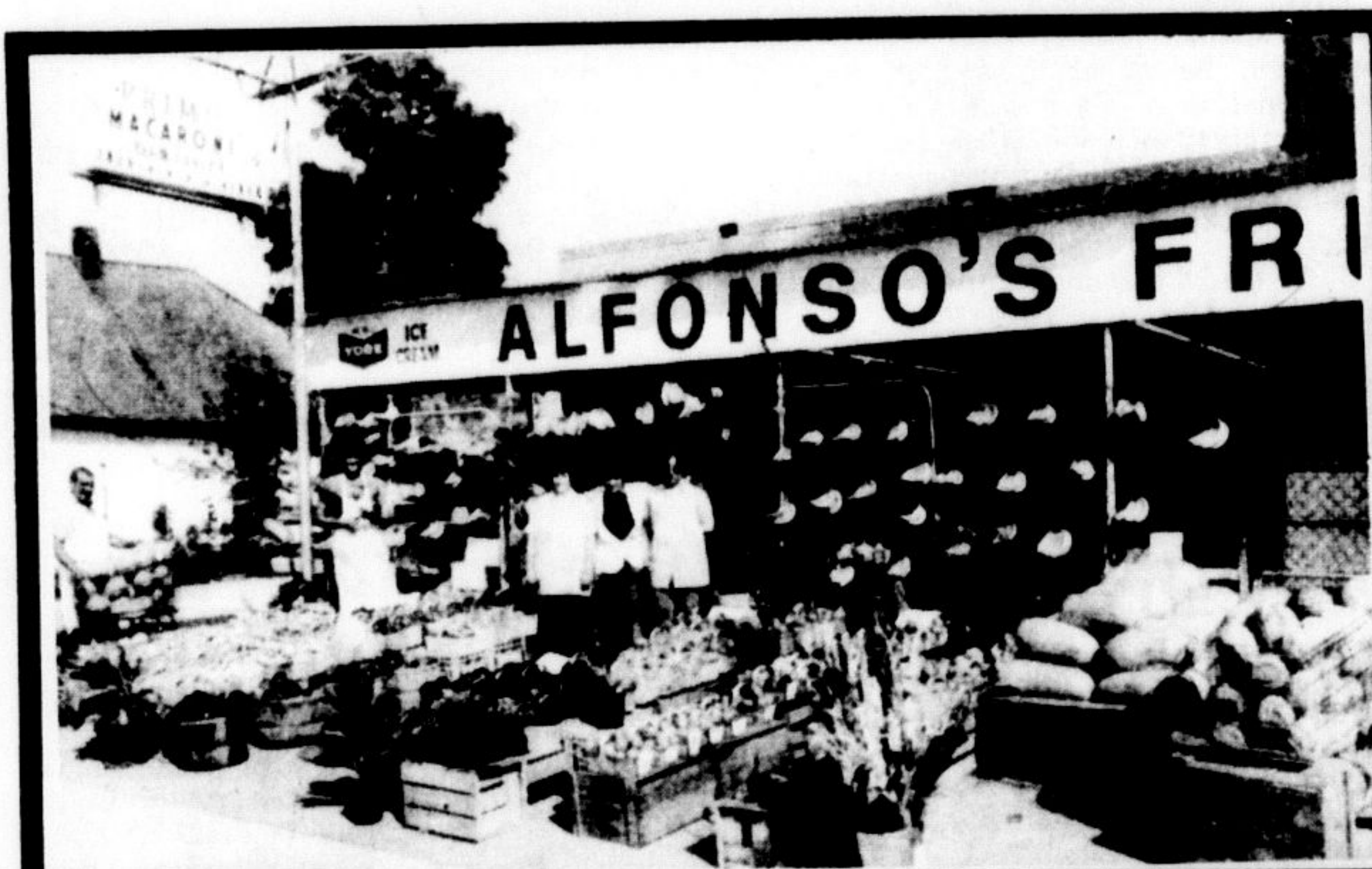
**ACCOUNTABLE
DEPENDABLE
APPROACHABLE
RESPONSIBLE**

**RE-ELECT
MAYOR
DON GORDON**

on Monday, November 13th, 1978

IF YOU CARE FOR MILTON — VOTE
IF YOU REALLY CARE — VOTE GORDON

Polls open at 11:00 a.m. and close at 8:00 p.m.



LOOK Before Shopping and keep your eyes open for better savings on fine foods & compare your prices.

PLEASE TAKE NOTICE
FREE 45 Hr Record
ITALIAN or ENGLISH
with every purchase
\$10.00 worth of groceries
Specials Only
From Wed to Sat 6 p.m.

GROCERIES	Fresh Tender With Backs Attached
Bravo Plum 28 oz. tin	CHICKEN LEGS or BREASTS lb. 99¢
TOMATOES	Fresh "A" Fryers
Bravo 13 oz. Tin	CHICKENS lb. 75¢
TOMATO PASTE	Swift's By The Piece
Bravo Solid Light	COOKED HAM lb. \$1.99
TUNA 7 oz. tin	Swift's Lean Whole Slab
Bravo Plain 14 oz. Tins	Average 10 lb. Each By The Piece
SPAGHETTI SAUCE 2 tins	PEAMEAL BACON lb. \$1.89
York Ice Cream	Fresh Lean
STRAWBERRY or BUTTERSOTCH PIES 1 litre each	LOIN
No Name "White Sliced"	PORK CHOPS lb. \$1.59
BREAD 3 loaves	OR WHOLE LOINS lb. \$1.49
40 oz. Returnable	Average 10 to 12 lbs.
Regular Pre-Priced 59¢ Special Only	Fresh Lean
COCA COLA 3 bottles Plus Deposits	CHUCK or BLADE STEAKS lb. \$1.09
Frozen Pretto	Fresh Daily Schneider's Store Pack
MEAT lb. pkg.	Smoked Sliced Side
RAVIOLIS	BACON ENDS lb. 79¢
Donland's Creamery	Swift's "Eversweet" Vac Pac
BUTTER lb. pkg. \$1.29 Limit: 2 Per Customer	Sliced Side
MEATS	BACON lb. \$1.19
SPECIAL THIS WEEK ONLY	PRODUCE
FOR YOUR FREEZER	BANANAS lb. 10¢
"BEEF"	New Crop Florida White Size 48's
HINDS lb. \$1.39 OR SIDES lb. \$1.19	GRAPEFRUITS 4 for 49¢
Cut & Wrapped Included Phone For Your Order Before November 11, 1978 6 p.m.	Sunkist
Venetian Average 1 lb. Each	LEMONS 3 for 25¢
BABY CHUBS	California
MORTADELLA each \$1.19	BLACK GRAPES lb. 79¢
	No. 1 Ontario Turnips
	RUTABAGAS lb. 9¢
	No. 1 Canada Pkg. 2 lbs. Each
	COOKING ONIONS 19¢
	No. 1 Ontario White
	CAULIFLOWERS each 39¢
	No. 1 U.S.A.
	TOMATOES lb. 33¢

ALFONSO'S FRUIT MARKET FREE DELIVERY
174 MILL ST. 878-2460
OPEN DAILY 8 A.M. TO 10 P.M. SATURDAY 8 A.M. TO 6 P.M. ONLY