

Councillor Rick Day announces candidacy

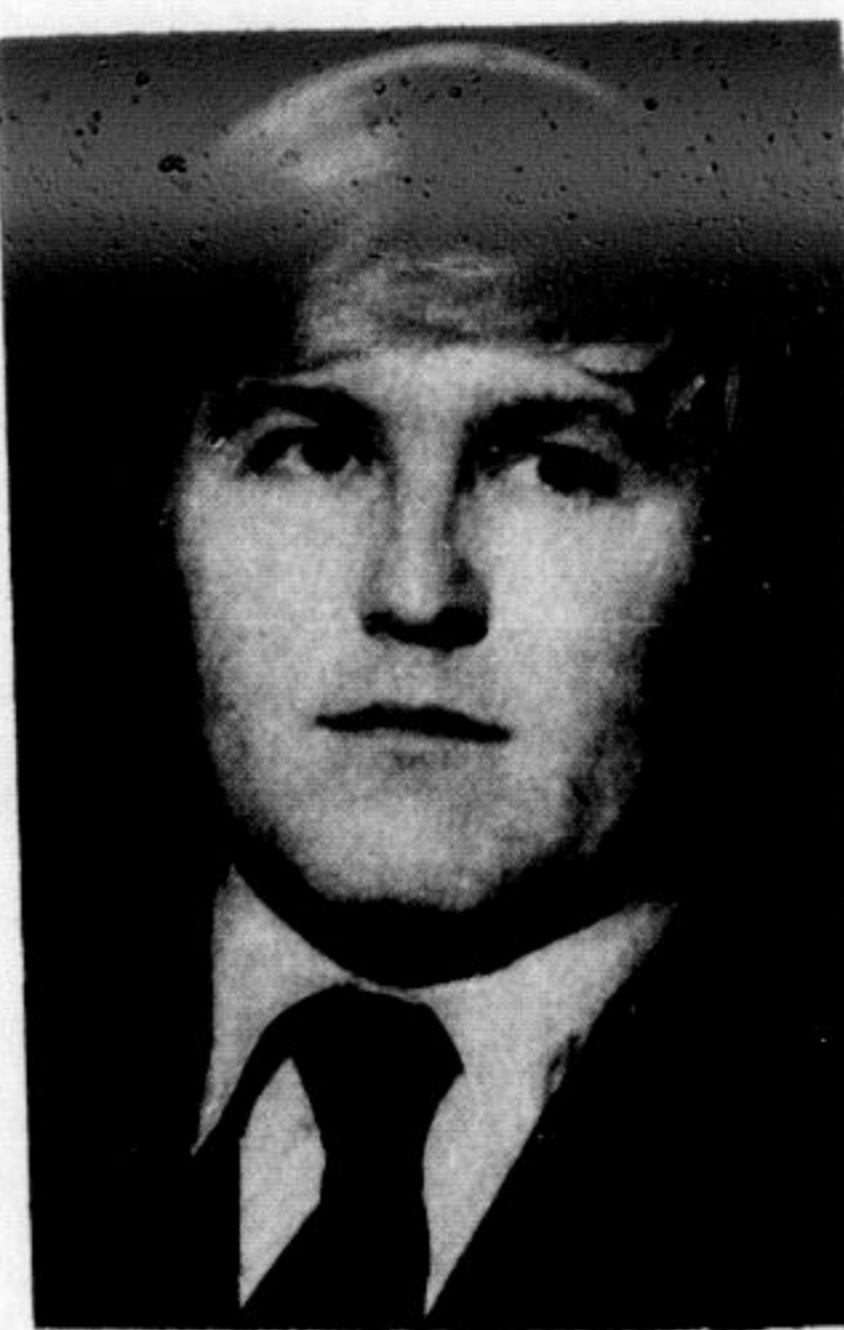
A veteran of nine years on council, Councillor Richard B. Day this week announced he will again be a candidate for a rural Ward One seat on Milton Council in the municipal election to be held Nov. 13.

Day served four years on Oakville Council (1970-73) and is just finishing his fifth year of work on Milton Council, representing the rural ward that was former North Oakville.

"The main challenge before Milton is to keep its head above the water that is coming — from the region and the province," he said.

Day had earlier indicated he might resign from council at the end of this term, to spend more time with his family. He told The Champion he has arranged his schedule to be able to give up a few other things to get more time with his family and keep up the workload on council.

A lawyer, he has a practice in Oakville. He and his wife Karen and two children, aged



RICK DAY

7 and 5, live on Fourth Line.

Recently council made a change in the rural ward set-up and Ward One was expanded with the addition of the former North Burlington area to that ward. Day said he expects the ward will have about 1,500 more voters this election than in the last one.



A POLICE DOG was called in Friday to track down two inmates shortly after they made their escape from Maplehurst Correctional Centre. Halton Regional Police and Milton OPP searched for the missing men for several hours after the break, but were unable to trace the inmates beyond Highway 401. Durham Regional Police picked up the two escapees Saturday morning in Brighton.

Dave de Sylva running for seat on council

Citing the need for improvements in the way Milton Council handles its business, civil engineer Dave de Sylva of 261 Laurier Ave. this week announced he will be a candidate for a seat on the council in the Nov. 13 election, representing the urban Ward Two.

Through his work and as a member of a local ratepayer group, de Sylva says he has been exposed to the municipal process in Milton and in several other communities. Councils should act with logic, reason and common sense, he said.

"I think there is room for a more thorough look at the decisions, before they are made," he said. "I would like to put a bit of speed in the way things are done, too."

He suggests he will be frank — not wishy-washy.

de Sylva was born in Brampton, grew up in Norval and attended high school in Toronto and Georgetown. He

graduated from University of Toronto in 1973 with a Bachelor of Applied Science in Civil Engineering and is currently active as a member in the Association of Professional Engineers of Ontario.

He moved to Milton two years ago and lives on Laurier Ave. with his wife Trish and four-year-old son Tony.

He spent a year working for George Wimpey Canada Ltd. at Meadowvale, then spent three and a half years with Markborough Properties as an engineer at Meadowvale. The lake at Meadowvale was one of his projects — he was in charge of the consulting engineers who designed and built it.

Earlier this year he spent five months with a consulting firm, The Kleinfeldt Group in Kitchener, then three months ago returned to Wimpey



DAVE de SYLVA

where he is active in the land development projects in Oakville, Brampton and Mississauga.

His work has given him substantial experience in dealing with municipal councils and staffs. He has frequently attended Milton Council meetings during the past two years, as treasurer and often spokesman for TREOC — The Residents' Eyes on Council — a group of Laurier Ave. sports centre neighbors who carried complaints about that project to the council.

His campaign literature calls for "sound financial planning coupled with a realistic approach to growth in Milton." He explained the council cannot ignore the growth commitments it has made and the town must expand. But he sees a need for "preventative medicine" to avoid future problems.

Milton's desirability as a place to live, work and play is growing, de Sylva says, but it means traffic and transportation problems will be compounded as the town grows.

Now 27, de Sylva's hobbies include cooking, gardening and making pine furniture, as well as photography. In his spare time he likes to play baseball and basketball.

Terry Gibbons Wd. 2 candidate

Terrance R. (Terry) Gibbons of 857 Fraser Ct. in Milton this week announced he will be a candidate for the office of councillor in Milton's urban Ward Two.

National Sales and Marketing Manager for GBF Filing Systems in Mississauga, he said his education, business experience and community spirit make him a worthy candidate. "I will be an integral part of a team which will get people working together for the betterment of this community," he said.

Al Wilson of Milton, a teacher at Acton High School, is his campaign manager.

Mr. Gibbons resides with his wife Susan at 857 Fraser Ct. where he has lived for the past four years. He has been a resident of Halton for 20 years.

He married Susan Durham of Oakville in 1971. Susan is a teacher at Robert Baldwin School in Milton.

Mr. Gibbons completed his secondary education at Thomas A. Blakelock high school in Oakville and continued his studies at the University of Western Ontario where he received his Honors Bachelor of Arts degree in Physical Education with a first class standing. Mr. Gibbons also obtained his diploma in Computer Science from the Business Training Institute in Toronto.

He began his career as a sales representative for Pennwalt Chemicals, Oakville and Grace Computer Services, Mississauga. In 1974 Mr. Gibbons accepted a position with the City of Mississauga as Supervisor of

Recreation. Mr. Gibbons participates actively in many community sports: fastball, swimming, squash, tennis, soccer, football, skiing and camping. He is also a member of the Milton Tennis Club and the Burlington Racquets Club.



TERRY GIBBONS

Cable 4 this week

WEDNESDAY, OCT. 18
 5:30 Bah'ai
 6:00 Ham Radio
 6:30 Magazine - Psychologist guests
 7:00 Valleyfields

THURSDAY, OCT. 19
 5:30 High School Football
 Georgetown vs. Milton
 7:15 (approx.) Magazine - Reflexology
 Friday afternoon programs to be announced

Call Now for the Cable Connection 877-0181

ROXY THEATRE

878-3272 / 878-3208

Wed. 18 Thu. 19 Fri. 20 Sat. 21 Sun. 22 Mon. 23 Tue. 24

HEAVEN CAN WAIT

WARREN BEATTY JULIE CHRISTIE JAMES MASON
 CHARLES DYAN BUCK HENRY
 GRODIN CANNON
 VINCENT - JACK GARDENIA WARDEN
 SCREENPLAY BY CLARE MAR AND WARREN BEATTY
 DIRECTED BY WARREN BEATTY AND JACK HENRY
 Produced by Paramount Pictures. A Paramount Picture.

Saturday Matinee Oct. 21 2 p.m.

GENERAL ADMISSION

FORBIDDEN PLANET

WALTER PIDGEON - ANNE FRANCES
 LESLIE NIELSEN - WIG WARDEN STEVENS
 And Introducing ROBBY, THE ROBOT!

Wed. 25 Thu. 26 Fri. 27 Sat. 28

CORVETTE SUMMER

MARK HAMILL ANNIE POTTS
 with BOB OGDEN
 Produced by Hal Barwood. Screenplay by Matthew Robbins.

Show Times: Sun. to Thurs. 8 p.m.
 Fri. and Sat. 7 p.m. & 9 p.m.

Discover COUNTRY KITCHEN RESTAURANTS

THE TRUCKERS HAVE DISCOVERED COUNTRY KITCHEN IS THE SPOT FOR LUNCHEONS...

Why don't you?

LUNCHEON 'FARE'

- ★ Hearty Luncheon Specials
- ★ Tasty Sandwiches & Burgers
- ★ Breakfast Anytime

FOR FAST FRIENDLY SERVICE, QUALITY FOOD AT REALISTIC PRICES... CHECK US OUT!

COUNTRY KITCHEN RESTAURANTS
 LOCATED IN FIFTH WHEEL TRUCK STOP
 OPEN 24 HOURS A DAY

"More than just a place for truckers"

40 CHISHOLM DRIVE (South-west Corner of Highways 401 and 25)
 Milton Phone 878-2339



How is this for Service

9 SERVICE BAYS
2 SERVICE MANAGERS
 11 Qualified Technicians, The Best Equipment, The Best In Service

DIRECT SERVICE LINE
878-8393

Assistant Manager: PETER BRAAKSMA
 Service Manager: WAYNE HOWARD

MOTOMASTER SHOCKS

14²⁹ INSTALLED

ONE WEEK ONLY!

- 25% more fluid than most standard shocks
- Large, durable, 1 3/16" piston for 40% more ride control than 1" bore shocks
- 1/2" micro finished rods for longer seal life
- Independent replenishing valves for instant response and a controlled ride
- Made to last by a leading North American manufacturer. Installed by the trained technicians at Canadian Tire

SHOCKS and LABOR GUARANTEE

HEAVY DUTY SHOCKS ARE GUARANTEED AS LONG AS YOU OWN THE CAR ON WHICH THEY ARE ORIGINALLY INSTALLED (Plus 90-Day Guarantee on Labor)

Lightweight Shocks \$12.45

OIL CHANGE-LUBE & FILTER

WITH EVERY LUBE and OIL JOB WE DO A THOROUGH CHECK OF...

- Wiper Blades • Battery and Cables • Radiator • Mirrors
- Universal Joints • Steering Linkage • Shock Absorbers • Lights
- Fan Belts • Hoses • Tires including Spare • Muffler System • All Fluids

ONE LOW PRICE 9.99

Includes: 4 quarts multigrade superoyale 10W30 warranty approved. Complete chassis lube. Mastercraft spin on oil filter. Extra oil 99¢ a quart if required. Most Trucks Excluded

Use Your Canadian Tire Card or Save with Cash Bonus Coupons on all parts

CANADIAN TIRE ASSOCIATE STORE

JUST SOUTH OF 401 ON HWY. 25

Open Mon. - Sat. 9-6 Thurs. & Fri. till 9 878-2349 OR SERVICE 878-8393

ROYAL CANADIAN LEGION
Branch 136

LADIES' AUXILIARY

OCTOBERFEST DANCE

OCTOBER 21 9 P.M. to 1 A.M.
 AT MILTON LEGION HALL

Music By The **CROSSFIRE**

LUNCH WILL BE SERVED ADMISSION \$3 PER PERSON