

Advertise the Action Way! The Want Ad Way!

WANT ADS PAY OFF!



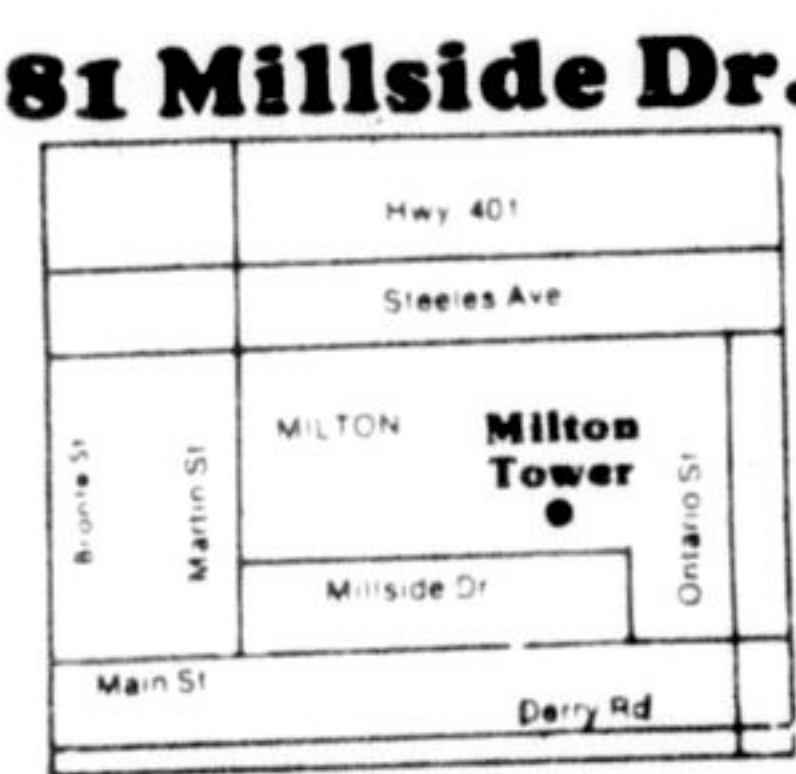
The Lowest Price In Town, \$37,500 for a 2 bedrooms and den

Over 64 sales in recent months - Only a few left please hurry.

WHY PAY RENT? Let your monthly payments buy your home.
WHY PAY MORE?

OPEN HOUSE is held 7 days per week.
Mon. to Thurs. 12:30 to 8:00
Fri. to Sun. 12:30 to 6:00

Milton Towers
• Fully broadloomed. Your choice of color.
• Fridge & stove
• Light fixtures
• Party room and kitchen
• Bathroom mirrors
• His & her saunas
• Extra storage in basement
• Close to future GO train
• A superb location within easy walking distance of shopping and public transportation



Phone 878-8787 Evenings 844-7496
Right in the heart of Milton.

77. REAL ESTATE

ACTON—3 bedroom house, view overlooking Fairy Lake, 152 Mill St. W. 853-2223. 11734

ACTON townhouse \$38,900.00. Spottless well kept 3 bedroom home in phase III. Well located in park like setting. House shows pride of ownership and includes stove, refrigerator and freezer. Immediate possession. Alteo Construction Ltd. 853-0190 or evenings 877-8167 or 856-9807. 11646

SMART 3 bedroom frame bungalow close to Acton on well treed double lot in country setting. Early possession. Excellent financing. \$52,900.00. Alteo Construction Ltd. 853-0190 or evenings 877-8167 or 856-9807. 11657



ROYAL TRUST CORP. OF CANADA, REALTOR



Vendor Selling At Loss!! Only \$42,900
Beautifully decorated 3 bedroom townhome, full basement, for you to finish the way you'd like it. 1 1/2 baths, central air conditioning, fully broadloomed, garage, fridge and stove included. Central location near Hwy. 25 and Hwy. 401 and less than 10 miles from O.E.W. Call Cora Kelly at 877-5237 or 853-0341 for an inspection.

77. REAL ESTATE

HOUSE lot in Rockwood, 45x132. Fully serviced \$17,900. Supreme Realities. (519) 836-0044. 11706

KINGHAM Road Acton \$56,900.00. Immaculate 4 bedroom detached 2 storey home backing onto treed and park like area. Giving complete privacy in back yard. Excellent financing. Early possession. Alteo Construction Ltd. 853-0190 or evenings 877-8167 or 856-9807. 11644

GEORGETOWN \$65,900.00. New 3 bedroom bungalow near completion. Close to town centre featuring open fireplace with heatolator, 2 bathrooms, completely finished basement with rec. room. Well treed lot, not in subdivision. Alteo Construction Ltd. 853-0190 or evenings 877-8167 or 856-9807. 11645

—New cars are on display in local dealers' showrooms.

Library contract

Bluegrass comes to Milton

A popular bluegrass band, the Humber River Valley Boys, will perform at Milton Library Tuesday evening, Oct. 10, at 8 p.m. The group is the winner of the Bluegrass Gold Award for 1977, given in recognition of their wide contribution and promotion of bluegrass music in Canada.

Early in 1973 two young students, tired of attending weekly jam sessions populated exclusively by guitar players, opted out of their musical ruts and decided to take up the banjo and fiddle. Today, the Humber River Valley Boys are well known throughout Ontario and draw consistently large crowds to

clubs such as Basin Street, Horseshoe Tavern and the Groaning Board in Toronto, and Barton's Inn, Canada's home of bluegrass in New Dundee.

The band plays numerous bluegrass festivals in summer and has also appeared at the Mariposa and Winnipeg Folk Festivals, among others, by virtue of their ability to play a varied reper-

toire of old-time string-band, ragtime and square dance music as well as straight hard-driving bluegrass. They have also recorded two albums.

Members of the band are John Glover of Waterford, mandolin; Larry Smith of Toronto, guitar; David Harvey, originally from England, bass; Don Thurston of Streetsville, fiddle; and

Brian Pickell of Paris, banjo. All Humber River Valley Boys sing and contribute at one time or another to either the lead vocal or tight harmony work.

Last winter the library presented two concerts: Climax Jazz and Syncona (Caribbean music). With the Humber River Valley Boys a third style of music comes to the library.



The Humber River Valley Boys

Bronte Creek Park festivities

Many special events have been planned for Bronte Creek Provincial Park's Harvest Home Festival Sunday and Monday of Thanksgiving weekend, Oct. 8 and 9.

There'll be something for every member of the family. A pumpkin carving contest and apple cider pressing and samples will be featured at the Visitor Centre while bobbing for apples will be the attraction at the Children's Farm.

A workshop on making corn husk dolls will be offered to

visitors 12 years of age and over at Spruce Lane Farm. A quilting frame will be situated outside the house and the public invited to try their hand at quilting.

Weather permitting, there will be horse drawn hay rides to see the fall colors.

The special events will operate from 12:30 to 4 p.m., but all facilities will be open according to the regular schedule.

Facilities include the children's farm, the recreation complex, Spruce Lane Farm

and the Visitor Centre. There are numerous picnic areas and transit wagons will be in operation to take visitors to the various areas.

Entry to the park is two dollars per car. Senior citizens are admitted free.

Bronte Creek Provincial Park is located off the Queen Elizabeth Way between Burlington and Oakville. Take the next exit west of the Hwy. 25 exit from the Q.E.W. Signs are posted.

For further information the numbers to call are 827-6912 or 335-0023.

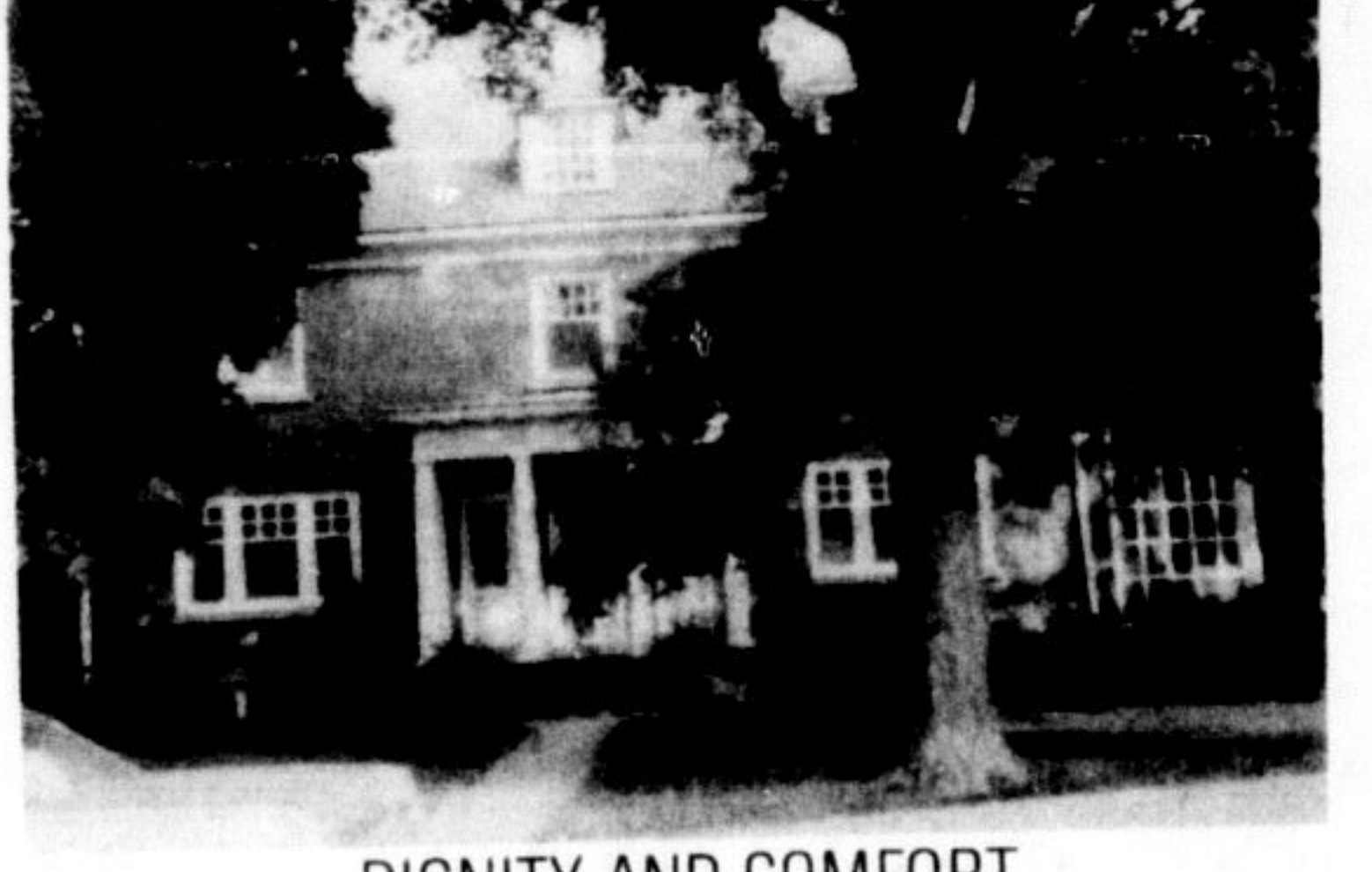
Personal loan sale
20% OFF
our regular loan interest rate
Ends this Saturday at
Canada Trust
Details on page 7



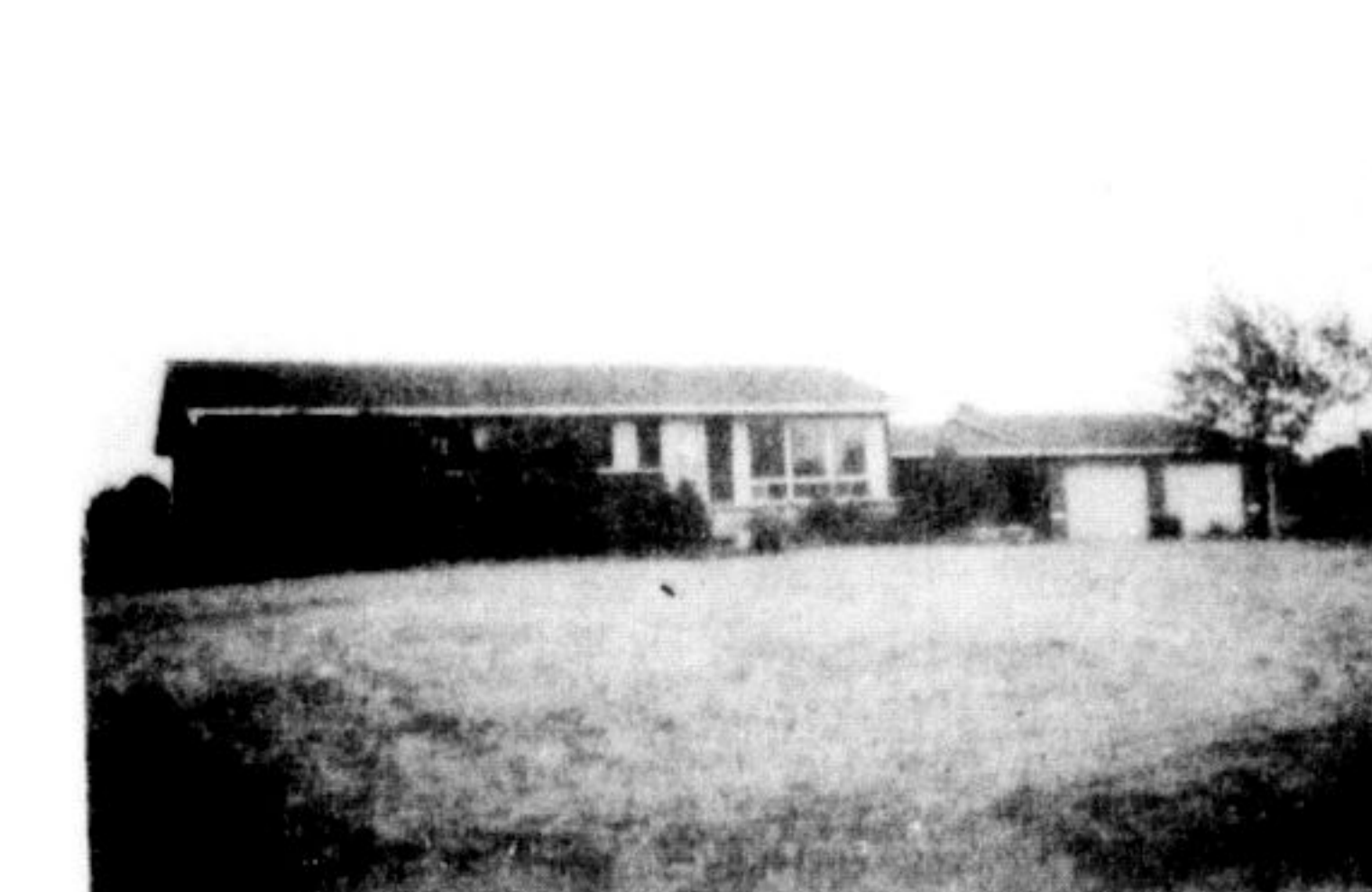
E.A. MITCHELL LTD.
Trafalgar Square, 310 Main Street East
Milton, Ontario
878-4118
456-1453 Direct Line



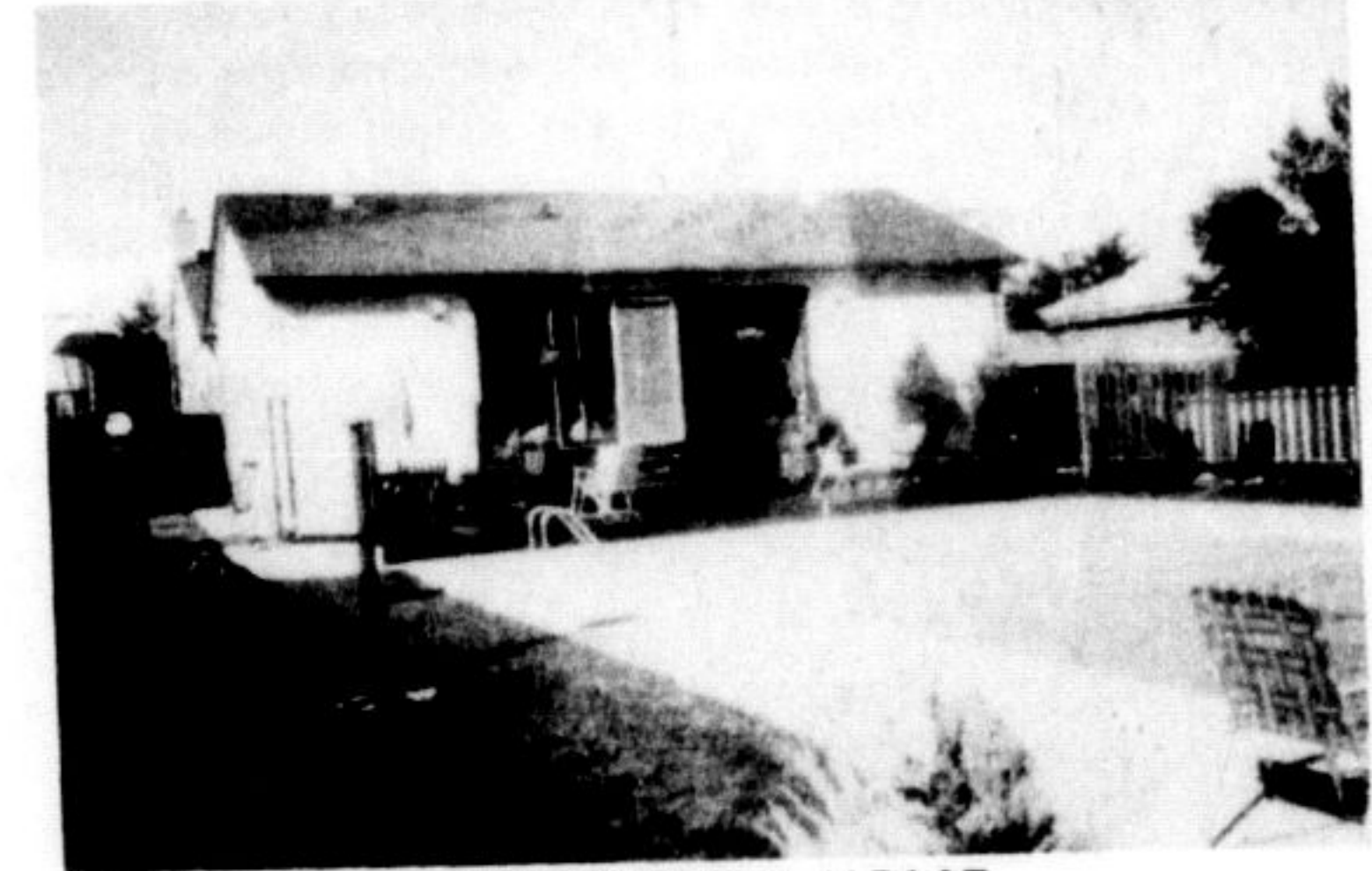
A HOME OF YOUR OWN
A small down payment and a moving truck is all you need to move you into this immaculate, well decorated townhouse. \$40,900.



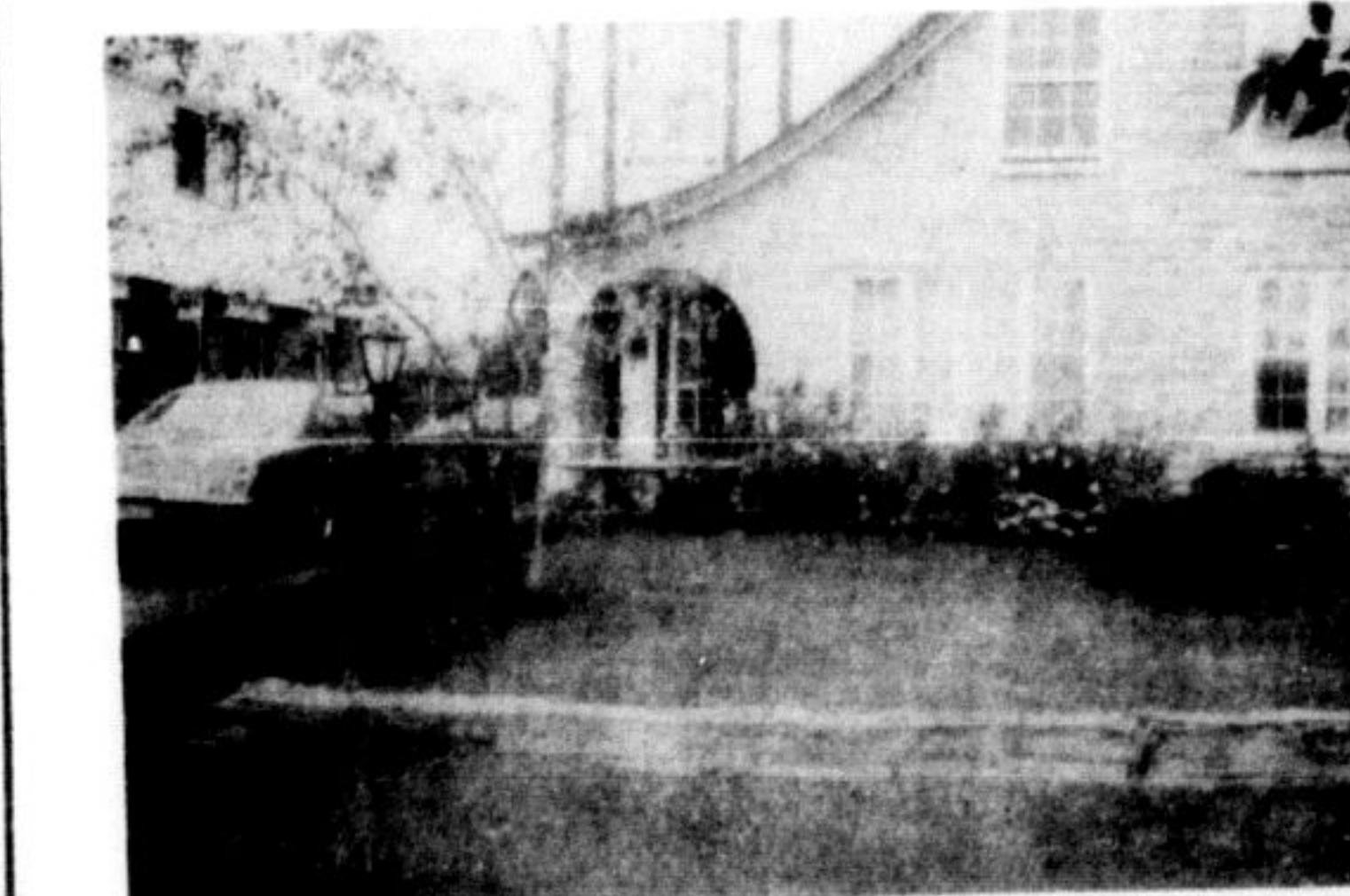
DIGNITY AND COMFORT
Picture yourself in this large, 3 storey centre hall plan. Beautiful new kitchen, FIVE large bedrooms, library, sunroom and much more! Located only a block from the centre core of Milton on a tree lined avenue. Make an appointment today to see this historic home. Asking \$139,000.



BRICK RANCH BUNGALOW - 2 ACRES
There are FOUR bedrooms, attached 2 car garage, mud room, full basement, pony barn, dog run and split rail fence among other extras. This house is approximately 5 years old and is priced to sell! \$77,900.



A BEAUTIFUL HOME
You must see this home to appreciate the happiness you would have in living in a modern, very large, comfortable home. FOUR bedrooms, separate dining room, Florida room, games room, family room and much more including a large inground pool with concrete patio - amidst a park-like surrounding. This home could not be reproduced for less than \$125,000. ASKING ONLY \$109,000



PARK ROYAL
Brick and stone - 2 storey, 4 bedroom semi on a nice quiet street - near plaza and schools. You'll like the neighborhood!!



GARAGE SALE
Also dining room, three bedrooms, huge kitchen and private patio. The truck is not included, but the dishwasher and carpets are! To buy this home with above extras, only a LOW downpayment is needed to a first mortgage of \$39,500.

LAND FOR INVESTMENT POTENTIAL
South of Hwy. 401 - not in the Niagara Escarpment Commission or Green Belt. 100 Acres with excellent frontage on paved road.

- For complete information, call any one of our helpful sales representatives
- | | | | |
|----------------------|----------|-----------------------|----------|
| Ross Cescon | 878-2755 | Maurice Milour, B.Sc. | 878-5093 |
| Mike Ledwith, C.R.A. | 878-4873 | Lindsay McLaren | 854-9810 |
| Pauline Hobbs | 878-1377 | Sylvia Bursey | 878-1038 |
| Jenny Walker | 854-9849 | Margaret Swain | 878-7687 |
| Paul A. Page | 878-2995 | Helene Page | 878-2995 |

Victoria Wood does it again with new home values that make dollars and sense!

MILTON DETACHED FROM AN AMAZING \$57,990

OUR NEW DETACHED HOMES INCLUDE THESE INCREDIBLE FEATURES:

- huge lots—120' deep! • up to 2,450 sq. ft. of space! • 2 or 3 big bedrooms • 1 or 2 baths • main floor family rooms
- formal dining rooms • formal living rooms • 1 and 2 car garages • mahogany trim and stain • classic, solid oak handrails • custom cabinetry and counter tops • beautiful brick and aluminum exteriors • spacious, airy kitchens with nooks • unique energy saving packages save you \$\$\$ • quality broadloom in all living areas • gas heating • abundant storage and closet space • 2 storey, bungalow and backsplit models • choice of lot and park locations—but hurry!

SAVE \$\$\$ ON THESE GREAT PRE-CONSTRUCTION PRICES!

THE AFFORDABLE HOME IS BACK! IN A GREAT MILTON LOCATION WITH MORE FOR YOUR MONEY THAN YOU'VE EVER SEEN!

Timberlea Estates

LOW DOWN PAYMENTS! AS LITTLE AS \$2,900 IS ALL YOU NEED! YOU DON'T HAVE TO WAIT ANY LONGER FOR A NEW HOME!

Take Hwy. 401 west to Trafalgar Rd. Go south to Derry Rd. Turn right on Derry and follow to the Timberlea Estates sales centre just west of 3rd Line (Thompson Rd.)

SALES CENTRE OPEN Sat. and Sun. 11 AM to 6 PM Mon. to Fri. 12 noon to 9 PM Phone 1-878-2829

COMBINED FAMILY INCOME OF \$23,000 QUALIFIES YOU FOR ONE OF THESE FANTASTIC TIMBERLEA HOMES!

Victoria Wood Development Corporation Inc.
Canada's leading builder of quality homes