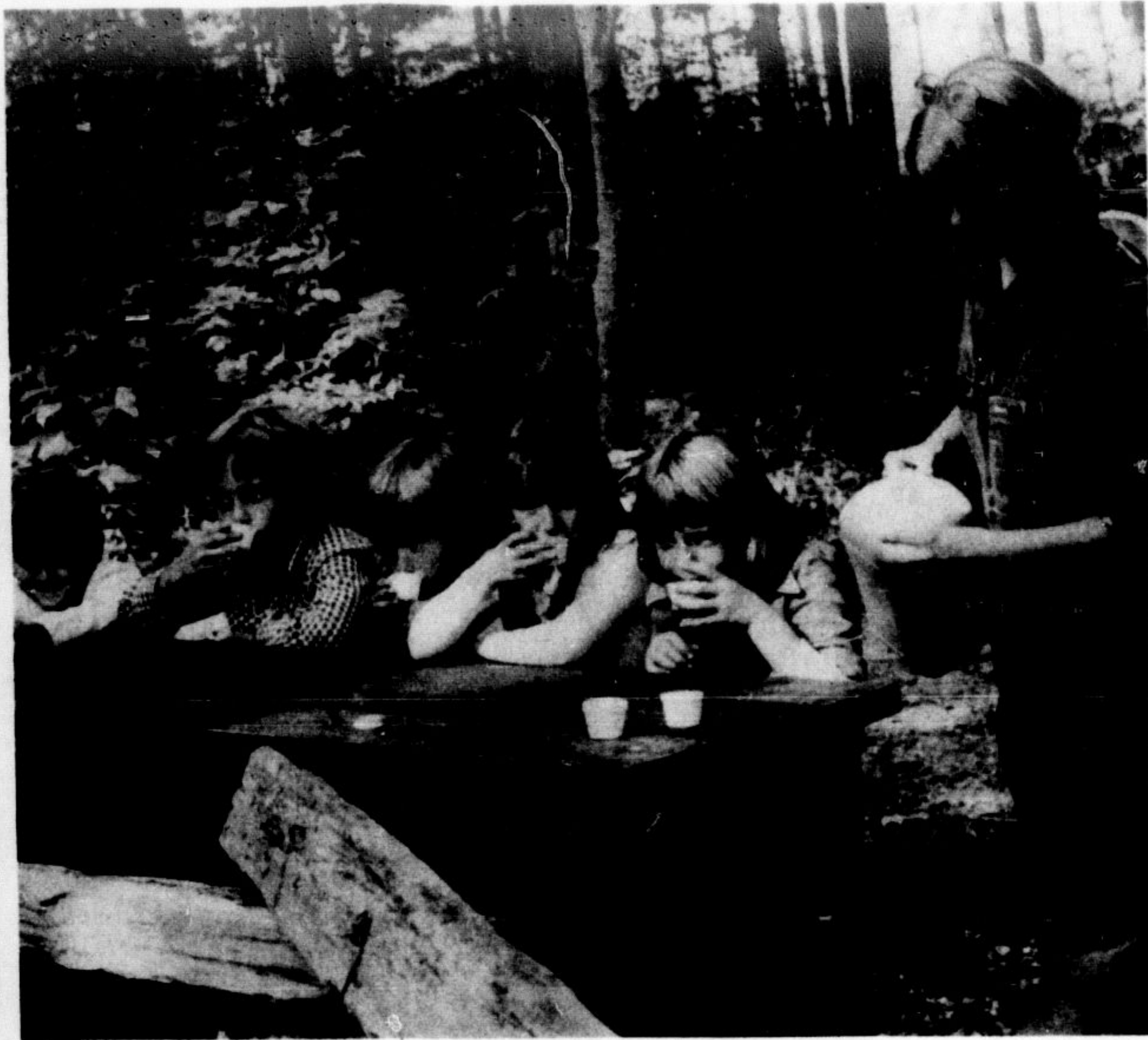




ALL ABOARD for a trip to the demonstration sawmill. A more scenic drive you'll never find. Mountsberg staffers are expecting large crowds of people to visit the conservation area during weekends in October.



Photos by Bob Burt

APPLE CIDER is always a treat and these youngsters were among the first to test the brew when they visited a special fall program at Mountsberg Conservation Area Saturday. Jeff Stewart, Nino Grbich, Dave, Julie and Tanya Stewart are served by Karen Kangas.



DEMONSTRATION of the old sawmill is one of the highlights this fall for visitors to Mountsberg Conservation Area. Much of the lumber cut at the mill is used for projects conducted by the Halton Region Conservation Authority.



MOUNTSBERG STAFFER Jim Aikenhead chats with Lowville Guides before they head out in search of butterflies during a visit to Mountsberg Conservation Area Saturday.

### North area pupils test scores low

North Halton students score consistently lower than those in the south on special national and Halton tests administered each year, Halton Board of Education was told Thursday. Georgetown Trustee Barry Shepherd said he studied results from 1978 standardized testing and found "consistently" pupils in the north score slightly lower than those in Oakville and Burlington. "The north scores slightly lower than the Halton norm," he announced during board discussion of an in-depth report on testing this year. Administrator Dr. Brendan Kelly said the trend at the elementary level is lower scores in the north. However, North Halton high school students aren't the lowest on the standardized tests. Shepherd said he had been told by a number of educators north Halton students score lower because they come from a lower social-economic level. Kelly said that theory is probably correct.

### Board purchases two school sites

Halton Board of Education decided Thursday to purchase an elementary school site in the Timberlea community area of Milton. The new development will have about 1,500 homes and the board is buying a 4.160 acre site for \$18,000 an acre. The board will also pay the servicing costs. Superintendent of Business and Finance Bruce Lindley noted the board is acquiring the site at a low price from Headborough Investments and that is a provision of the development agreement. At the same meeting the board decided to exchange a school site on Laurier Avenue for another piece of land on the Laurier extension beside a municipal park. The piece of land the board is trading to Goldfan Holdings is 2.5 acres in size. The board is acquiring a four acre site and will pay \$18,000 an acre on the difference between the two properties.

—Keep posted on happenings around the high school, through The Champion's "Hi School Happ'nins" column, appearing weekly in the feature section of The Champion.

North Halton  
CONTACT  
CENTRE  
877-1211

Personal loan sale  
**20% OFF**  
our regular loan interest rate  
Ends this Saturday at  
Canada Trust  
Details on page 7

**THE DRIVER**  
To break the driver, the cop was willing to break the law.

**THE FURY**  
PLAYS WED., THURS., FRI. & SAT.  
An experience in terror and suspense.

**Alice in Wonderland**  
3RD HIT FRI. & SAT. ONLY  
OPENS AT 7:00  
FURY AT 7:30  
DRIVER AT 9:30  
FRI & SAT. ONLY ALICE AT 11:00

**MUSTANG DRIVE-IN THEATRE**  
ERAMOSA TOWNLINE GUELPH

LAST DUSK TO DAWN SHOW THIS SEASON  
BOX OFFICE OPENS AT 6:30  
SHOW STARTS AT 7:30  
SORRY NO CHILDREN ADMITTED TONIGHT  
ONE PRICE COVERS ENTIRE PROGRAM

**1 EROTIC ODYSSEY**  
**2 OPEN AIR BEDROOM**  
**3 CONFESSIONS of a SEX MANIAC**  
**4 DIAMONDS on her NAKED FLESH**  
**5 FLESHPOT on 42nd STREET**

**GIANT 5 FEATURE ALL NIGHT SEXARAMA SHOCK SHOW!**

1. At 7:30 4. At 11:45  
2. At 9:15 5. At 1:30  
3. At 10:15

1 MILE E. OF GUELPH CITY LIMITS. JUST OFF HWY. 7 824 543

# Thanksgiving 1978. We've so much to be thankful for!

A bountiful harvest, peace in our time, and a country blessed with a wealth of resources.

We feel we have a lot to be thankful for at Kentucky Fried Chicken. The things we are all grateful for as individuals, and for our customers who, over the years, have become our friends.

We thank you for your business. And we're thankful for the health and vigor that makes it possible for us to serve you every day of the year.

These thanks are echoed by everyone at Kentucky Fried Chicken. From the smiling young lady who greets you when you enter one of our stores, to Colonel Harland Sanders and his family.



## Let's Say Thanks Together!

October 7, 8 and 9.

We will donate 50¢ for every bucket and barrel you buy at the regular price to the Canadian Lung Association. You can help increase our donation by picking up a bucket or barrel October 7, 8 or 9.

Together we can help support a vital association working tirelessly towards the relief of asthma, lung disorders and emphysema.



OPEN SATURDAY 11:30 a.m. to midnight SUNDAY 11:30 a.m. to 9 p.m. MONDAY 11:30 a.m. to 8 p.m.

Col. Sanders Recipe  
**Kentucky Fried Chicken**  
A CANADIAN COMPANY  
**chicken Villa**

Main & Commercial  
MILTON  
878-4171