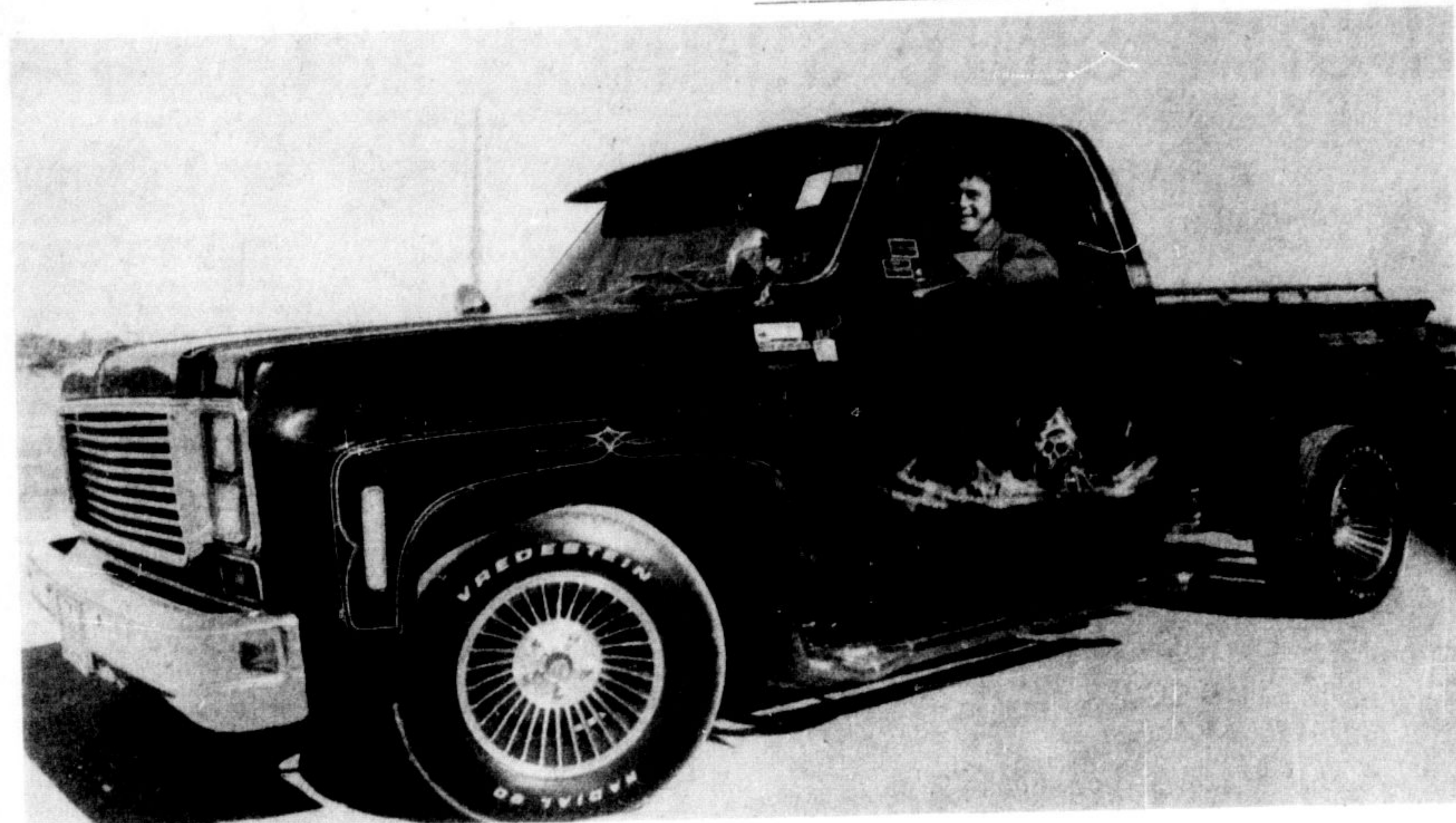


Optimist
graffiti
days in
Milton

THE CREAM OF THE CROP, this stately 1930 Rolls-Royce was awarded the best antique car prize at the Optimist show. Owned by Gordon McIntosh of Appleby Line, Milton, the vehicle

was completely restored by its present owner in the last eight years. The history of its facelift is carefully recorded with pictures and a story.

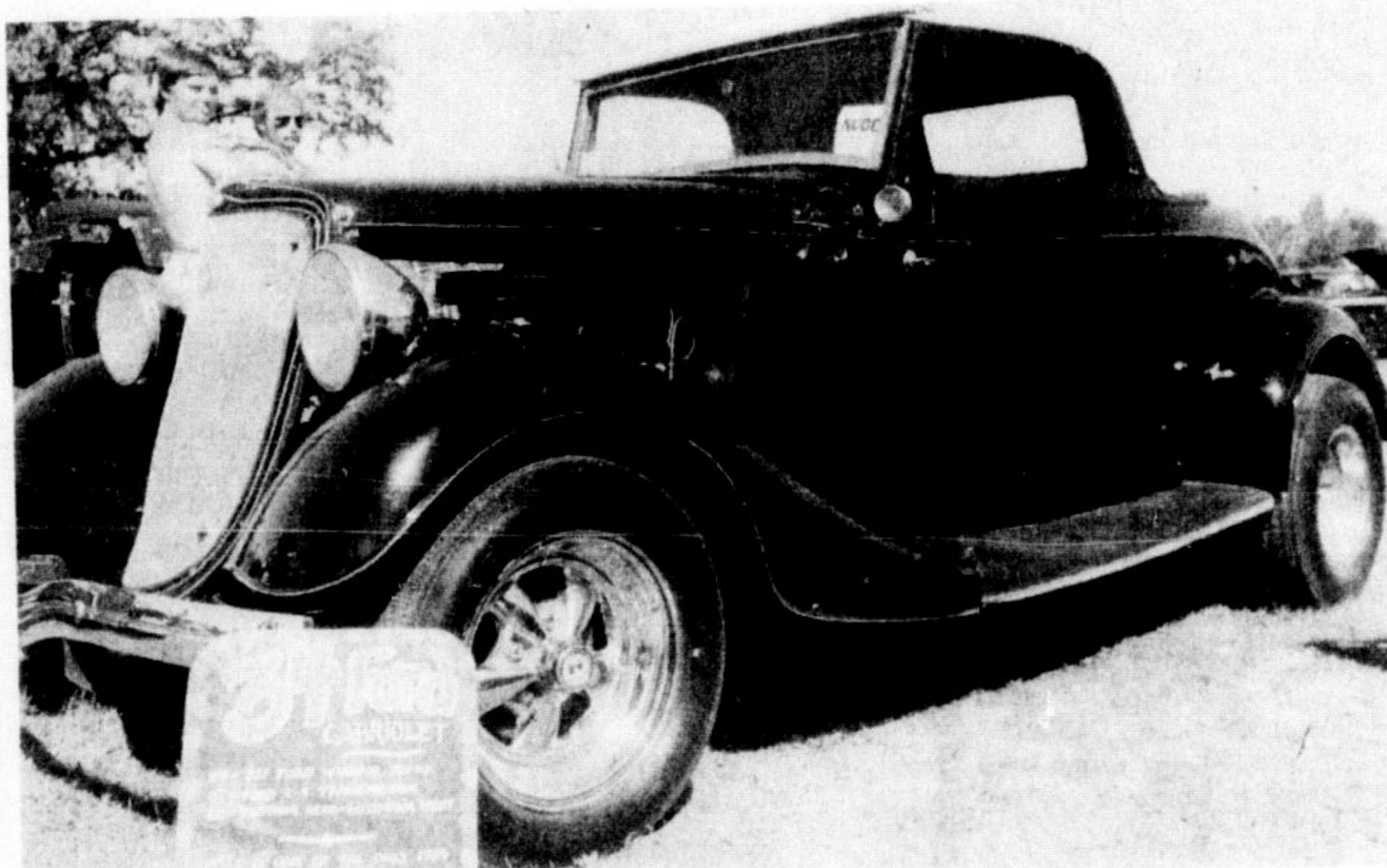


A WINNER! Milton resident Pat Sheridan cleaned up the ds Sunday afternoon at the Optimist Club Rod Show and Flea Market. The

proud owner of a 1977 "Custom" Chevrolet pickup, he left the show with five awards for his stylish truck.



CAR ENTHUSIASTS come in all different age groups, with one thing in common—the adoration of well kept or restored "older" vehicles. This 1961 Corvette drew the attention of Billy McGill, nine, from Guelph and his cousin Timothy Klinck, 14 from Milton.



BEAUTIFUL CARS there were plenty of, but this 1934 Ford Cabriolet drew plenty of votes for the best pre-1948 open car, and won its category. Awards were given to automobiles in 18 different categories, with all prizes by "people's choice". Each visitor to the grounds received a ballot to record their favorite in the various classes.

Authority gives flood plain regulations

It's sad. Every year the Halton Region Conservation Authority's watershed is subjected to extensive damage by people who don't realize the severity of their actions.

Dumping fill in a backyard ravine or constructing a building on a flood plain seems innocent enough. Unfortunately, such actions severely damage the flood plain's water storage capacity.

Some lands are naturally required by a creek or taken by it during floods. If these lands are filled and eliminated the creek has to take lands which previously weren't susceptible to flooding. Unsuspecting downstream neighbors become the victims.

Even filling in a swamp can have severe repercussions. Swamps reduce flooding by storing water during spring runoff. This water is released into the creeks during the dry summer months. Swamps also provide food, shelter and protective isolation for a wide variety of plant and wildlife species.

It is the Halton Region Conservation Authority's responsibility to protect the mutual needs of both the watercourses and the landowners within the watershed. The Conservation Authorities Act gives the Authority jurisdiction over fill, construction and alteration to waterways.

If your property is in a regulated area you will require a permit from Halton Region Conservation Authority to: (a) place or remove or regrade fill of any type of material, (b) construct any structure including additions or extensions to existing structures, (c) divert, dam, widen, deepen, or in any way alter a watercourse. This permit is required in addition to health unit and municipal building permits.

To find out whether or not your property is regulated, contact the Halton Region Conservation Authority at 310 Main Street in Milton.

Besides answering your questions, you will be provided with a new Conservation Authority brochure entitled, "Flood Plain and Headwater Area Regulations". Questions, such as How do I know if I am in a flood plain or other regulated area?, Do I require a per-

mit?, and How do I apply for a permit? are answered in this brochure.

A word of caution—play it safe. Attempting construction in a flood plain or other regulated area without a permit may result in prosecution under the Conservation Authorities Act.

In addition you will be required to remove any fill you have dumped. A contractor may dump fill on your property for free. He charges for its removal.

For further information phone Paul Attack, Environmental Planner at 878-4131.

—Dig out your old fashioned clothes. Old Fashioned Days return to Milton on labor day weekend. Many stores will have special displays.

—Workmen are repaving bumpy sections of Highway 25 between Milton and Acton this week.

- ★ Continentals
- ★ Monarch
- ★ Bobcats
- ★ Zephyr
- ★ Cougars with air conditioning



- ★ Courier Pick-up
- ★ F-150 Pick-ups
- ★ Econoline Window Van
- ★ E-350 14' Van
- ★ F-500 14' Van
- ★ F-600 16' Van
- ★ L-600 16', 18' & 20' automatics equipped with electrical tailgate loader



655 Main St. E. (at Wilson)
For a Day! a Week! a Month! a Year!
Drop in and check our economy rates.

★ SPECIAL WEEKEND RATES ★

GALLINGER MOTORS LIMITED
655 MAIN ST. E. (AT WILSON) MILTON 878-2883

Streetsville 876-1434

Levi's Reg. \$21.95

NOW

Unwashed

JEANS 13⁹⁵

Tack & Togs Ltd. 128-Guelph St. Plaza
877-1818
Georgetown

Thinking about decorating in your home?

Why not start by having your favourite chair or sofa reupholstered by our skilled craftsmen.

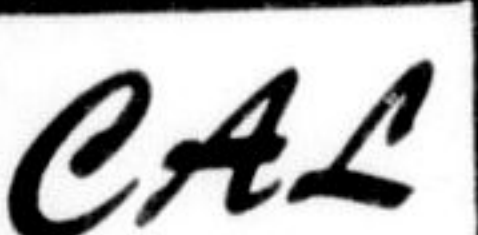
CALL TODAY FOR A FREE ESTIMATE



878-9094

Milton Upholstering

751 Steeles Avenue Mon.-Sat. 9-5 • Fri. 9-9



the Cabinet Answer^{LTD}

BONUS OFFER

DURING THE MONTH OF AUGUST



SPECIAL BONUS OFFER

BONUS

If your order is \$500⁰⁰ to \$800⁰⁰ you will receive

FREE

1 CHARLES CRAFT LIFESAVER SMOKE DETECTOR

(Retail Value \$30⁷⁵)

SPECIAL BONUS

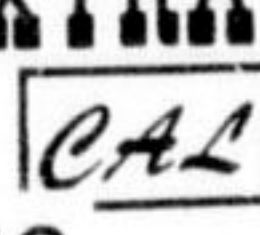
If your order is greater than \$800⁰⁰ you will receive

FREE

2 CHARLES CRAFT LIFESAVER SMOKE DETECTORS

(Retail Value \$61⁵⁰)

EXTRA PLUS



10% DISCOUNT ON ALL  CABINETS & COUNTERTOPS SOLD UNTIL SEPT. 2, 1978

CALL US NOW!

FOR A NO CHARGE CONSULATION IN YOUR OWN HOME

the Cabinet Answer^{LTD}

GEORGETOWN
877-0244
Guelphview Square
(Next to Neptune Restaurant)

BRAMPTON
456-0580
Squire Mews Plaza
239 Queen Street East
(Behind the Crock & Block Restaurant)

"It saves to do your own installing." We'll show you how.