

**Sherwood Hume**

# Milton man organizes steam show for CNE

After an absence of about 50 years, a steam show will once again be part of the Canadian National Exhibition this year thanks to the efforts of Milton resident Sherwood Hume, executive vice-president of the Ontario Rail Association and long-time steam enthusiast.

Mr. Hume was approached two years ago by the agricultural department of the CNE and Toronto historian Mike Filey to put together a steam show in celebration of the CNE centennial. It's taken the two years to prepare the show, the most intensive work being done in the last two months. The CNE begins Aug. 16.

In addition to the agricultural display, Mr. Hume is putting together a transportation display for the "Centennial Square" organized by Mr. Filey. The square will include a selection of transportation equipment spanning almost 100 years, as well as an oldtime bandshell, stores, and so on.

The agricultural steam show will be held outside, in front of the main door of the coliseum. There, visitors will be able to see:

- Mr. Hume's colorful red and green steam engine built in Hamilton in 1913. It will be operated by Roy Botterill, a retired engineer.
- A saw mill on loan from the Ontario Steam and Antique Preservers' Association. A rail fence, which required 600 rails, has been built around it. Halton Region Conservation Authority is supplying logs for the mill.
- A shingle mill lent by Vern Connell. During the CNE, 400 cedar blocks will be sawed into shingles. An electric hot iron will be used to stamp

each with the CNE centennial logo. These shingles will be given out as souvenirs;

- A threshing machine from George White. It was made in London (Ontario) and bought new by Oscar Downs from Dick McDuffie's implement shop on Main St. in Milton.
- A Hieder tractor dating to 1914, two International Harvester tractors, a John Deere, Rumely and, possibly, a Cockshutt tractor made in Brantford. The intent is to include Canadian-made tractors where available.
- A Massey Harris binder.
- A water wagon and a wood wagon.

In organizing the show, Mr. Hume was helped by his sons and his brother Gordon.

Inmates of Maplehurst Correctional Institute, through the centre's community work program, made a contribution to the show as well. They painted the sawmill, cleaned and painted the binder, wood wagon, threshing machine and Cockshutt tractor.

Doubtless, many CNE visitors will view the steam equipment as artifacts from an unfamiliar past. But Mr. Hume doesn't regard it as antique. He grew up with it. "It's what we used to use."

The transportation display in Centennial Square will include a selection of vehicles from the turn of the century to the future. In the display will be:

- Steam locomotive 136 and coach 322, also named "Esquering", on loan from the collection of the Ontario Rail Association.
- A bi-level GO transit coach representing the train of today.
- A turn-of-the-century streetcar built and used by

the Toronto Railway Company, a private organization that at one time had the franchise to operate street cars in Toronto. Car 306, which has the original red plush seats, cast iron stove, and some of

the original glass, comes from the National Museum of Science and Technology in Ottawa.

- An old wooden "offset" streetcar, No. 1326, on loan from the Ontario Electric

Railway Historical Association Museum in Rockwood.

- Car No. 2894, called a Peter Witt car after its designer. Peter Witt cars were the last streetcars to run on Yonge St. before the

subway was built. They usually ran in tandem. This one is owned by the Ontario Rail Association, but is on long-term lease to the Toronto Transit Commission.

- A streetcar like the ones

still used in Toronto today. These are called PCC cars.

- A CLRV car, a light rail vehicle, the new ultra-modern street car which will soon make its appearance.

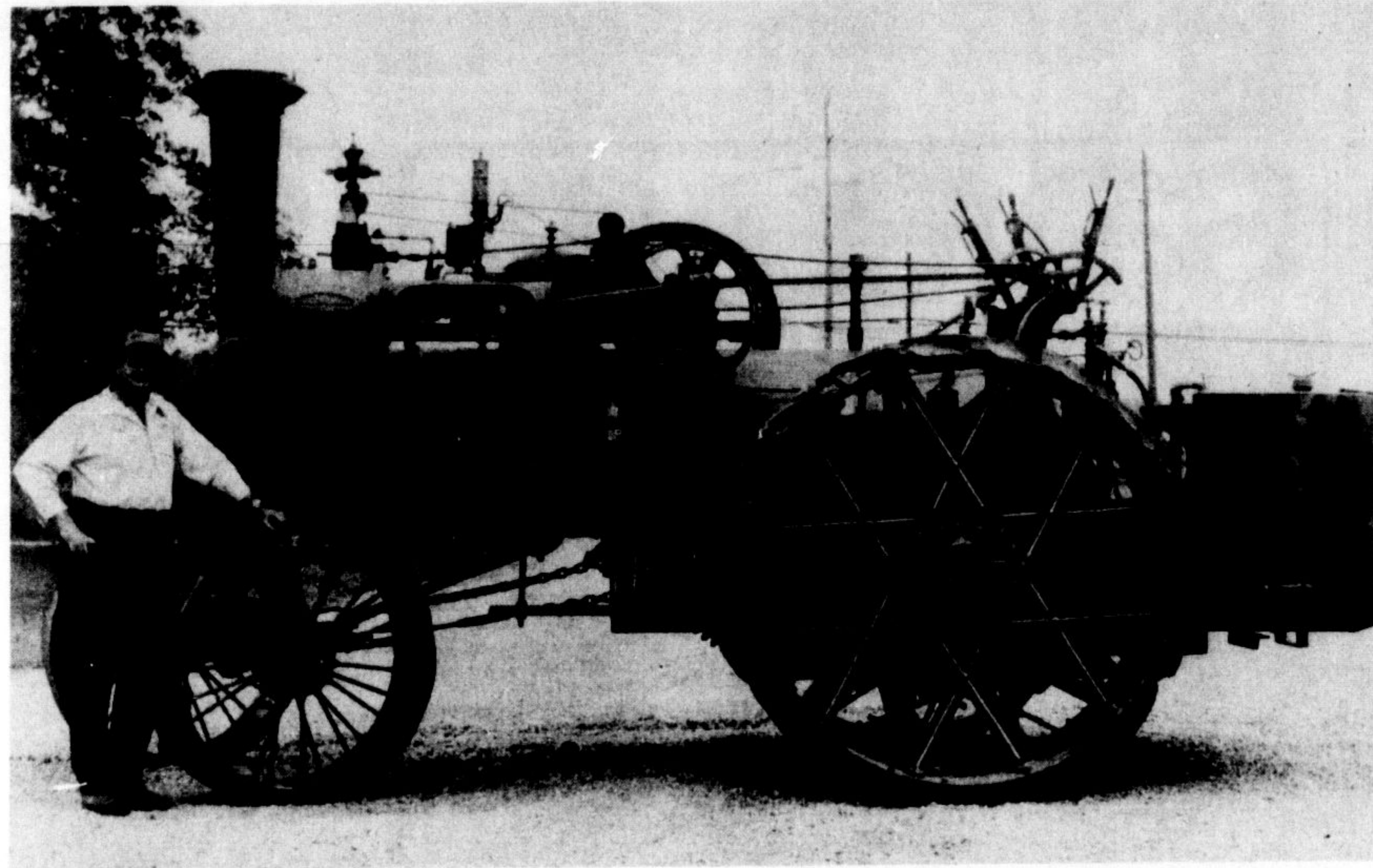
- A Toronto Transportation Company double-decker bus. Double-decker busses were built and used in Toronto for a short while but, impractical in Canadian winters, they were not a success.

- A stage coach, if it's restored in time. The coach is being restored by the National Museum in Ottawa.

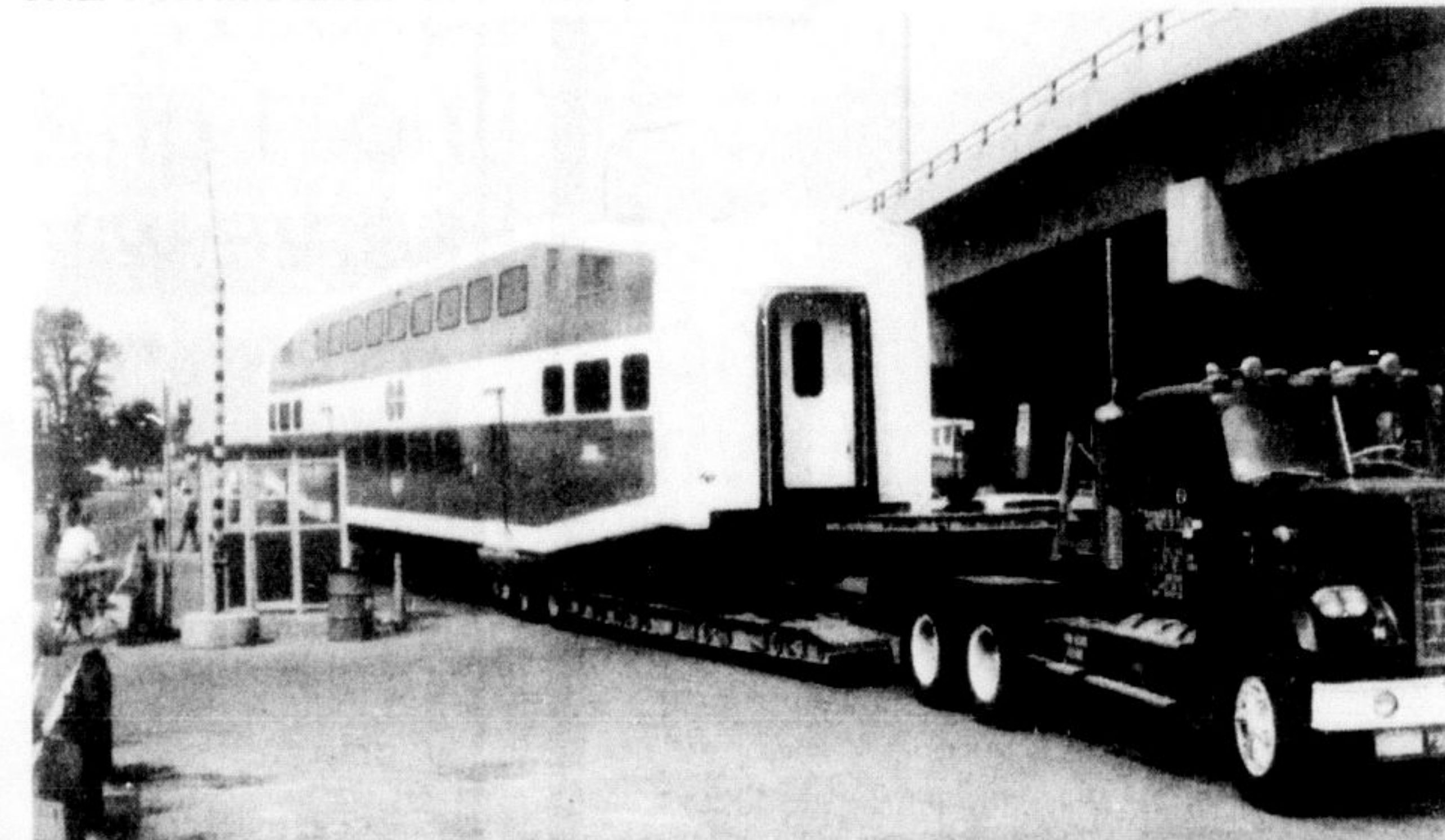
The railway cars were moved to the CNE grounds by rail, but trucks and cranes had to be used to move them into location for the display. That was the difficult part. There was little space in which to manoeuvre with the massive equipment.

"After the show's over, we have to move it all back again," Mr. Hume sighs. But there's no doubt he'll be up to the task. After all he and his men moved the equipment in against all odds — a Toronto contractor had refused the job, saying it couldn't be done.

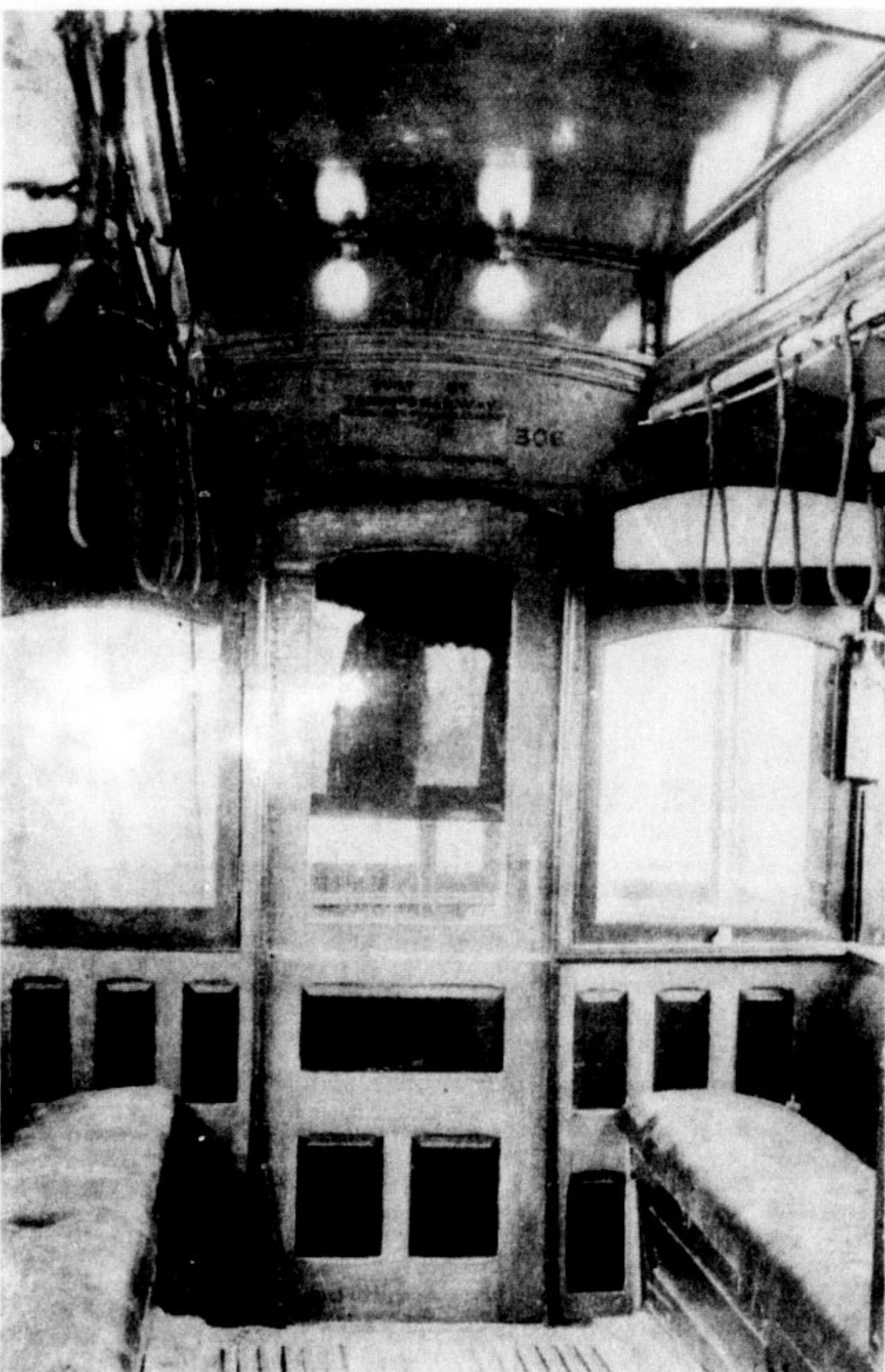
"We didn't know it couldn't be done, so we did it," says Mr. Hume.



MILTON RESIDENT and steam buff Sherwood Hume was asked by the Canadian National Exhibition to put together a steam show for the CNE's 100th season. Mr. Hume, who is familiar with the machinery since childhood, will include this 1913 steam engine made in Hamilton in the display.



IT'S A TIGHT SQUEEZE as double-decker GO train is trucked to site of transportation display being set up on CNE grounds. Trains and street cars from the turn of the century, those of today and those of the near future will be part of exhibit organized by Sherwood Hume.



NO. 306, a turn-of-the-century streetcar built and operated by the Toronto Railway Company, will make up part of a transportation display at CNE this year. The car, whose home now is the National Museum of Science and Technology in Ottawa, has red plush seats and a cast iron stove (not seen in picture).

For Home Delivery of  
**The Champion**  
 Call 878-2341

**TRAVELWAYS TOURS**  
**AGAWA CANYON**  
 AUTUMN COLOUR TOURS  
 3 Days from Toronto  
 by coach, boat & train

Departs: **Sept. 30, 1978**  
 Oct. 2, 1978  
 Oct. 4, 1978  
 Oct. 6, 1978

Cost per person:  
 Single \$159.00 Twin \$139.00  
 Triple \$129.00 Quad \$119.00

**Milton Travel Service**  
 14 Martin Street 878-2886

**Ontario Careers Action Programme In Industry**

The following training positions are available in the Halton-Peel area:

- Clerical
- Order Processor
- Sales
- Advertising
- Receptionist
- Photography
- Publishing
- Recreation
- Retailing
- Maintenance
- A/V Technician
- Bookkeeping
- Shipper/Receiver
- Secretarial

Any person aged 16-24 and unemployed for three months, or looking for a first job is eligible to participate.

Register at your local Sheridan College Community Services Office, or phone OCAP at Sheridan College, 279-3731.

Get a good thing going...  
**ADVERTISE IN The Champion**

*The Luxury Canadians Want*  
*The size Canada needs.*

**1978 AMC CONCORD 2 DOOR SEDAN**  
 THE CAR BEAUTIFUL ★ TEST DRIVE IT TODAY  
**CLEMENT'S MOTORS OF MILTON**  
"Serving Milton and Area Since 1955"  
 500 BRONTE ST. S. • JUST NORTH OF HOSPITAL • 878-2328 MILTON

**Zellers AFTER INVENTORY CLEARANCE SALE**

Thursday, August 3 - Saturday, August 5, 1978

WOMEN'S WEAR	CHILDREN'S WEAR INFANTS' WEAR	MEN'S WEAR	OUTDOOR FURNITURE
T-SHIRTS SHORTS PANTS SHIRTS BLOUSES SUNDRESSES PANT SUITS SKIRTS BLAZERS ASSORTED SIZES	A COMPLETE <b>SUMMER SELECTION</b>	TOPS SHORTS SHIRTS T-SHIRTS PANTS	OUR COMPLETE STOCK <b>SUMMER PATIO &amp; LAWN FURNITURE</b>
<b>1/3 TO 1/2 OFF</b>	<b>1/2 PRICE</b>	<b>1/3 TO 1/2 OFF</b>	<b>33 1/3 OFF</b>
<b>FOOT WEAR</b>		<b>CAMPING EQUIPMENT</b>	
MEN'S - LADIES' - CHILDREN'S <b>SUMMER SANDALS</b> <b>1/2 PRICE</b>		REMAINING STOCK <b>TENTS</b> <b>25% OFF</b>	

**Zellers MILTON MALL**  
 55 Ontario Street South  
 Open Monday-Friday 9:30-9:30 • Saturday 9-9 • Phone 878-8176  
 Zellers Has Low Prices... No Mistake About It.