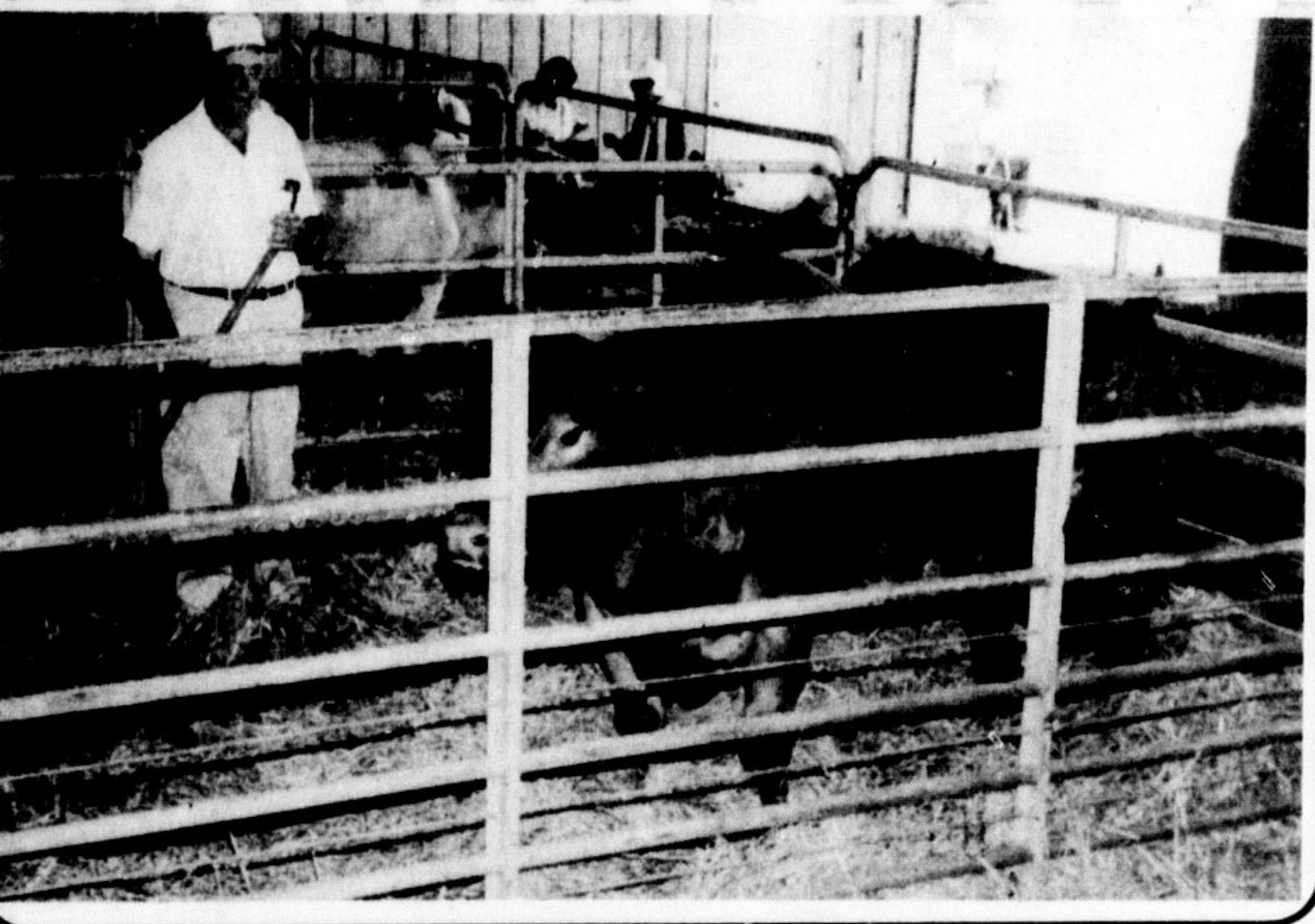


## Murray Grey day



Springloom Farm, the No. 2 Sideroad farm owned by Allan Cook, was host to over 500 people for a field day and beef barbecue Sunday when the Ontario Murray Grey Cattle Association held its annual outing. Mr. Cook is president of the Canadian association. John Moles was emcee for the judging contests, draws, tours of the farm and an auction of six steers which followed the barbecue. Below, helpers from the 4-H beef clubs of Elgin County slice and serve the 462 pounds of beef (Murray Grey, of course, right from Springloom's feedlot) which chef Angus Campbell spent the whole day cooking. Guests enjoyed the barbecue on the spacious grounds of the farm. Herdsman George Read-head, below, is pictured with two of the steers sold by auction.



A GOOD CROWD was out Friday night for the Halton Holstein Club's annual Twilight Meeting, held at the Hornby farm of Dr. R. D. Kunica. One event was the judging of a class of three-year-old

heifers in milk. Guest speakers were Mr. and Mrs. Hugh Beaty of Milton, home on furlough after a year of work with Brazilians on the S.H.A.R.E. program.

### Clip calf at Bronte

A beef heifer washing and clipping demonstration will be staged at Bronte Creek Provincial Park's Children's Farm on Sunday, July 16 from 1.30 to 3.30 p.m.

Young members of the Halton 4-H Beef Club will show and explain various techniques in preparing a beef animal for show at fall fairs.

The Park offers a number of facilities to you and your family. Come rent a bike, visit the rural Spruce Lane Farm, and watch your children experience the Children's Farm. Learn about the honey bee at the Visitor Centre, or go for a swim in Bronte's man-made lake.

### Amalgamation for growers

The Farm Products Marketing Board has announced that 82 per cent of the growers who voted in a recent expression of opinion poll favored amalgamating the Ontario Fresh Fruit Growers' Marketing Board with the Ontario Tender Fruit Growers' Marketing Board, to create the Ontario Tender Fruit Producers' Marketing Board.

In the expression of opinion poll, conducted by the Farm Products Marketing Board, 248 growers responded to the proposal.

The Board is reviewing the results and will be making a recommendation to the Minister.

### Twilight meeting

## Speak about Brazil

By Mark Leahy  
Hugh Beaty who is with the Canada-Brazil Share Program was guest speaker at the Halton Holstein Twilight Meeting held at Falgarbrook Farm on Friday, July 7. Mr. Beaty and his wife Melba have been working with the Brazilians in South America to introduce the Holstein heifers from Canada to their new climate.

The Beatys are home in Milton after a year in Brazil and plan a short stay before returning for another year.

President Ken Murray chaired the Twilight Meeting. Everyone was welcomed to the Falgarbrook Farm by Dr. R. D. Kunica and Geraldine Kunica and Allan Ness and Mrs. Ness.

Dr. Neil Anderson discussed the herd health program on the Falgarbrook Farm. Everyone present judged a class of three-year-old Holsteins with the official placing being given by Jeff Nurse. Prizes were awarded

to the winners as follows, ladies class, Barb Ford and Ralda Waters; men's section, James C. Reid and Bill Laidlaw; 4-H section, Martha Corker and Bill Robinson. Reasons were given on the class by Bill Robinson, Peter Christie and Rob Murray. To break ties each person guessed the B.C.A. for one of the cows in the class.

Holly Hurren, Halton Dairy Princess, was introduced by the Chairman. Coffee and donuts ended a very enjoyable evening.



WALTER ROYLE of Oakville, a longtime member of the Halton Holstein Breeders Association, received a 40-year pin from past president Ross Segsworth (right) during Friday's twilight meeting at the Kunica farm, Hornby. Gordon Sinclair of Burlington, who was also to have received a 40-year pin the same evening, was unable to attend.

## Halton 4-H News

**CALF CLUB**  
By Shirley Murray  
Halton 4-H Calf Club's June meeting was held on Wednesday, June 14 at Mr. and Mrs. Ed Parker's home.

The meeting opened with president Marie Murray leading the 4-H pledge. Tom Parker welcomed the club to their home and then gave a type demonstration on his prize bull. The demonstration dealt with what main qualities to look for in judging a Limousin class of heifers.

The members then proceeded to the barn, where they judged a class of heifers. Marie Murray started the members into their reasons and Tom Parker gave the official placing.

The business part of the meeting was held in the house. The July meeting, and the possibilities of club jackets, were discussed. Marie Murray thanked Mr. and Mrs. Parker on behalf of the club.

**HORSE CLUB**  
By Eartha May

The June meeting of the Halton 4-H Horse Club was held at the Rockwood Equine Clinic. Dr. Duncan briefly discussed his work, which dealt mainly with finding problems in feet and legs. He then gave us a tour of the clinic. This tour included the surgery room, the lab and medication storage room, and the room where x-rays are developed.

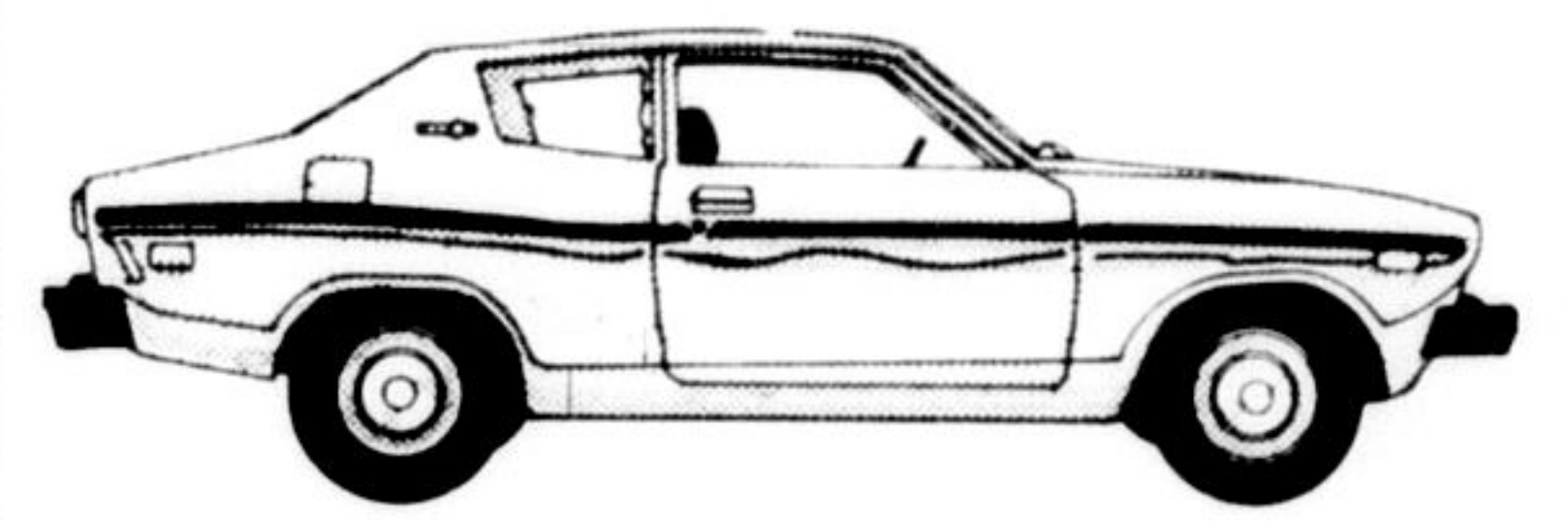
Dr. Duncan showed us some x-rays and discussed some of the problems with the horses at the clinic. He told us more about his work and we asked various questions.

Following that we discussed the fun day at Jim Cation's and our own Halton fun day.

It was decided that Achievement Day would be Sept. 24. After discussing some other club activities, the meeting was closed.

**THE EASY AUTOMATIC**  
**\$4,195<sup>00</sup>**

DATSUN B210 s AUTOMATIC



**EASY COME... EASY GO!**

**Easy to Drive:** That's a genuine 3-speed automatic no facsimiles! A 17" turning radius with real soft touch steering that gets you in and out of tight spots in a flash. And plenty of zip with the safety of power assisted dual braking systems.

**Easy to load:** Wide access doors. Room for 4 plus luggage. Deep wide trunk.

**Easy to own:** This car's no pit-stop favourite. Doesn't hang around gas stations. Barely

calls in for service (thanks to 12,000 km service intervals). Very reliable, ask any car rental company. Everything fits precisely... and works! (16" of our production people do nothing but check.)

**Easy to buy:** No fuss. Our salesmen won't give you the run around. This is a total package car - courtesy lights, cut-pile carpeting, flow through ventilation, quiet-ride insulation - a lot of extras that can sneak up on the price of other cars.

Standard Transmission B-210 \$3,845<sup>00</sup>

**NORTH END DATSUN**

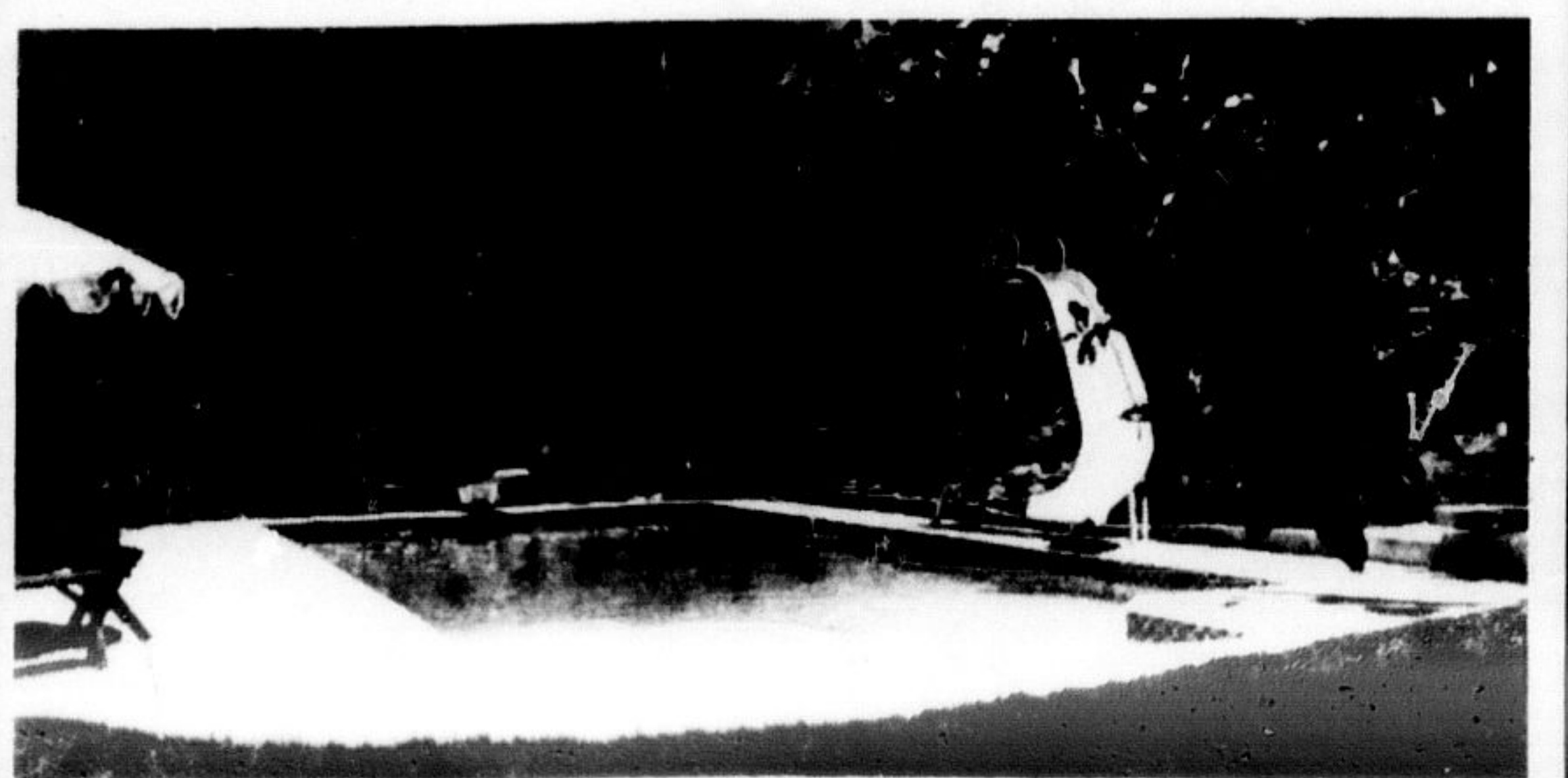
**DO THE DATSUN B 210 TEST DRIVE TEST**

610 Martin Street, Milton 878-4137

WHERE THE SMART MONEY'S GOING.

**Pro MILTON PRO HARDWARE**  
MILTON MALL 878-5040

WE STOCK A COMPLETE LINE OF  
**POOL CHEMICALS EQUIPMENT ACCESSORIES**  
ALL AT COMPETITIVE PRICES



**FREE WATER TESTS**  
We're Qualified and Ready To Help You With All Your Pool Needs

**"SEE US FOR YOUR BEST DEAL"**  
COMPARE OUR PRICES THEN YOU'LL KNOW  
A MOST COMPLETE LINE OF NEW INTERNATIONAL TRACTORS  
IN STOCK FROM FARMALL CUB CADETS - FARMALL CUB  
FARMALL 140 W/CULTIVATORS ON UP ...

**MUST CLEAR IMMEDIATELY JUST REPOSSESSED**  
500 Bu. Ton-O-Wik Dryer c/w loading auger & stack cleaner. Excellent New Sept. '77. New Price \$12,300. Now **\$10,200**

**MISCELLANEOUS**  
KEWANE 20" wing cultimulchers w/cylinders, hose & new tires. New Price \$9,000. 1 Year Old. Our Price **\$6,000**  
Wagon & rack 8' x 12' Hammer mill belt drive **\$100**

**DISC HARROWS**  
Single lift disc for MASSEY Poney ..... \$95  
Single lift disc for FARMALL cub ..... \$200  
MASSEY 3-point 28-plate disc ..... \$535  
MASSEY 3-point 32-plate disc ..... \$535  
INT. 3-point 24-plate disc. Excellent ..... \$785  
INT. No. 37 - 44 plate wheel control disc ..... \$865  
COBEY 32 plate wheel control ..... \$660  
JOHN DEERE 28 plate wheel control ..... \$775  
New 1977 Price 12" - 12 shock Hi-clearance chisel plow ..... \$2,658  
New Int. 6 row - 3 Point Hitch Cultivator ..... Regular Price \$2,250 TO CLEAR **\$1,600**

**SELECTED USED TRACTORS**  
INT. 1066 w/cab, air & duals. All rubber, 1 year old. Excellent ..... \$17,700  
INT. 686 - 410 hours w/cab ..... \$14,800  
INT. 574 - 8 speed new rubber ..... \$ 6,800  
INT. 354 - gas real good ..... \$ 5,200  
INT. 454 - Excellent ..... \$ 6,800  
FARMALL cab w/cult. & fert. unit. Excellent - like new ..... \$ 2,750

**USED TRACTORS**  
FARMALL 656 gas - good ..... \$ 5,650  
LEYLAND 384 - real good ..... \$ 5,200  
MASSEY 65 - diesel ..... \$ 3,750  
MASSEY 1100 w/cab & duals ..... \$11,500  
MASSEY 35 - gas ..... \$ 2,100  
FERGUSON 20' 85 ..... \$ 950  
FORDSON Dexta gas w/duals 5 ft. blade ..... \$ 900  
JOHN DEERE M ..... \$ 500  
INT. 450 - diesel ..... \$ 1,500  
INT. 1066 w/cab - New T.A. ..... \$14,500  
INT. 4100 - 4 wheel drive w/cab ..... \$15,500

**LOADER TRACTORS**  
MASSEY 35 with trip loader ..... \$ 2,450  
INT. 624 Agromatic w/new Dunham loader ..... \$ 6,950  
CASE 350 w/ trip loader ..... \$ 1,200  
INT. 2400 backhoe loader ..... \$ 9,300  
JOHN DEERE 450 crawler loader ..... \$ 8,500  
FARMALL 230 w/ trip loader ..... \$ 1,750

**PLOWS**  
INT. 2 furrow fast hitch ..... \$ 250  
INT. 710 - 4 furrow 18" auto ..... \$ 3,650  
MASSEY 3-point - 3 furrow 12-14" adj. .... \$ 935  
MASSEY semi-mtd. auto - 6-16" ..... \$ 2,800  
MASSEY 3-point - 3 furrow trip beam ..... \$ 460  
FARMALL cub single furrow ..... \$ 175  
MASSEY 3-point 3 furrow ..... \$ 375  
INT. 540 semi-mtd. 14" ..... \$ 1,700  
WHITE semi-mtd. 5 furrow w/cylinder & hose ..... \$ 1,575  
JOHN DEERE 3 point 4 furrow 14" trip beam ..... \$ 1,250  
INT. 3-point 3 furrow ..... \$ 495

**"BEST DEAL SPECIAL"**  
New Last Fall - Repossessed Int. 720 - 5 x 18" - Semi-Mtd. Plow Excellent - Like New **\$5000**

**"NEW" PAST DUE**  
I.H. 1086 - 130 H.P. - 4 Wheel Drive Factory Cab & Air, 20.8 x 38 rear & 13.6 x 24 front. New Price \$39,230. Compare Our Price **\$32,900**

**HAY & HARVEST**  
INT. No. 2A hay conditioner ..... \$ 125  
NEW HOLLAND crimper ..... \$ 125  
INT. crop chopper ..... \$ 1,750  
INT. 100 Dyna balance, 3 point hitch mower ..... \$ 775  
INT. 5' sickle bar mower for Super A ..... \$ 200  
INT. No. 37 baler - excellent - ready to go ..... \$ 1,950  
INT. 175 - 10' swather w/hay conditioner ..... \$ 2,950  
INT. 555 forage harvester w/hay pickup & 2 row cornhead, excellent ..... \$ 4,500  
2 - DION forage boxes each ..... \$ 995  
INT. No. 50 forage harvester w/2 row cornhead ..... \$ 2,400  
NEW HOLLAND 616 w/1 row cornhead ..... \$ 1,200  
GEORGE WHITE bale elevator ..... \$ 275  
Gas engine hydraulic power unit (auger mtd). New price \$599. Repossessed, like new. Our Price **\$ 499**  
Int. P.T.O. 6' Combine ..... \$500  
New 1977 Price 84" Offset Bush Hog Rotary Cutter for Orchard Use ..... \$1,695

**"BEST DEAL SPECIAL"**  
Just Arrived - 2 INT. Deluxe 16' - 3 Beater Forage Boxes w/7 Ton Horst Wagons 9.5L x 15 - 8 Ply Tires. Used Last Fall - New Price **\$2450**

YOU HAVEN'T SHOPPED 'TIL YOU GET OUR PRICE ON NEW TRACTORS  
**YOUNG'S FARM EQUIPMENT LTD.**  
(416)689-6668 1/2 mile west of Clappisons Corner on #5 Hwy. (416)689-6668