

Plenty to see and do

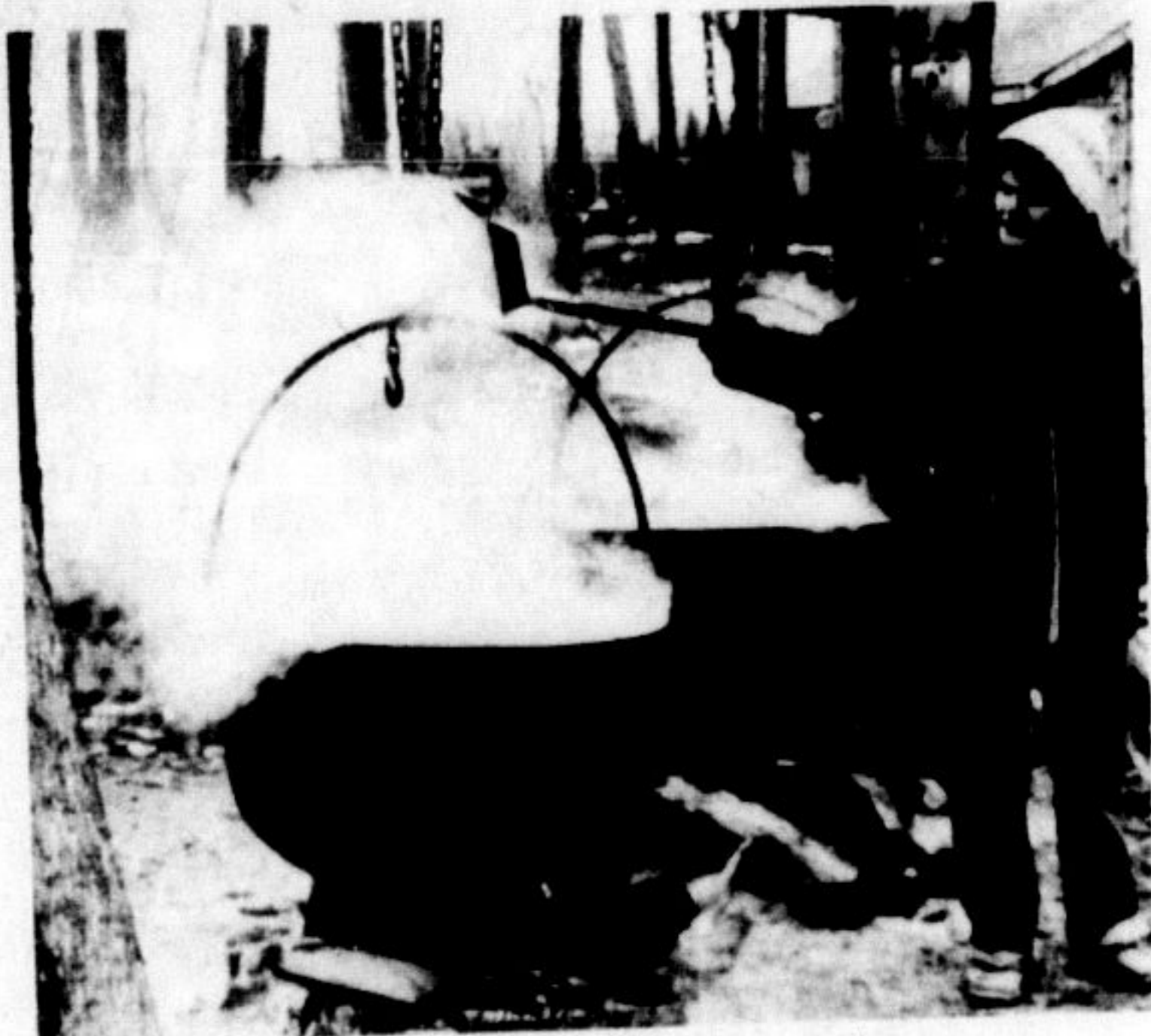
How to have fun in March holiday break

Not going south to the sun in the March break next week?

Here's a handy little guide to activities in the Milton, Oakville, Burlington, Hamilton and Toronto areas that might just help keep you (and your holidaying children) occupied all week long. Take in one or more of the attractions and programs, at your leisure.

The information, compiled by Champion staffers, was correct at press time, although some minor changes may be necessary. The information is intended to serve as a guide only.

If you can't go during March break, clip and save the list—many of these places have year-round programs and you might get there on a later weekend or during summer holidays.



Boiling the sap at Mountsberg

Sugar bush at Mountsberg

If you and your family like maple syrup, then you're in luck. The Mountsberg Wildlife Centre is hosting the Conservation Authority's annual maple syrup demonstration March 18-19 and during the week of the March break (20-23). Also there will be demonstrations on Good Friday March 24 and Easter Monday March 27.

Demonstrations run from 10 a.m. to 4:30 p.m. with a charge of \$2.50 per car and \$17 per bus. It's on Town Line, three miles west of Campbellville.

Pancakes with maple syrup will be sold as well as other maple products.

Horse drawn sleigh or wagon rides will be featured in addition to the exhibitions and demonstrations. The ancient Indian method of making maple syrup will be demonstrated as well as the iron kettle and flat pan method and the more modern evaporation method.

Films and slides will be featured in an interpretive program and you can take the Sugar Bush Trail that tells the entire maple syrup story at a number of exhibits.

Circus, animal themes at Y

The Milton YM-YWCA is planning some activities for pre-schoolers age 3-5 during the March break. It is located on the lower floor of Trafalgar Square on Main St.

Tuesday March 21 is Mother Nature Day with activities and games centered around animal themes. The time is 9:30 a.m. to 2:30 p.m.

Thursday March 23 is Circus Day. There will be games, crafts and physical activities centered around circus and carnival themes. These also run from 9:30 a.m. to 2:30 p.m.

The cost for the programs is \$6 for one day and \$10 for both days.

Library's programs for kids

Milton Public Library has some special children's programs planned for the March break. Tickets are needed and can be picked up in advance at the library. Check to make sure there are openings, as tickets are reportedly going quickly.

Monday, March 20 at 2 p.m. there will be an African Lion Safari show. Tickets are 25 cents.

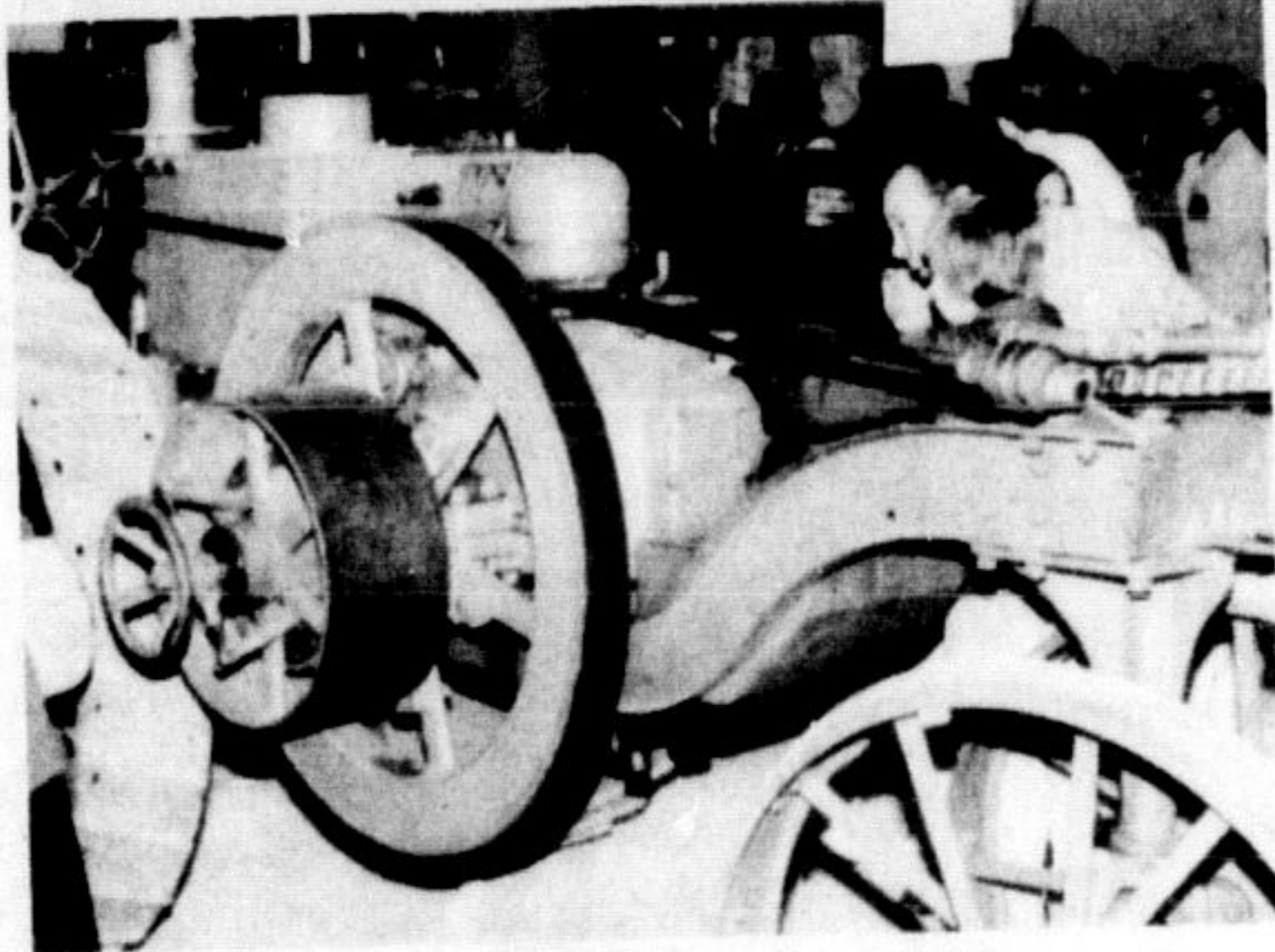
On Tuesday, March 21 at 2 p.m., there will be a presentation called Music and Mime. Tickets are 25 cents.

Wednesday, March 22 at 2 p.m., a film The Many Adventures of Winnie the Pooh will be shown. Tickets are 50 cents.

Thursday, March 23 at 2 p.m. Captain Bill James, a magician from Hamilton will be featured. Tickets are 25 cents. He's great with kids, don't miss it.

Also on Thursday at 7:30 p.m. a Walt Disney film, The Snowball Express will be shown.

The library is on Bruce St. Call 878-2879 for information.



Displays at Ont. Agricultural Museum

Our agricultural history

Currently open just 10 a.m. to 4 p.m. Monday to Friday, the Ontario Agricultural Museum at Milton Heights tells the story of Ontario agriculture. It covers 92 acres and development is phased over the next 10 years, so it's far from finished yet.

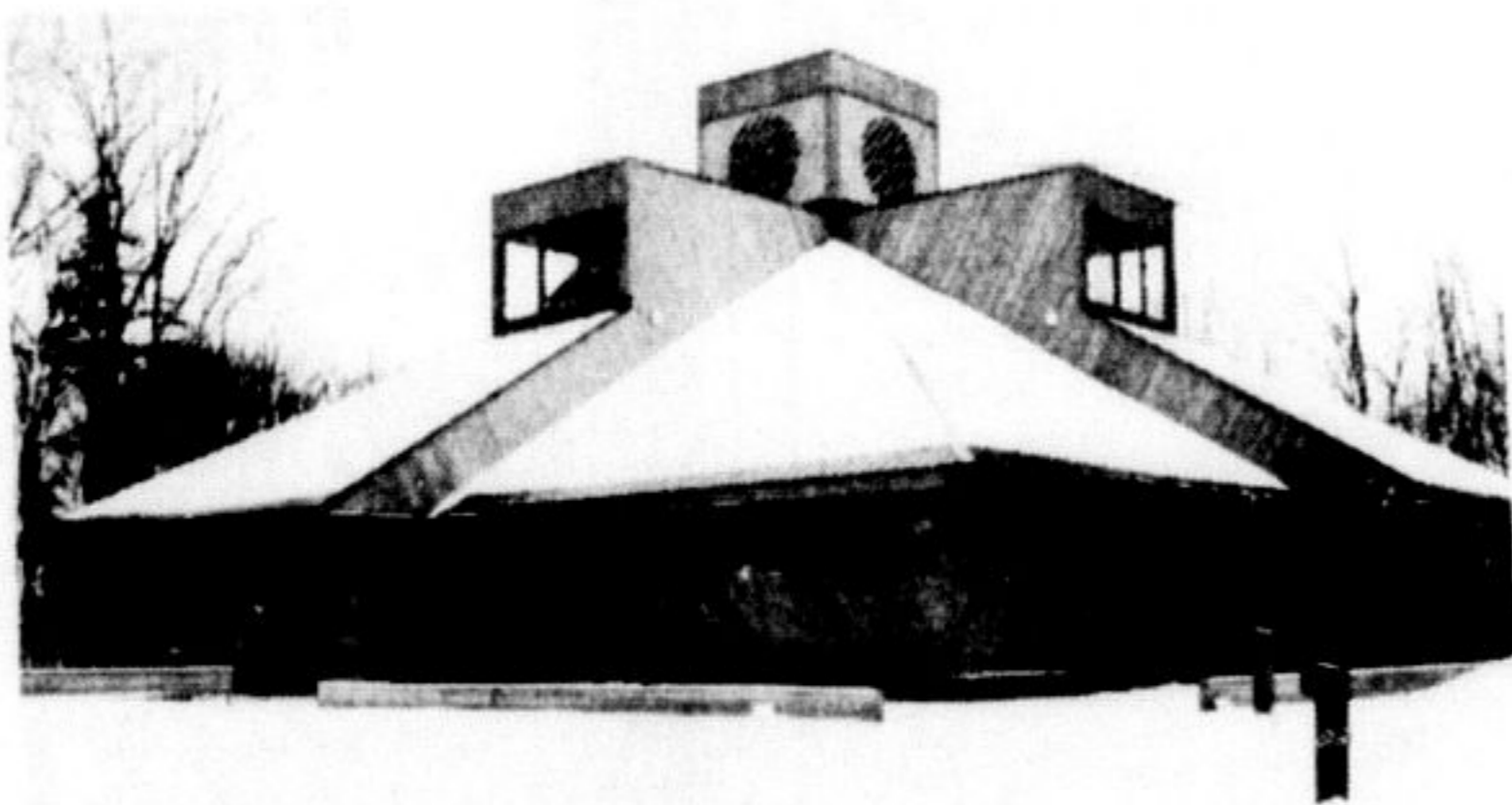
Displays currently depict agriculture from around 1800 to the present, including methods of farming and tools of the trade.

The main exhibit hall is full of displays and several farmsteads are under construction around the property. Entrance is off Tremaine Road, between Steeles Ave. and Highway 401.

Museum tours available

Halton Regional Museum at Kelso will be open afternoons from 1 p.m. to 4:30 p.m. All buildings will be open and there will be guides to take you through. The craft house is still under construction, but you are invited to watch the building process. Good Friday the Museum is closed.

Also is you phone for reservations, you will be able to have a cup of tea in the main building near the fireplace while you are there. Admission is 50 cents for adults, 25 cents for seniors.



Kortwright Conservation Area

Pancakes, sundaes, waffles

At the Kortwright Centre for Conservation at Kleinberg, special public demonstrations of pioneer and modern methods of making maple syrup will be shown on Sunday, March 19 and Sunday March 26, between the hours of 10 a.m. and 4 p.m.

There is an audio visual presentation in the new Kortwright Centre theatre on the production of maple syrup, which will be shown before visitors enter the sugar bush. This will be followed by a walk through the sugar bush to see the complete operations of maple syrup making.

An added treat to the pancakes and maple products for sale will be maple syrup sundaes and hot waffles with maple syrup. Prices are adults \$1, children and students .75 cents, and a family \$3.

Syrup season is underway

The Metro Toronto and Region Conservation Authority is providing two conveniently located areas for residents of the area to see how maple syrup is made.

At Bruce's Mill near Gormley, visitors may enjoy pancakes and maple syrup, buy maple products, see the sugaring off operations and walk the sugar bush.

The mill will be open daily from March 11 to April 9 from 10 a.m. to 4 p.m. with a parking charge of \$2 per car.

On March 19 and 26 only, take a ride on a horse-drawn wagon. Also on weekends only, between 11 a.m. and 3 p.m., there will be maple taffy available, providing there is snow.

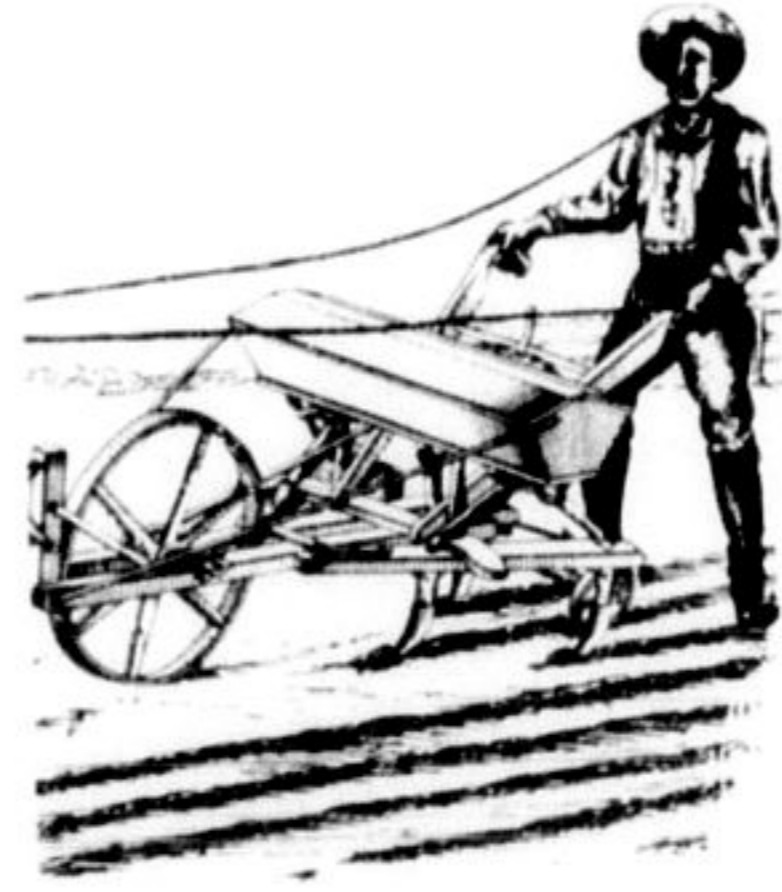
Soviet Space Ship display

Why not take in a spectacular exhibit on loan to Canada from the Soviet Union, at the Ontario Science Centre. The exhibit is entitled Soviet Space Ships.

It features 90,000 pounds of space hardware which traces the history of the Soviet space program from before Sputnik until the present. Also on display will be a mooncar, a simulated rocket launching, and a model moonbase.

Admission to this exhibit is free with admission to the Ontario Science Centre. (Adults \$1.50, students .75 cents and children 12 and under, .25 cents.) And there's lots more to see and do here too.

The Science Centre is open Sunday to Friday 10 a.m. to 6 p.m. and Saturday 10 a.m. to 10 p.m. and is located at 770 Don Mills Rd., Don Mills. It's not far off the Don Valley Parkway.



Halton Regional Museum, Kelso

We're available

Yes, your Champion is available on Wednesday at the following news dealers:

HALTONVILLE

Mane's Country Market

BROOKVILLE

Brookville Store

ACTON

Acton Smoke Shop

Ed's In and Out

Royal Milk Store

GEORGETOWN

Steven's Store

Stratton Dupuis

Joe's Tuck Shop

Delrex Smoke Shop

SPEYSIDE

Speyside General Store

HORNBY

Hornby General Store

Country Fare

DRUMQUIN

Drumquin Store

PALERMO

Palermo Store

Colling's Station

NELSON

Nelson Variety

LOWVILLE

Robertson Gulf

Mount Nemo Variety

Lowville Variety

KILBRIDE

Coote's Store

CAMPBELLVILLE

Mohawk Inn

Early's Garage

Opera Emporium

MILTON HEIGHTS

Daviau Variety

IN AND AROUND MILTON

Chalet Restaurant

Hood's Drive-In

Bonin's Esso

Alfonso's Fruit Market

West End Meats

Milton Variety

Fifth Wheel Stop

Harris Stationery

Beckers Store

The Champion

Elsley's Pharmacy

Ledwith's Super Save

Milton Drug Mart

Bond Stationery

Mac's Milk, Bronte St.

Mac's Milk, Steeles Ave.

Mitch's Variety

Milton District Hospital

10-25 Service Station

Riviera Variety

Linda's Restaurant

7-11 Food Stores

Loblaws

Milton Fruit Market

Halton Court House

Boutique Fashions



Ms. Johnna Nadalin models some of our newest arrivals, eyelet camisole (\$17.95) long wrap skirt (\$34.95) sunhat (\$10.95) and other accessories available at...

... the Pine Tree 95 main st.



For ski fun, Kelso's the place

Downhill or cross country

Those who enjoy downhill skiing can visit Glen Eden Ski Club at Kelso Conservation Area, the only downhill slopes in this area—or take a one-day or weekend jaunt to the Blue Mountain area at Collingwood where there are plenty of runs and extensive facilities.

Cross country skiers are enjoying groomed trails at Mountsberg Wildlife Centre (Town Line three miles west of Campbellville) and Bronte Creek Provincial Park (entrance off Burloak Dr. just north of the Queen Elizabeth and west of Highway 25). Or you can strike off on your own at any conservation area in this district.

(More March break fun on Page C4)

Obituary

Evelyn Irving

Evelyn (Lynne) May Irving of R.R. 3, Milton, died suddenly in Milton District Hospital Feb. 23. She was 38.

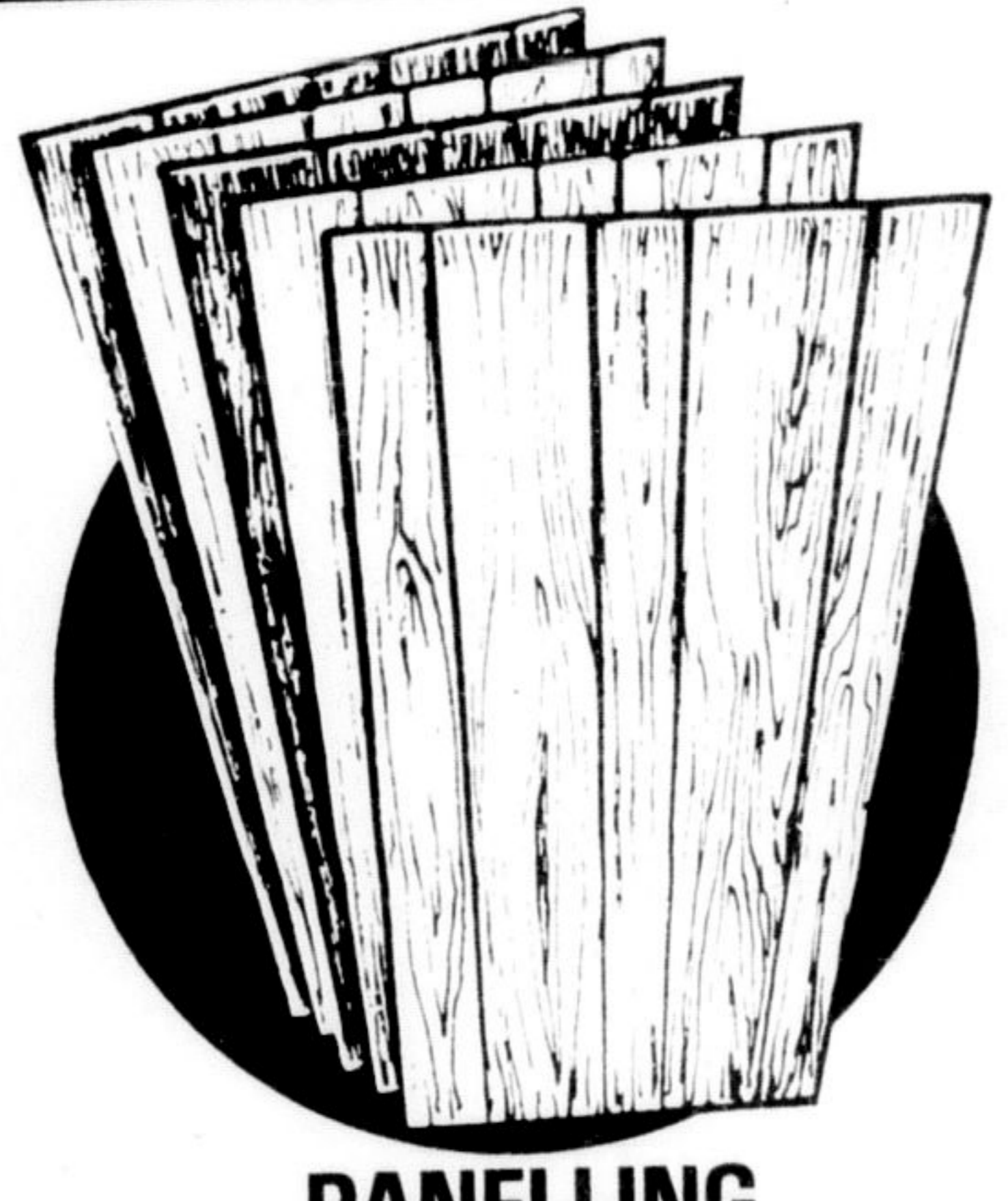
Mrs. Irving was born in Brantford Oct. 23, 1939, the daughter of Muriel Simmons and the late Ernest Simmons. She attended school in Brantford. An employee of Northern Telecon, she was married in Milton and has lived here 17 years. She was a member of Boston Presbyterian Church.

Mrs. Irving is survived by husband Dave of Milton, son Bob Burke of Goose Bay, Labrador, her mother of Brantford, sister Mary (Mrs. Ted) Torelli of Brantford, and brother Wayne of Annapolis.

Funeral service was held Feb. 25 from Boston Presbyterian Church with Rev. Rod Lewis officiating. Burial was in Evergreen Cemetery, Milton.

Pallbearers were friends Vic Auger, Garry Christie, George Scholz and Pat Eggleton and brothers-in-law Bill Pearson and Tom Johnson.

HOME IMPROVEMENT Specials



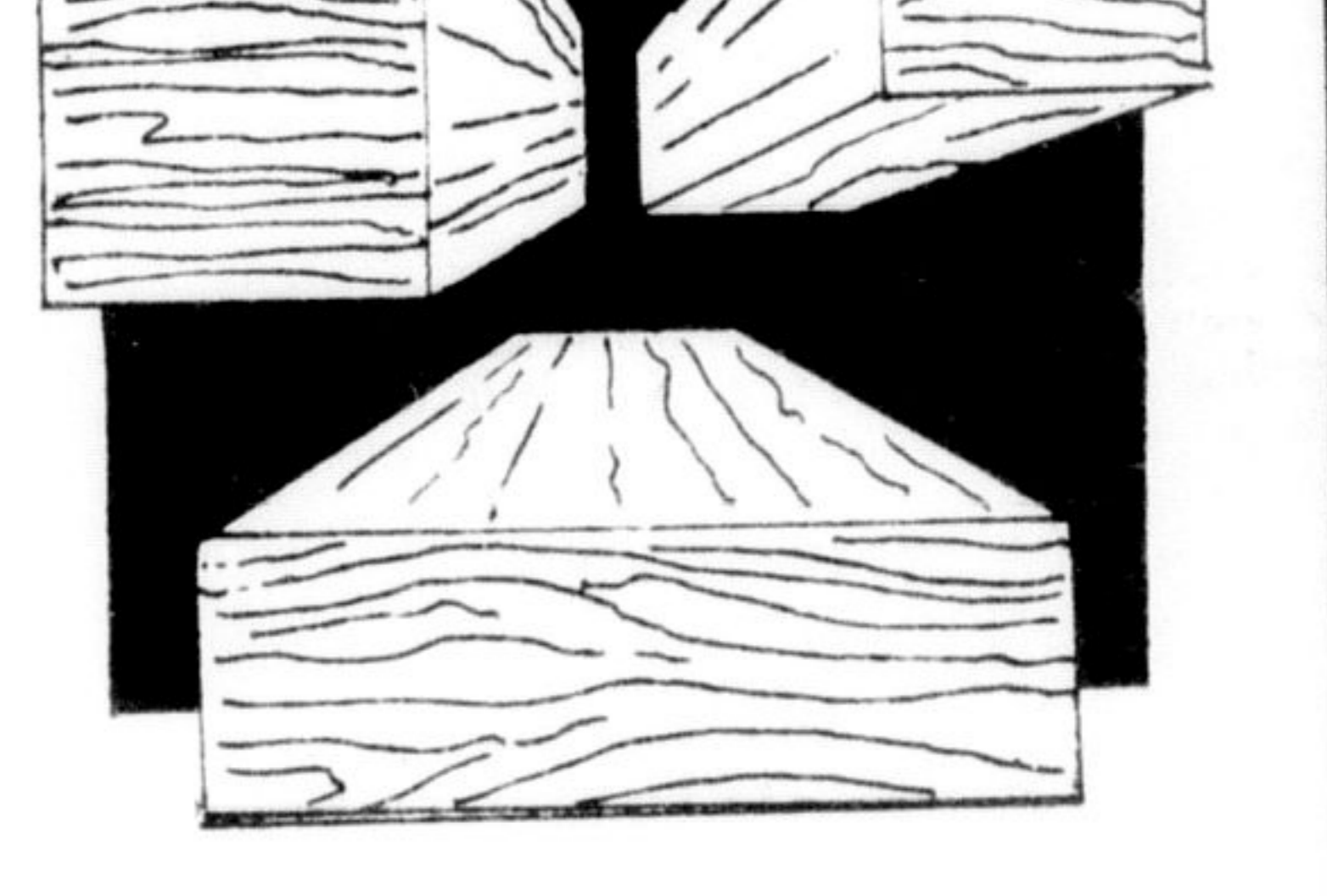
PANELLING

Adds a warm inviting look to any room. Easy to apply with nails or adhesive. 4 x 8 sheets.

SAVE NOW ON THESE POPULAR WOODGRAIN PANELS
FLINT OAK
SPANISH PECAN
GRAND ELM
NOW ONLY \$6.95 per panel

LUMBER

For any home improvements you may be doing.



ASK US FOR A FREE ESTIMATE

SUSPENDED CEILING



Wall moulding around perimeter
Hang main Tees at 4 intervals
4 cross tee every 2 feet
FROM ONLY 37¢ per sq. ft.
Includes lay in panels & grid system. Ideal for rec rooms.

FLINTKOTE PEEL & STICK FLOOR TILES

SPECIAL \$12.95 CTN.
REG. PRICE \$18.95 CTN.


- 080 gauge tile
- 45 tiles per carton
- full cartons only
- 3 colours available

castle building centre COPELAND LUMBER

Your One Stop Complete "Home Improvement Centre"

PRICES IN EFFECT TILL NOV. 15, 1977
WE ACCEPT CHARGES
HOURS
Mon. to Thurs. - 8 a.m. - 6 p.m.
Friday - 8 a.m. - 9 p.m.
Saturday - 8 a.m. - 6 p.m.
Free Delivery

700 Main St. E. MILTON, ONT. 878-8171
JUST EAST OF THE MILTON MALL

The Corporation of The Town of Milton

ABOUT THE NEW REGIONAL OFFICIAL PLAN

THE TOWN OF MILTON WILL BE DISCUSSING, IN GREAT DETAIL, THE NEW REGIONAL OFFICIAL PLAN AND WILL BE FORWARDING OUR SUGGESTIONS AND RECOMMENDATIONS TO THE REGION IN APRIL.

WE WOULD LIKE YOUR HELP.

This new Plan is available free of charge if you call the Regional Planning Department at 878-5571 and ask that a copy be mailed to you.

Study it and if you have concerns, write down the Page Number, Item Number along with your views and mail it on or before March 31st, 1978 to:

Mr. R.J. Zsadyani, Planning Director,
Town of Milton, 251 Main Street East,
Milton, Ontario L3T 1P1

C. THOMPSON, CLERK.