



BEAUTIFUL SMILES FROM MILTON Mustang cheerleaders of the Milton District High School are always on hand at school basketball and other school sporting activities. The cheerleaders recently held a six hour cheerathon to raise money for their uniforms. The girls are, front row, Yvonne Thomson, Beverly Pas-

coe, Beverly Connell and Cleo Van Gemergen. Back row, Susan O'Brien, Julie Hull, Kathy Cheeseman, Lori Hlushko, Colleen Foley and Marisa Piccini. Missing is captain Lynda McCarthy. (Champion photo by Peter McCusker)

Game & Fish News

by arn coulson

How much do we really know about our wildlife? For instance, did you know that the length of daylight during a 24 hour period has a definite effect on some of our wildlife?

It has been found that ducks and geese (and most other migratory birds) are sensitive to changes in the length of day and night (and therefore light and dark) which occurs with the cycle of the season. This sensitivity to length of day and night keeps them attuned to the environmental changes which occur throughout the year and times their seasonal activities.

For example, the spring migration and reproductive cycle of ducks closely follow the increasing hours of daylight in the spring and therefore assures that the ducks will return to their nesting grounds and carry out their reproductive activity at the same time each year.

The same changes affect the nature in which our fish choose their favorite living quarters. Each fish species, according to the temperature it can tolerate, finds its own level and might remain at that level all summer if the light and dark remain fairly constant.

From the moment spring water emerges on the surface of the earth, it is attacked by the hot rays of the sun. Last summer is excluded.

If the stream, regardless of its width or depth, is shaded by dense, towering trees, the water will remain cold, thus creating an environment ideal for trout.

On the other hand, if the trees have all been bulldozed out, as in the 16 Mile Creek in Milton, and the sun has direct access to the stream, nothing in that stream will survive the hot rays of the sun except Carp, suckers, catfish and members of the minnow family.

Mother Nature has a way of protecting her family unaided by man, for instance, where the thousands of large and small roots of a tree act as a net to hold the soil in place, the banks of the river do not wash into the river, except in extreme cases that sometimes happen once every hundred or so years—Mother Nature's way of housekeeping.

BOWLING

CANADIAN METER GIRLS

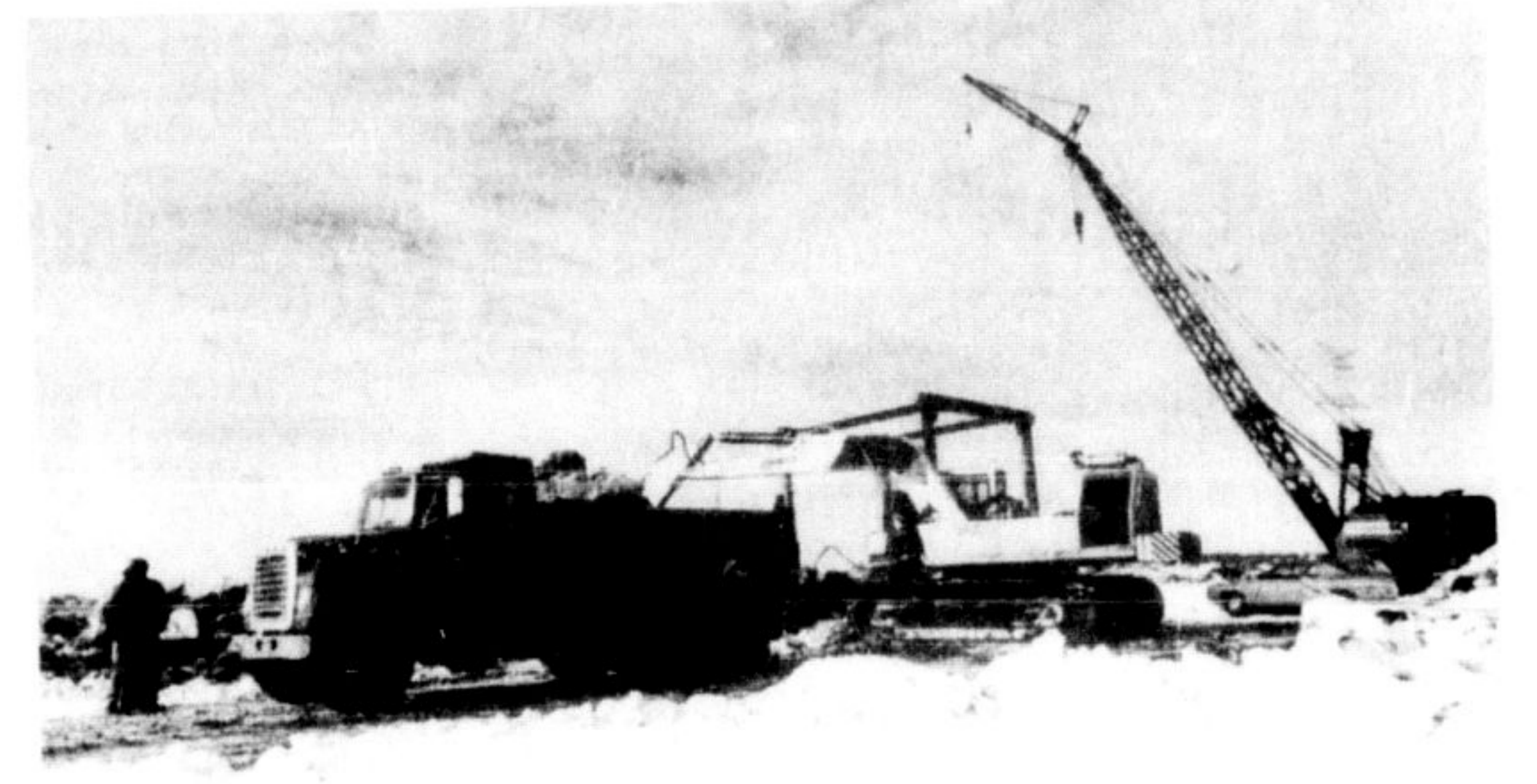
March 2
Ladies' high single, Pat Marshall 285.
Ladies' high triple, Pat Marshall 653.
Other top singles Susan Roger 251, Mary Heipel 249, Jeanette Paquette 237, Barb Jones 237, Rose Dancocks 236.
Other top triples Joan Deforest 643.

Ruth Twiss 635, Jeanette Paquette 634, Pat Campbell 625, Kath Coates 617.
Lawrence won 4 for 94, Currie 2 for 83, Coates 3 for 83, Cann 5 for 81, Steptoe 2 for 80, Husk 5 for 77, Miller 2 for 74, Bailey 5 for 72.
RATEPAYERS
Feb. 28
Ladies' high single Susan Conway 280.

ladies' high triple Marg St. John 701, men's high single, Bryan Cargill 246, men's high triple, Bryan Cargill 658.
Other top singles Marg St. John 275, Glenda Cardineil 273, Bettie Gent 260, Grace Little 248, Charles Crossman 241.
Other top triples Glenda Cardineil 669, Bertie Gent 647, Ron Benson 634, Buck McCallum 633, Susan Conway 621.

Two Hundred and Eighty-Seventh In A Series

A Mark of Progress in Milton



Frankel Steel on Highway 25 north of town is currently constructing a \$100,000 addition to the plant. The addition will contain a second shop, 50 feet by 100 feet, housing four cranes. The firm is located in the former Spancrete plant.

For a progressive Insurance Programme at competitive rates contact . . .

McCuaig INSURANCE LIMITED

Wheeler's face elimination with losses to Lindsay

Milton's Fifth Wheel Major Bantams are facing elimination from OMHA playdowns as they came up one goal short in both games played against the Lindsay bantams.

In their first confrontation, Milton fell from a 6-4 lead in the final period to be defeated 7-6 and in game two they were edged 2-1.

Brent Pastor fed Joe O'Grady with a perfect pass to the point, which O'Grady blasted into the Lindsay net at 7:01 of the first period in the opening game. Lindsay tied the count 1:12 later as Bill Lynch finished off a two-on-one drive.

Five minutes later, Lindsay went ahead as Lynch set up Gord Corneil who fired a shot in high on the glove side of Steve Marshall. Less than two minutes elapsed when Brian Anderchek set up Joe O'Grady's second marker as the Wheelers enjoyed a man advantage. With four seconds

left in the period, Stan Fay nabbed his first goal of the game on a good passing effort with Glenn Brown.

Lindsay tied the game at 3-3 as Erik Ellis scored 24 seconds into the second frame by neatly stickhandling past all the Wheeler defenders, including the goaltender.

Rob Heipel put the Wheelers ahead again as he lifted the puck over a cluster of Lindsay and Milton players after Barry Riebot and Brent Pastor had their efforts thwarted. Three minutes later, on another power-play effort, Brent Pastor blasted one after he accepted a Brian Anderchek pass.

Lindsay replaced their starting goaltender Marty Rhodes with partner Snott Simons. Five minutes later Lindsay drew within one goal as Ron Sharman scored. Following this goal, Marshall was replaced in Milton's goal by his partner, Dan Bonin. In the third period Stan Fay

pulled the trigger at 2:25 as there was a cluster of players around the Lindsay net. The goal, Fay's second of the game, put the Wheelers ahead 6-4 but it was to be their last.

Jeff O'Neil pulled the host Lindsay club within one goal, shooting from the point as an errant pass from behind the Wheeler net was stopped by the Lindsay player. At 8:31 Lindsay knotted the contest at 6-6 as they took advantage of a mixed up Wheeler squad who allowed Lynch to set up Corneil for his second goal of the contest.

With less than two minutes left in the game, Lindsay worked their way into Wheeler territory and this time Corneil set up Lynch for the winning marker.

Sunday afternoon playing at home, the Wheelers engaged Lindsay in a constant see-saw battle through three periods, but came up one short again as the visitors were 2-1 victors.

Dan Bonin for the Wheelers and Marty Rhodes for Lindsay shut out the club until 9:38 of the second frame when the puck ended up on the stick of Bill Lynch who promptly fired it back at Bonin. Bonin got a skate on the puck as it glanced in for the initial score.

Two minutes later Lynch teamed up with "Junior"

Harrison to put Lindsay ahead by two.

The third period featured several good scoring opportunities for both clubs but the goaltenders at either end held firm until the 12:38 mark when, on a powerplay, Brent Pastor pulled the trigger after a neat passing play with Bob Heipel and Joe O'Grady. Bonin was pulled for the final minute and 15 seconds in favor of an extra attacker but even though the puck only came out of Lindsay's end once, the Wheelers were unable to snare the equalizer.

SLAPSHOTS
The Wheelers have played two fine contests with the Lindsay crew and with a couple of breaks for Milton, the outcome in either game may have been different.

The third game in the series was played last night, Tuesday, and if a fourth is necessary it will be at 8:30 tonight in Milton Memorial. Bill Lynch is the leading scorer in the series as the stocky Lindsay player has sniped four goals and also added three assists to pace his club.

Joe O'Grady, Stan Fay and Brent Pastor have all fired two goals in sharing the lead for the Wheelers.

Jack Pearson, Steve Keene, Don Kearney and Don McCheran from the Halton Sportsmen's Club and some friends went on their annual ice fishing trip to Boshkung Lake in the Haliburton district and came home with 12 lake trout.

Jack Pearson, the party's public relations man, journeyed from ice hut to ice hut spreading good cheer and good wishes, as well as encouragement. Jack was well rewarded in return with good cheer and that's what a weekend's fishing is all about—good friends and good fun.

Jim Coulson of Lowville had his spring dance at the club house on Saturday evening and was rewarded with a full house. Jim and his wife Linda do a good job of being hosts.

Was good to see former member George Presniak and Dorothy at a recent function at the club house. George and Dorothy have moved to Acton and we do not see enough of them anymore. George was entertainment chairman at the club for a few years, doing a fine job. See you fishing, George.

SCUBA DIVERS

(CERTIFIED OR PRE-OPEN WATER)

Isn't it time Milton had its own SCUBA CLUB. If you are interested in beginning a club locally come out to a "LET'S TALK ABOUT IT" night at the ROTARY PARK CLUBHOUSE

Monday, March 13, 1978
at 8:00 p.m.

MUFFLES

thruway
mufflercentre

701 MAIN ST. E.

Captain Quiet
TAKES YOU THERE

HWY. 401
STEELES AVE.

MARTIN ST. ONTARIO ST. WILSON AVE. THIRD LINE
MAIN ST.

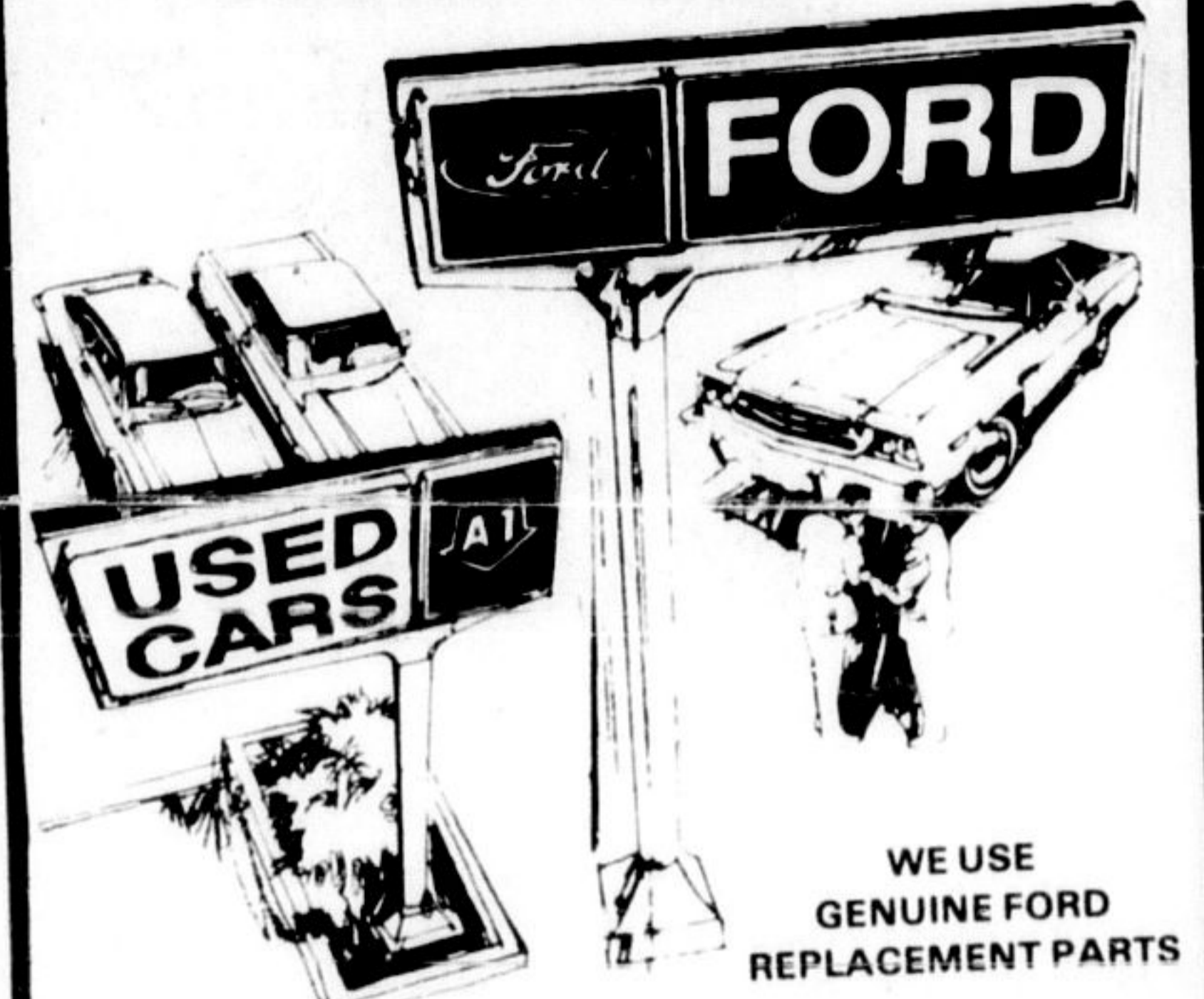
Hours:
Mon.-Fri. 8:00-6:00
Saturday 8:00-2:00

master charge CHARGE X
HONOURED

701 MAIN ST. E.
(Right across from Copeland Lumber)

878-8819

TRAFALGAR



Word of mouth is our best advertisement. Please don't change it. If you have a complaint about our Sales, Accounting, Parts or Service; please let us know. We will do our best to satisfy you.

Thank you for your co-operation.
Parts and Service Hours:
Monday to Thursday 8 a.m. to 5:30 p.m.
Friday 8 a.m. to 5:00 p.m.
Closed Saturdays

Our new service number 878-7253
Our new parts number 878-7293

Please watch this ad for service specials.

TRAFALGAR



409 MAIN STREET
Serving MILTON Since 1960

Take a Break



with Murray Hood

Equal rights for the sexes will be achieved only when some mediocre women occupy high positions.

We won't comment on what's been happening in the stock market, but one Wall Street bar is serving industrial-strength martinis.

Don't knock the rich. When was the last time you were hired by somebody poor?

Anybody who says life is just a bowl of cherries is bananas.

Psychiatrists who tell parents to spend more time with their children are just trying to drum up business.

Bring your business to Speed Queen Laundromat and dry cleaning, on Main St. next door to the Credit Union. We won't shrink your wallet when we do beautiful work on delicate wools.

CTC midgets advance . . .

(Continued from Page B1)
Norm Flemington was the hot shooter for Milton with a hat trick and an assist while captain John Loeprich and Doug Dorsey added singles. Ian Wanless assisted on two overtime goals to help in the victory.

In this game Guelph took a 2-0 lead as Milton had done in the opening game of the series. Randy Mann and Don Brown scored for Guelph early in the second period. Flemington scored one from

Gerry Mazarato in the second and Flemington assisted Dorsey in the third period to tie the game.

—Cross country skiers are having fun at Bronte Creek Provincial Park these sunny weekends.