

Farm factions can't agree on development rights

A meeting convened by the Halton Region Planning Committee Saturday morning failed to close the gap between two opposing factions in the farming community.

The Halton Federation of Agriculture does and has traditionally favored the freezing of prime foodlands in the region, providing that farmers are compensated for the loss of development rights.

But a position voiced by the South Esquering Ratepayers' Association opposed any control or restriction that could prohibit them from selling their land to the highest bidder.

While some of the animosity that has been evident between the two groups in past meetings wasn't prevalent Saturday, it appeared that the positions couldn't be reconciled.

The meeting held in Milton was instigated by the Regional Planning Committee in the hope that by bringing the two factions together, one clear position for farmers could be taken.

Halton region is currently in the process of developing an official plan and one of the most controversial areas of that plan deals with a food-land designation.

The draft official plan contains a clause that would freeze farmlands but makes no provision for compensation of lost development rights.

Ed Segsworth, Chairman of the Segsworth's Land Use Committee, said, "The Halton Federation of Agriculture feels that rural lands should retain the present agricultural zoning for the duration of the plan, unless full and adequate compensation is offered to farmers that will be locked into the 'food-land' designation."

Rod Pinkney, a member of

the South Esquering group said the plan should be more flexible. He claimed there was no shortage of food or foodland.

"I don't want the clamps put on people who have the initiative and who can make this country work and get us through tough times."

He said there were a lot of people living in cities and towns who would like to live on five or 10 acres in the country. "Let them have a chance to enjoy life while they are here," he said.

Retford Gardhouse said he opposed any restriction on the sale of his land unless there is compensation. "I have five hydro towers coming through my farm. I want to be free to move. If you have to sell, you don't want to sell for less than market value," he said.

Mrs. Sally Young made it clear that she opposed government intervention that would save foodlands for society at the expense of the farmers.

"Why would a young man want to go into debt for 20 or

30 years to have the privilege of working seven days a week for half the salary he could earn in five days in the town?" she asked.

Mrs. Phylis Ferrier said she wanted no planning in the rural area at all. "If someone wants to work his guts out for the rest of his life, that's up to him—but if I want to sell, that's up to me."

Halton Hills Councillor Roy Booth said he agreed with Mrs. Ferrier. "You're absolutely right. The references to the green paper and code of practice have to come out of there (the plan)."

Jack Martin, a lawyer and farmer, said he didn't trust government at any level. "Farmers survive in spite of government, not because of it. They'll freeze your land at \$300 an acre and then buy it up. You have to protect your backside. If you don't, no one will."

Dr. Carl Martin of Milton said the government doesn't have the right to control the land. "Let the land be free and work on a method to help

the farmer make a living." Murray Harris said that planning had to take place in the rural areas to protect farmers. "If you don't plan it now, it won't be here later."

Harris contended that builders had acquired all the land they need for some time and he indicated the bottom had fallen out of the speculative market.

He reminded farmers in the Esquering area that the Federation had fought to keep

a theatre, a landfill site and a dragstrip out of that area. "We fought to preserve green space. These developments wouldn't have been conducive to your way of life."

Milton Mayor Don Farmer said farmers didn't want compensation from government—but freedom to do what they want in the market place.

Tom Foster said it was a waste of time to even think about compensation.

Region levy-\$7,161,098

Halton Region will raise \$7,161,098 in interim taxes to the four area municipalities. Halton's Administration Committee is recommending that half of the levy come due Feb. 28 and half April 28.

The region will collect \$3,334,610 from Burlington, \$2,588,858 from Oakville, \$607,716 from Milton and \$629,814 from Halton Hills.

The interim levy is based on 50 per cent of the final levy for the previous year. The

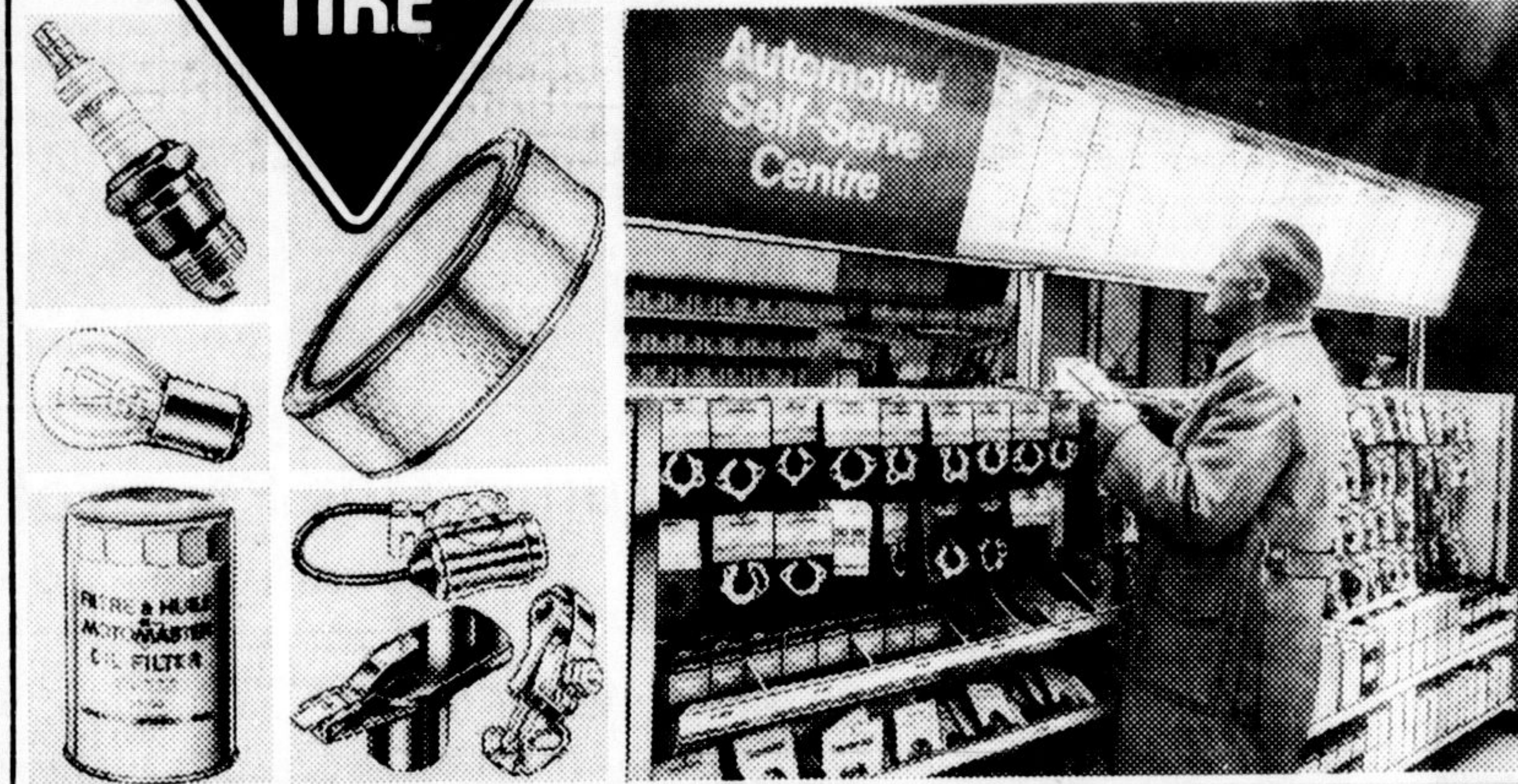
levy is used to reduce the amount of borrowing that is required.

In the case of Milton, the first instalment for ratepayers to the town is Feb. 20 and the second is April 17. In the other three areas' interim levies are due Feb. 28 and April 28.

—Scout and Guide groups are parading to Holy Rosary Church from the Legion Hall Sunday at 2, for their annual church parade.

INTRODUCING

SELF-SERVE PARTS



The NEW way to save time

For the do-it-yourself auto enthusiast

NO LINE-UPS! Waiting in line at a busy parts counter can be annoying. Especially if it takes longer to get the part than it does to install it. With this in mind, Canadian Tire developed the Automotive Self-Serve Centre. We've fully stocked it with a wide range of parts covering your basic automotive needs. Included are oil, air and gas filters, most ignition parts, and a wide range of lighting and electrical products. And best of all, you can find them fast by referring to the easy-to-read data display located right there where you need it, above the shelves.

Save with Cash Bonus Coupons or use your Canadian Tire Card

. . . . We've made it faster and easier for you to buy parts

Use Your Canadian Tire Card or SAVE with Cash Bonus Coupons on all parts.

Your direct line to the experts...

878-2349

JUST SOUTH OF 401 ON HWY. 25

Open Mon.-Sat. 9-6

Thurs. & Fri. till 9

For North American and Foreign makes

Canadian Tire is a leader in auto parts and we intend to keep it that way. We stock parts for most popular domestic and foreign cars plus light trucks, campers and vans. All are easily accessible to you. And if you need any tools, lubricants or other aids, you're in the right place. Your Canadian Tire Store has a large stock of automotive parts and related merchandise priced to save your money.

If you don't see it—ASK US!

A fully qualified parts man will still be on hand to answer any questions or problems you have. For parts required in more complex repairs, a full range is available from our parts counter.



Brakes!

Drum or Disc Brake Service

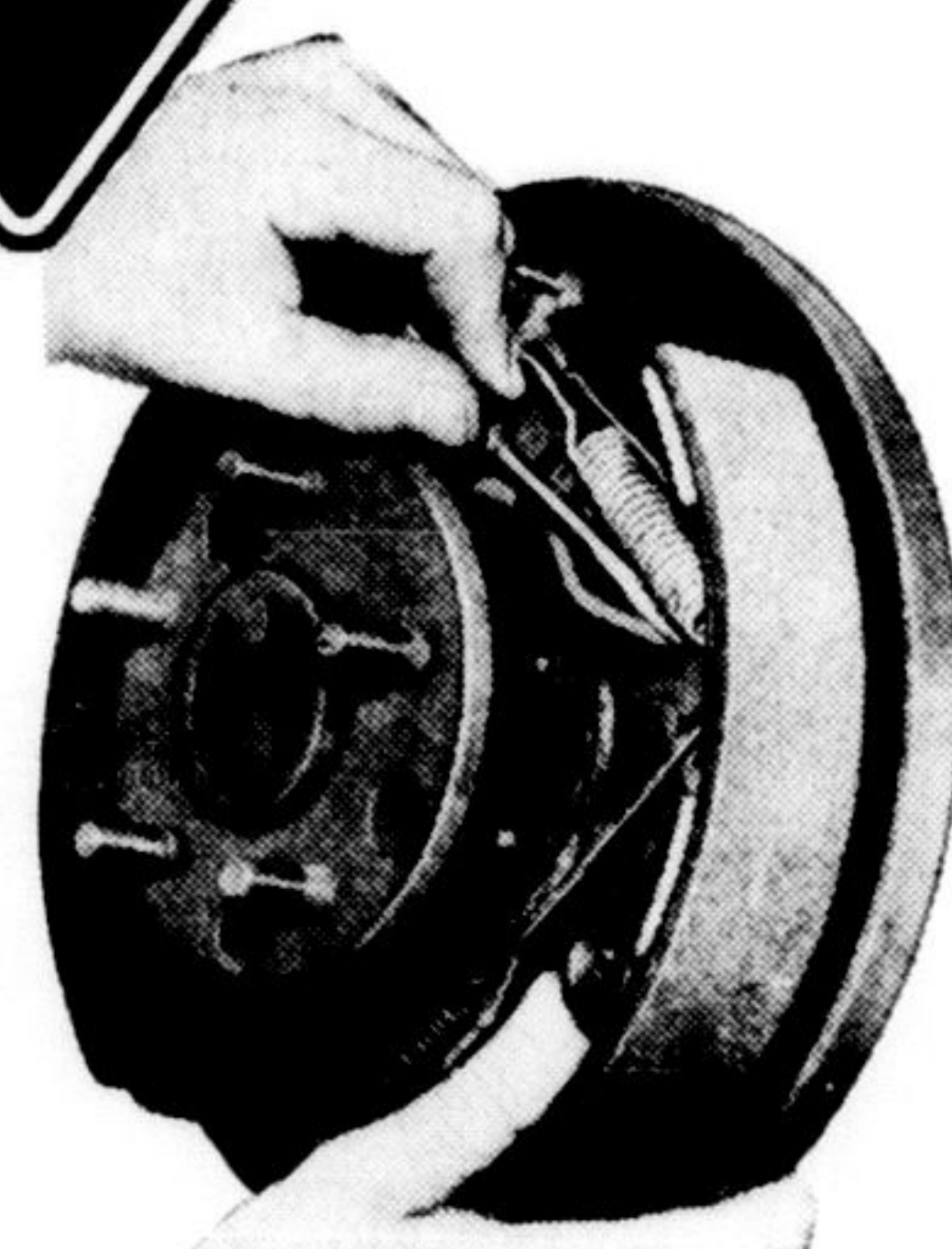
30% OFF

One week only!

INSTALLATION CHARGES



Moto-Master Parts and Service Guarantee



All Moto-Master Brake Shoes, Disc Brake Pads and Brake Shoes are guaranteed against manufacturing and material defects for 12,000 miles or 12 months (whichever occurs first). In addition, when a complete brake overhaul is carried out by a Canadian Tire Service Centre, 14 wheels, rimmed, or rear wheels, rimmed and disc pads replaced on front wheels, wheel cylinders overhauled or replaced, parts and shop charges are both covered for the full 12,000 miles or 12 month period (whichever occurs first).

SERVICE SHOP SPECIAL

For popular makes of cars equipped with **BRAKE SHOES**

as stocked by your Canadian Tire Store

ex.: Full size 1958 - 1970 Chevrolet & Canadian Pontiac

2 FRONT WHEEL SETS

Custom-Bonded Linings \$8.49 exchange

PLUS

2 REAR WHEEL SETS

Custom-Bonded Linings \$7.49 exchange

\$15.98

4 WHEEL SET
Installation Extra

DISC BRAKES

as stocked by your Canadian Tire Store

INCLUDES MOST POPULAR CARS

Example: 1973 - 1975 Dart and Valiant

2 FRONT WHEEL SETS

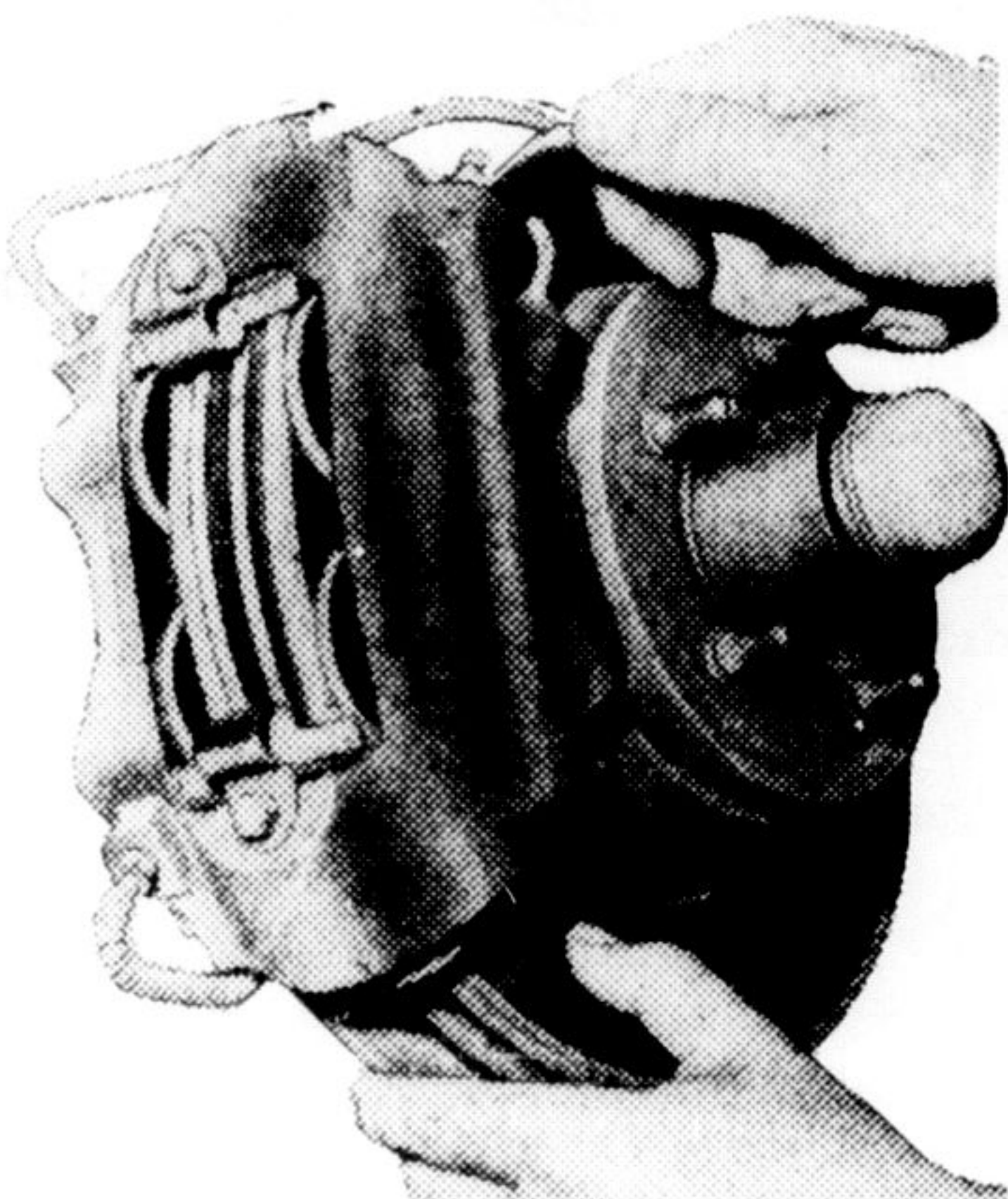
Riveted Disc Pads \$13.49

2 REAR WHEEL SETS

CUSTOM BONDED LININGS \$ 9.49

\$23.98

4 WHEEL SET
Installation Extra



OIL CHANGE-LUBE & FILTER

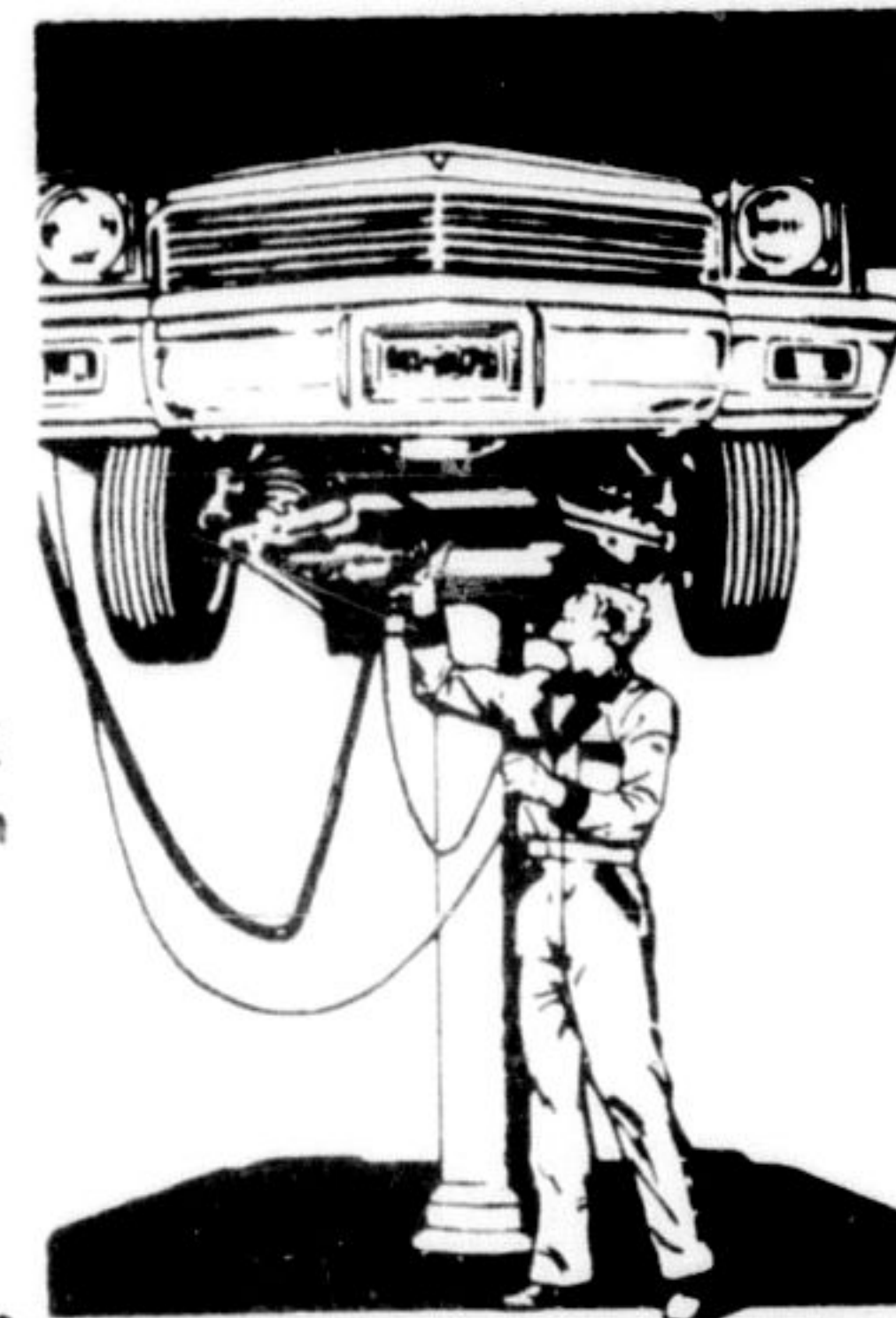
9.99

Reg. \$14.51

Reg. \$14.51

INCLUDES

4 QTS. MULTIGRADE OIL supreme 10W30 warranty approved, COMPLETE CHASSIS LUBE, MASTER CRAFT spin on oil filter - most trucks excluded extra oil \$1.14 qt. if necessary.



WITH EVERY LUBE & OIL JOB WE DO A THOROUGH CHECK OF...

- WIPER BLADES • BATTERY & CABLES • RADIATOR • MIRRORS
- UNIVERSAL JOINTS • STEERING LINKAGE • SHOCK ABSORBERS • LIGHTS
- FAN BELTS • HOSES • TIRES (INCL. SPARE) • MUFFLER SYSTEM • ALL FLUIDS

9 SERVICE BAYS 878-8393



Use Your Canadian Tire Card or Save with Cash Bonus Coupons on all parts

JUST SOUTH OF 401 ON HWY. 25

Open Mon. - Sat. 9-6

Thurs. & Fri. till 9

878-2349 OR SERVICE 878-8393