



TAKING ADVANTAGE of the ice surface at the Mill Pond are Godfrey Marchand, playing goal, and his son Jean Paul. Cold temperatures over the past week and a half made it possible for

many students and families to take advantage of the large frozen pond, over the Christmas holidays.



WHILE AWAY FROM SCHOOL during the Christmas holiday many students took advantage of the frozen Mill Pond in Centennial Park. Pickup hockey games or pleasure skating were evident during most of the holiday period because of cold temperatures combined with little precipitation.



SHOPPING DRAW WINNER Mrs. Jeanne Walden of 105 Bell St. Milton won a \$50 gift certificate at Flora Shoppe during Milton Downtown Group's annual pre-Christmas shopping draw. Clerk Theresa deBruyn helps her pick out a suit.

To Set a Man Apart

Knights

MEN'S WEAR LTD.

102 MAIN ST. MILTON
878-4472

Philosobits

By Edith Sharpe

Money may buy a fine dog, but only kindness will make his tail wag.

Anger can be not only a way of expressing love, but also a way of being honest with others. We do a great deal of shadow-boxing in our relationships. We do not let people know our true feelings, and they also hide their feelings from us. It is no wonder that under these conditions we seldom feel close to others.

MILTON TELEPHONE ANSWERING SERVICE

- CONFIDENTIAL
- COURTEOUS
- PERSONALIZED

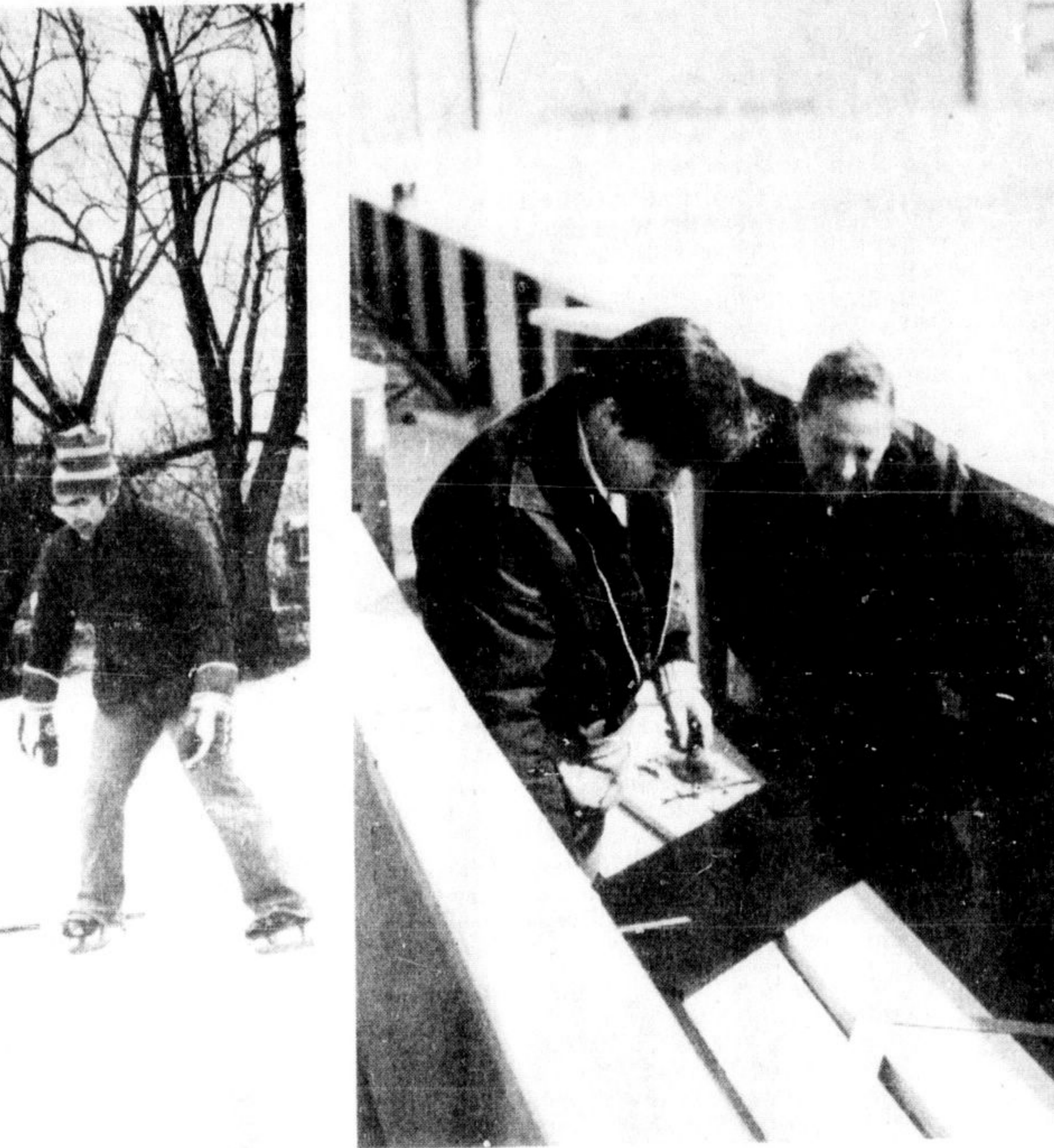
878-2020

ELECTRICITY Is Our Business

Don't be a Tinkerer with electricity. Call an expert for

- Heating
- Wiring
- New Circuits
- Additional Outlets
- Outdoor Lights

FEATHERSTONE ELECTRIC
878-6378



PUTTING IN THE RUBBER flooring for the players' benches and penalty box at Milton's new Sports Centre are Whitney Construction workers. The complex was to be ready for Monday's public skating program.



PUTTING THE FINISHING TOUCHES on Milton's new Sports Centre is one of the painters contracted to work on the job. Work was scheduled to be completed Monday, in time for the public skating program.

This week in pictures



A PORTABLE TV offered at Gerry's Pure Food Bakery was one of the prizes in Milton Downtown Group's annual Christmas shopping promotion and owner Gerry Timbers is pictured presenting the 12 inch black and white set to winner Bev Lidstone, 341 Wilson Dr. A total of 25 merchants participated and offered over \$1,000 in prizes.

Dine at **HARROP OF MILTON**
878-8161

Fay's Electric CO. LTD.

ELECTRICAL CONTRACTING ■ INDUSTRIAL MAINTENANCE

POLE LINE CONSTRUCTION ■ AERIAL LIGHTING

878-2048
583A MAIN ST. E. MILTON, ONT. L9T 3J2

91 MAIN BOOK SHOPPE

91 MAIN BOOK SHOPPE

91 Main St., Milton
(Next door to the Pine Tree)

NEW HOURS

MONDAY - CLOSED
TUES. - WED. - THURS. - 10 - 6
FRIDAY - 10 - 9
SATURDAY - 10 - 6

Phone 878-3020

We Accept ChargeX and Master Charge

... If I could have my pick ... I'd like my flowers sent through

Milton Greenhouses
Flower & Gift Shop

228 Main St. 878-9501

Wedding Bouquets our specialty

DROP IN FOR FREE BOOKLET

- Cheerful arrangements • Bright bouquets
- Indoor green plants • Gift selection

NOTE: We invite you to bring in your own planters, dishes and vases ... one of our creative designers will create a personal arrangement ... just for you!

We deliver to all Milton and Campbellville areas

THE HALTON BOARD OF EDUCATION JANUARY NIGHT CLASSES AT MILTON HIGH SCHOOL

REGISTRATION: Milton High School. Tuesday, January 10, 1978 from 7:00 to 9:00 p.m.

FEES: Payable on registration. Cheques should be made payable to: The Halton Board of Education.

SIMILAR CLASSES are being offered throughout Halton Region. For further information, call the Adult Education Office, 335-3663, from 8:30 a.m. to 4:30 p.m.

SEMESTER II CREDIT CLASSES in Burlington and Oakville will begin the week of February 6, 1978. For further information, call the Adult Education Office, 335-3663, from 8:30 to 4:30.

ALL CLASSES ARE EIGHT WEEKS IN LENGTH, UNLESS OTHERWISE NOTED

COURSE	STARTING DATE	TIME	FEE	INSTRUCTOR
Auto Maintenance (Women)	Mon. Jan. 16	7:00-10:00	\$25	Miller
Blueprint Reading & Drafting	Mon. Jan. 16	7:00-10:00	\$20	Douglas
Bookkeeping for a Small Business	Mon. Jan. 16	7:00-10:00	\$20	Leonard
Bridge	Tue. Jan. 17	7:30-9:30	\$12	Foley
Brush Up Typing Skills	Mon. Jan. 16	7:30-9:30	\$12	Hymers
Ceramics	Tue. Jan. 17	7:30-9:30	\$20	Ringrose
Community Theatre for Adults	Tue. Jan. 17	7:00-10:00	\$22	Kearney
Creative Needlework	Mon. Jan. 16	7:30-9:30	\$12	Meadows
Drawing & Sketching	Wed. Jan. 18	7:00-10:00	\$20	Ringrose
Fitness & Recreation	Mon. Jan. 16	7:30-9:30	\$12	O'Neil
French for Beginners (15 weeks)	Wed. Jan. 18	7:30-9:30	\$22	Staff
Furniture Refinishing	Tue. Jan. 17	7:00-10:00	\$23	Jensen
Guitar	Mon. Jan. 16	7:30-9:30	\$12	Broughton
Macrame	Tue. Jan. 17	7:30-9:30	\$12	Zanatta
Metrication (13 weeks)	Tue. Jan. 24	7:30-9:30	\$2	Staff
Painting: Water & Acrylics	Mon. Jan. 16	7:00-10:00	\$20	Ringrose
Photography	Tue. Jan. 17	7:30-9:30	\$13	Apted
Typing: Beginners	Mon. Jan. 16	7:30-9:30	\$12	Hymers
Wool (Rug) Hooking	Tue. Jan. 17	7:30-9:30	\$12	Collins
Yoga: Beginners	Mon. Jan. 16	7:30-9:30	\$12	Somerton
Yoga: Intermediate	Tue. Jan. 17	7:30-9:30	\$12	Somerton

NOTE: Some shop courses cost considerably more than the regular fees. Extra fees have been charged to cover the cost of consumable supplies. Students are expected to provide their own materials where applicable e.g. Craft Classes, Painting, Furniture Refinishing, etc. Ceramic students will buy their supplies directly from the Instructor.

ENGLISH FOR NEW CANADIANS

Persons wishing instruction in English (New Canadians or others who wish to improve their spoken and written English) may enroll at Milton District High School on any Wednesday, beginning Wednesday, January 4, 1978, from 7:30-9:30 p.m. Fee for the course is \$5.00.

D.G. MORTON, CHAIRMAN
E.S. LAVENDER, DIRECTOR