

BIDDING WELCOME to Steam-Era and Milton visitors is the now-silent 40 ton locomotive in Unity Park, symbolizing the town's connection with Steam-Era. The steam locomotive is on permanent loan from the Ontario Rail Association and is located near the town's former CNR station that now

serves as an information centre. It was moved there and restored by the Milton Chamber of Commerce. The station was built in 1903 and stood at Bronte St. until last year. The Steam-Era reunion, this Friday, Saturday and Monday, has made Milton the "Steam capital of Ontario." (Staff Photo)

Over 500 sign

Arena petition gains momentum

Over 500 people have signed a petition calling for a halt to the sale of the old Armstrong Arena on Brown St. and the twinning of Milton Memorial Arena.

The petition, initiated by Blanche Hinton, asks town council to justify its position both in an economic light and from the point of view of people's feelings.

Mrs. Hinton told The Champion that over 500 people had signed and at least eight canvassers still had more sheets out. The sheets yet to be returned could represent another 300 signatures.

Mrs. Hinton suggested the reaction was spontaneous. "I've done nothing, people have been coming in to the store signing it and some who feel strong enough take sheets out to be signed!" She is proprietor of Milton Variety Store, Main St.

Mrs. Hinton said several people had offered to assist in any way they could to save the Brown St. Arena from demolition.

Present petition

Along with her supporters, Mrs. Hinton will appear before Milton Council next

Tuesday night to present the petition. She anticipates a large number of people will attend the meeting.

"There is a great variety of feelings. A lot of the less affluent people live on or near Main St. Many people do not have cars. If the arena goes, their children can't skate, can't watch hockey and can't play hockey."

"You'd be surprised how many people don't have cars

in this immediate area. They can walk to the old rink now," Mrs. Hinton noted.

"That's one group. Another group includes people 50 and over, who reckon the arena has served us well and there is no reason to pull it down. We paid to build it and we'll pay to repair it," they say.

"A lot of people seem to feel it is time council started to look at people—not just dollars and cents. Some say that if

you can raise \$92,000 for a Thompson Rd. arena, you can do it here (Brown St.)"

Many questions are being posed now. People are asking if there will be roller skating or public skating and others ask if public transportation will be available to and from the new rink.

Mrs. Hinton acknowledged that even she is a bit surprised about the number of people who are making the effort to drop in the store and sign the petition. With the exception of contacting some Main St. businessmen, Mrs. Hinton has relied on people coming into the store. They have been coming in droves.

Debate issues

Ever since a story on the petition was published in this paper last week, her store has served as a makeshift "hot stove league" where residents gather to discuss local issues. Discussion inevitably starts with the arena situation.

The petition is scheduled to be presented Tuesday at a meeting of Milton Council and the following Monday tenders on the twinning project are expected to be reviewed by Council.

Critical arena meeting Sept. 13

Fund raising continues petition causes concern

The Arena '76 fund raising committee will meet immediately after Milton Council considers tenders for the construction of a new arena Monday, Sept. 13.

In calling the meeting, Chairman Bill Rowney this week warned committee members they might have to make some fast decisions.

The committee's job of raising \$92,000 has been complicated by a petition now being circulated, which calls for a halt to the sale of the old arena and a halt to the construction of the new one until after the people have had an opportunity to hear council justify its position.

The committee hopes that the council will make its position very clear and remove any doubt about what course the town will take.

Meet clubs
Mr. Rowney noted the fund raising committee is scheduled to meet with service club representatives Sept. 14 to present its plan of attack and ask the service clubs for assistance in the campaign.

Councillor Jim Kerr opened discussion at Monday's committee meeting when he suggested he was getting feedback on the location of the rink.

Councillor Don Gordon urged the committee not to waste time on what will ultimately be a political decision and one that will be made by council.

Secretary Marty Caputo said he had discussions with Mayor Anne MacArthur and several councillors. He indicated the mayor and some councillors are very concerned about the protest.

Hold off?
Chairman Rowney suggested perhaps the committee should hold off until the critical decision is made.

"We can't move ahead successfully and hold off. If council alters its view, then this committee has to alter its stance," said public relations

chairman Jim Dills. Later during the meeting Gus Mowbray said, "It is hard to get the campaign off the ground if council doesn't go ahead. We have to know where we are going."

Disband
Councillor Don Gordon suggested that if there was a lot of flip-flopping at the council level, the committee might just as well disband because the hours of work and planning would be undermined.

A motion by Fred Rigo urging the committee to reaffirm its goal as twinning the arena was withdrawn—after the committee was advised it should not confirm a position it had never taken in the first place. Mr. Dills suggested it was council

which made the decision to twin the new rink and it was council which would have to reaffirm it, if anyone does.

Reporting on behalf of the public relations committee, Mr. Dills said plans for the kickoff were well underway. On his recommendation the committee agreed to hold the kickoff cornroast and dance downtown. The committee had earlier agreed to hold it at the new arena parking lot on Thompson Rd.

"There is no enthusiasm for cooking corn in the parking lot or dancing in the dirt," he said.

Mr. Dills reviewed the arrangements the committee had made to date and indicated a number of sub-committees had been formed to deal with various aspects of the kickoff.

Street dance

Corn, hot dogs and cider will be served and plans for a street dance are being made.

Treasurer Don Lougheed informed the committee the income tax department will allow contributions to the fund to be tax deductible. He reported there is \$2,075 in the account already.

Mike Ledwith said a fundraising letter would be going out to industries this week or early next week, and he suggested including brochures with the letters. The brochures explain why the campaign is necessary, why the arena is being twinned and how the project is being funded.

Gord Cartwright advised the committee that Milton Junior B's would play against the Newmarket Junior A club in a fund raising hockey game Sept. 10.

No parade outside Steam-Era

Miltonians are reminded there will be NO Steam-Era parade through the town this weekend.

The Saturday noon hour parades from the Mall to the fair grounds via Main St. have been popular features of the labor day weekend steam and antique reunions for several years. But organizers this year dropped the parade due to several problems in staging it.

Sponsors promise daily 4 p.m. parades of equipment in front of the 7,000-seat grandstand in the fair grounds, Friday, Saturday and Monday.

Improve Guelph Line for Mohawk Raceway

Halt Regional Public Works staffers will investigate terms of a cost sharing program with the Ontario Jockey Club to pay for improvements to the Guelph Line.

The Ontario Jockey Club is expanding facilities at Mohawk Raceway by 40,000 square feet at the grandstand. According to a report presented to the works committee the addition will increase attendance and

magnify traffic congestion in the area.

Approximately 3,000 cars are expected to arrive and depart from the track at peak periods. The plan advanced to the committee envisions widening the Guelph Line to four lanes from Highway 401 to the existing north entrance to the raceway. As well the Guelph Line will be offset to the west and a major exit to the east will be provided for racetrack traffic. The inter-

section of the proposed race-track entrance and the Guelph Line will be signalled.

The total estimated construction cost for the proposed work is \$181,600. Works director Bob Moore noted the Jockey Club has agreed to fund the entire work with the region paying back its share in 1977. There is no provision for funds in the 1976 budget. The new extension will be opening in October of 1975.

Grant changes arena \$ figures

Some fine print-reading by Parks and Recreation Director Bob Small netted the town an extra \$12,500 in the form of Community Centres grants for the twinning of Memorial Arena.

Original forecasts for the proposed \$350,000 addition estimated a \$75,000 grant from Community Centres which is the maximum amount for a project.

Mr. Small, however, pointed out that the complex will include a community room for meetings, about the size of a classroom, and under Community Centres legislation that qualifies as a separate entity. Mr. Small sent in the town's application,

and a grant of \$87,500 resulted.

This grant alters the amount available through WinOntario, which is limited to one-third of the remaining cost. At the estimated \$350,000, minus \$87,500, the WinOntario grant would be one-third of \$262,500, or \$87,500.

The figure of \$87,500 is now the amount needed by the Arena '76 Committee, although their aim is \$100,000. All funds over the Wintario figure are slated for an indoor pool. Mr. Small estimates he could get as much as \$250,000 from Community Centres for that development, if it is ever built.

Woman killed as car rolls

A Burlington woman died early Saturday morning when the car she was driving went out of control on the First Line one mile south of Britannia Rd.

The car, a convertible, hit a bridge abutment, rolling over and throwing the woman into a ditch. She died of head injuries.

Mrs. Trudy George, 28, of 1256 Guelph Line was driving with her brother-in-law William George, member of the armed forces stationed in Dartmouth, N.S., when she lost control of the car. It had 90 seat belts, police said.

Improving
Mr. George is "improving satisfactorily" from abrasions, lacerations and contusions, according to a Milton District Hospital

spokesman.

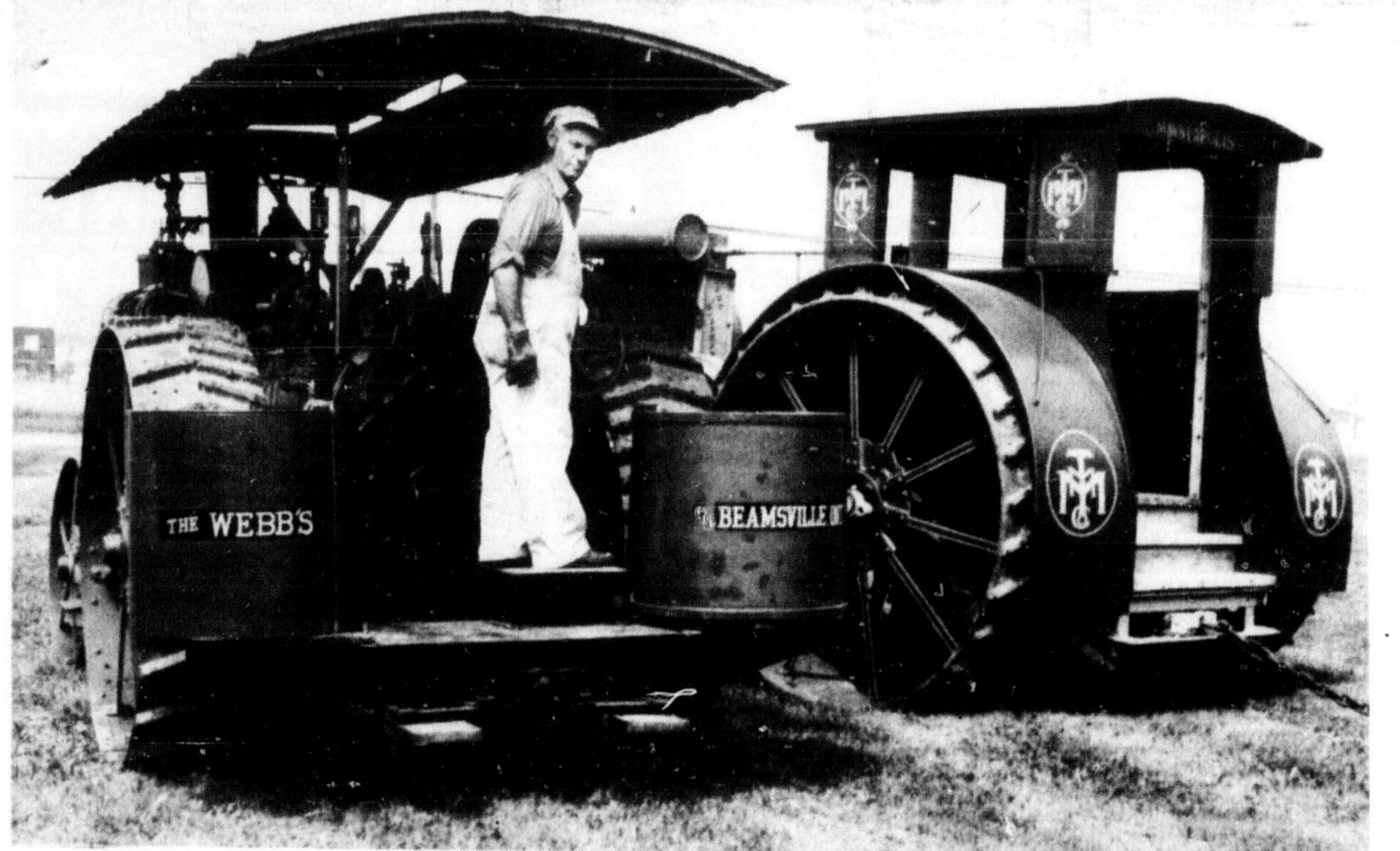
Halt Regional Police were called to the scene at approximately 5:30 a.m., when Mr. George walked to a neighboring farmhouse for help. Police estimate the time of the accident as 3:30 a.m.

An autopsy will be performed this week.

Funeral service was held Monday afternoon at the Rumley-Shoemaker funeral home, Acton, with interment in Fairview Cemetery.

Mrs. George is survived by children Margaret, Cathy and Angela; parents Fred and Margaret Spear of Hillsburgh, formerly of R.R. 2, Acton, and grandmother Mrs. Maude Spear of Acton.

She attended Woodside public school and Erin high school.



ALL STEAMED UP for this weekend's 16th annual Steam-Era show in Milton is Ontario Steam and Antique Preservers Association president Dennis Webb of Beamsville. His steam engine at left is a 1923 Minneapolis. On the right is a 1916 Minneapolis gas tractor, owned by Sherwood Hume of Milton, club secretary. Steam-Era runs Friday, Saturday and Monday at the fair grounds.

Steam-Era show this weekend nostalgic glance at our past

Steam-Era, the 16th annual reunion of the Ontario Steam and Antique Preservers Association, comes to Milton this holiday weekend to present a nostalgic glance into Canada's agricultural past.

"I'm hoping for good weather and another 30,000 crowd," said Dennis Webb of Beamsville, president of the 400-member club which organizes the annual steam and antique equipment reunions.

Friday, Saturday and Monday (the grounds are closed on Sunday) about 25 antique steam engines, over 80 gas tractors, 200 gas engines, 100 models and dozens of restored antique cars and trucks will hoot, toot, rumble, grind, puff, chug, pop, sputter, push, pull, smoke and backfire around the fair grounds.

Although some are stationary exhibits, many will be mobile, running under their own steam and demonstrating their pioneer-style skills.

Steam-Era is Ontario's largest and most complete steam show, although there are currently nine others vying for the title. President Webb describes it as "a collection of all that is good from Ontario's rural past."

A new feature this year is a country and western music talent contest, being organized by Milton Chamber of Commerce for Saturday at 8 p.m. in front of the grandstand. It's the only evening entertainment, as the show closes at suppertime each day. Grounds are open at 8 a.m.

Another feature returning from last year is the old-time threshing competition, wherein sheaves are stoked, loaded and unloaded into a separator and the first team finishing is the winner. It began at Steam-Era last year but due to poor weather conditions only an abbreviated contest was held.

West wins

A team from Saskatoon, Sask. defeated the host club

by six seconds to win the title and a Chamber of Commerce trophy. A new team from the west is coming to this year's show to challenge the Steam-Era club team, and it's being billed as a "world championship" event.

Daily contests, open to the public, will be held in log sawing, sheaf tying and bag tying. Ross Calder of Cambridge, a past president of the club, will emcee the daily program in front of the grandstand.

The club promises daily parades in the grounds, but the parade through Milton Mall and downtown Milton is cancelled this year—so patrons will have to go into the grounds to witness the era of steam.

Buildings will house antique farming implements, food concessions, souvenir stands, miscellaneous antique displays, models and special exhibits. The women of Steam-Era plan a tent demonstration of crafts including rug hooking, spinning and weaving.

Sell cheese
There's also a country store selling genuine Canadian cheddar cheese plus a trading post where anything and everything will be offered for sale.

One of the world's largest, loudest musical instruments, a 79-year-old, 66-whistle steam calliope is one of the more noisy exhibits planned. Drawn by horses, the old circus steam organ plays a merry tune.

The club's own sawmill is another special exhibit. It cuts huge logs all day long under steam power.

Admission this year is \$2 for adults and \$1 for children under 14. Any children accompanied by a responsible adult are admitted free.

Equipment began moving into the fair grounds Monday of this week for the big show. Hume Transportation of Milton is trucking most of the big tractors and steam engines to Milton and some of it is coming from widespread areas Ontario.

Inside today

- † Canada Cup preview, see Sports, this week on Pg. B 1.
- † Corn Cob Capers at Mountsberg—sounds like fun, C 1.
- † Classifieds, in a new location this week, B 4 to B 12.
- † A new Champion column, "Between the Willows", B 14.
- † The Legion president is a woman, see Pg. C 4.