

Steam trains to start operation summer '78

The Credit Valley Railway probably won't start operating between Georgetown and Cheltenham for at least another 18 months, Ontario Rail Association (ORA) spokesman Tom Henry said in an interview recently.

When the O.R.A. first received permission from the Canadian Transport Commission in 1975 to take over 7.4 miles of CN track between Georgetown and Cheltenham in 1975, it was hoped the Credit Valley Railway would be operating by 1976.

Earlier this year Henry said the steam excursion trains wouldn't start running until the summer of 1977. Now it appears the summer of 1978 is the earliest time the old trains will be running.

One of the problems holding up start of the railway has been the consulting firm doing a study for the O.R.A. has also been busy studying future rail expansion of GO Transit.

Henry said recently the consultants' report, dealing with every aspect of operation of the steam railway in-

cluding financial and environmental effects, should be ready soon.

He doesn't think the O.R.A. is far from signing a leasing agreement for the line with CN.

"We have had some very fruitful negotiations with CN recently and there is no doubt about it that the signing of a lease agreement will be a big step forward. There are so many other imponderables in setting up a system like this, though, I would have to say we are at least 18 months away from having the railway running," Henry said.

In the meantime Henry and four other O.R.A. officials, including Roger Heed, Georgetown, spent a week recently inspecting nine steam train operations in five eastern United States.

The group visited three steam train operations in New Hampshire, one in Vermont, one in Connecticut, two in New Jersey and two in Pennsylvania.

Henry said all the steam train operations were in general terms the kind the Credit

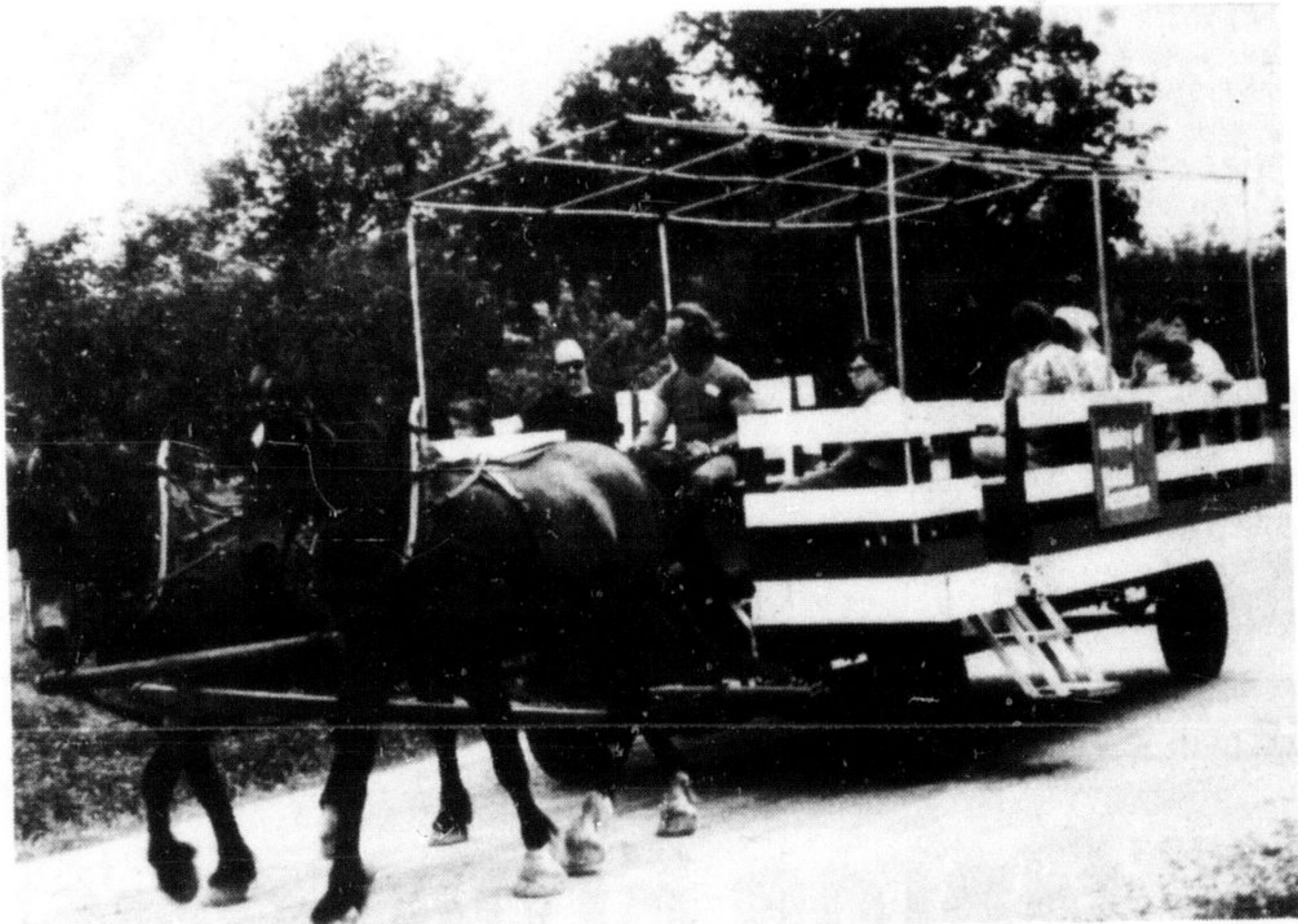
Valley Railway will become.

"There are an awful lot of peculiarities in any operation like this. In Canada we are 'Johnny come latelies' to this kind of thing, compared to the States, so we were down there learning the kind of things we should do and the kind we shouldn't," he explained.

Among the ideas the group picked up were sources of cheap coal across the border and new ways of selling tickets. They also picked up tips on maintenance of tracks, crossings and equipment.

He said the steam train operations in Connecticut were the kind the O.R.A. is aiming for with the Credit Valley Railway in terms of level of service. Henry added the four-and-a-half mile 16-year-old Strasburg, Pennsylvania, steam train "is the ultimate dream. It would be the operating envy of many big railways."

Henry observed the O.R.A.'s level of equipment maintenance is already as high as most of those they saw south of the border.



HORSE DRAWN WAGONS are among the highlights for visitors attending Bronte Creek Provincial Park. This wagon is manned by John McKinnon of Milton. The ride makes it easier to get around and see all of the attractions at the park.

Council briefs

Apply to build Fotomat at mall

During a meeting of Milton Council Tuesday, council:

- Was advised treasurer Don Lougheed had passed an advanced course in municipal accounting in connection with the Municipal Clerks and Treasurers Association.
- Took no action on a motion by the Wellington County Board of Education asking for legislation to control the distribution of hard core pornography by permitting only licenced outlets to sell such literature.
- Referred information concerning fire routes to Fire Chief A. E. Clement. Halton Condominium Corporation forwarded the information.
- Agreed to pay \$135 for an advertisement in the Milton

Junior Hockey Club program. —Was advised of an application by Fotomat Canada Ltd. to develop a Drive-Thu

operation on the parking area at Milton Mall.

- Deferred legal action against N. Seidl Jr. of Lower Base Line West in connection with two violations of the town's zoning by-law.
- Agreed to grant \$1 per registration to Milton Girl's Softball Association.
- Increased capital levies on homes in rural areas to \$900 per home—an increase of \$200.

DEMONSTRATOR

1976 CHEVETTE 2 DR. COUPE

Finished in light red with red cloth interior. Equipped with 4 speed transmission, electric defroster, and AM radio. Lic. KUB 237.

Jack Richardson
CHEVROLET-OLDSMOBILE

Hwy. 25 S. (at Derry Rd.) Milton 878-2393-3812



EVERY ITEM YOU NEED FOR SUMMER HOME IMPROVEMENT TIME

Member of the Milton Downtown Group



ITEM	DAILY RATE
Appliance Dolly	3.00
Belt Sander	5.00
Bolt Cutter	4.00
Drill	3.00
Drill Bit	1.00
Floor Sander	12.00
Fert. Spreader	2.00
Floor Polisher	2.50
Hedge Trimmer	7.00
Jig Saw	4.00
Lawn Roller	2.00
Lawn Mower	6.00
Ladder 24'	3.50
Ladder Step	2.50
Pipe Threader	2.50
Post Driver	1.50
Post Auger	2.00
Pump	7.00
Peck	2.50
Ramsart	5.00
Rug Shampooer	2.50
Rototiller 5 H.P.	16.00
Seyth	3.00
Staple Gun	1.50
Ski Saw	1.50
Sprayer	2.50
Sledge	2.50
Tile Roller	3.00
Vacuum-Wet-Dry	6.00
Vibra Sander	2.50
Wheel Barrow	2.50

Ask for items not listed. Hourly and weekly rates available.

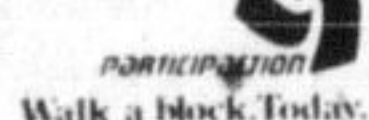
We also cut glass and keys, sharpen saws, knives and scissors.

MILTON DOMINION HARDWARE

227 Main Street

878-2353

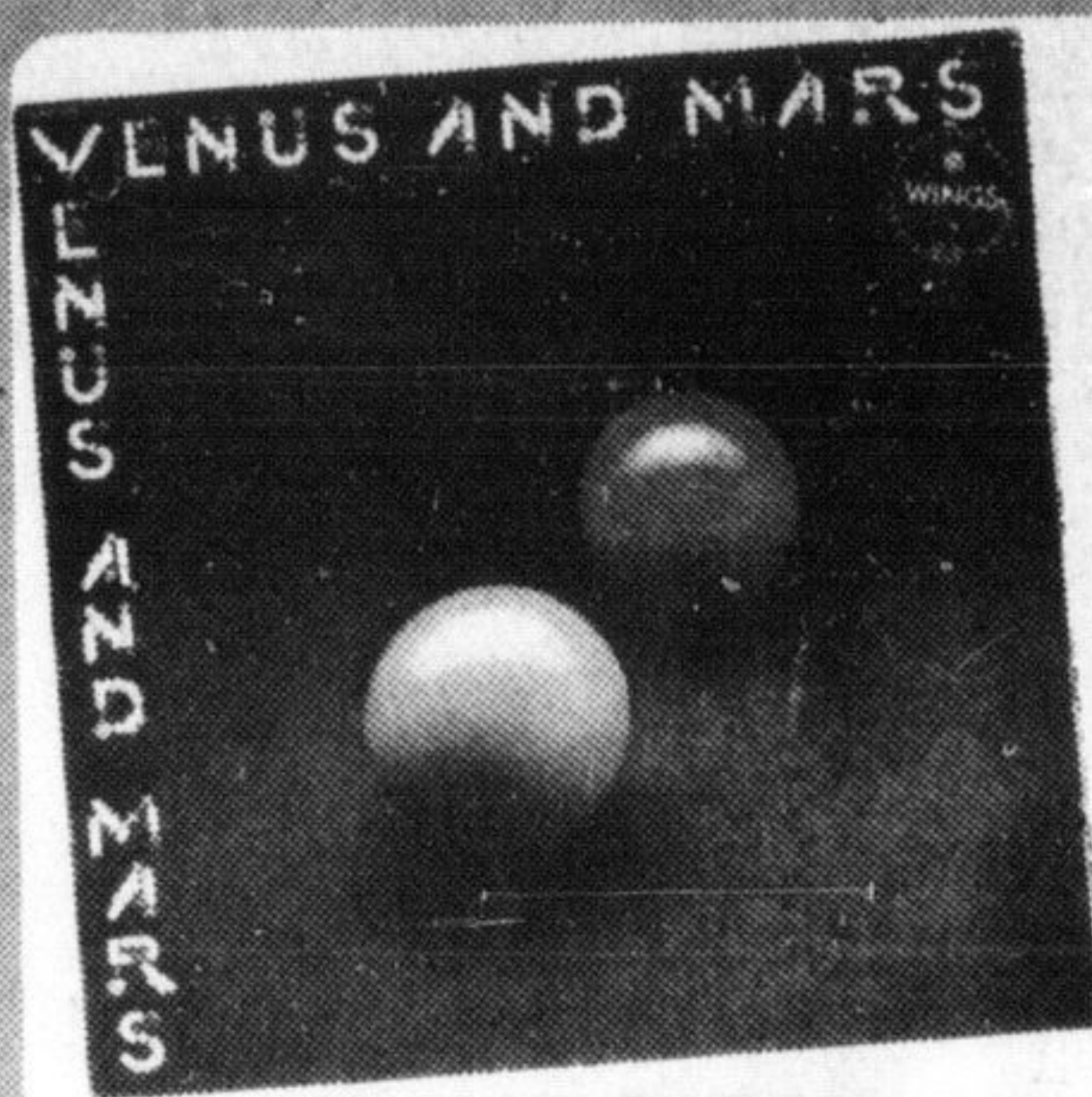
Walk a block a day. — It's the first step.



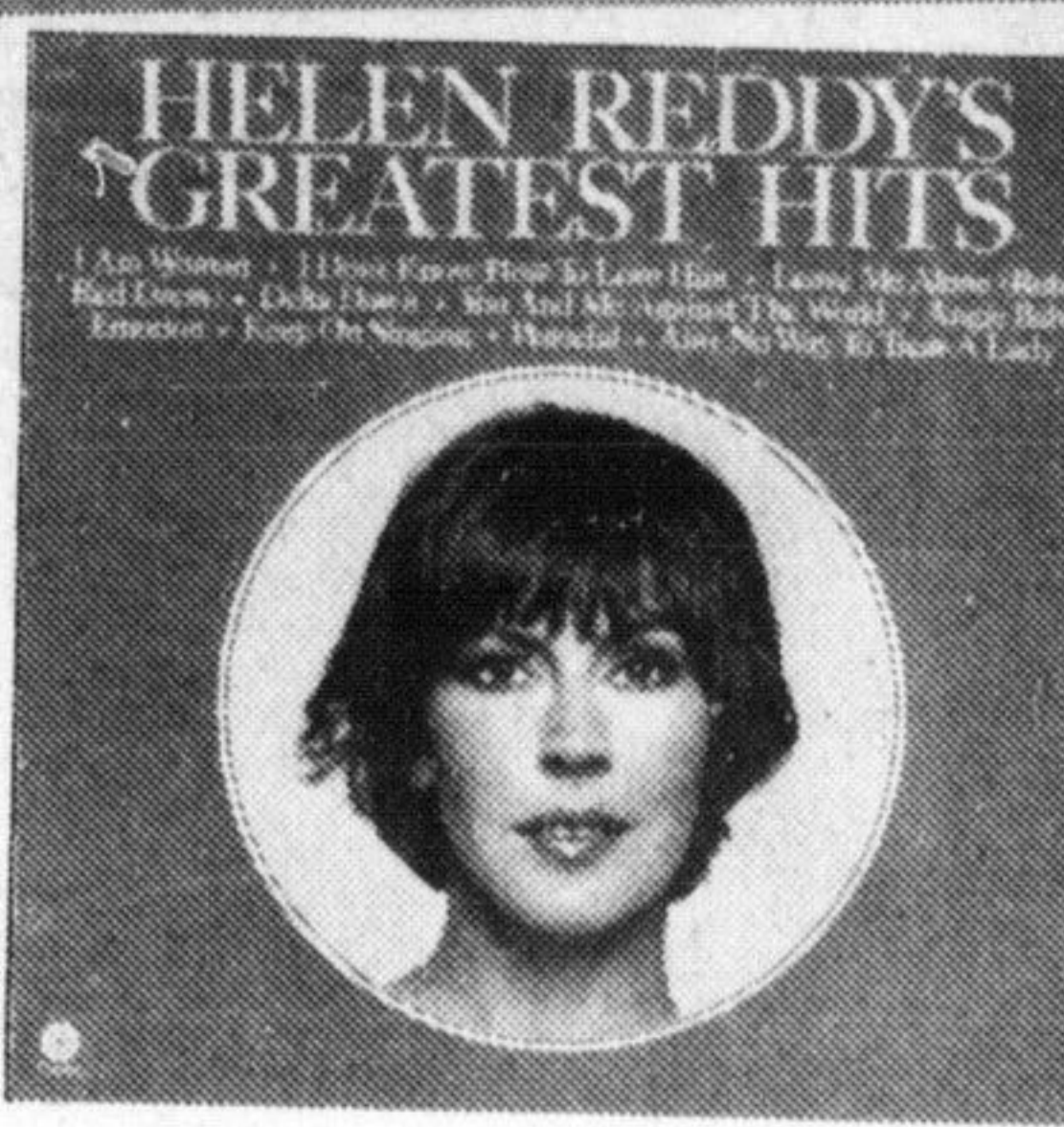
RECORD BONANZA

SALE ENDS SATURDAY, AUGUST 28th

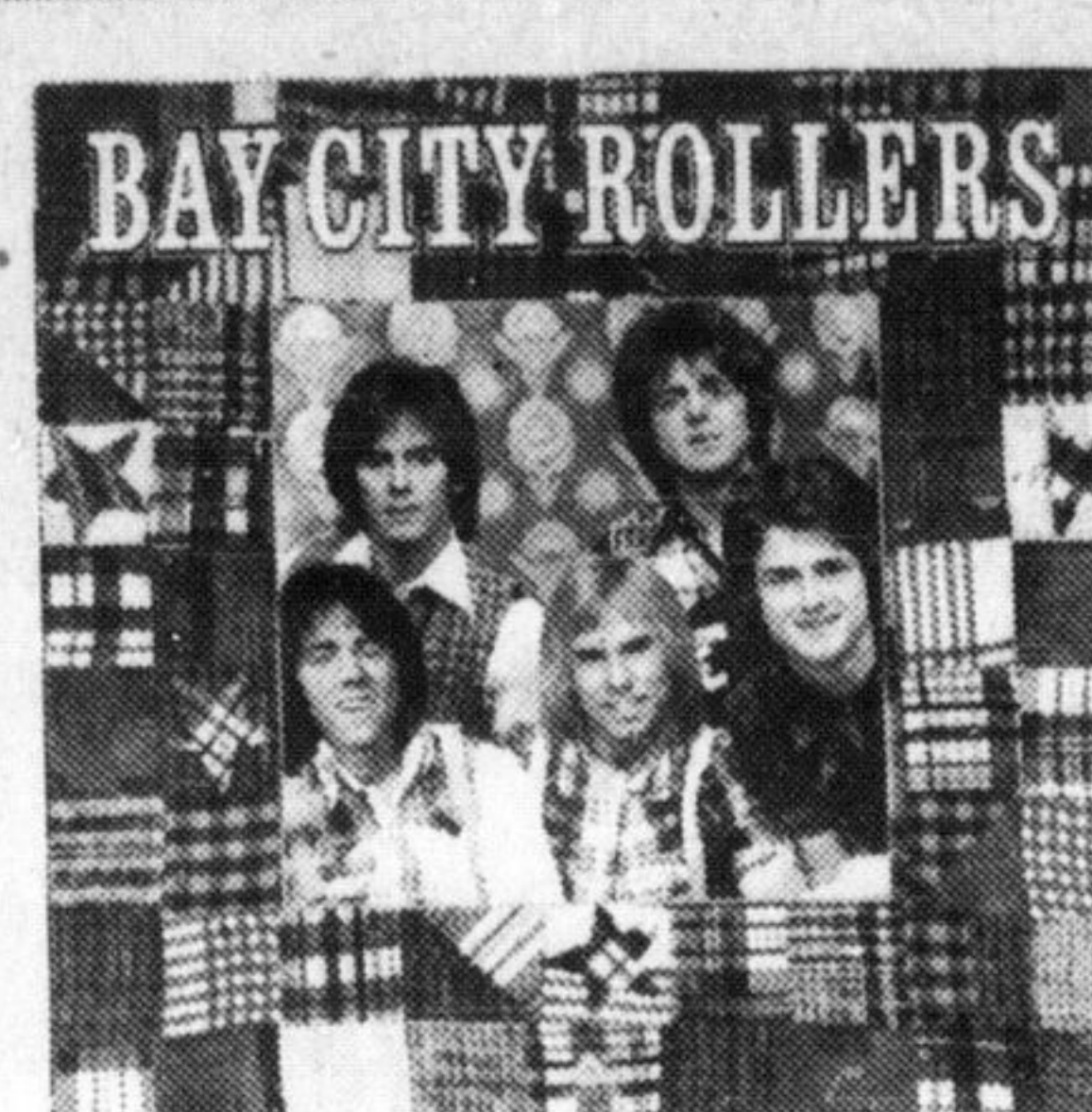
(OR WHILE QUANTITIES LAST)



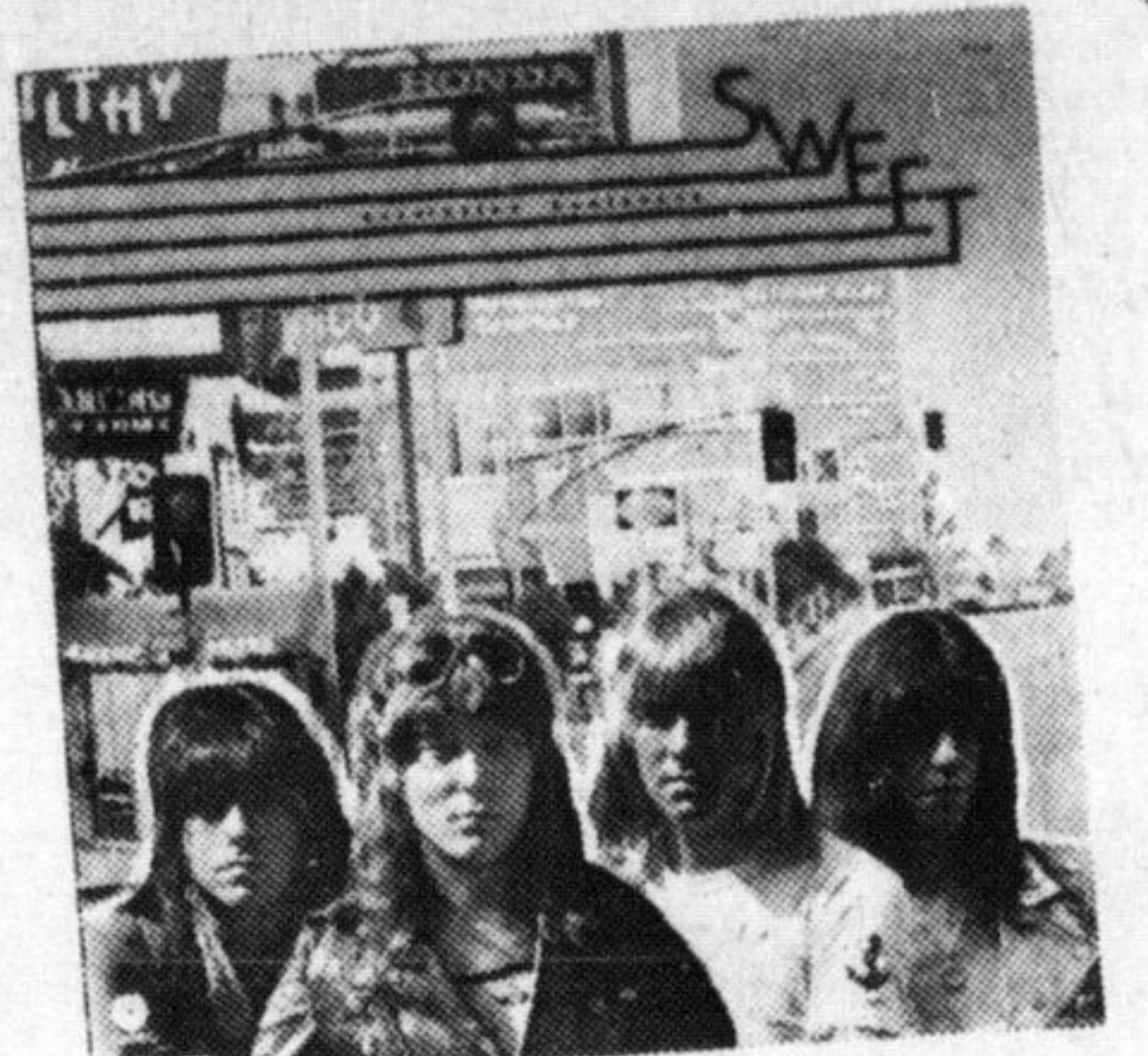
Paul McCartney & Wings
"Venus & Mars"



Helen Reddy
"Greatest Hits"



Bay City Rollers



Sweet
"Desolation Blvd."



KC & The Sunshine Band
Includes: "That's The Way" & Other Hits

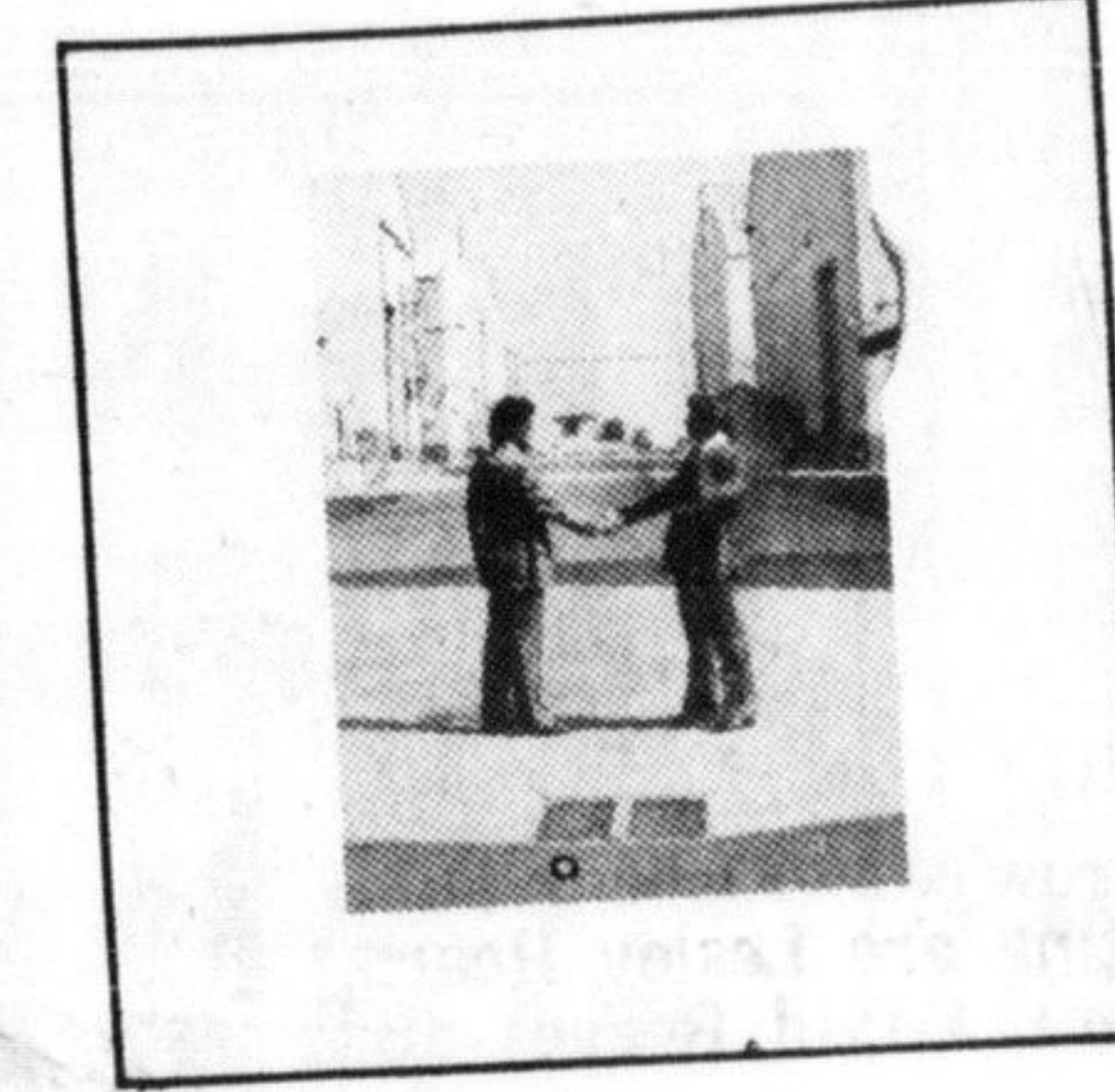
3 98 ea.



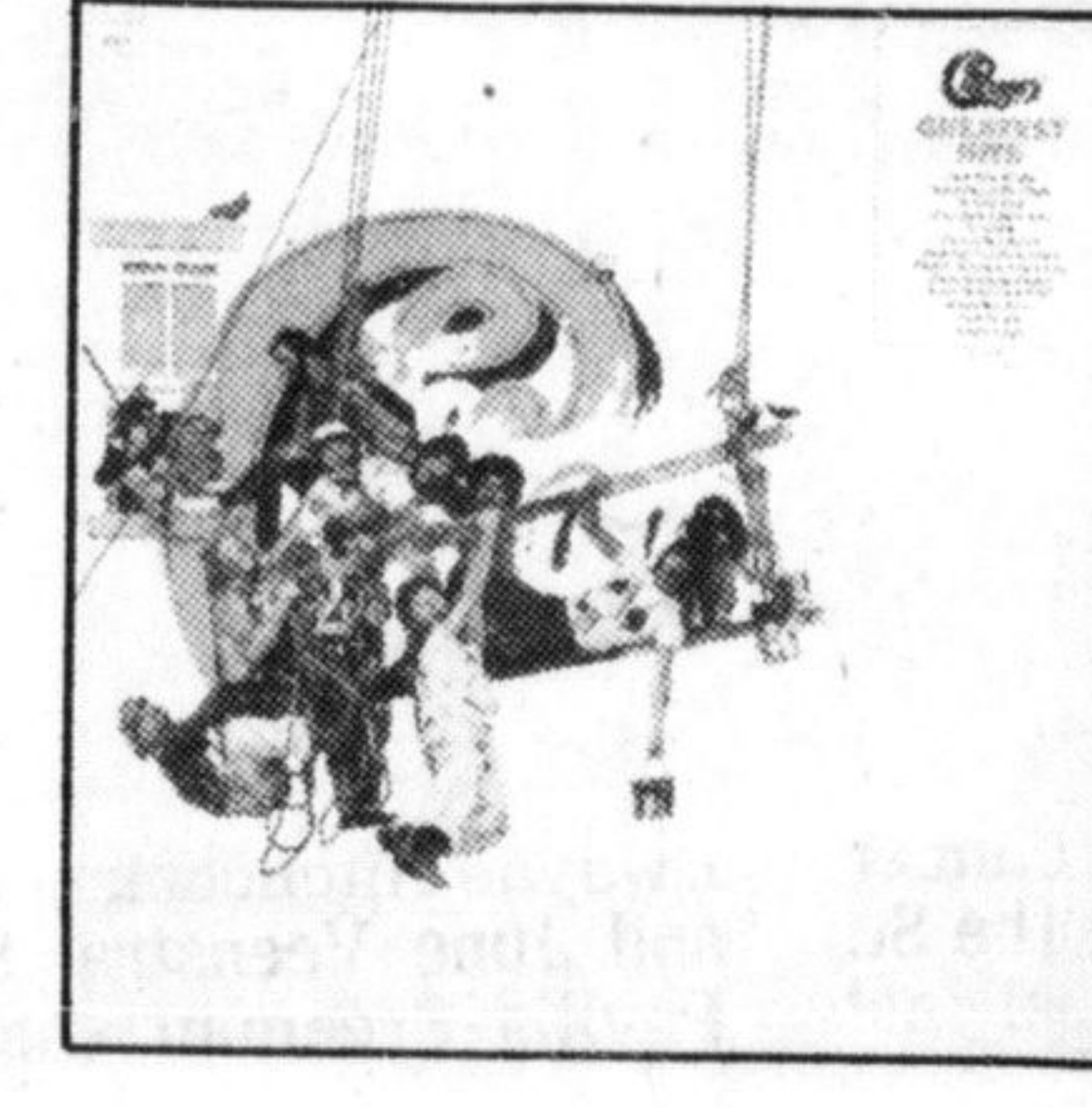
Gary Wright
"The Dream Weaver"



"Band on the Run"
Paul McCartney



Pink Floyd
"Wish You Were Here"



Chicago
"Greatest Hits"

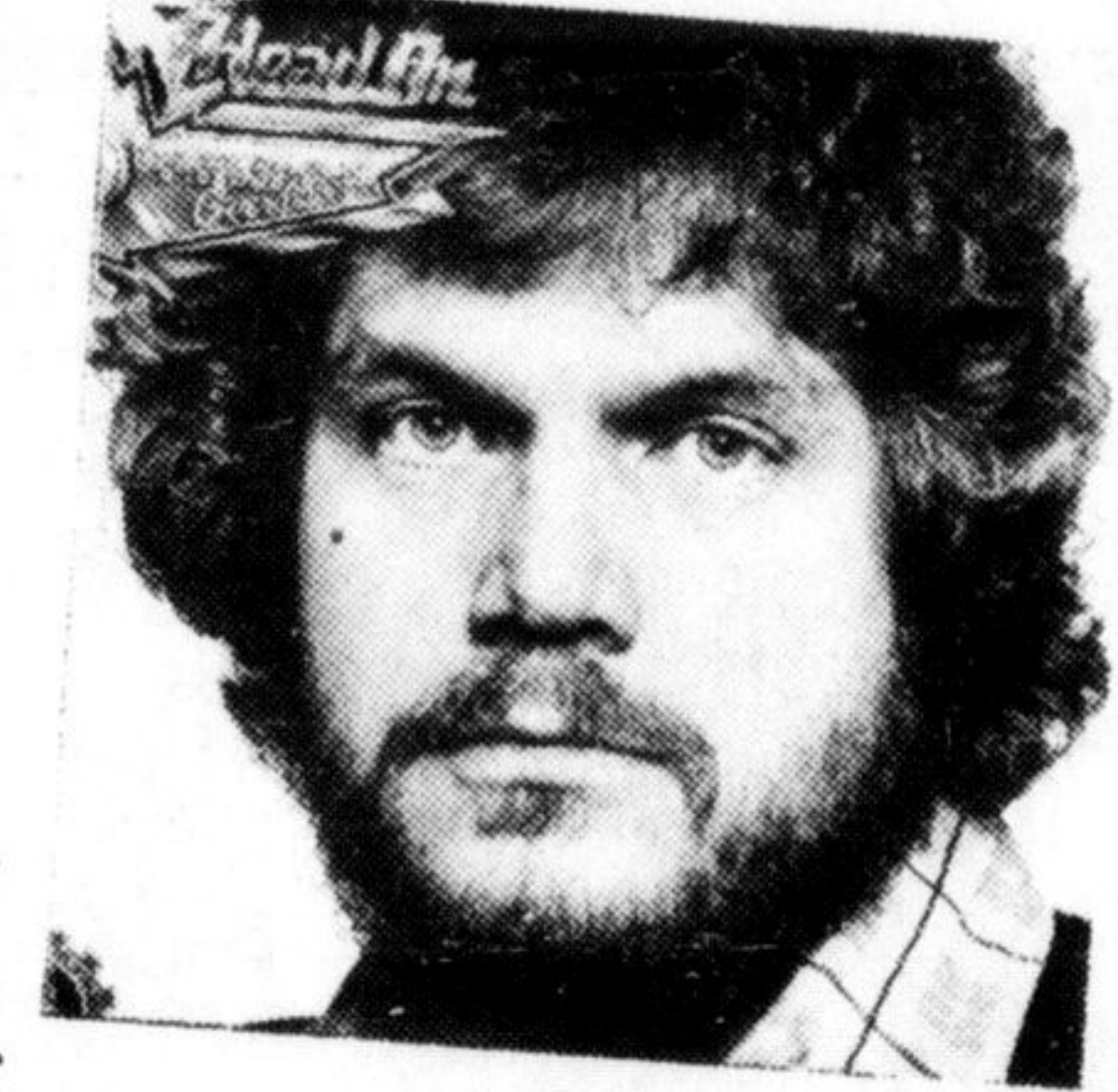


John Denver
"Windsong"



B.T.O.
"Four Wheel Drive"

4 49 ea.



B.T.O.
"Head On"



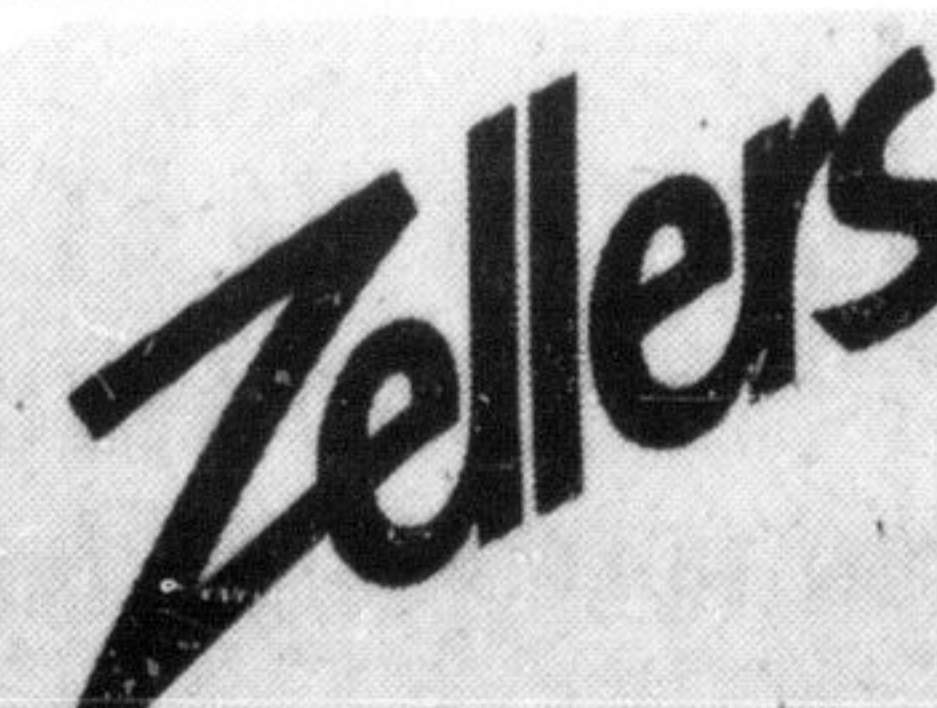
8 Track Tapes 4⁹⁹ 5⁹⁹



NEIL DIAMOND
"Serenade"

LOW LOW PRICE

2⁹⁹



MILTON MALL SHOPPING CENTRE

55 ONTARIO ST. SOUTH, MILTON • 878-8178

GEORGETOWN MARKET
Highway No. 7
Georgetown

CENTENNIAL MALL
227 Voddan Street
Brampton

Westdale Plaza
1131 Dundas St. W.
Mississauga

