

Northern high schools are nearly at capacity

Each of the three northern area high schools is at or near capacity, according to an enrolment report presented to Halton Board of Education Thursday night by Director-designate Em Lavender.

His report shows Acton with an effective capacity of 567 and a population of 632, Georgetown High School with an effective capacity of 1787

and a population of 1866 and Milton District High School with an effective capacity of 1098 and a population of 1128. Lavender's report Thursday did not contain recommendations that would call for building new schools or altering boundaries. He noted he would be coming in with later reports on long range plans for Milton and Acton.

Last a while Lavender said Georgetown will have sufficient accommodation for the next few years until the area south of the west branch of the Credit develops.

Lavender expects the secondary school enrolment in Acton to be 800 or 900 by 1978 and claims the existing facility will not accommodate that many students.

He noted that Milton's rate of growth had dropped substantially but suggested the planned high school scheduled for 1976 would still be needed. Lavender said there were new houses in Milton standing empty seemingly by the hundreds and he was of the opinion that sooner or later they had to be occupied.



FIRST PRIZE float in the Santa Claus Parade Saturday was the entry of the Milton and District Kinsmen depicting Christmas on Sesame Street. Grouped near the tree are Kerry Wood, Lester Wood, Brian Gildea, Barry Tonner chairman of the club's float committee seen receiving the trophy from Mayor A. MacArthur, Paul Lonergan and Neil Preston. In Kin sweaters in front are Carl Williams, Paul Hobbs, Chris Lewin and Warren Williams.

Prize winners

CUB Steen Jensen received the second place award in the float competition from judge Edgar Foster. Other judges were Mayor Anne MacArthur and Arthur Britton. Judging was done in the Agricultural Grounds as the parade wound its way past the grandstand.



MILTON NURSERY SCHOOL claimed third place honors for their float in the Santa Claus Parade Saturday, depicting the Christmas story plus a special fireplace just for Santa and the stockings.

A set of fixed jaw wrenches and two or three with adjustable jaws will handle most kinds of jobs, now that nuts come in standard sizes, St. John Ambulance advises. This standardization has helped safety a lot because having many different sizes of nuts and bolts made for confusion and bother, and that always makes for accidents.

There have not been nearly so many accidents since equipment has become standardized and the tools needed for their repair or adjustment have become fewer. St. John Ambulance notes. If workmen just follow the safety practices they have been taught and use their heads, they won't get hurt.

Development of defects in machinery can be detected in many ways. St. John Ambulance notes in stressing accident prevention. Among these are: sound, change in speed, results produced, vibration, etc.

Presentation for Scouters

Ian Jones, 505 Woodward Ave., Milton presented an important session at the Regional Conference for Scouting on Saturday, Nov. 30 at the Ontario Institute for Studies in Education in Toronto. Mr. Jones, former program supervisor at Canada's largest camp, the Haliburton Scout Reserve and an excellent woodsman, presented the topic "Outdoor Activities and their importance on Youth."

This Conference was designed to provide countless opportunities to share resources, programs, ideas and successes among the over 500 leaders and other adults in attendance. Sessions covered such topics as environmental awareness, camp planning, understanding today's youth, communications(s) and much more.

A.T. MOORE INSURANCE
CAMPBELLVILLE
854-2271

HRCA cautious to region offer

Halton Region Conservation Authority decided at the meeting Thursday night to be non-committal concerning a request by the Region of Halton to share office-building accommodation. Authority member Ken Horwood considered the Region's letter "vague" and suggested HRCA wait until a definite building location is established.

Len Coxe, Halton Hills council member agreed and added, "When they have 50 acres purchased we'll talk to them. I won't go to Zimmerman (one of the four

suggested locations) because the building should be on a main road, somewhere we can get out of in the winter."

A regional building site committee has been involved in finding a permanent location for almost a year now. Milton Councillor Jim Watson is a member of this committee as well as sitting on the Authority. According to Watson the committee is no further ahead in finding a location than it was a year ago.

HRCA is presently renting office space in the Trafalgar

Square Building on Main St. in Milton. The region moved out of the Steeles Ave. County Building in Milton last April to a temporary site at the junction of the Guelph Line and the Queen Elizabeth Highway in Burlington. Halton has a three year lease with an option to extend the lease to five years if necessary.

FABIAN
Fine Furniture
AT FACTORY TO YOU PRICES
MILTON PLAZA

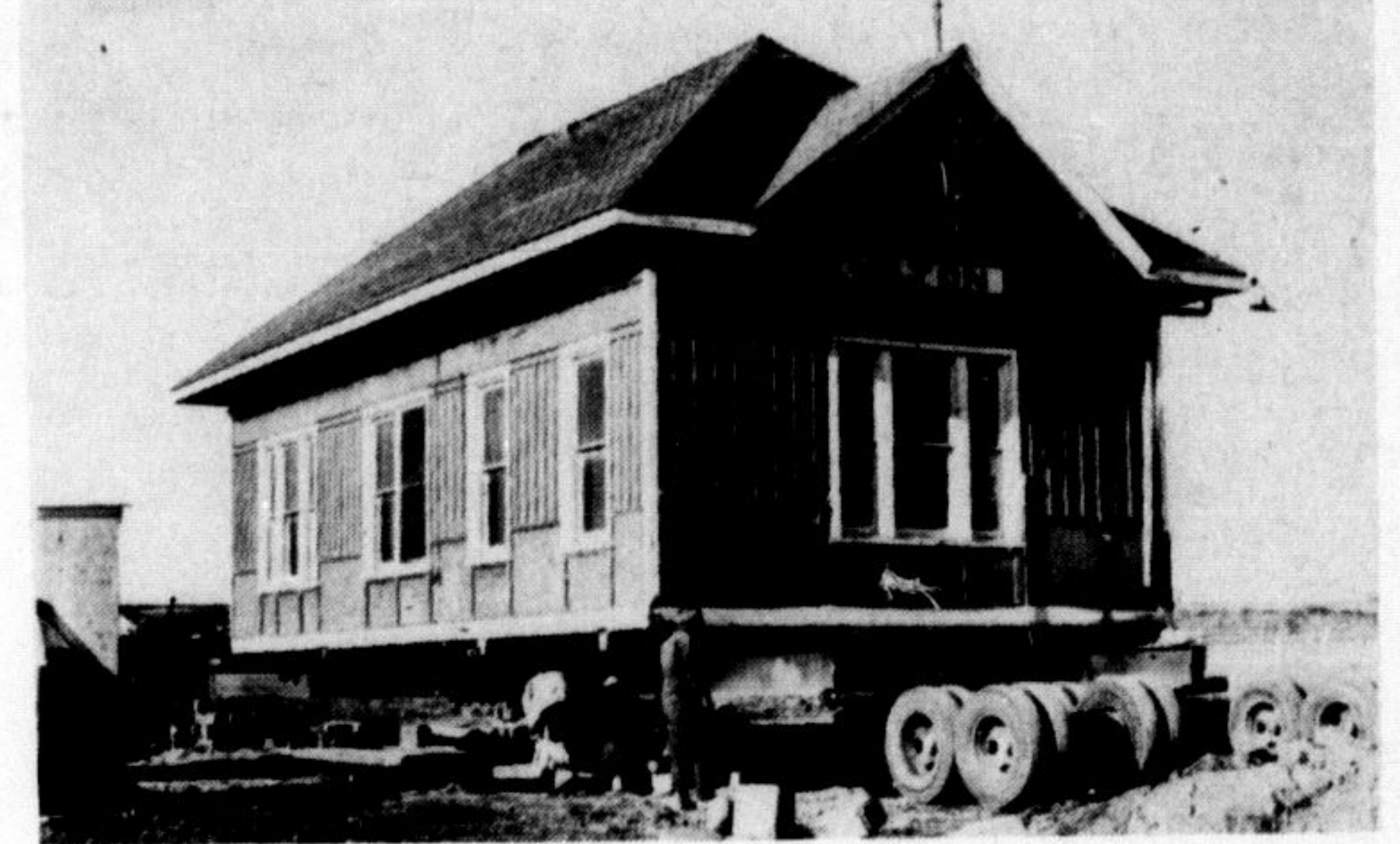
ST. JOHN NEWS
First Aid Us To Aid Others Later

Rent it!
from **DOMINION HARDWARE**
227 Main St., Milton 878-2353

DAILY RATES	
Fert. Spreader	1.50
Lawn roller	2.00
Roto tiller	12.00
Floor sander and edger	9.00
Vibra sander	3.00
Fridge cart	2.00
Skil saw	4.00
Jig saw	3.50
Drills	3.00
Hedge trimmer	6.00
Sump pump	5.00
Staple guns	1.00
Belt cutters	3.50
Post hole digger	1.50
Wheelbarrow	2.50
Lawn mower	6.00
Sewer auger	2.00
Post driver	1.50
Rug shampooer	2.50

Ask for items not listed. Hourly and weekly rates available. We also cut glass and keys, sharpen saws, knives and scissors.

ONE HUNDRED AND TWENTIETH IN A SERIES A Mark of Progress in Milton



Progress often takes its form in preserving the past and Milton Chamber of Commerce has undertaken such a project. Milton's CNR station is now being located on a site in a park where it will find new service as an information centre, Chamber office and meeting room. A \$5,000 donation from John Tamai started it all and the \$25,000 project is now advancing.

For a progressive Insurance Programme at competitive rates contact...

McCuaig INSURANCE LIMITED

208 Main Street E., Milton 878-2894

SOUNDS GREAT!!!

B. E. SOUND
539 MAIN ST. E. — MILTON
878-7295 — 878-7296

This Christmas give a gift for the whole family. A TV or a HI-FI is something both for you and your friends to enjoy for years to come. At B.E. Sound we just had our shipment come in from Santa. Most people don't know that Santa's elves make toys for big kids too, and at prices that dear old Santa can afford. Our service department can take care of all your service needs from maintaining our own equipment to somebody else's. We service all makes and models. We can put up an antenna system as well so Santa can find you better. — Free estimates.

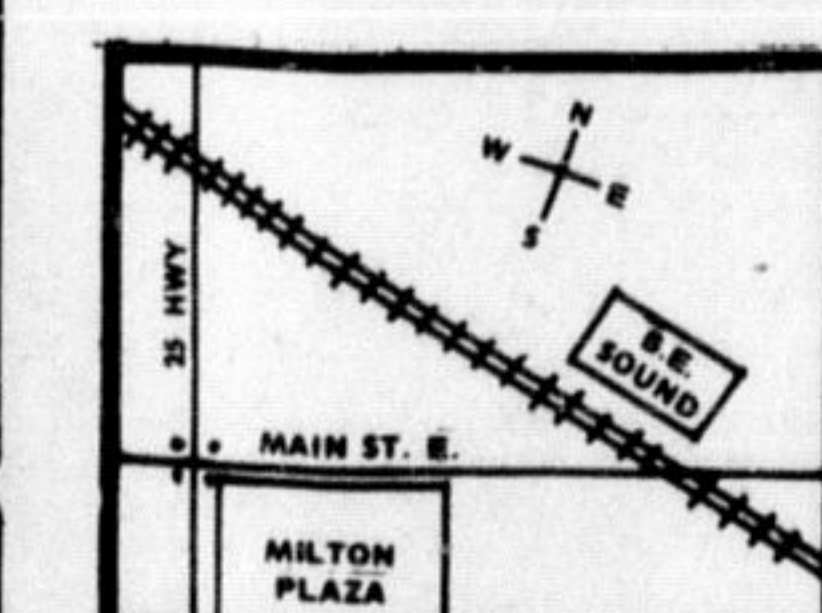
Excellent Quality at Excellent Prices

HI-FI EQUIPMENT

- AKAI • SANSUI • SONY
- SHARP • NIKKO • M.G.A.
- NICAMICHI • BROADMORE
- PRO LINEAR • ULTIMATE



- CAR HI-FI EQUIPMENT
- C. B. EQUIPMENT
- 8 TRACKS
- CASSETTES
- AM/FM RADIOS
- SPEAKERS (Door or Rear Deck Mounted)



B. E. SOUND

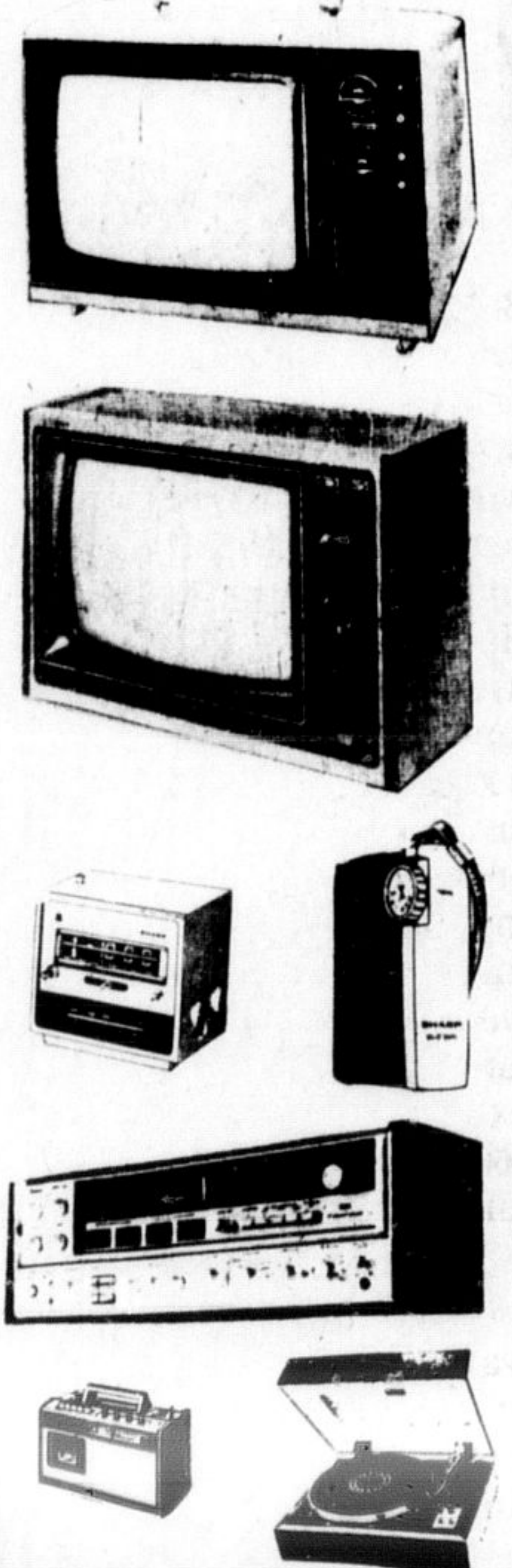
539 MAIN ST. E. — MILTON, ONT.

OPEN 9-7 Monday to Saturday
9-9 Thursday and Friday

OPEN SUNDAYS 12 - 5

TV'S OF QUALITY

Many To Choose From
Picture Sizes From 12" to 20"



PORTABLE EQUIPMENT

- AM/FM RADIOS
- CASSETTE PLAYERS
- CLOCK RADIOS (Alarm)
- MUSICAL EQUIPMENT
GUITARS BANJOS AMPLIFIERS

At B.E. SOUND Our Coffee Pot Is Always On. Come On Down. Just Across The Tracks In Milton. We're Always Glad To See You!

The **Salvation Army**
PICK-UP TRUCK
In Milton & Area
EVERY TUESDAY
877-8522

Fay's ELECTRIC
COMPLETE ELECTRIC SERVICE

- INDUSTRIAL MAINTENANCE
 - ELECTRICAL CONTRACTING
 - ELECTRIC HEATING
 - WATER HEATER RENTALS
- 878-2048
FREE ESTIMATES

WINTER'S INEVITABLE— BE PREPARED!



Beat the RUSH

Get your **SNOW TIRES** on right NOW

Popular sizes like this General G78x15, installed and balanced. ONLY **56⁰⁰** PR.

LARGE SELECTION OF SNOW TIRES
IN STOCK RIGHT NOW

See Garnet's for General and Sieberling snow tires from \$18 to \$32 each. We also carry MICHELIN tires.

Beat the rush
Get 'em on now!

GARNET'S TIRE CENTRE & GAS BAR

32 Bronte St. S. Milton
Phone 878-2465
Open 7 a.m. to 10:30 p.m. 7 days a week