

Santa's here, it must be

## Christmas



HO HO HO chuckled Santa as he and Milt the Snowman greeted well wishers who thronged the route of the Saturday parade. Milt walked the route but Santa was firmly ensconced on a rubber tired, horse drawn sleigh that was equipped for Milton's pre-snowfall days. An estimated 5,000 to 8,000 lined the two mile parade route for the event.



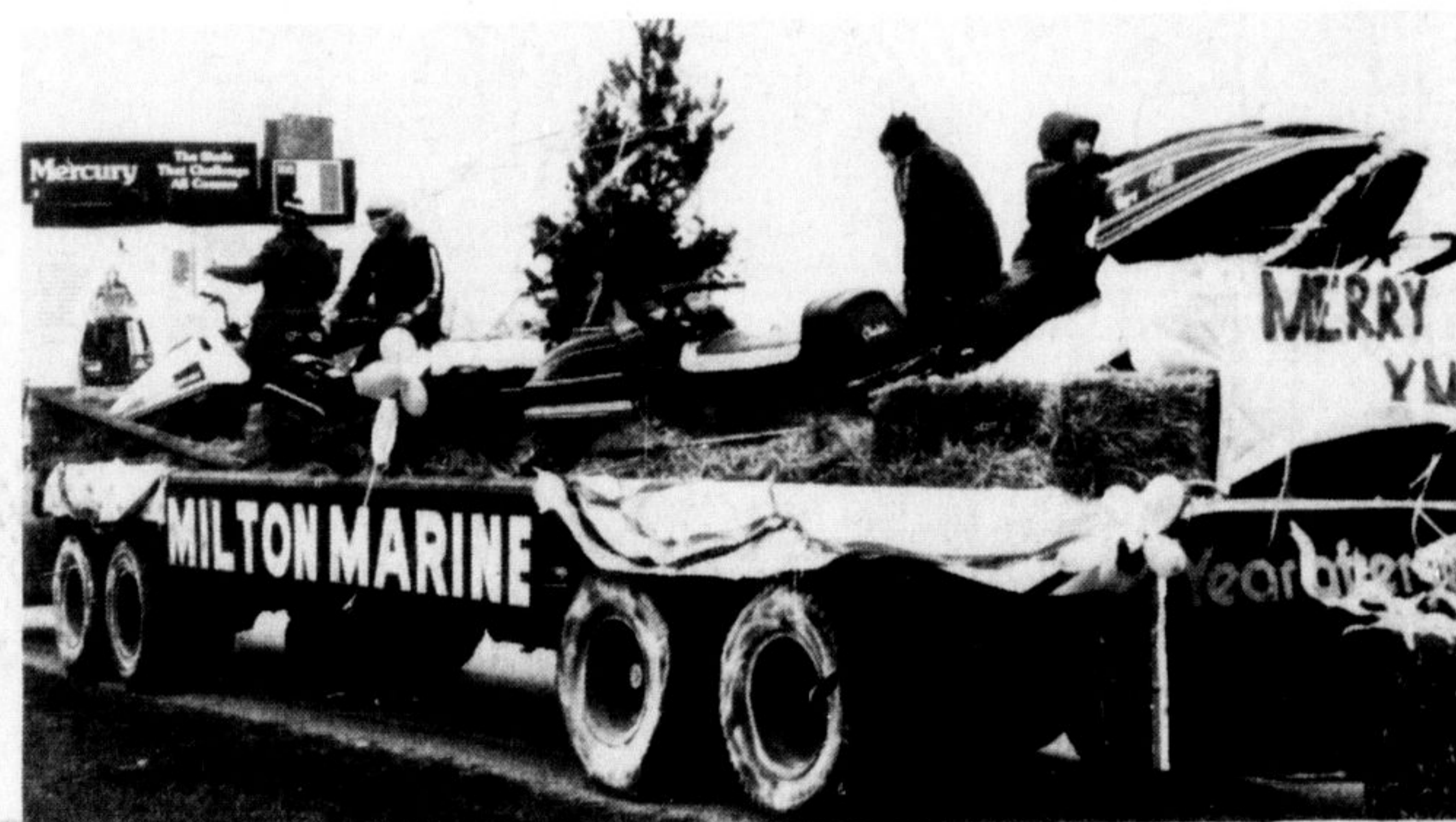
SENATORS' PAGES Drum and Bugle Corps, the junior edition of the Senators from Brampton, walked their second parade of the day to add the zest of music to the arrival of Santa in Milton. Crowds lined much of the route for the 48 entries in the parade that included nearly 800 people.



MILTON DISTRICT High School float included cheerleaders, and band and a replica of the Mustang, the school mascot as well as a larger than life snowman.



DEMONSTRATING their interest in youth, the Upper Burlington Optimist Club portrayed the winter activities they are interested in with hockey and snowmobiling obvious.



SNOWMOBILES were featured on the float of Milton Marine with a prominently displayed greeting for a Merry Christmas season for all the parade spectators.



CLOWNS not only handed out candy, they also did an important clean-up job after the horses in the parade. Here two intent "specialists" are alert for action.



CONSERVATION FEATURES were highlights of the Conservation Authority's horse-drawn float with prominence for the Wildlife Centre at Mountsberg and the Glen Eden ski area at Kelso.



ATTRACTIVE MAJORETTES added zest to the parade and here the Burlington Central Lions Club Majorettes demonstrate their prowess as they march through central Milton. The Milton Parks and Recreation Majorettes were also on parade Saturday.



HOLY ROSARY FOLK CHOIR members provided some Christmas music as they participated in the Santa Claus parade. They were among the nearly 800 people who were in the parade.

Staff photos by Steven Dills



FINISHING TOUCHES were put on the Rotary Club float as Rotarians John Stewart and Ed Loeprich tie down the final details.



SANTA'S WORKSHOP was the theme of the Milton Optimist float. Jeff Goulding, Tom Orr and Paul Boyce are seen as workers in the hive of activity.