

## Donna and Ron Coulson

# Pre-cut pine log home assembled like puzzle



FOUR SEASONS CHALET is the home of Donna and Ron Coulson and their three-year-old son Jody. The pre-cut house was assembled in two

weeks. All the logs were coded and a master plan followed. Ron built the wishing well on the front lawn and has done the landscaping himself.

Donna and Ron Coulson and their three-year-old son Jody live in a Four Seasons Chalet of pine logs on three-quarters of an acre of land on the Guelph Line.

The pre-cut house was assembled by Ron with the help of his family and friends three years ago. It took two weeks from the time of delivery until completion. All the logs were coded and a master plan followed. It is vital in this form of construction that the builder knows where everything fits before starting. The whole process is rather like a giant puzzle that must fit together perfectly. Wiring is done as the pieces are fit into place and the logs drilled into accordingly.

Construction is double tongue and groove with no insulation in the walls, the logs being a natural protection against the elements. The double roof is tongue and groove on beams. Under that are the rafters and six inches of insulation. The outside is finished with a Woodland varnish and inside the house is urathened.

"H" shape  
The house is an "H" shape with the bedrooms down one side, the living and dining rooms on the other and the centre section for the kitchen. Ceilings throughout the house are tongue and groove four inch boards. The logs are eight inches wide. Ceiling beams throughout the house are various sizes.

The back-split design was built on the side of a hill overlooking the 12 Mile Creek. A large redwood-stained cedar

sun deck was added across the back of the house last summer. Entrance to the deck is from the kitchen and the wide sliding doors of the dining room.

Below the deck on ground level a patio effect is created with entrance from the family room and utility room. Ron, a maintenance supervisor with the Halton Region Conservation Authority, with an obvious talent for landscape gardening, has built a stone fountain in one corner over various levels into a pool below. The attractive arrangement is planted with flowers and greenery started in Ron's home nursery in the basement.

Designs furniture  
Ron's talents also include furniture design and construction. The sun deck is furnished with large chunky chairs, benches and a table finished in a redwood stain. Throughout the house pieces of his practical and beautifully-finished furniture are used to advantage.

The Coulsons have proved that this woodsy-type home needn't dictate style of furniture or decor. They have combined Ron's solid-style furniture with family antiques. The master bedroom is Spanish and the living and dining rooms Colonial.

Color variety  
A wide variety of colors are tastefully applied throughout. There's orange in the master bedroom, deep pink in the bathroom, and red in the family room. Cushion flooring is used in the bathroom,

front hall, kitchen and Jody's room. The rest of the house is carpeted, with fern green in the living and dining rooms.

The living and dining rooms are divided by a complete wall of brick. There is a fireplace opening on the living room side with a raised hearth and flush front. Donna has used the brick background to display some unusual works of art. The newspaper account of her grandparents' wedding over 60 years ago is mounted as decoupage on a piece of barn board. It was the Lowville wedding of Walter Hadfield and May Armstrong. The hearth displays Ron's great grandfather's butter press and scoop. He was Walter Milroy of Galt.

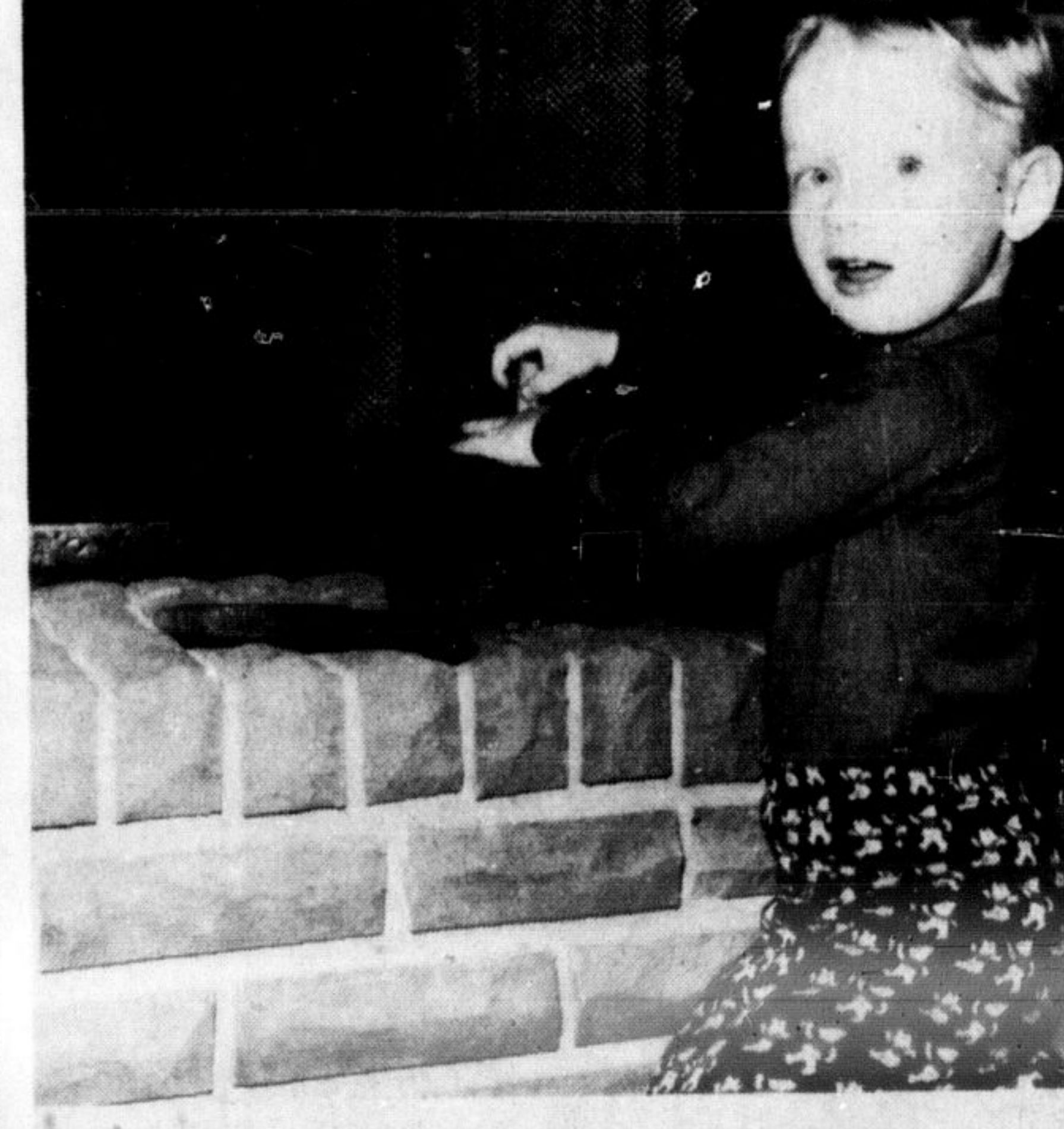
Past memories  
The room is also furnished in memories of the past. Ron's grandmother's rocking chair, a wedding present and nearly 100 years old sits next to his great-grandmother's wash stand. An old space heater is used as a fern stand and a covered milk can is decorated in decoupage to make it an interesting conversation piece.

The dining room is just as well endowed with antiques. Donna's great-grandmother Armstrong, who used to live beyond the Lowville Dam, would be pleased if she could see the care given her glassed china cabinet. Donna and Ron have stripped it and put a finish of paste wax on the natural wood. It now proudly displays lovely old glass and china, most of which has been in the family for years.

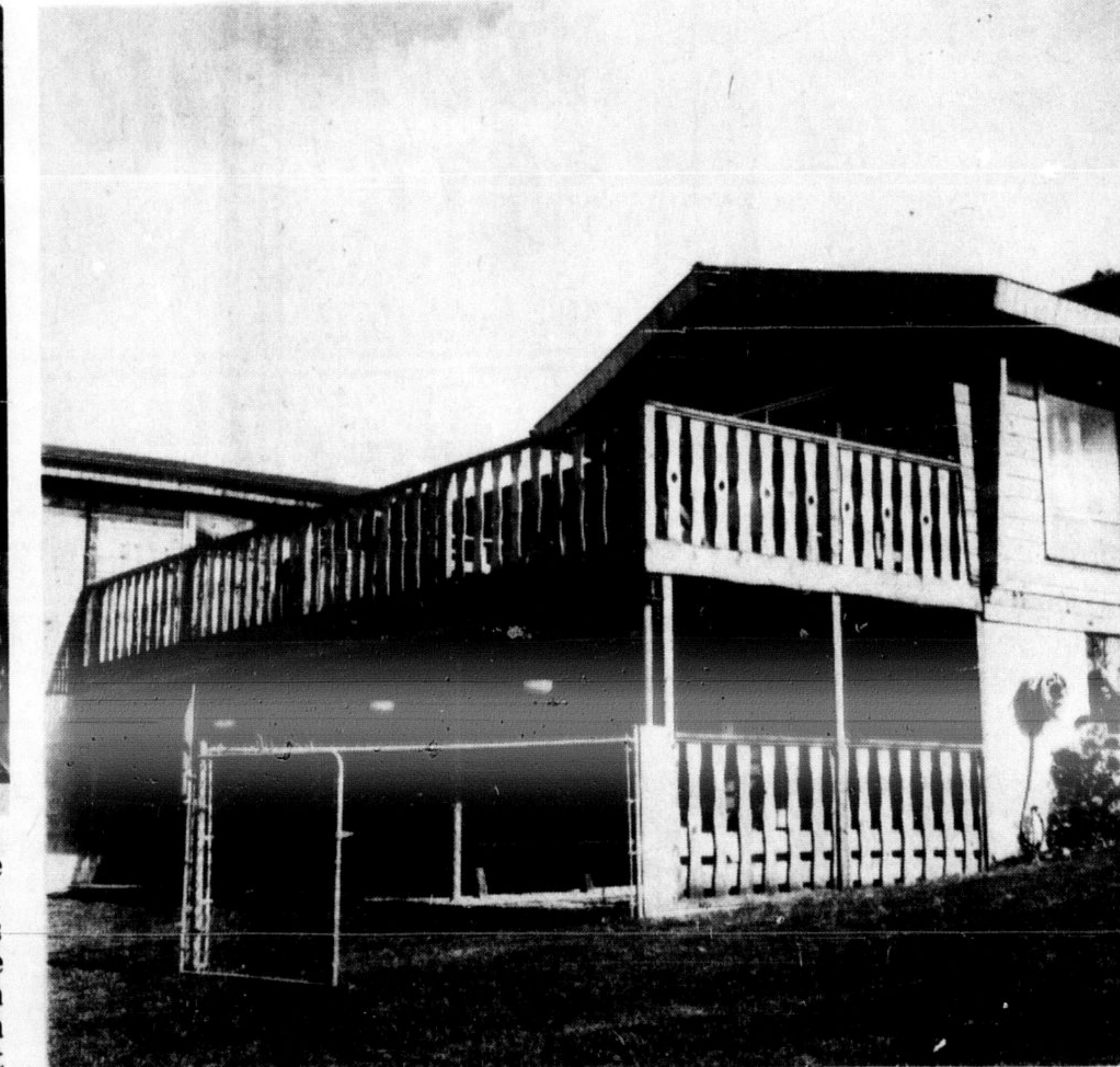
**42nd**  
*in a series on homes of distinction in Halton*  
by Joyce Beaton



DONNA AND JODY sit on the hearth of the brick wall fireplace. Above them is a decoupage account of her grandparent's wedding of 60 years ago. To the left is a covered and decorated milk can.



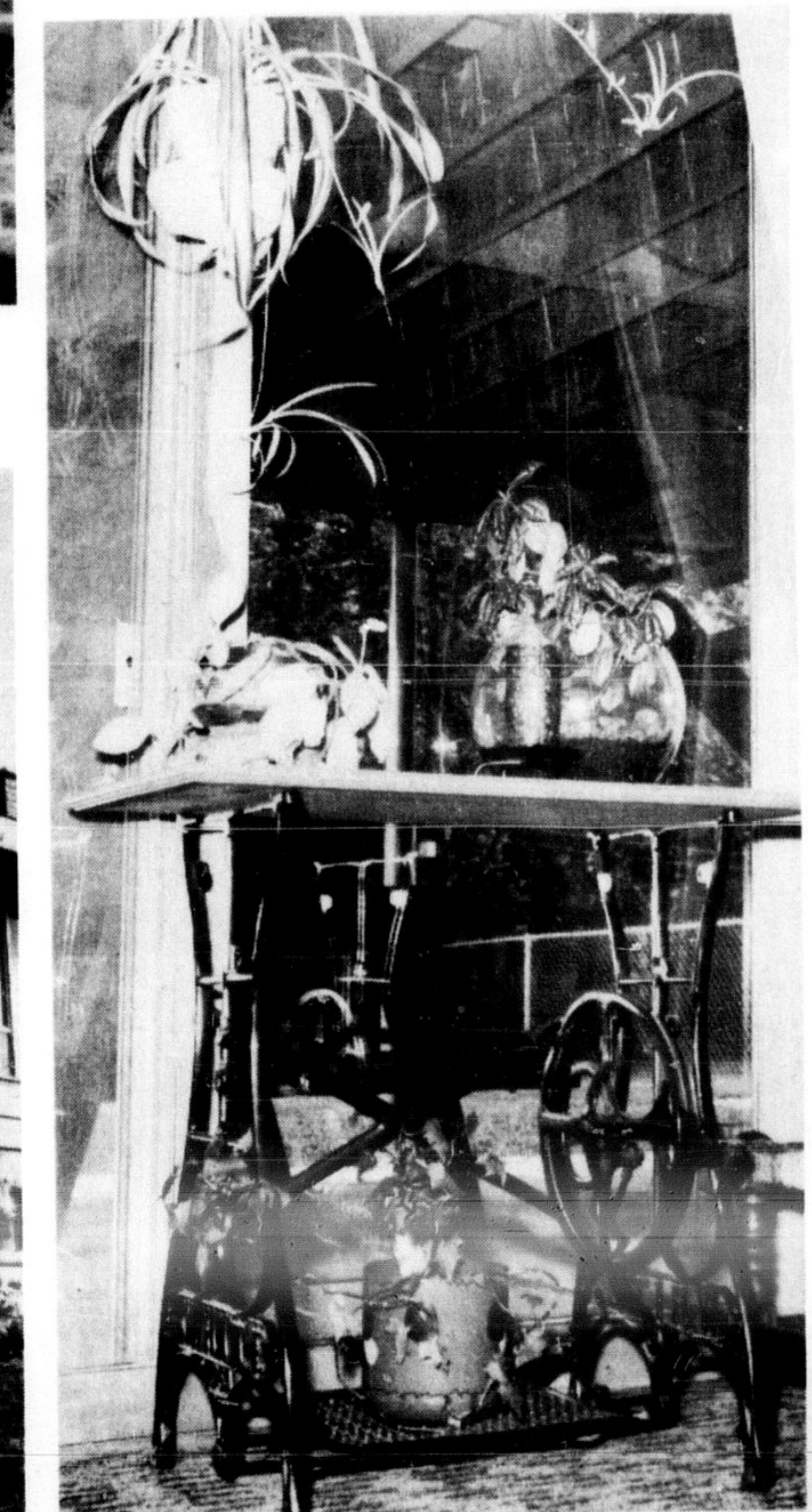
COULSON FAMILY have proven a pre-cut house does not necessarily dictate mode of decor. Above left, Donna shows some antique glass displayed in an heirloom china cabinet she refinished. Below left Ron lets Jody help him in his basement nursery. Above right, Jody sits on a combination bench and toy box in his room. It was built by Ron. Below right, he gets a feel of the past in the butter press and scoop once belonging to his great-great-grandfather Walter Milroy of Galt.



CEDAR REDWOOD sun deck was added across the back of the house last summer. Entrance to the deck is from the kitchen and the wide sliding doors of the dining room. The house is a back-split design.



JODY sits in the front hall on the bench built by his father. The doorway leads to the hallway of the bedroom area.



FAMILY ROOM is thoughtfully furnished with an old treadle sewing machine used as a planter, a reproduction of a milking stool and a Mexican woven-seated stool. The sliding doors lead to the patio under the redwood deck.

ily room. A second fireplace downstairs has been made of local quarry stone. The room is thoughtfully furnished with an old treadle sewing machine used as a planter, a reproduction of a milking stool and a Mexican woven-seated stool.

On this ground level are a large carpentry workshop, the fluorescent-lit garden area, and a second bathroom. The house is heated by hot water.