

# A Wilderness Tour

A tour combining the beauty of Algoma Central Railway's renowned Canyon Country with a look at the flat lands of Ontario's great Clay Belt region is a revealing look at a section of this vast province.

The flat lands, a combination of level and coniferous forest, the home of the lordly moose, and great inland lakes teeming with pike and pickerel, are in marked contrast to the rugged and mountainous Canyon Country.

Destination is Hearst, 300 miles north of the starting point at Sault Ste. Marie. It's a thriving town of 4,000 engaged primarily in lumbering and related industry. The town itself is almost frontier-like in appearance, but at the same time has accommodations for over night stays.

For railway buffs the trip around lake and mountain, over gorges and into river valleys, the Algoma Central winds its way.

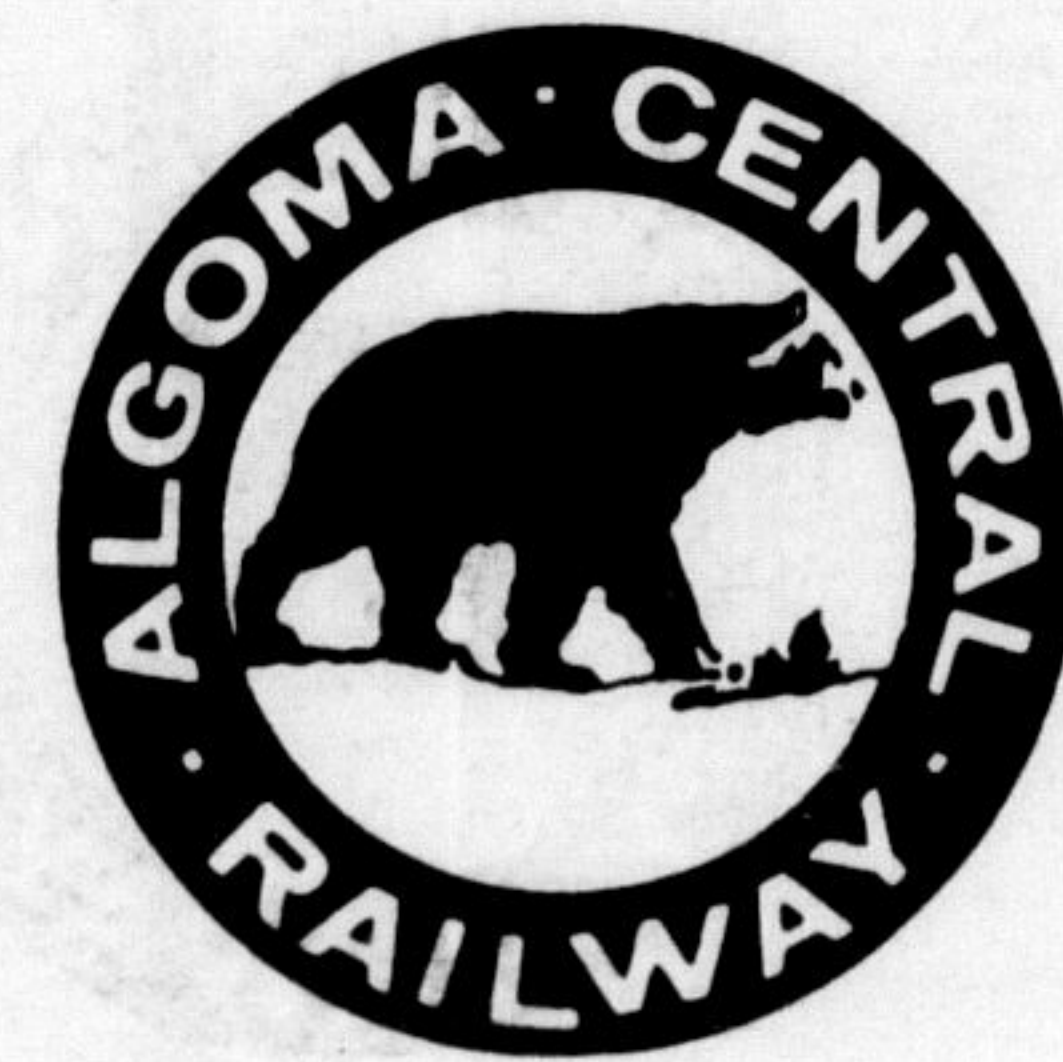
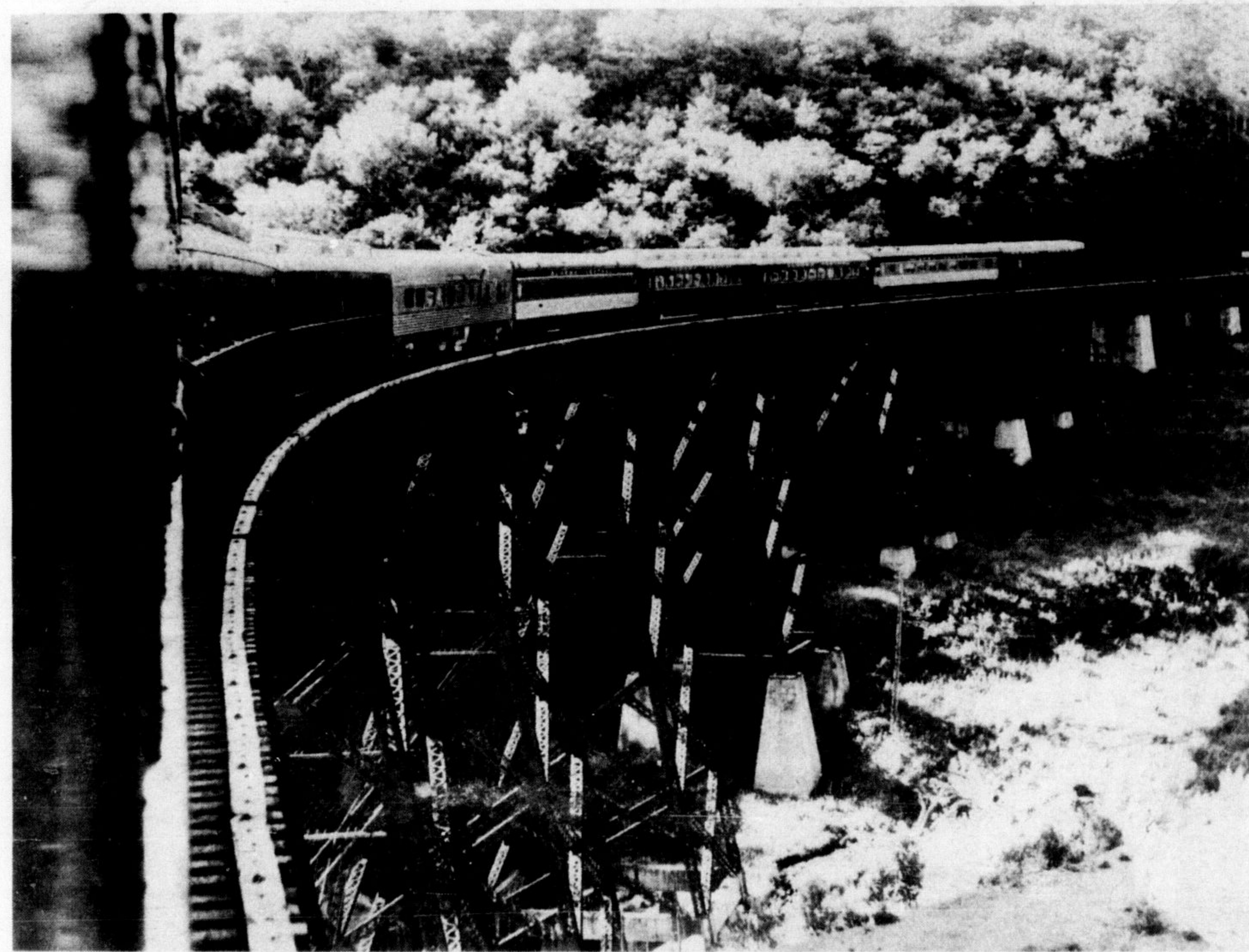
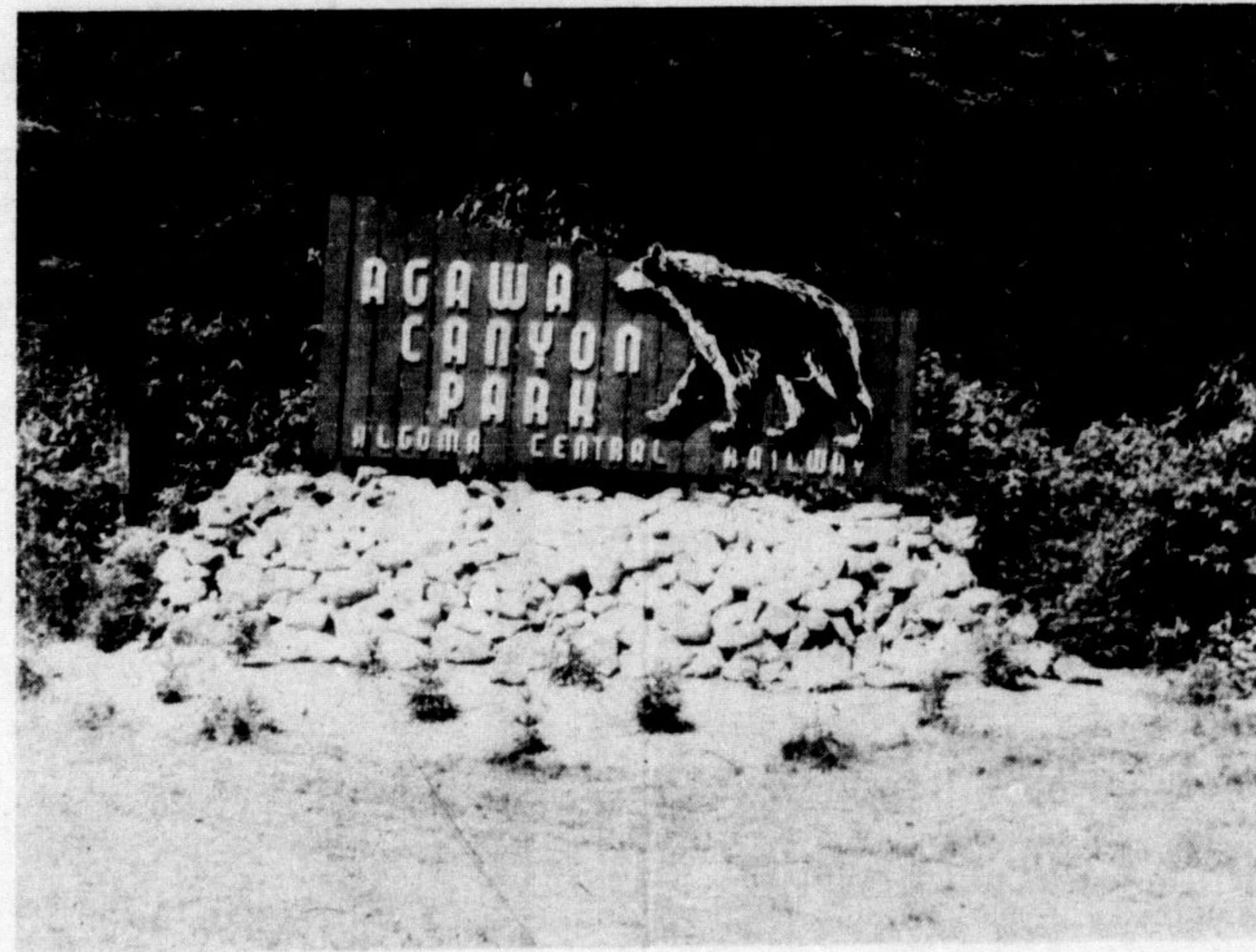


Photo story  
by  
STEVEN DILLS

