

New company makes chip machine

The newest industry in Georgetown is manufacturing the newest machine in the vending machine business—a machine that cooks and dispenses hot french fries, at the touch of a button, and the intake of 30 cents.

It is the latest of other machines manufactured by Nadalin and Knudson Manufacturing Inc., who began operations in a section of the former E. W. Bliss plant on Guelph Street at the beginning of the year.

The patented french fry machine, the first of its kind ever made, is being manufactured here for Chip Vending Services of Ottawa, whose general manager is Joe Poirier, former defensive back for Ottawa Roughriders.

Mr. Knudson said the initial order for his plant amounted to \$100,000 and predicted production of 50 units per day by next year.

To one of the partners, Mr. Knudson it is like coming home to be back in the E. W. Bliss plant, since he was managing director of the plant for the ten years it operated here. When the American-owned company known later as Eagle-Signal and still later as Gulf-Western, Mr. Knudson elected to stay in Canada, after 26 years with the company, 16 in United States and 10 here.

The other partner, Lou Nadalin, is well known in the Milton area, where he owns and operates Nadalin Electric Co.

The french fry machine does not announce its presence by the familiar smell of hot fat. A special catalytic unit, made by Oxy-Catalyst of Westchester, Penn., burns off the fumes so the machine can be used inside without venting.

Nadalin and Knudson are not limited to this machine. They also have manufacturing and distribution rights on the world market for a hot sandwich and six inch pizza machine. They recently purchased Universal Vendors Inc. of Philadelphia, and will make candy, cigarette, cigar, and pan-tylose coin operated vending machines. Other products

can also be sold in these machines. Another of their products is a coffee machine which they manufacture for Compact Industries in Mississauga.

Mr. Knudson says the growth potential of the plant is enormous, since they are in the process of buying Mayville Vendors of Mayville, Wisconsin. They are now waiting government approval to bring the tooling into Canada.

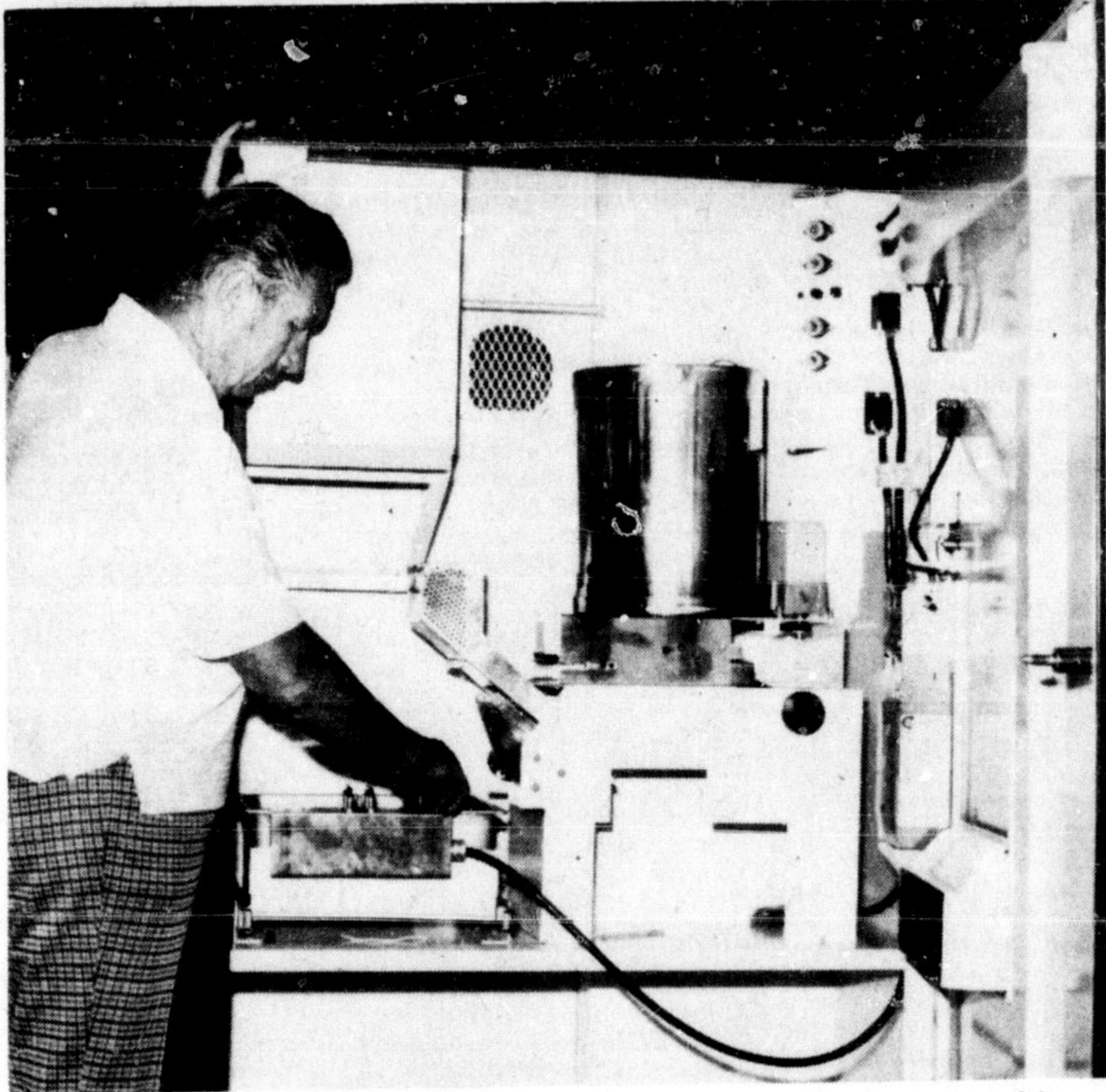
This machine will add hot canned food such as beans, soup, chili and ravioli, while another Mayville product, will dispense cold canned drinks and milk in cartons. Production of this equipment is expected to start this fall.

A magazine vending machine is another product in their line. This one offers a selection of 15 magazines, and cuts pilfering loss to zero. Airports, stations, hotels, resorts and supermarkets will soon sport the locally made machine, made and marketed here for Magazine Vending of California.

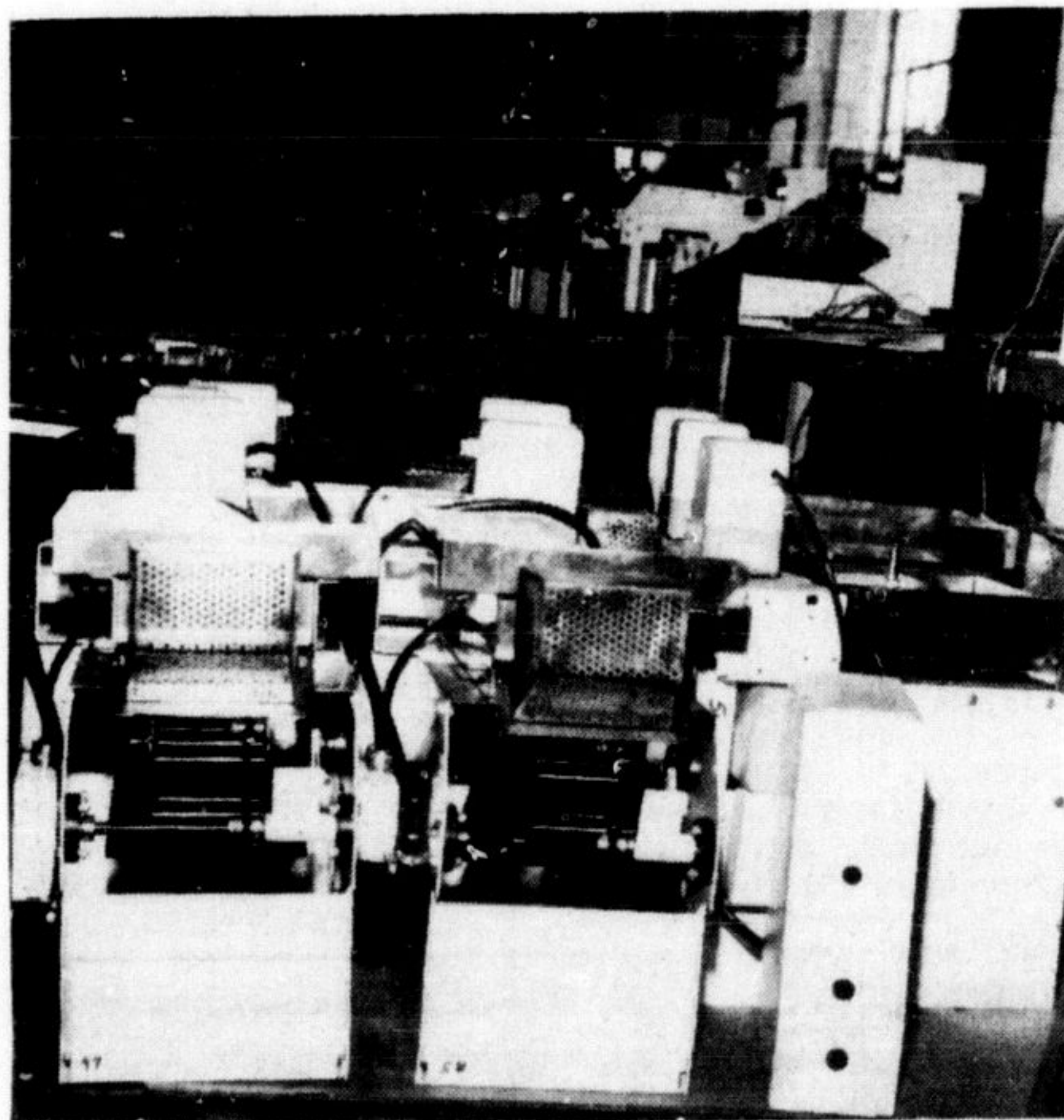
The new company exports 90 percent of its products to United States, and has already shipped a quarter of a million dollars worth of business this year.

Mr. Knudson said additional staff will be needed to assemble the machines. The sheet metal fabrication will be done by sub-contractors.

Mr. Knudson and Mr. Nadalin are Milton residents.



DON KNUDSON, of Nadalin and Knudson, shows the inner workings of the french fries machine.



THE COIN mechanism, for the vending machines, are stocked ready to be installed at the newest industry in town, Nadalin and Knudson Mfg. Inc.



SOME OF THE OTHER machines manufactured at Nadalin and Knudson, including a candy, cigar and cigarette machine are examined by secretary Sylvia Wolfenberg and Don Knudson of Nadalin and Knudson Manufacturing Inc.

Ebenezer

No services next Sunday

There will be no service the last two Sundays in August, while Rev. and Mrs. Russel Finley are on vacation.

Membership classes for those wishing to join the church, will start the first Friday in September.

Holly Ann Johnson, daughter of Joyce and Claude Johnson; and Daniel Henry Bonnell, son of Susan and Jim Bonnell, were baptized.

Mr. Finley's sermon was about Peter. The way Jesus changed Peter's very nature, tells us it doesn't matter what kind of personality you have, Jesus can change you, so that everything will work out.

In Bible times, it was quite conceivable that a person could be born again, as a different person, as when one of the disciples said that Jesus was Elisha, or one of the prophets. Peter's answer came as a flash of insight

from heaven, "You are the Christ, (the eternal now.)" Jesus said to Simon, "You are Petros." When we think of heaven, we shouldn't think of a different place, it is part of "the eternal now." If you believe intuitively, no matter where you are, or what happens, that Christ is part of your breathing, when you are alone, or in pain, you can feel the eternal now within you.

When Peter followed afar off at Jesus' trial, Jesus gave him one look, forgiving, restoring, healing and regenerating, and Peter went out and cried. After the resurrection, Jesus would include Peter especially along with the others. Peter's sermon at Pentecost made 3,000 converts. He was the first to confess that Jesus was the son of the living God. Jesus is eternally with you now, as close as the air.

Gold Rush days close playground

Victoria Park and the arena will be taken over by gold panners, can-can girls and other rough tough characters from the old Yukon tonight—when the Milton playgrounds—present the summer's grand finale—Gold Rush Days.

Parents, brothers, sisters and assorted friends and relations are invited to Victoria Park at 6.00 this evening for the pageant parade, followed by Main Street Canada in the arena.

The main street of a gold rush town will be recreated where you can tie your horse up to a hitching post and go to the bank and buy tickets to any one of a number of things. You may want to bob for apples in the general store, get a whipped cream shave at the barber shop, or watch

Diamond Lil and the dancers while you sip your cactus juice in the saloon.

Tomorrow and Friday will be the last days of playground this summer. Two of the groups will be visiting the new Metro Zoo opening and on Friday morning everyone will finish off with a playday-barbecue at their playground.

DETERMINED LOSERS
Although the Versailles treaty of World War I prohibited Germany from producing powered airplanes, it did not completely frustrate the defeated country's interest in aviation. German engineers soon invented the first real sail-plane. This craft, which made sensational flights in 1922, was called the "Vampire".

HELD OVER FOR SECOND BIG WEEK!

It was the Fall of '54

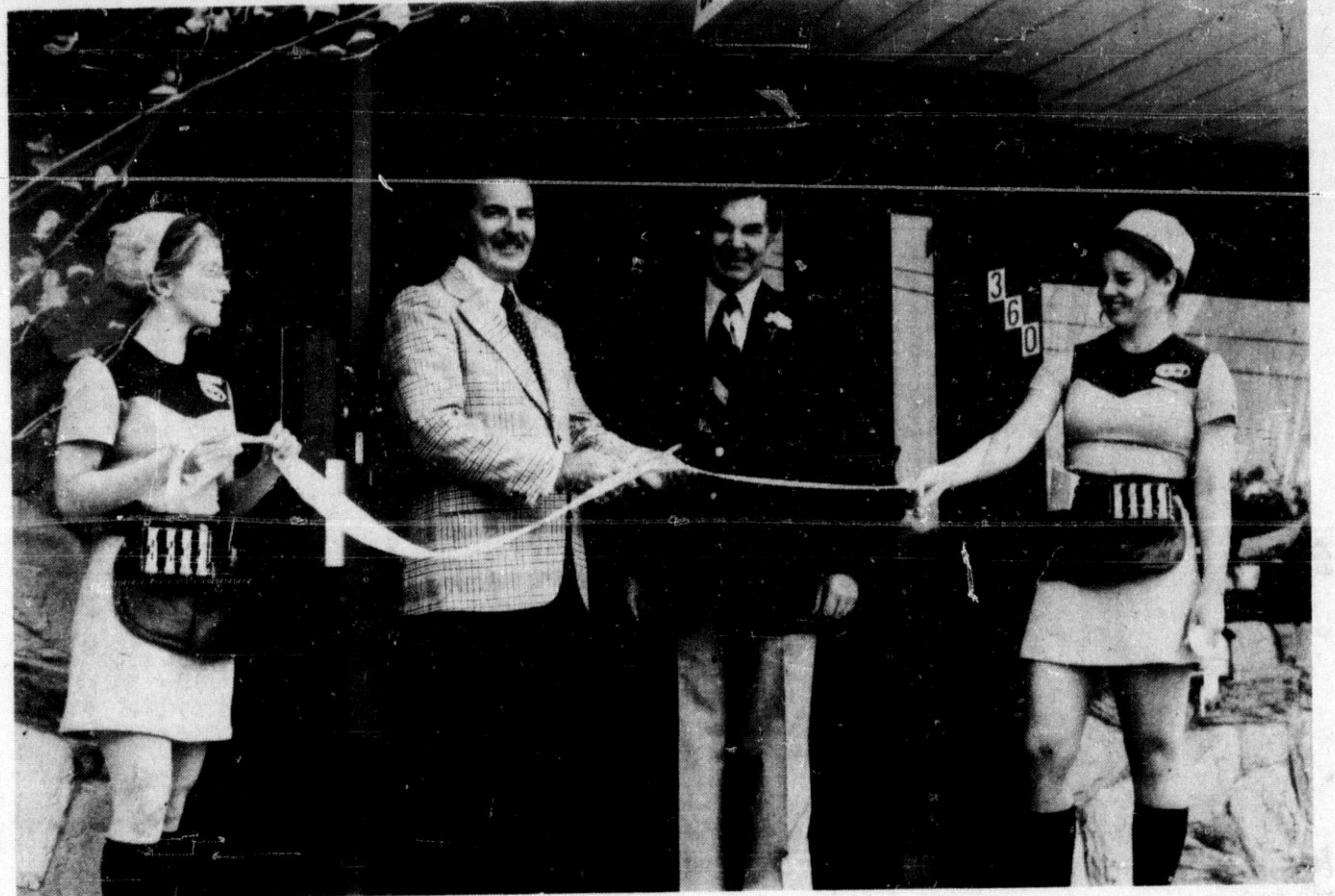
a time when laughing was easy.



And laugh they did, until they crossed the...

Samuel Z. Arkoff presents a Max Baer production starring Alan Vint · Cheryl Waters · Geoffrey Lewis · Joan Blackman · Jesse Vint and Max Baer original music by Stu Phillips · executive producer Roger Camras · screenplay by Max Baer and Richard Compton · story by Max Baer · produced by Max Baer · directed by Richard Compton
"Another Place, Another Time" composed and sung by Bobbie Gentry color by CFI
ADMITTANCE RESTRICTED TO PERSONS 18 YEARS OF AGE OR OVER
Box Office Opens 8 p.m. · Show starts at Dusk an American International release

PLUS Initiation is Murder "THE BIG FAMILY"
MUSTANG DRIVE-IN THEATRE
1 Mile E. of Guelph City Limits Just off Hwy. No. 7
Phone 824-5431



MILTON'S NEW A & W RESTAURANT was officially opened with a ribbon-cutting ceremony. Milton Chamber of Commerce president Emmerson McCready snips the white ribbon as owner Ken Marshall looks on and two hostesses hold the ribbon. The new building on Steeles Ave. includes an

inside restaurant, outdoor picnic area and a drive-in area for "come as you are, eat in your car" service.

Gun handling

When is a gun loaded? The Ontario Safety League thinks this is an important question which could effect the safety of many people during the fall hunting season, so here is the answer: According to Ontario law a

gun is considered to be loaded if it has a cartridge in the magazine or in the chamber. Furthermore, it is illegal to carry a loaded gun on or discharge it from an aircraft, motor vehicle, powered boat, or other vehicles including horse-drawn wagons or buggies.

To
Set a Man
Apart

Knight's

MEN'S WEAR LTD.

202 MAIN ST. MILTON
878-4472

ITEM AFTER ITEM...

low priced

bigger savings

<p>Capri Pkg. of 4's</p> <p>BATHROOM TISSUE 79¢</p>	<h2 style="font-size: 3em; margin: 0;">SUPER SPECIALS</h2>
<p>White Swan (Twin Pak) Pkg. of 2's</p> <p>PAPER TOWELS 79¢</p>	
<p>Zest (Pkg. of 3's)</p> <p>FACE SOAP BATH SIZE 89¢</p>	

<p style="text-align: center; font-weight: bold;">GARDEN FRESH PRODUCE</p> <p>Fresh No. 1 Ont. heads</p> <p>LETTUCE 2 35¢</p> <p>Fresh No. 1 Ont. heads</p> <p>GREEN CABBAGE 2 35¢</p> <p>Fresh No. 1 Ont. bunches</p> <p>GREEN ONIONS or RADISHES 3 25¢</p> <p>Fresh No. 1 Ont. bunches</p> <p>CELERY 2 49¢</p> <p>Fresh No. 1 Ont. bunches</p> <p>CUCUMBERS 3 49¢</p>	<p>Jack's "PLAIN" Reg. 69¢ pkg.</p> <p>POTATO CHIPS 49¢</p> <p>Schneider's (1 lb. pkg.)</p> <p>CHEESE SLICES 95¢</p> <p>PLAIN or SINGLE</p> <p>Salada (Pkg. of 60's)</p> <p>(O.P.)</p> <p>TEA BAGS 89¢</p> <p>Wonderbread "HOMESTEAD" SLICED WHITE (24 oz. loaves)</p> <p>BREAD 3 loaves 99¢</p> <p>Juicy Sweet</p> <p>WATERMELON 99¢</p>
--	--

<p>Yellowripe</p> <p>BANANAS</p> <p style="text-align: center; font-size: 1.5em;">10¢ lb.</p>	<p>No. 1 Canada Transparent</p> <p>APPLES</p> <p style="text-align: center; font-size: 1.5em;">79¢</p> <p style="font-size: 0.8em;">3 lb. bag</p>	<p>No. 1 Canada Close</p> <p>APPLES</p> <p style="text-align: center; font-size: 1.5em;">69¢</p> <p style="font-size: 0.8em;">3 lb. bag</p>
--	--	--

WE SELL ONLY GOVERNMENT GRADED MEATS

<p>Ground Fresh - Lean</p> <p>MINCED BEEF 69¢ lb.</p>	<p>Fresh Lean</p> <p>STEWING BEEF \$1.19 lb.</p>
<p>Fresh - Lean</p> <p>RUMP ROASTS \$1.69 lb.</p>	<p>Fresh - Lean - Full Cut</p> <p>ROUND STEAKS \$1.49 lb.</p>
<p>Canada Packers (Sunset)</p> <p>SLICED BACON \$1.09</p> <p style="font-size: 0.8em;">Lb. Pkg. Vac Pac</p>	<p>Maple Leaf (Cryovac) S.P. (halves)</p> <p>COTTAGE ROLLS 89¢ lb.</p>
<p>Maple Leaf (Cryovac)</p> <p>PICNICS 75¢ lb.</p>	<p>Fresh Lean</p> <p>BUTT PORK ROASTS</p> <p>Fresh Lean</p> <p>BUTT PORK CHOPS 85¢ lb.</p>

ALFONSO'S FRUIT MARKET

174 MILL ST. FREE DELIVERY 878-2460

OPEN DAILY 8 A.M. TO 10 P.M. SATURDAY 8 A.M. TO 6 P.M. ONLY