

Pineview goes creative

Barren playground becomes a challenging experience

Story and photos
By Bob Burt

The creative playground at Pineview School is now well under construction but the eight workers will be kept busy to complete the playground by September.

Youngsters in the area and those attending the day camp at the school aren't waiting for September to reap benefits from some of the odd shaped apparatus being erected on the grounds. Summer days find youngsters swinging from bars, mounting a huge wooden horse or climbing through concrete tunnels. Eight students sponsored by a \$6,000 LIP grant and the graciousness of the community embarked on the project early in the summer.

Plenty of help
Everything from an old boat to railroad ties, screws, barrels, old tires and lumber have been donated to the cause. Some nearby residents have made trucks and tractors available for the project. Many of the materials were stockpiled over the winter and spring months.

A grade three teacher at Pineview School, Herb Pilles is credited as being the founder and driving force behind the project. He convinced school principal Grant Hutchings that he could convert a barren schoolyard into an alive and challenging area.

Six high school and two college students were recruited, community help solicited and the show was on the road. For the better part the playground is being developed from discarded materials. A huge sandbox has been made using beams that will eventually hold the sand in place. Old tires have been mounted on poles and serve as a climbing apparatus.

Great ride
The workers are busy now running a line about 90 feet long. The line will run from one tall pole to a shorter pole and youngsters will be able to hop on and have a ride. Special safety precautions are being taken.

The project has been taken on at Pineview as a pilot project and other Halton schools will be watching the progress and activity at the school.

Lorna Greenfield, one of the workers involved said at first she felt the idea was better suited for town or city schools. She noted the country had an abundance of wide open spaces and a lot of things to do.

But already the playground has developed into a magnet for area youngsters and

Lorna's doubts have been removed. She and several of the other workers became involved when Pilles visited the high school looking for workers and explaining his project.

Drop in
Adults from the community drop in frequently to check progress and volunteer assistance.

According to Lorna, the community serves as an excellent resource centre that the workers have learned to draw on for advice, assistance and equipment.

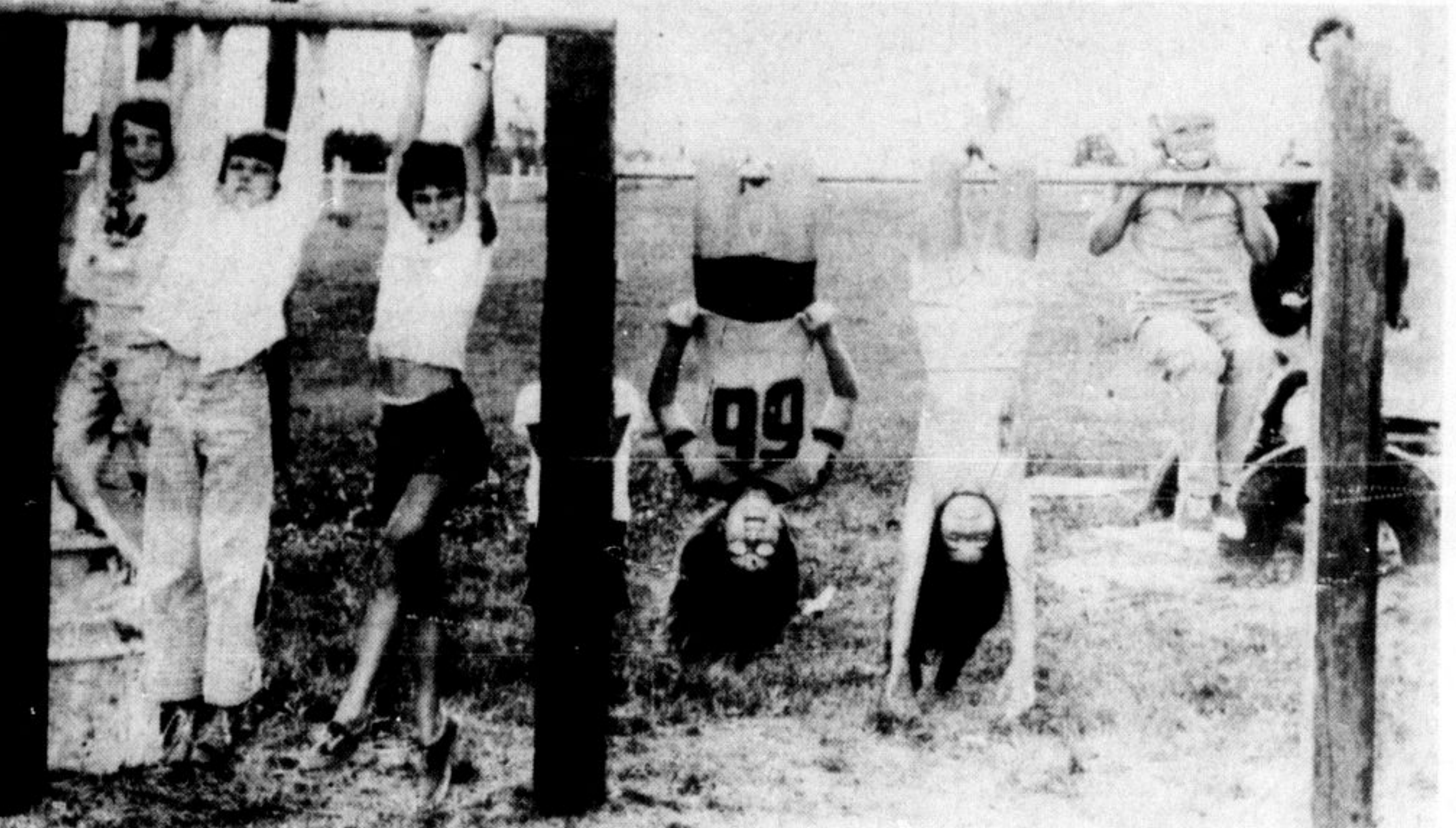
All of the workers are young and often lack the expertise needed in the areas of carpentry and other aspects of construction.

Those involved in the work are Jane and Connie Ferri, Graham Bell, Paul Brown, Ron Wellon, Chris Deschane, Scott Webber and Lorna

Greenfield. Pilles visits the site often, usually spending all or part of his day at the playground several times a week.



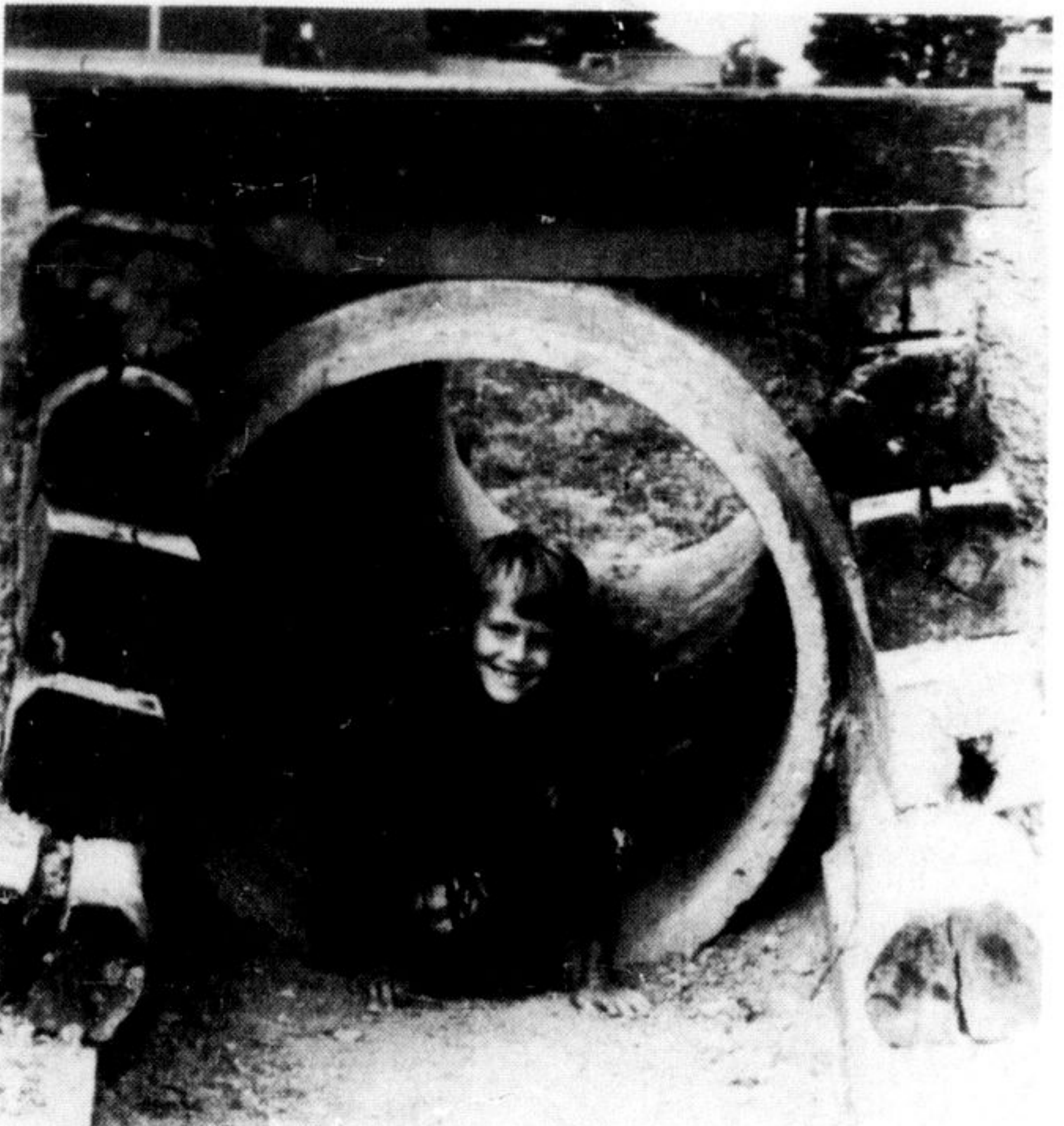
A RIDING WE WILL GO. A wooden horse made from discarded materials makes great fun for these youngsters. The horse doesn't gallop at a very fast pace, but for these children that's not a deterrent to good fun.



MONKEY BARS are a popular attraction at the creative playground now under construction at Pineview School in Halton Hills.



OFY WORKERS Chris Deschene and Graham Bell lift a beam into place as work on a pyramid or climbing apparatus nears completion. The pyramid is one of several innovative playthings that help make up the creative playground at Pineview School.



KELLY KOESLAG, an eight-year-old takes a run, or at any rate a crawl through one of two tunnels at Pineview School's creative playground. The playground is being built basically from discarded materials while an Opportunities for Youth grant covered the labor costs for the eight workers.

MILTON TELEPHONE ANSWERING SERVICE
• CONFIDENTIAL
• COURTEOUS
• PERSONALIZED
878-2020

ONE HUNDRED AND THIRD IN A SERIES

A Mark of Progress in Milton



Dozens of units of town housing are being built this summer in Milton for prospective purchasers. This section is shown off Bronte St. In addition to the multi-family housing units of this type, permits for 240 single family units have been issued in the first half of 1974. We hope the new residents who take up homes here will find it a friendly community.

For a progressive Insurance Programme at competitive rates contact...

McCuaig INSURANCE

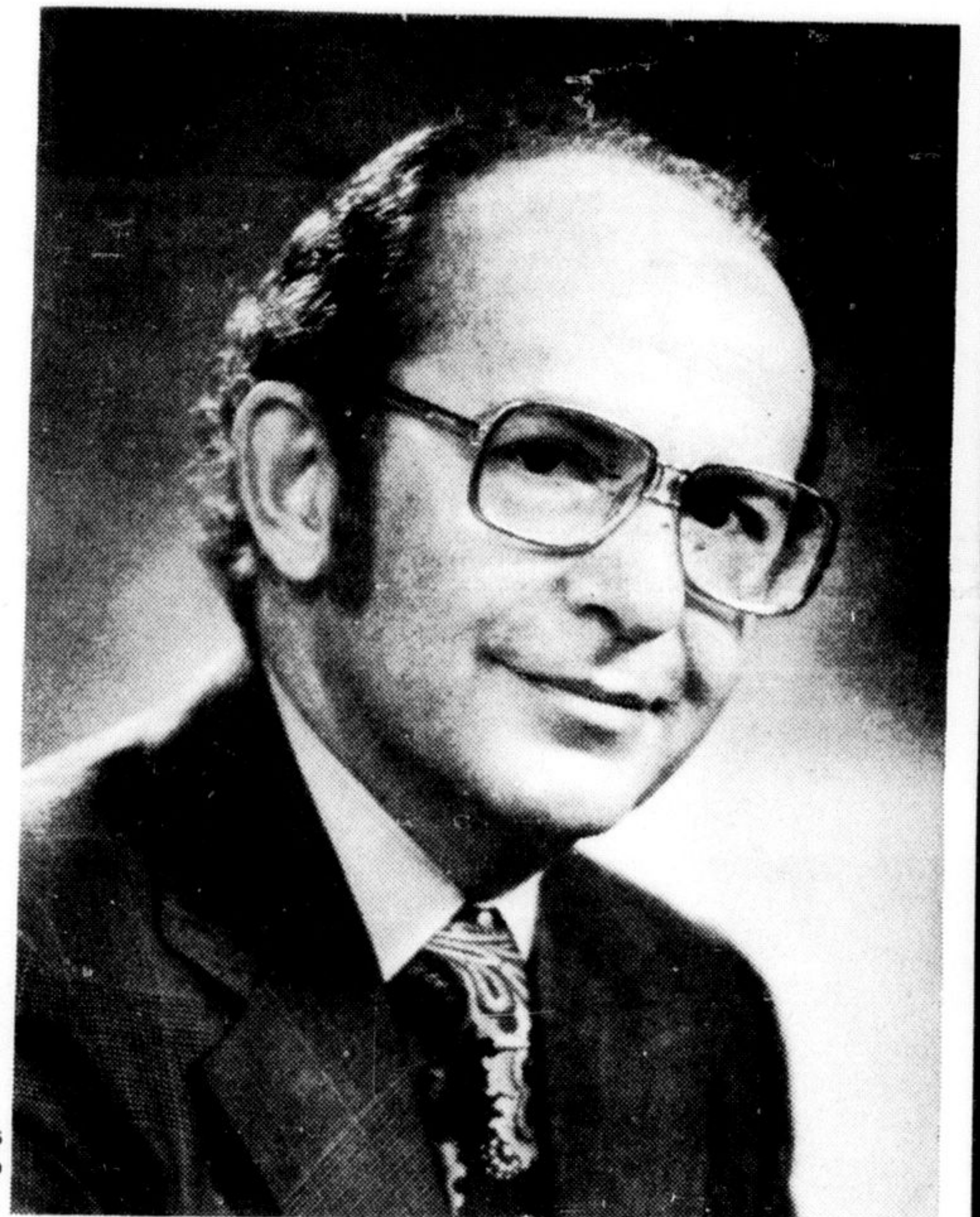
208 Main Street E., Milton 878-2894

The Salvation Army
PICK-UP TRUCK
In Milton & Area
EVERY TUESDAY
877-8522

1/2 PRICE OR LESS
As low as **2** OR LESS

Our greatest sale of the year for you ... it's our birthday

Choose from \$1,800,000 worth of the finest carpeting made today at prices that happen only because it's our 49th Birthday... and we would like to celebrate it with you.



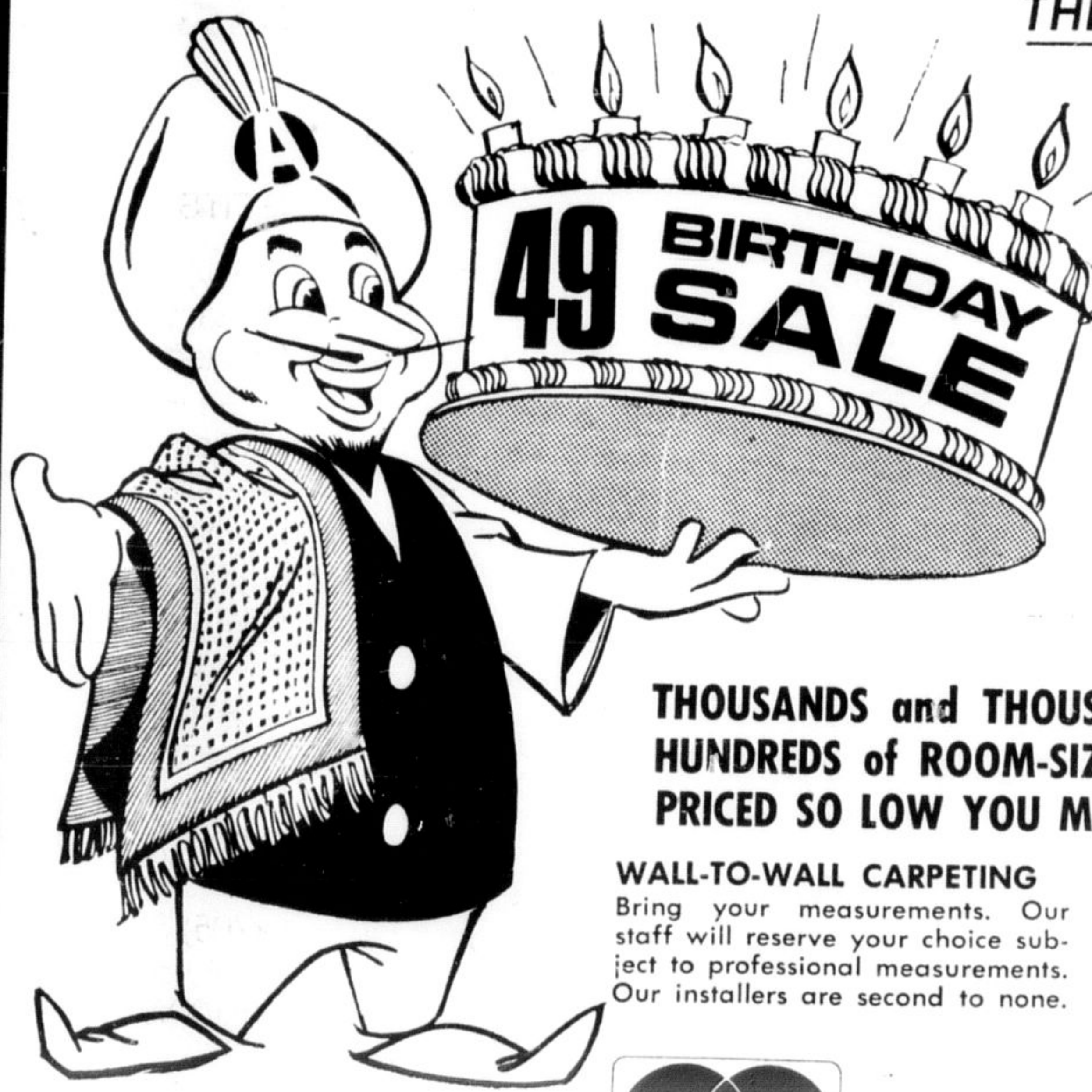
ARAM ALEXANIAN, President

ENTIRE STOCK of BROADLOOM & INDIAN RUGS

THE CHOICE IS YOURS...

Harding - Burlington - Venture - Westmills - Caravelle - Kraus - Coronet etc.

Acrylics, Nylon, Polyester
Shags, Twists,
Textured, Patterns



THOUSANDS and THOUSANDS of YARDS of BROADLOOM HUNDREDS of ROOM-SIZE RUGS - PRICED SO LOW YOU MUST SEE IT TO BELIEVE IT!

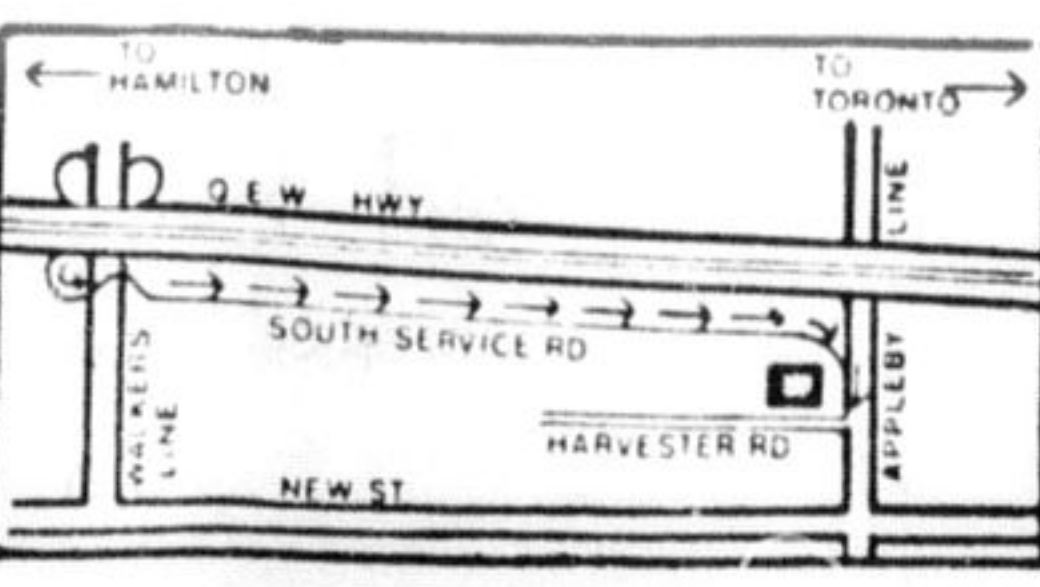
WALL-TO-WALL CARPETING
Bring your measurements. Our staff will reserve your choice subject to professional measurements. Our installers are second to none.

USE YOUR GOOD CREDIT
Keep your cash... use one of Alexanian's tailored for you credit plans. CASH or CREDIT... you save either way.

CAN'T COME IN...
Just give us a call and we'll be right over day or night.



Open Daily 10 a.m. to 6 p.m. — THURS. & FRI. TILL 9



BURLINGTON

Alexanian carpet

870 APPLEBY LINE—BURLINGTON—639-4934

Survey support

A preliminary engineering study along the 16 Mile Creek in Oakville got a boost this week with the announcement of a \$2,250 Ontario government grant to assist in covering the cost.

Halton Region Conservation Authority proposes to undertake soils investigations in the immediate vicinity of a recent landslide to determine the safety of the embankment and residential dwellings. Halton East MPP Jim Snow, Minister of Government Services, announced the grant.

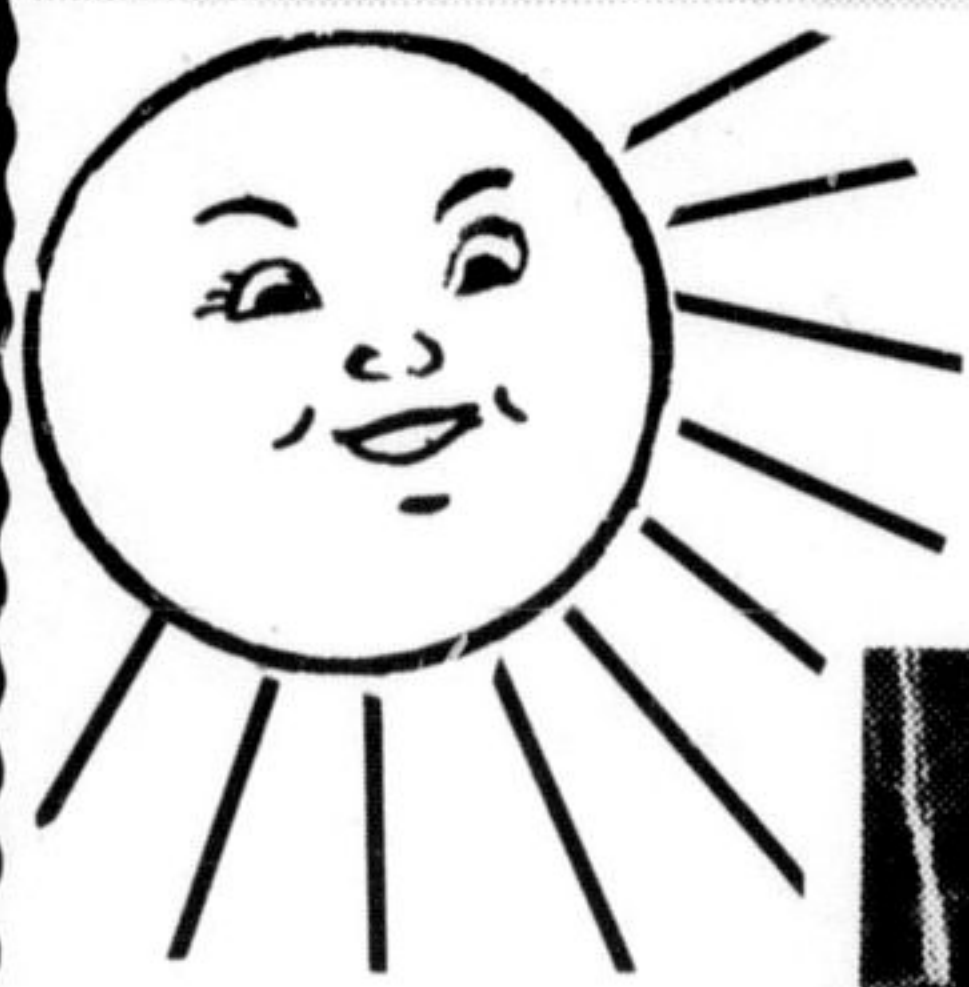
FAY'S ELECTRIC



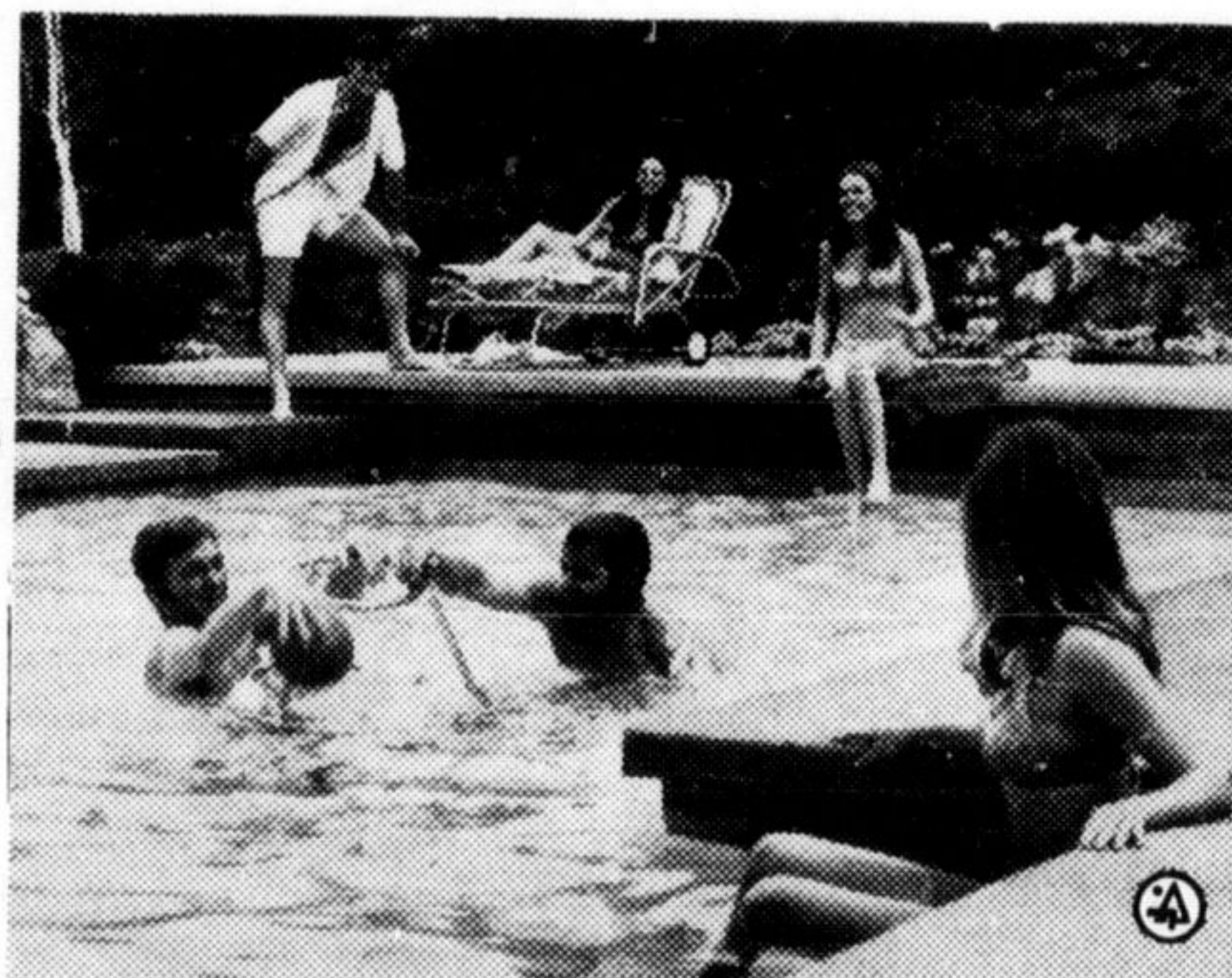
COMPLETE ELECTRIC SERVICE
* INDUSTRIAL MAINTENANCE
* ELECTRICAL CONTRACTING
* ELECTRIC HEATING
* WATER HEATER RENTALS
878-2048
FREE ESTIMATES

MILTON DOMINION HARDWARE

227 Main St. E., Milton, 878-2353



Plunge into Summer!



We have a complete line of pool chemicals and equipment and are qualified to help you with your pool problems.

POOL CHEMICALS AND EQUIPMENT

Make
Milton Dominion Hardware
Your Pool Headquarters