

# The Canadian Champion

Vol. 114 No. 12

MILTON, ONTARIO, WEDNESDAY, JULY 17, 1974

Second Section



**BARN SIDING BAR** has black imitation slate on the counter. Above Lynda is the chandelier Jon made of an old wagon wheel. The glass shelves sit against an antique mirror.



**UNIQUE WALL** in dinette provides a background for a collection of old clocks, spoons, pictures and Lynda's collection of Delft. The area is up two steps and open to the family room.

**32nd**  
in a series on homes of  
distinction in Halton  
by Joyce Beaton



**EARLY AMERICAN** home of Jon and Lynda Leaver is built in a rustic setting on 75 acres of land on the Guelph Line. It has 14 rooms with five bedrooms and five bathrooms. The property was once the Coulson family homestead.

## Jon and Lynda Leaver

# Early American influence combined with Canadiana

The house Lynda and Jon Leaver planned took one and a half years to build. Some of their ideas came from magazines but most were formulated from their personal likes and adapted to their living style. Built in a rustic setting, the architecture is closest to Early

American. Inside, the decor and furnishings combine the American and Canadiana influences.

Lynda and Jon moved into the 14 room house in February with their three children Heather 9, Krista 4, and Michael 3. The house was obviously designed with

family-living in mind. It has five bedrooms and five bathrooms and a basement to be finished as a games room with ping pong and pool tables.

### Iron gate

The large entrance hall and formal living and dining rooms are deeply carpeted in slate blue. For obvious reasons the children are encouraged to restrict their boisterous activities to the less formal areas of the family room and basement games room. An impressive wrought iron gate separates the carpeted area from the kitchen.

Modern and traditional building concepts have been blended together in this lovely home with family heirlooms and refinished antiques accounting for most of the furnishings.

The 75-acre property on the Guelph Line was once the Coulson homestead. The old stone house was not reclaimable but before dismantling the Leavers carefully removed newel posts, stair railings, banisters and trim. These were used as models for the new custom-made trim and railings throughout the house.

### Old pine

Similarly, the pine panelling in the family room was wood that had been cut in B.C. 30 years ago. At that time it was shipped by rail to Owen Sound, trucked to the Leaver summer place in Tobermory and later stored in a garage in Cooksville. Jon and Lynda saw its potential, had it milled in random widths, (all the pieces are longer than can now be found) and used for the walls and cupboards in this lovely new home.

The family room is everything it should be. The ceiling to floor stone fireplace has the stereo and T.V. built high (out of reach of small hands) on either side behind

louvered doors. Below it are storage drawers for the children's toys. Wood storage is under the hearth.

### Barn siding

The room runs the full width of the house. A large bar of barn siding has black imitation slate on the counter. The step-down wet bar has built-in fridge and sink. An antique mirror behind the arched shelving area has recessed lighting. The lamp on the bar was made by Jon from an old barn beam.

Jon is an accomplished and imaginative worker with wood. He has converted an old wagon wheel to a chandelier and made a glass-topped table from a second wheel on a tripod of horse hames. An old newel post has been refinished and converted to a large candle stand and what was once a piano stool is now a floor lamp.

Lynda and Jon worked together to refinish an old oak secretary with leaded glass and to convert an heirloom drop-leaf kitchen table to a serviceable and attractive coffee table. An antique Windsor chair, spinning wheel, and chest of drawers with tongue and groove construction held together with square-headed nails, add

to the Canadiana flavor of the room. Large sliding doors lead from the family room to an extensive patio.

### Unusual wall

Up two stairs and open to the family room is the dinette. A beautifully refinished old oval oak table centres the area. Behind it is a blue checked wall divided with cedar posts. The wall provides an original background for a collection of old clocks, spoons, pictures and Lynda's collection of Delft.

The dinette continues freely into the expansive kitchen with its custom-made knotty pine cupboards and counter-top eating area. Behind the counter is Dutch Delft blue tile from Germany. An old pine cutlery tray sits on the counter to receive incoming and outgoing mail.

### French windows

The dining room at present is a combination of a formal mahogany dining suite and pieces of Canadiana. An old harvest side-table, pine washstand and butter churn are the beginnings of what will one day be a rustically-furnished room. Pine wainscotting meets Early American wallpaper in blues and greens. Facing the front

of the house the ceiling to floor windows are French door design.

Beyond the wide impressive entrance hall is the formal living room. Furnished almost entirely in antiques the colors are complementary to the rich blue carpet. Two striped pink love seats and a high back pink velvet chair blend well with two green velvet armchairs.

### Raised library

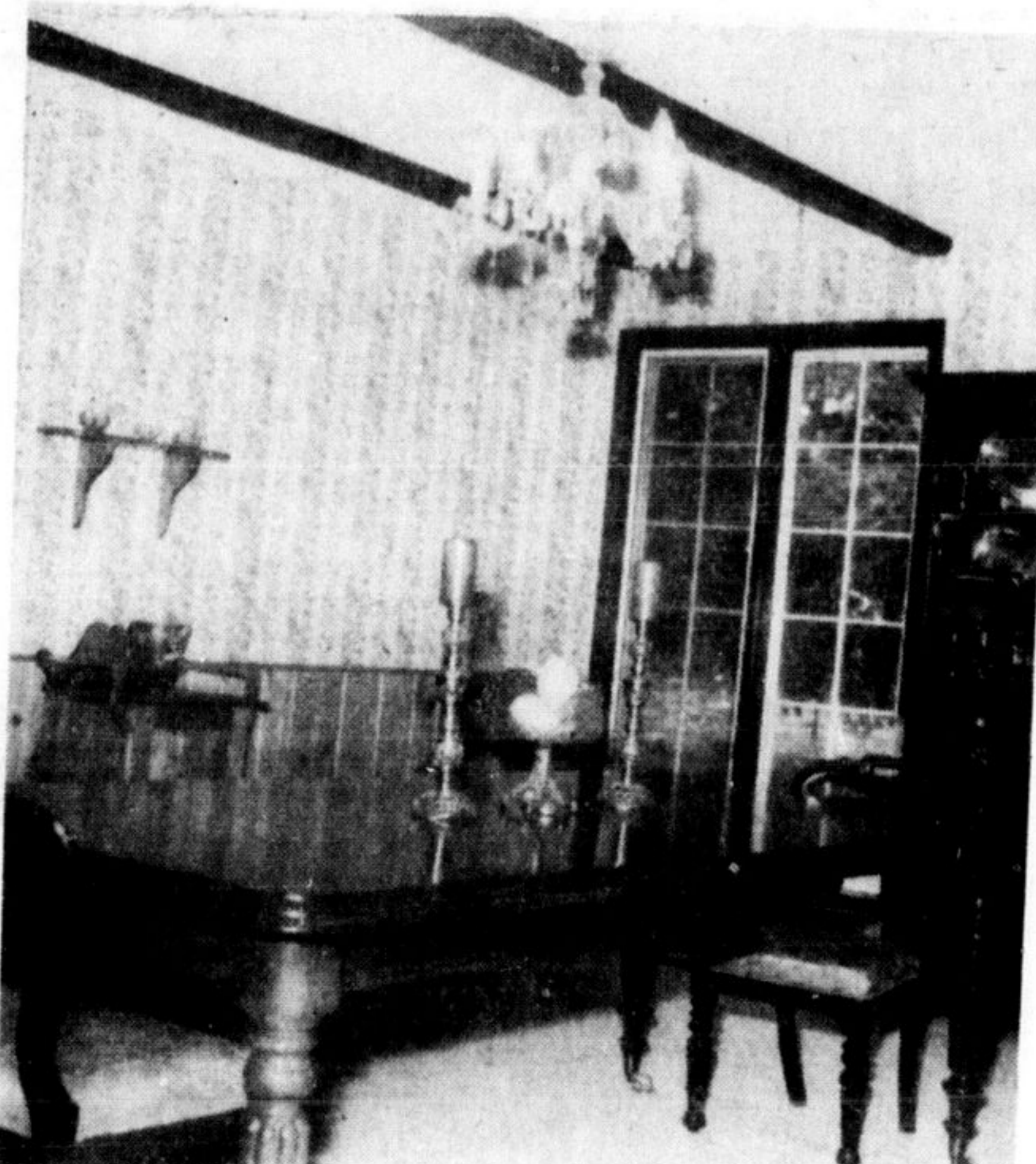
A raised level at one end of the room is divided by heavy railing and posts to accommodate the library. An old oak rolled top desk centres the two ceiling-to-floor windows and the walls on either side are built-in shelves.

Each child has a separate bedroom with built-in desk and decor appropriate to the age and interests of the child. Michael's room has barn siding on one wall with drapes in brown, red, black and white. Heather has a glassed doll chest for her collection and cork behind the desk for her school work. Krista's room is pink, red, blue and white.

### Bedrooms

The spare room has a vanity where the children's desks are located and is furnished in Jon's grandmother's bedroom suite. There is a yellow shag rug and yellow gingham wallpaper. The chest of drawers, T.V. set, and cupboard space are all behind bi-fold doors. This room is most-times occupied by live-in household help.

The master bedroom is in Spanish decor with deep burgundy velvet swags and a white shag rug. Red and gold striped wallpaper at the head of the bed provides background for side swag lamps. An adjoining dressing room has separate closets, vanity and en-suite bathroom with separate shower stall.



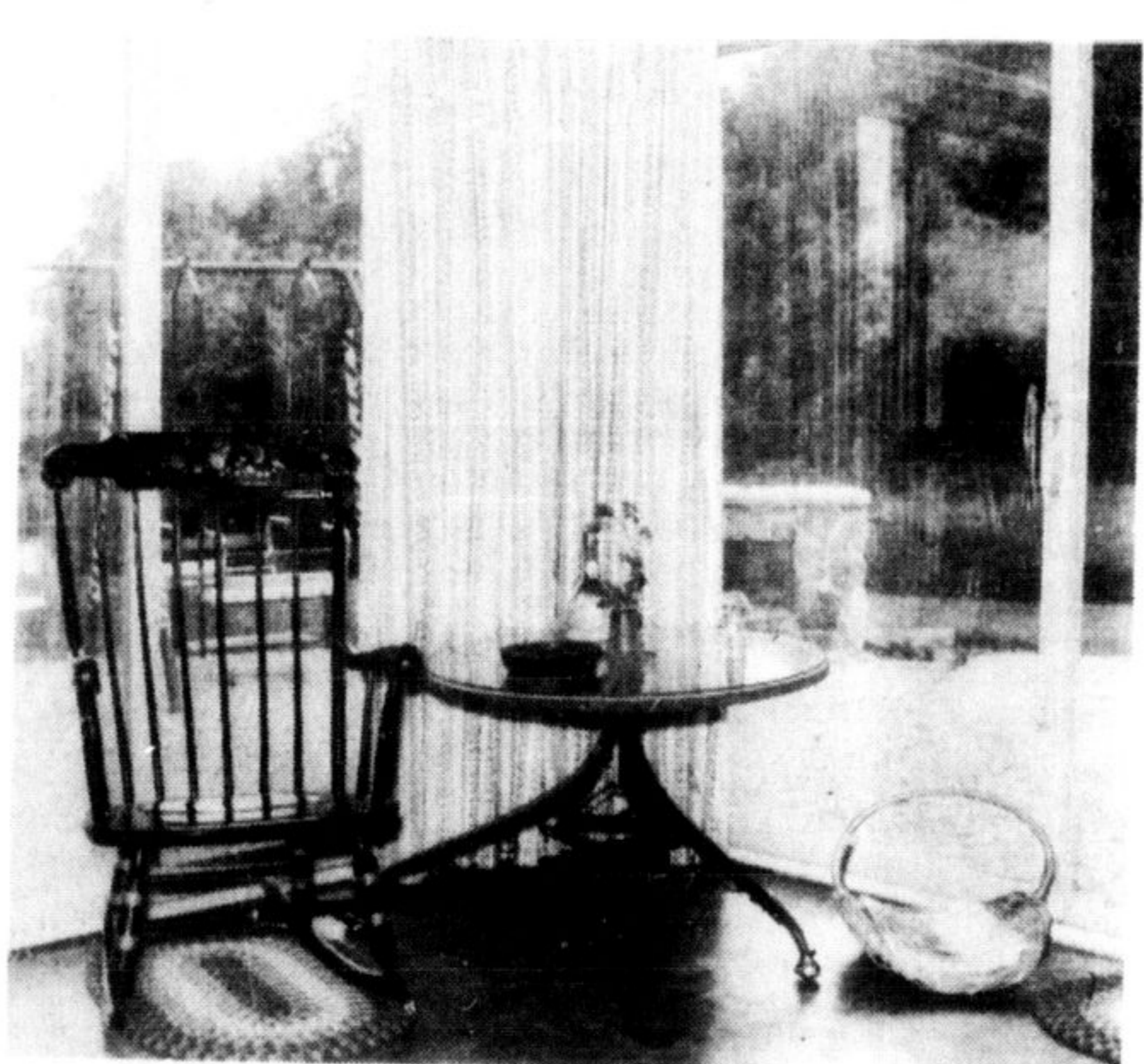
**DINING ROOM** has pine wainscotting and Early American wallpaper. It is a combination of formal and rustic.



**EXPANSIVE KITCHEN** flows freely from the dinette area. Here Krista, Michael and Heather sit on the stools at the end of the counter. All wood is pine.



**WROUGHT IRON GATE** separates the formal hall and living room from the kitchen and family room.



**WAGON WHEEL** has been made into a glass-topped table set on a tripod of horse hames. Sliding doors lead from the family room to the patio.

## 230 homes approved

Plans for 230 single family homes and an additional 5.8 acre townhouse site in the south west section of town was approved by Milton Council during their meeting July 9.

The development planned by Alliance Ex-Urban has been on the drawing board for over two years and was considered by the former Milton council.

The developer has agreed to a number of provisions prior to having the development approved. A 9.6 acre park will be dedicated to the town as well as 2.5 acre park dedication which ad-

joins a five acre park site already allocated by another developer.

Planner Bob Zsadyani noted some red line revisions were made in the plan. He noted the proposed extensions of Meadowbrook Dr. to Derry Rd. was eliminated from the plan. The intersection would have come too close to entrances at the hospital the previous planning board had indicated.

Fresh water covers about 290,000 square miles of Canada's area.



**LYNDA LEAVER** stands in the entrance hall beside the macramé hanging of mushrooms.



**RAISED LIBRARY** is divided from the living room by a heavy railing. Here Lynda adjusts the books on the shelf in front of the French windows. The old oak rolled top desk has been refinished.



**IMPRESSIVE ENTRANCE HALL** has railings and newel posts designed after those in the old Coulson family stone house. The plush carpet is slate blue. Heather and Krista sit on steps to back door and basement.