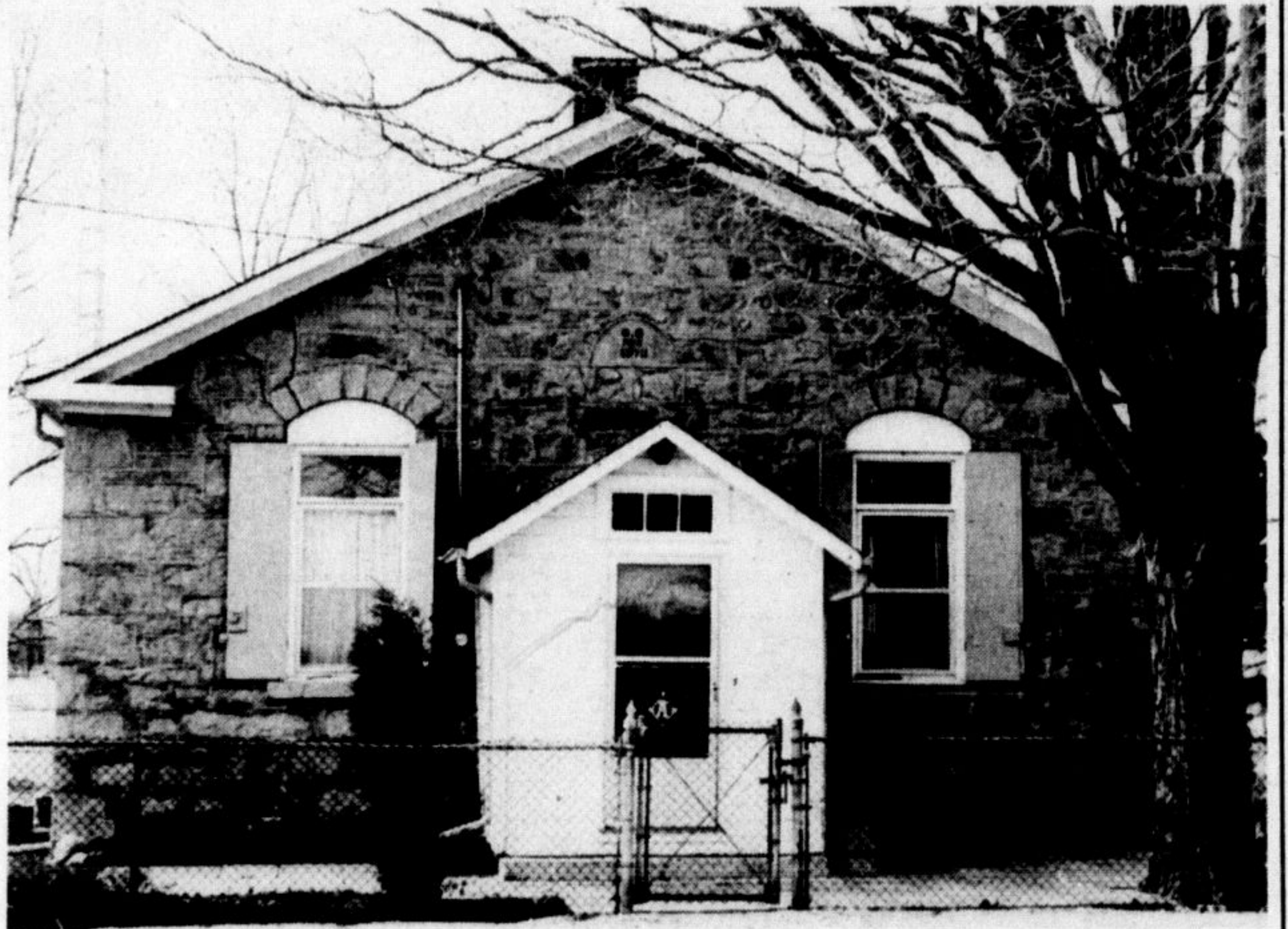


# SCHOOL

is different now . . . .

Those one room school houses still dot the country roads. Many have changed though, with imagination and perseverance transforming them into attractive living accommodation. Around the country you'll find them in various stages of change, just as our photographer did on the by-ways of Halton.



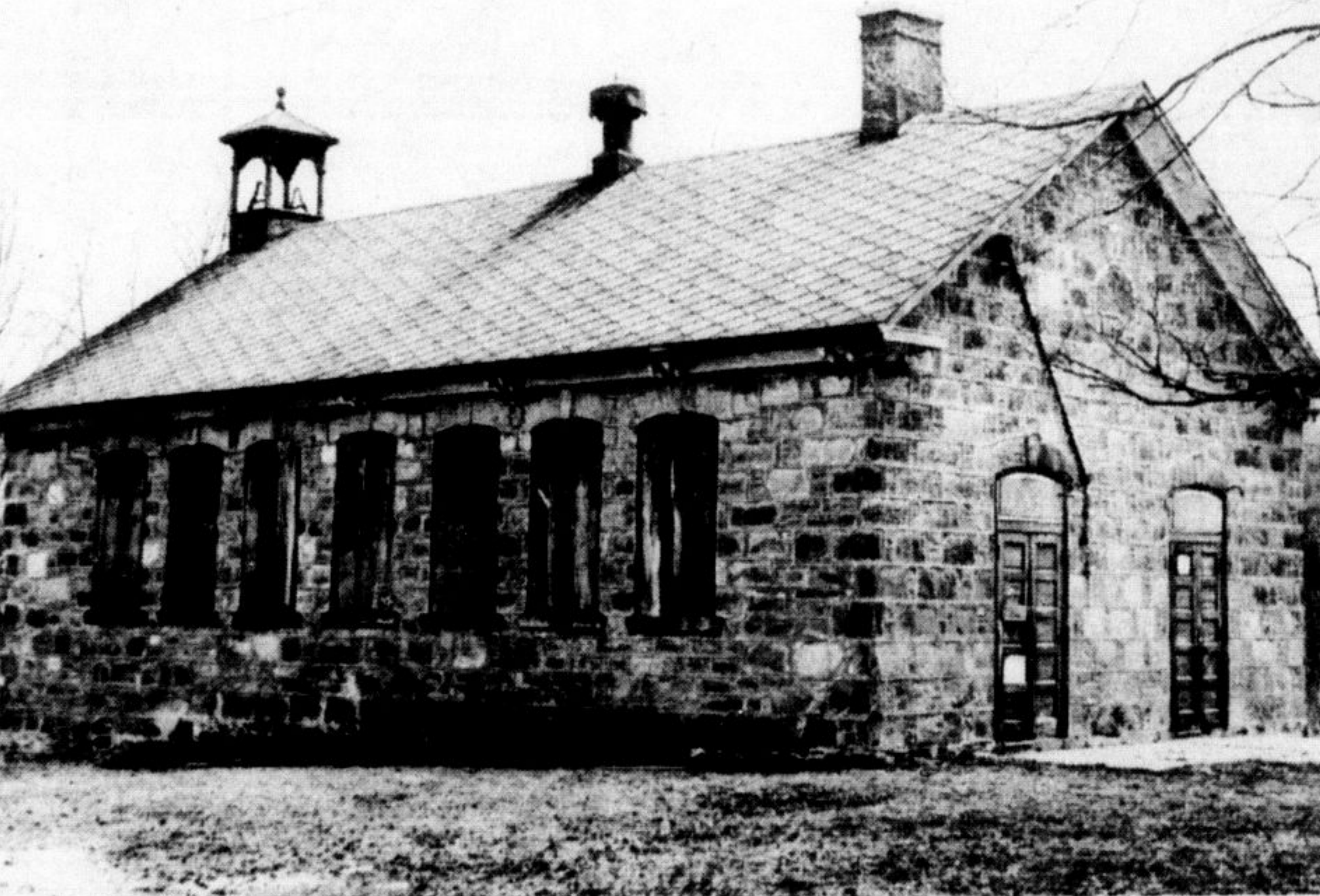
S.S. No. 7 was built in 1872 on the corner of 15 Sideroad and the 5th Line of Nassagaweya.



S.S. No. 3 is located on the corner of 15 Sideroad and the 2nd Line Nassagaweya. It was built in 1870.



The Lorn school S.S. No. 12 erected in July 1882 is situated just north of Acton on highway 25.



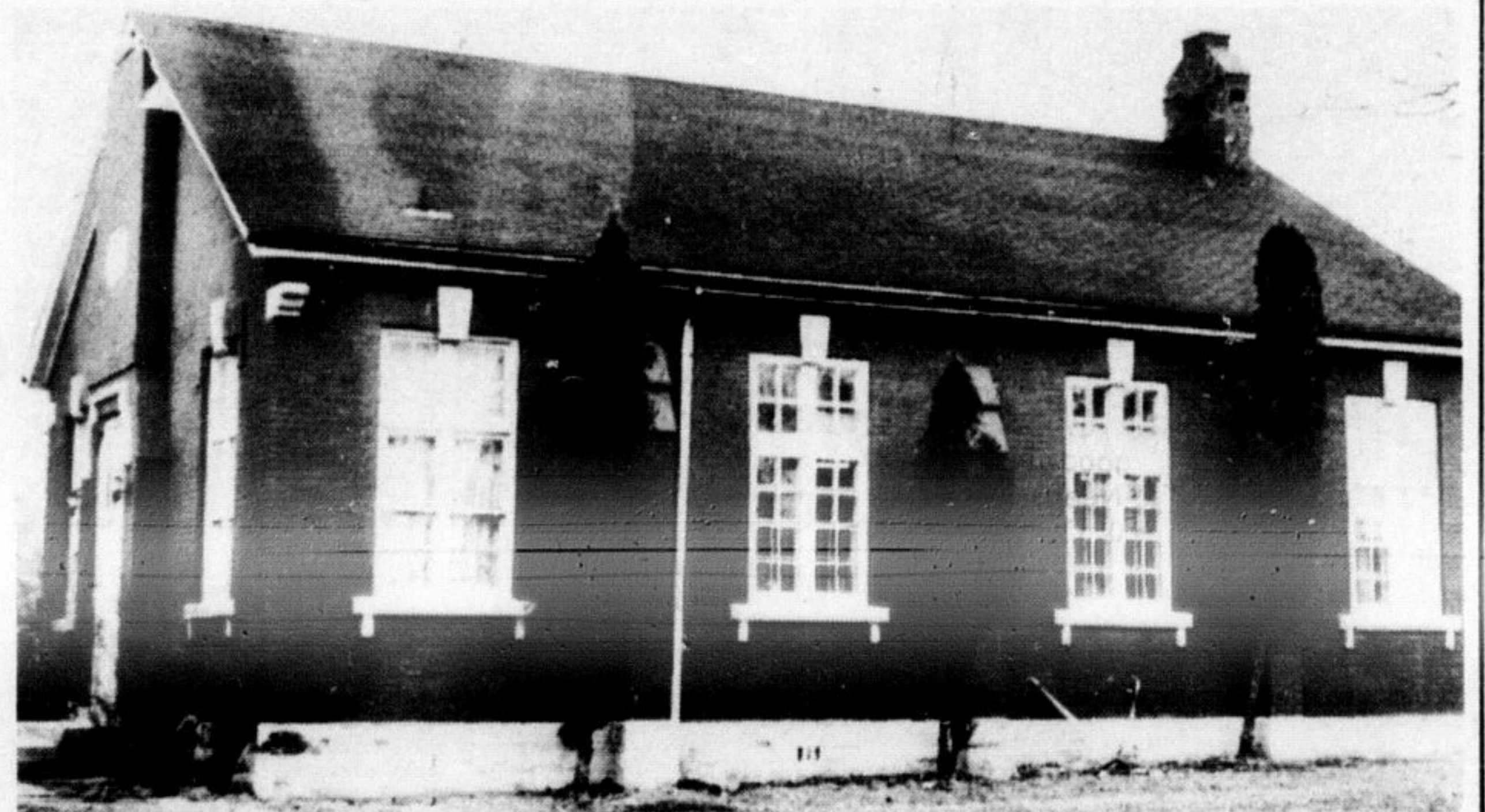
The old Christie school, S.S. No. 6 built in 1886 still remains closed on the 5th Line Nassagaweya below 5 Sideroad.



Standing on highway 25 below Speyside is S.S. No. 10 built in 1903.



S.S. No. 3 was built at Ashgrove on the 7th Line of Esquesing in 1870.



The S.S. A.E. was a Union School serving both Trafalgar and Esquesing at Hornby when it was built in 1870.