

CAS panel discusses government take-over

Prompted by the "Hanson Report", a publication of the Ministry of Community and Social Services in which the structure of Children's Aid Society boards comes under attack, the Halton board sponsored a panel discussion entitled "Implications of government assuming full control of Children's Aid Societies," during its annual meeting last week.

David McCoy, a member of the government task force, spoke in defense of the report. He described social work as "being in the dilemma of operating an ambulance at the bottom of a cliff and wondering why the hell people are falling over." He claimed as a non-issue, the suggestion that the government is interested in taking over the CAS.

"We rejected this for a number of reasons, one being that citizen involvement is crucial. The question becomes, how do we have true citizen involvement when full funding comes from the government. What happens when the citizen has no money to raise for the organization?"

He believes citizens should be involved on CAS boards in some way, especially in the area of child welfare. Kay Fleming, president of the Ontario Association of Children's Aid Societies, felt the answer was in keeping the

associations small enough to manage within the community, and responsive and democratic enough through the involvement of the community.

Retarded
"A good example has been with parent voluntary organizations in the work with retarded children," she said. "There have been innovations made. When the government intervenes it is a matter of service provided to as many as possible as economically as possible. The question remains, how can we increase our facilities without sacrificing quality?" Mrs. Fleming pointed out how less money is spent with a volunteer program than with the government setup.

Ronald Searle, president of CAS of Peel Region, advocated the present board setup remain unchanged. "I become angry when I read in the Hanson Report the ingrained bias that CAS should come under the provincial or regional governments. The report is full of negative aspects of CAS with no documentation of facts."

Mr. Searle objected to the report attacking the structure of the boards, calling them self-perpetuating. "Why, they are suggesting politicians are on the board only because they are appointed," he said,

"not because they care. The citizen members of CAS boards provide an input no government could provide."

Hang Hanson
Mr. McCoy suggested Mr. Searle had not read the report carefully. "If they hang Hugh Hanson for this report, I want some of the rope around my neck," he said. Mr. McCoy was one of the writers of the report. "I am continually surprised at the interpretation of take-over. The role of the government is the issue here, not the government take-over."

Panelist professor Cyril Greenland of the School of Social Work at McMaster University said he considered Hugh Hanson to be a most able administrator who was not present to defend himself. "I believe the CAS in child abuse situations is ineffective. There is an increasing number of disturbed families and children in our society, violent crimes by young children are on the rise, and yet the Hanson study gives no consideration as to behavior disorders in children."

Child abuse
Professor Greenland believe prevention is cheaper and more satisfactory in the long run. "A follow-up study on abused children revealed the domestic situation had changed little, there was still poverty, inadequate parent-

ing, disruptive family life, and too many children in one family."

His recommendation was that children should be wanted and loved. "This is the most important factor in the growth of healthy people."

Mrs. Fleming suggested the role of parenting should be taught at the elementary and secondary school level. She also recommends the adoption of a declaration of rights of children, a children's Bill of Rights.

Bad image
Discussion opened to members of the audience at the CAS annual meeting. Dr. Gordon Askwith, CAS executive director, said the Hanson report gave an assessment of the problems without giving a definition of what the problems are. "Our hostilities toward each other and the children in our society is the real problem."

Councillor Pat McLaughlin of Burlington, a member of the board for two months, said his opinion of CAS used to be "a bunch of snobs who swooped down on poor areas and grabbed children to be adopted into rich families. I thought of you as a bunch of kidnapers, when I was young." Mr. McLaughlin told how his opinion has changed in the past few months but he urged better communication with the public.



A PAIR OF YOUNG HORSEWOMEN mounted their steeds for a trot down Heslop Rd. Sunday afternoon. Horse fanciers choose back country roads to work their animals more often than Milton's residential streets. Just the same, it's better than watching cars drive by.

(Photo by D. Pink)

CAS urges prevention diamond jubilee year

The diamond jubilee, 60 years of child welfare work in Halton, was celebrated at the annual meeting of The Children's Aid Society of the Regional Municipality of Halton Wednesday. It was February 15, 1914 the first meeting was held in Knox Presbyterian Church, Milton.

Close to 300 people, honorary life members, officers, directors, staff, supervisors, social workers and clerical staff met at Halton Centennial Manor to hear year-end reports and to elect the 1974 directors.

Craig Fraser, 1973 president of the society, spoke of the challenges that lie ahead in the raising of foster children. "It's not that simple to raise a family, but when you consider the addition of two or more foster children to that family who require extra patience and attention, that offers a real challenge."

Mr. Fraser recommended the society in the coming year do more to assist foster parents in supportive programs. He also urged more preventive client services, services before rather than after the fact, be promoted.

Budget
He listed the 1974 budget as another "challenge". Parity in wages with comparable societies were met in 1973 as well as improved employee benefits. New accommodation on 1160 Blair Road, Burlington has also raised the cost of operation.

Direct costs of services for children in care for 1973 were \$209,424.64 as compared to the 1972 figure \$159,087.59. Cost of administration was \$170,871.77.

Catherine Walsh, society auxiliary director, introduced Nancy Ross, the first paid co-

ordinator of volunteer services, who began her work last fall. Volunteers are used extensively as babysitters, typists, case-aid workers in the capacity of big brother, aunt or uncle to foster children, and as drivers.

Pressures
Executive Director Dr. Gordon K. Askwith announced the end of the child welfare branch in Ontario. Now the children's service bureau, reports will be handled in the district rather than through Queen's Park. Dr. Askwith referred to the new administrative accommodation as "offering the

dignity our clients should have in a friendly and efficient setting."

He said demands from the community to provide prevention-protection services are putting the case workers under excessive pressures. Although not as many babies are up for adoption, there are more older children with a variety of handicaps who require a great deal of help in becoming part of their new homes.

"I'm happy to report it is no longer difficult to place children of other ethnic backgrounds," Dr. Askwith said.

According to Harold Smith, director of Foster Parents' Association of the Children's Aid Society the general public has a negative attitude toward foster children. "This is mostly because of adverse publicity in the newspapers," he claims.

A step toward correcting the misconceptions is a stepped-up program of information within the schools. Mr. Smith has spoken to several health classes and would like to expand this method of communication. "There is a great necessity for the teachers of these kids to know of their particular problems. Most teachers don't even know they have foster kids in their classes."

Judge
Meetings of foster parents and teenagers have been educational in nature with speakers on drugs, representatives of the board of

education and high school principals.

Judge Kenneth Langdon of Family Court came to talk to

the group, offering the children a chance to know him as a person and not as "the judge".

"They saw him as a human being," Mr. Smith said, "and not as someone with absolute control over their lives."

Says public maligns many foster children



George Heym

Will seek start-up subsidy

Treasurers from Halton regional municipalities will be asked to compile lists showing costs incurred as part of regional government start-up.

Once the lists are completed the region will make representation to John White,

Treasurer and Minister of Intergovernmental Affairs. The region will ask the province to subsidize start-up costs at the local level.

Regional level
About \$300,000 was allowed at the regional level for start-up costs. White has rejected

efforts by area councils seeking start-up costs. Area councils have been told this must be done at the regional level.

Halton Hills had requested the region to cover costs of \$6,100 in renovations for the council chambers in Halton Hills. The renovation is a direct result of regional government.

George Heym new president

George Heym of Oakville was named the new president of the Children's Aid Society of the Regional Municipality of Halton at the annual meeting Wednesday.

Mr. Heym, a purchasing agent with St. Lawrence Cement Co. in Clarkson, was chosen for a one year term. He has a total board membership of five years, from 1966-69 and again from 1972-74.

Mr. Heym confesses a great interest in children and finds the work with the CAS "very rewarding."

Directors
The 1974 Board of Directors, announced by Judge Douglas Latimer of the nominating committee are: Michael Irwin, vice-president; Marjorie Powys, secretary; William DeVries,

treasurer; councillors David Coons, Len Cox, Pat McLaughlin, Terry Mannell, Tom Sutherland; Craig Fraser, Dr. Sheila Paprica, Catherine Walsh, Ross Warriner of Burlington; Kenneth Gelok, Marjorie Ripley, Lorraine Wright, Oakville; Peter Marks, Halton Hills; and Ann Ptolemy, Milton.

POLLOCK AND CAMPBELL
Manufacturers of High Grade Memorials Memorial Engraving

Telephone 621-7580
62 Water St. North

THE DATSUN 610. BECAUSE THERE'S MORE TO LUXURY THAN JUST THICK CARPET.

We have a different perspective on luxury than most car manufacturers. In fact our most luxurious item in the Datsun 610 isn't even visible! It's called independent four-wheel suspension and you won't find it on many of today's cars.

What is it? It's a suspension system that allows each wheel to move independently of the other three. That means better road holding, less body strain on you when cornering and the assurance of a safe and comfortable ride even over the toughest bumps.

Of course, we don't stop there. We still give you the luxuries you come to expect in a top of the line car. And probably a few more besides! For instance, in the 610 we don't just offer you fingertip convenience in a wood fascia dash—we give you a trip odometer, and an electric clock that works!

We give you a centre console with floor shift, cloth seat inserts, a deep pile carpet you can really get your toes into, and fully retractable single-latch seat belts that allow you normal freedom of movement.

In the Datsun 610 we even give you the latest in wipers. Two speed and intermittent action electric wipers, a tinted panoramic windshield, "J" line windows. And we round it all off with chrome trim.

We haven't forgotten about the more simple comforts either, like fully-reclining, body-contoured front bucket seats with enough leg room and carpeted trunk space for a family of five. And to keep your driving enjoyable summer or winter, you'll find we've built in a powerful three-speed heater/de-froster, electric rear window defogger and a flow-through ventilation system that keeps everyone comfortable.

And underneath those classy 610 lines we give you performance too, with the famous Datsun rally-tested 2 litre engine with overhead camshaft, plus four-speed standard or optional three-speed automatic transmission. And with our power disc brakes up front and drum brakes behind, it's nice to know you can get from 70 to 0 as quickly as it took you to get up there!

So come and take a test drive in the Datsun 610. You're going to pay more for it than for the rest of our line, but then the Datsun 610 will give you more than you expected.

And isn't that what you really need?

IT'S ALL YOU REALLY NEED.



NORTH END DATSUN

610 Martin St. 878-2471

JUST SOUTH OF 401

COPELAND LUMBER

PAINT UP!
and SPREAD SPRING AROUND YOUR HOME

New INTERIOR moods created with color.

CIL
Paint Products

CIL

"CILTONE SATIN" \$10.15 Gal.

Interior Latex

Spring clean-up time is here again! Cover those winter-drab walls with vibrant colour! CIL paints offer you over 900 colour schemes to choose from. It's your chance to be your own decorator—and you'll be amazed at the results!

ON-THE-JOB ACCESSORIES

It's surprising how much easier a job can be when you work with the proper equipment. At Copeland Lumber, we have all the accessories to make your job quick, clean and easy. You'll be sure to take pride in the finished product!

TRAY & ROLLER KIT



7 1/2" TRAY, ROLLER ROLLER FRAME

\$1.95

Complete

GREAT VALUE!
3-BRUSH KIT
\$2.44 Complete



STEP LADDERS



... to make the job a lot easier!

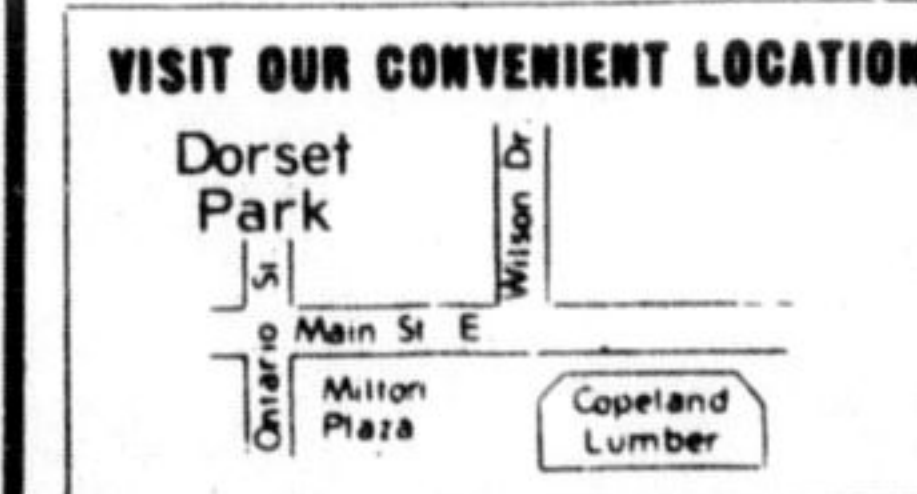
5' - \$13.95

COPELAND LUMBER MEMBER OF THE **BOLD** ORGANIZATION

700 Main St. E.

878-2351

FREE DELIVERY



"YOUR ONE STOP HOME IMPROVEMENT CENTRE"

For Your Shopping Convenience

NEW STORE HOURS

Mon. to Thurs. 8-6
Friday Evening 11-9
Saturday 11-6

Starcraft Camper Sales

Sports Travel Homes Ltd.
No. 6 Hwy. 1/2 Mile North of Guelph
PHONE 824-5329
OPEN Mon. - Fri. 9 a.m. - 8:30 p.m.
Sat. 9 a.m. - 12 Noon - Closed Sundays.

Your new Starcraftsmanship Headquarters

Citation Motor Homes & Trailers
Triple E - Travelaire Trailers
New & Used

"Lou" says don't stand on your money, with all the crashing SALES going on at his place . . .

5000 BTU Air Conditioner Only \$150.

FREE! PHILLIPS PORTABLE RADIO
With Every \$100 You Spend in Merchandise You Receive a Swinger AM Radio. With Every \$200 you Spend in Merchandise You Receive a Player AM Radio

NADALIN ELECTRIC
Sunny Manufacturing & Lighting Ltd.
878-4111 TORONTO 826-1223
3153 STEELES AVE., W. MILTON