

Hostesses elect new slate

The 4-H Nassagaweya Hostesses had their first meeting on Feb. 19, 1974 at Mrs. Dillon's. The 4-H leaders are Mrs. Dillon and Mrs. Hiest. They had their election of officers: president, Jody Jackson; vice president, Cheryl Buchanan, secretary, Cheryl Hokanson; treasurer, Irene Kidd; press reporter, Lila Dennis. The other members are Lori Dent and Debra Daigle.

Members discussed cereals for everyday eating and Lila Dennis demonstrated fry-pan cookies. For the second meeting Debbie Dent and Penny McMillan joined us. We also chose our name at this meeting as the Nassagaweya Hostesses. A quiz was held. Lila Dennis and Irene Kidd demonstrated onion rice and dog wafers.

At their third meeting members cooked cherry bran squares and discussed general desserts and an achievement day exhibit.



4-H LEADERS in Halton County prepare for March organizational meetings. Front from left are Murray Harris, Glen Copeland, Evelyn Gillies, John McKinnon, Mac Armstrong and Bob Lasby. Back, Jim Licock, Ken McNabb, Jeff Nurse, Bob Merry and Art Lawson. (Photo by J. Beaton)

4-H leaders once members themselves

A total of 115 years of leadership experience is tied up in the 22 4-H leaders in Halton County. They are men and women with interests in everything from livestock to field work and beyond.

According to Mac Armstrong, co-ordinator of 4-H activities in Halton, they are people of many talents, the greatest ability being that of communication with the young people who will one day be leaders of our community.

"A number of our leaders were 4-H club members themselves and they realize the value of the training they received. Because of their experiences they are better able to conduct a meeting and guide future leaders," he said.

Learn to Do by Doing is the motto of a 4-H member. The leader's function is to guide and assist the members in

achieving this aim.

Urban The leaders are a varied group, not all with the same interests or background. George Swann of Milton and Nino Braida of Acton are both urban dwellers who have worked as 4-H leaders for over 15 years. Mr. Swann is responsible for the Halton 4-H Veterinary Science Club and Mr. Braida, the Acton 4-H Calf Club.

Many outstanding livestock breeders in Halton are leaders: Jeff Nurse, President of Halton 4-H Club Leaders Association, from 4-H all breeds dairy club, Rock Ella Jersey Farms; Ken McNabb, dairy calf club, Guernseys; John McKinnon, beef club, Shorthorn; Evelyn Gillies, beef calf club, G. & E. Hereford Farms; Albert Hunter, sheep breeder; Stan May, Belgian breeder.

New leaders in 1974 are Doug Gardhouse, a recent graduate of the University of Guelph and a Halton County farmer, sheep club; Murray Harris, champion dairy judge at the 1973 Royal Winter Fair, a farmer and leader of the livestock judging club.

Other leaders include: Larry Bennett, Holstein club; Lorne Ella, all breeds dairy calf club; Don Harris, sheep club; Bill Jackson, beef calf club; Carl Middlebrook, veterinary science club; Allison Amos, veterinary science club; Bert Stewart, Holstein calf club; Glen Copeland, beef calf club; Bob Lasby, calf club; Jim Livock, dairy calf club; Bob Merry and Art Lawson, field crops club.

The reward for 4-H leadership lies in watching members grow as an asset to the club, the community and the country. Their motto says it all: "I pledge my head to clearer thinking, my heart to greater loyalty, my hands to greater service, my health to better living, for my club, my community, and my country."

On March 20 people between the ages of 10 and 21 will sign up for 4-H work at an afternoon session to be held in the Agricultural Hall at the fair grounds in Milton.

Champion Farm Page



NAMED GRAND CHAMPION Dual Purpose Shorthorn female at the recent Royal Winter Fair was Morlock Daisy 12th. She was also first in the class for three-year-olds. Owner Clarence Peacock of Morlock Farms, Milton is pictured at right with judge Fred Fry and Lassie Queens Nancy Brown and Nancy Ulrich.

Farmers discuss tax and market

by Henry J. Stanley
Sheep producers from Halton and Peel met on Saturday afternoon, March 9 at Master Feeds Research Farm, R.R. 2, Georgetown. Henry Stanley, Agricultural Representative, discussed income tax with special emphasis on the new livestock inventory rules and the tax credit section.

Don Stevenson, Ontario Sheep Specialist, stated that 50-60 lb. lambs on the Toronto market have been averaging from 87-90¢ per lb. With a great increase in the cost of feed this year, the price of Easter lambs must be considerably higher than last year, in the \$45-\$50 range per lamb.

Performance testing
The Ram Test Station at Kemptville has 128 lambs enrolled from 23 breeders. One hundred breeders across the province are on performance testing of their flocks. A ewe retention plan has been proposed by the Canadian Sheep Council where all producers would receive \$15 for each yearling ewe retained in the flock. This

is an attempt to increase the size of the Canadian sheep flock. This has not been approved to date by the Federal Government.

Jim Myslik, Engineering Extension Specialist, discussed sheep housing. A panel discussion on "Dollars and Cents in Sheep" was conducted with members Henry Stanley, A. G. Hunter, Burlington and Cy Lowden, Cedarmains Farms, Bolton. The points considered to be of most importance for profitability by the panel members were feed costs, labor costs, advertising, cleanliness of feed, water and sheep, avoiding overcrowding and number of lambs living per ewe.

Jay walk

An icy walk along the Bruce Trail was enjoyed by several members of the Toronto Bruce Trail Club Saturday. They walked from the 10th Line Esplanade to Highway 7, led by Bob Wharry.

Starcraft Camper Sales

Sports Travel Homes Ltd.

No. 6 Hwy. 1/2 Mile North of Guelph
PHONE 824-5329

Your new **Starcraftsmanship Headquarters**

Citation Motor Homes & Trailers
Triple E - Travelaire Trailers
New & Used

\$100,000 PUBLIC SALE

Giant Removal Sale

Color TV, Components Slashed

TV's, COLOR TV'S, STEREOS ALL SLASHED

SENSATIONAL PRE-SEASON CLEARANCE SALE

PERSONAL PORTABLE So light a child can carry 88.00	STEREO CONSOLES From \$98.00	SYLVANIA 19" PORTABLE \$149.20	PHILLIPS 23" with UHF \$159.00
--	--	---	---

★ PRICES SLASHED ON ALL COLOR TV ★ BLACK & WHITE ★ STEREO & HI-FI ★ COMPONENTS SLASHED ★ NO MONEY DOWN

AND LOOK! NO PAYMENTS UNTIL MAY, 1974 ON AN EXTENDED TERM PLAN

See Us For ★ PANASONIC ★ QUASAR ★ PHILLIPS MODULAR 4 ★ SYLVANIA ★ WESTINGHOUSE ★ ELECTROPHONIC ★ ETC.

SYLVANIA 26" COLOR WITH TRADE..... \$488.00	SYLVANIA 19" COLOR WITH TRADE..... \$366.00
100% SOLID STATE COLOR TV'S With Remote Control \$459.00	No reasonable offer refused Yes - No payments until May 1974 on an extended term plan

COUNTRY PETE

Joins forces with **FARMER JACK**

To enable them to r-e-a-l-l-y **SLASH PRICES**

PHONE TONIGHT DELIVERY TONIGHT
878-2373
826-5371

OPEN SUNDAY 12 to 6
Weekdays 10 to 9
Saturday 10 to 6

HWY. 25 JUST NORTH OF HWY. 401

New garbage methods

Funds from the Ministry of the Environment must be channelled into researching new ways of garbage disposal, according to the Ontario Federation of Agriculture.

The farmers' lobby group called for the research funds in its annual brief to the Ontario cabinet. The Federation also asked that sizeable loans and tax incentives be given to municipalities researching or building recycling plants.

The brief points out that each person now produces about five pounds of garbage daily. At the turn of the century, the rate was less than two pounds a day.

The policy paper also notes, "The problem is multiplying and with it the necessity for effective and realistic action. Several cities have been scouting for a countryside garbage dump during recent months."

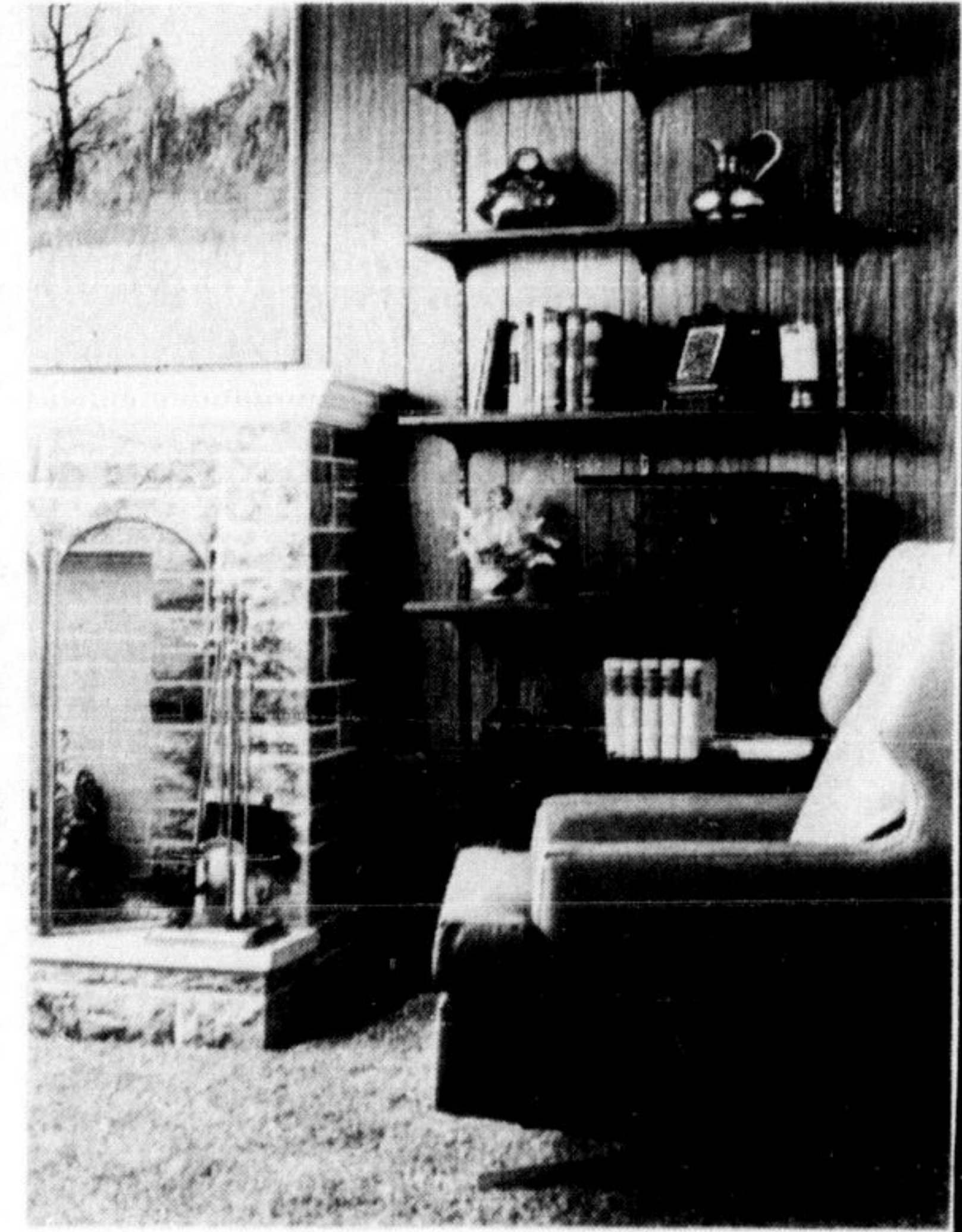
The Federation placed the responsibility on the provincial government to make sure municipalities dispose of their refuse within their own boundaries.

COPELAND LUMBER

Can help you with the finishing touches!

SHELVING Ready for your imagination

The beautiful, economical answer to do-nothing walls. Handsome shelving that can transform a dull, blank wall into an exciting focal point. Easy-to-put-up shelving that can turn clutter into neat, organized storage. K.V. shelving comes in a variety of great finishes. Choose one that contrasts with your walls, or one that blends right in. K.V. shelving is so simple to put up. You'll go from bright idea to finished project in no time at all. K.V. standards and brackets come in so many versatile sizes that interesting arrangements come easily. Come in and pick up your free idea pamphlet. Turn your imagination loose and see what you can dream up!



"SPINDLEFLEX"

The Versatile Do-It-Yourself Furniture.

Get your free copy of 25 Twist-Together Ideas and start putting your ideas together.

A beautiful addition to any room!

KITCHEN STORAGE AIDS

YOUR PRACTICAL ANSWER TO AN ORGANIZED KITCHEN

Solve your kitchen storage problems for good with a:

- Disappearing Towel Rack
- Disappearing Cup Rack
- Disappearing Waste Basket
- Disappearing Pan Racks
- Utility Hooks
- Garment Hooks

Which one of these will help you solve your kitchen storage problems? Come in and make your choice.

Make your own **K-Lux** room divider

Elegant 2'x6' K-Lux plastic panels in a wide variety of colors and designs. Rich contoured, furniture-grade hardwood frame. Use ordinary household tools. Easily adapts to ceiling heights up to 106". Pre-finished, simple to assemble. We have the complete package.

COPELAND LUMBER

MEMBER OF THE BOLD ORGANIZATION

"YOUR ONE STOP HOME IMPROVEMENT CENTRE"

700 Main St. E. **878-2351**

FREE DELIVERY

VISIT OUR CONVENIENT LOCATION

NEW STORE HOURS!
Mon. to Thurs. 8 to 6
Friday Evening 'til 9
Saturday 'til 6