

Martin St. plans winter carnival

A week of winter fun is planned for the students at Martin St. school. Their winter carnival will run from February 8-14 and will include indoor and outdoor activities.

A prince and princess will be chosen from 12 students to reign over the week. Voting will take place February 8. Those in the running are Don Habbirk, Judy Willoughby, Randy McDonald, Jim Cartwright, Tracey Condron, Kathy Eakins, Eric Ellison, Corie Gervais, Letti McNeill,

Kevin Smith, Joanne Tripp and John Loeprich. Participants have been chosen because of their participation, citizenship, and leadership displayed in school activities.

Contests rank high in the week's fun with a big bowl of smarties waiting for someone to guess the right number, and a photo contest where teachers have submitted their baby pictures for students to guess which is

which teacher. The student council will run these events and name the winners at the evening dance on Valentine's Day, February 14. Winners get to eat the smarties.

The afternoon of February 14 will be divided between a skating carnival at Milton Arena and films on winter sports shown at the school.

Throughout the week an art display in the school will depict snow carnival scenes. Sixteen snow sculptures, one for each reporting room, will be judged.



ONE BOY AND GIRL will reign as princess and prince of the Martin St. School winter carnival from Feb. 8 to 14. Contestants from left are Don Habbirk, Judy Willoughby, Randy McDonald, Jim Cartwright, Tracey Condron, Letti McNeill, Eric Ellison, Corie Gervais and Keven Smith. Missing are Joanne Tripp and John Loeprich.



"I KNOW HER" says Judy Willoughby, treasurer of the Athletic Council, as she and secretary Lori Cameron, left, and co-chairman Mike Ellis try to guess the teachers' baby pictures for the Martin St. school winter carnival. (Photos by J. Beaton)

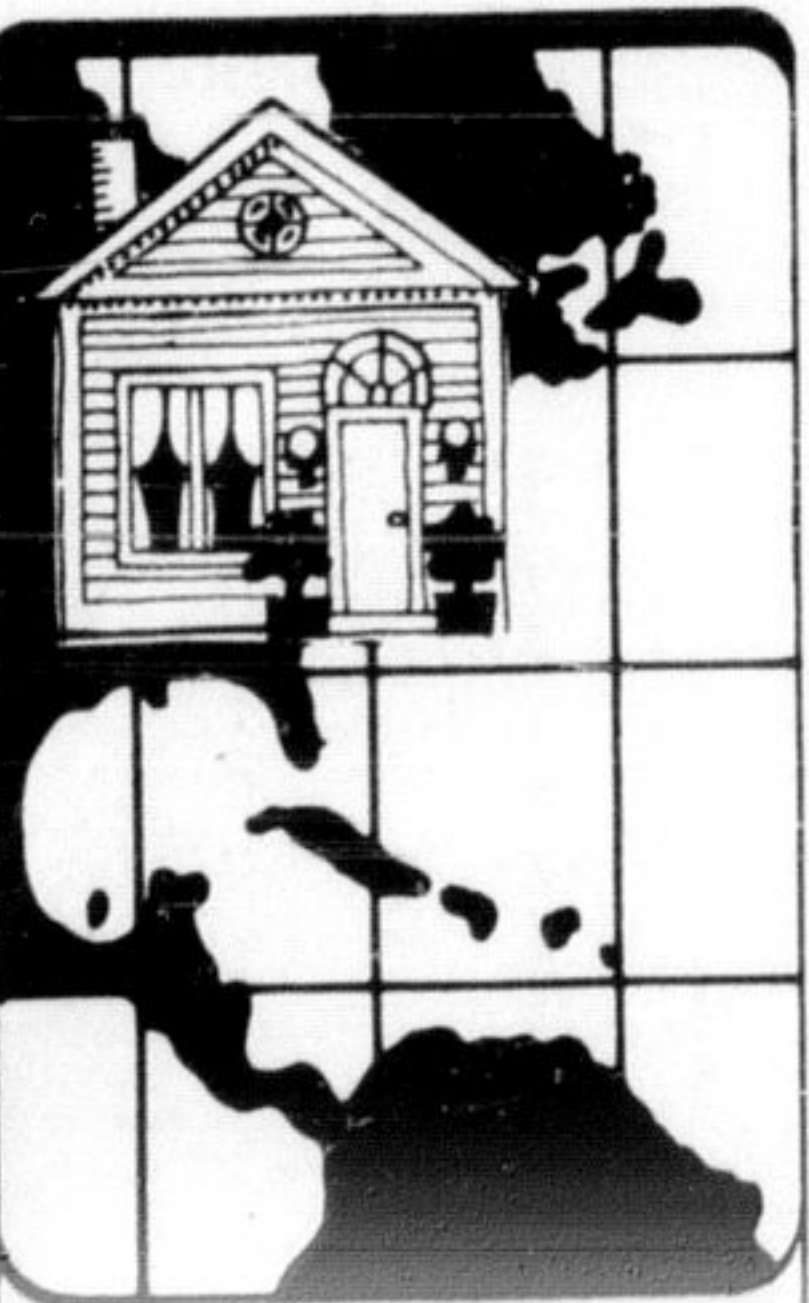
—Support Milton's Winterfest, participate this weekend.

FABIAN

Fine Furniture

AT FACTORY TO YOU PRICES

MILTON PLAZA



Wherever you move... Call the Welcome Wagon hostess. She will bring her basket of gifts and friendly greetings from civic and business neighbors of the community.

WELCOME WAGON
MRS. JANE HUGHES
HOSTESS 878-2665

Milton School of Driving

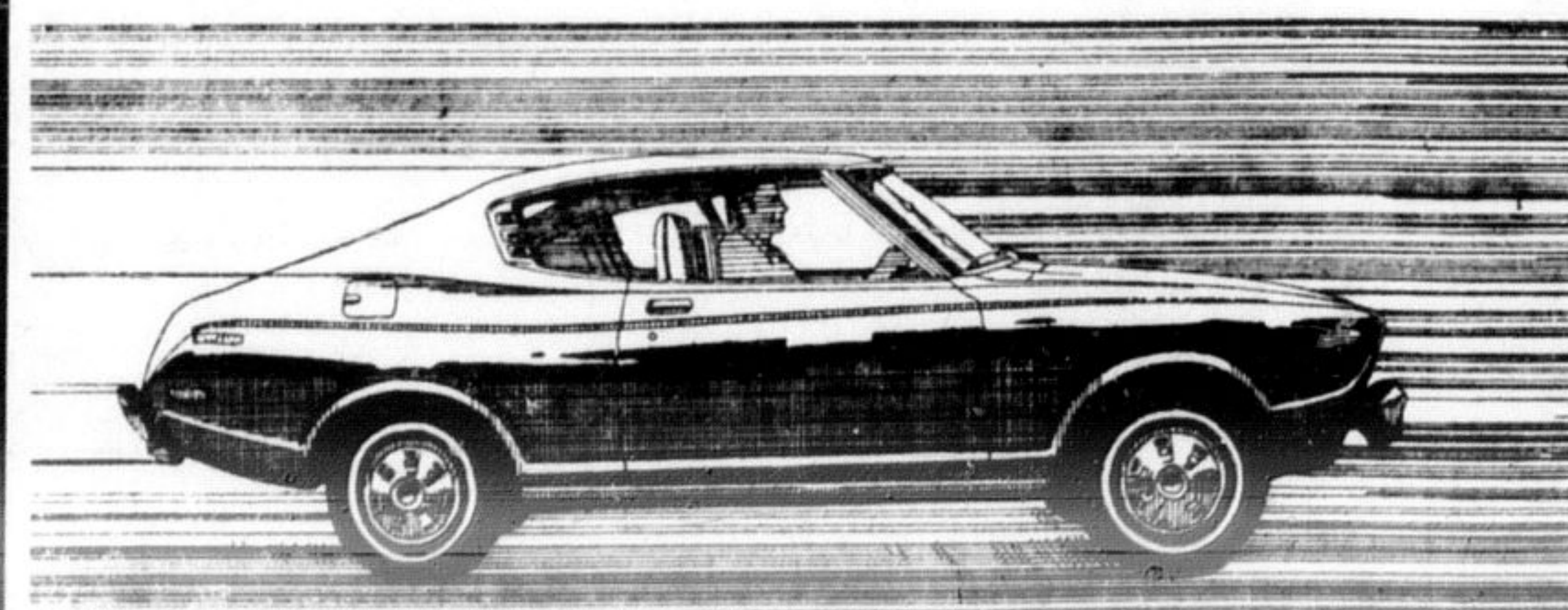
D.O.T. O.S.L.

Approved Instructor

Dual Controls. Fully Insured

CALL GEO. BAIRD 878-4018

DATSUN'S NEW 710



IT'S A BEAUTY, TEST DRIVE IT TO-DAY

NORTH END DATSUN

610 Martin St.

• Just South of 401

Milton 878-2471



KEEPING TRACK of stock while Howard Schyler training to gain on-the-spot experience at Home Hardware on the weekend. counts is Lyn Mountain. She is one of the students from MDHS who used her business machine (Photo by D. Pink)

Business students get on the job training

Five business machine students from Milton District High School spent their weekend in the basement of Home Hardware Milton Plaza. They were assisting manager Larry Schyler with his inventory taking.

The students Lynn Andrews, Karen Mayer, Lynn Mountain, Janet Perrott and Annette Vandevalk, have finished their second year in machine math. They were given the opportunity to have on-the-job experience as they tallied up the thousands of parts that must be counted each year.

Liaison Marjorie Powys, director of the school's commercial department, said she feels there is good liaison between the school and businesses in Milton. "The Chamber of Commerce has just been wonderful" she says, explaining the co-operation she has received when trying to

—Champion classifieds are your best advertising bargain. Call 878-2341 and place your ad early for next week's issue.

arrange for practical experience for students.

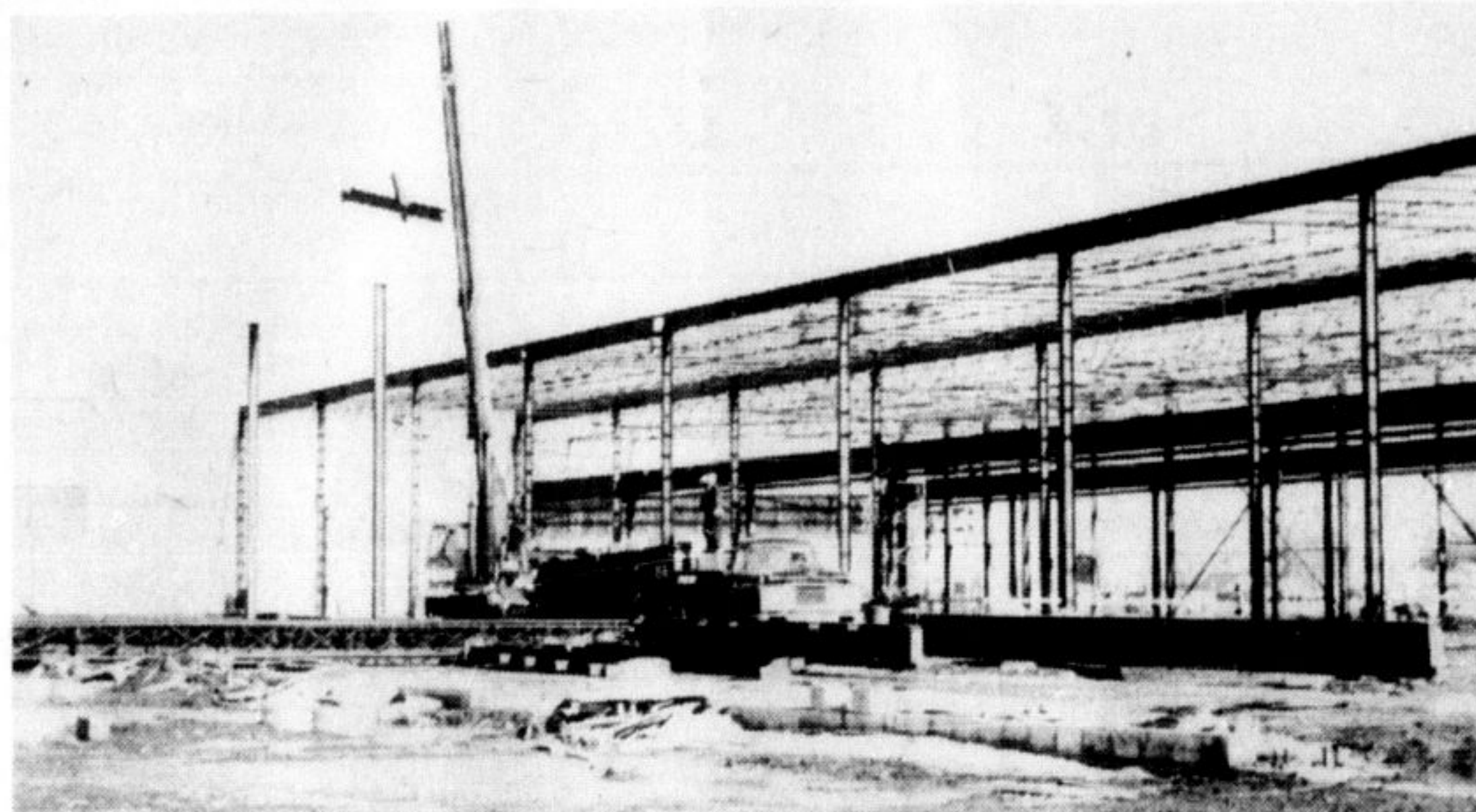
MILTON TELEPHONE ANSWERING SERVICE

- CONFIDENTIAL
- COURTEOUS
- PERSONALIZED

878-2020

SEVENTY-SEVENTH IN A SERIES

A Mark of Progress in Milton



Steelwork shapes the outline for the \$3,000,000 expansion project at Rockwell International where a 72,000 square foot addition is going up. Expanded employment opportunities will be provided as the firm's Oshawa spring plant is located here. The addition to the original plant, established here in 1954 is a further mark of progress for Milton.

For a progressive Insurance Programme at competitive rates contact...

McCuaig INSURANCE LIMITED

208 Main Street E., Milton 878-2894

Provide varied housing

Burlington Planning Director Robbie Roberts told the regional planning committee at a meeting Wednesday of a concern about the increasing trend that sees Burlington becoming more of a bedroom community.

The director said that Burlington falls under the influence of Toronto and Hamilton to a great extent. He recalled discussions that took place while developing an official plan.

According to Roberts many of the people who work in the manufacturing industries cannot buy a home in Burlington. He said many had to go to Hamilton and some to Oakville.

Roberts said there was definite relation between the type of housing available in a community and the eventual development of a bedroom

community. He said Burlington had tried to overcome the influence from Toronto and Hamilton by providing a variety of housing and by providing job opportunities not far away from home. He noted the rebuilding of downtown core wasn't very feasible because of its proximity to Hamilton. A new hub for the business section has been established in the Burlington Mall area. Roberts noted this development had brought considerable amount of business back to Burlington.

POLLOCK AND CAMPBELL

Manufacturers of High Grade Memorials Memorial Engraving

Telephone 621-7580 GALT 62 Water St. North

SALE

FINAL 3 DAYS

THURS. - FRI. -SAT.

St. Clair

the paint and paper people

SHOP THURSDAY & FRIDAY TILL 9 P.M.

MILTON PLAZA 878-2629

FORD RENT-A-CAR SYSTEM



- * CORTINAS
- * COMETS
- * METEORS



AND GO IN STYLE

For Carefree Motoring Pleasure... For a Day! a Week! a Month! a Year! Drop in and see us. Our Economy Rates Include, Gas, Oil, Insurance

— SPECIAL WEEK-END RATES —

12 FOOT VAN ALSO AVAILABLE

GALLINGER MOTORS LIMITED

MILTON PLAZA MILTON 878-2883

Streetsville 826-1434

February 14 ONLY

THURSDAY BUCKET SPECIAL

When you buy a bucket or barrel of Kentucky Fried Chicken at the regular price, we'll give you the fixins, FREE!

- ✓ Family Pack of French Fries
- ✓ 16 fl. oz. of Creamy Cole Slaw
- ✓ A loaf of Grecian Bread



Kentucky Fried Chicken

Colonel Sanders and his boys make it "finger lickin' good"

chicken Villa

Main and Commercial MILTON 878-4171-2