

## Higher taxes, hard work promised at Milton Council inaugural meet

Mayor Anne MacArthur promised taxpayers higher taxes and her council and staff hours of hard work and some frustration as she delivered her inaugural

address to the first meeting of Milton Council under regional government Monday. Mrs. MacArthur reminded the 100 present for the formal swearing-in of councillors,

that "the area, sprawling out like a boot, is the child of the province". She noted the province went contrary to the recommendation of her county council in creating

four area municipalities rather than the three. "The province will have to give special consideration to this child if it is going to survive as an economic unit

without bringing the rate-payers to their knees," the mayor stressed. **Treasurer, planner** She reviewed that the new council had added a treasurer

to the municipal staff and was seeking a planner. Regarding the growth of the town she described it as phenomenal. "How good it is or how bad, I'm not prepared to say".

## Formal swearing-in for council

The inaugural meeting of the council that will serve Milton, now expanded to 135 square miles and 17,900 people, was held Monday amid the formality of a swearing-in ceremony and the informality of a gathering of more than 100 citizens at the conclusion.

Judge Alan B. Sprague administered the oath of office and the oath of allegiance to Mayor Anne J. MacArthur, placing the town's new chain of office around her neck. The chain includes replicas of the historic crests of the five municipalities which have been embodied totally or partially in the new bound-

aries of Milton.

Autumn Watson presented red roses to Mrs. MacArthur after her swearing-in.

Deputy Clerk Campbell Thompson presided for the opening of the inaugural which also included the swearing-in of regional councillors Mrs. Marjorie Powys and Jim Watson and ward councillors Brad Clements, Rick Day, Don Gordon, Ron Harris, Jim Kerr, Gord Krantz, Art Melanson and Russ Powadiuk.

**Ministers assist** The prayer of invocation was given by Father J. Murphy. Rev. J. Lowry addressed the meeting and gave

the closing prayer.

Rev. Lowry commended to the council the five stage model for problem solving which included definition of the problem, delineating the alternatives, examining the consequences of each alternative, establishing a decision rule and finally deciding. He called on members to keep the lines of

communication open, seek out the quieter voices of the community and know what you believe and why.

"You decisions will reflect the collective integrity of this council," he suggested as he urged members to take the responsibility of making decisions "and the loneliness." Presentations were made

to Judge Sprague by Councillor Ron Harris, to Father Murphy by Councillor Powys and Rev. Lowry by Councillor Jim Watson.

**Name staff** In a series of by-laws the council, officially enacting its first business, appointed Jack McGeachie as clerk, Campbell Thompson as deputy

(Continued on Page 7)



A NEW CHAIN OF OFFICE for a new mayor of a new town. Judge Alan Sprague places the chain of office on Mayor Anne MacArthur at Monday's inaugural session of the new Milton Council. The chain was designed to incorporate crests of Halton, Milton, Nassagaweya, Nelson, Esquesing and Trafalgar.

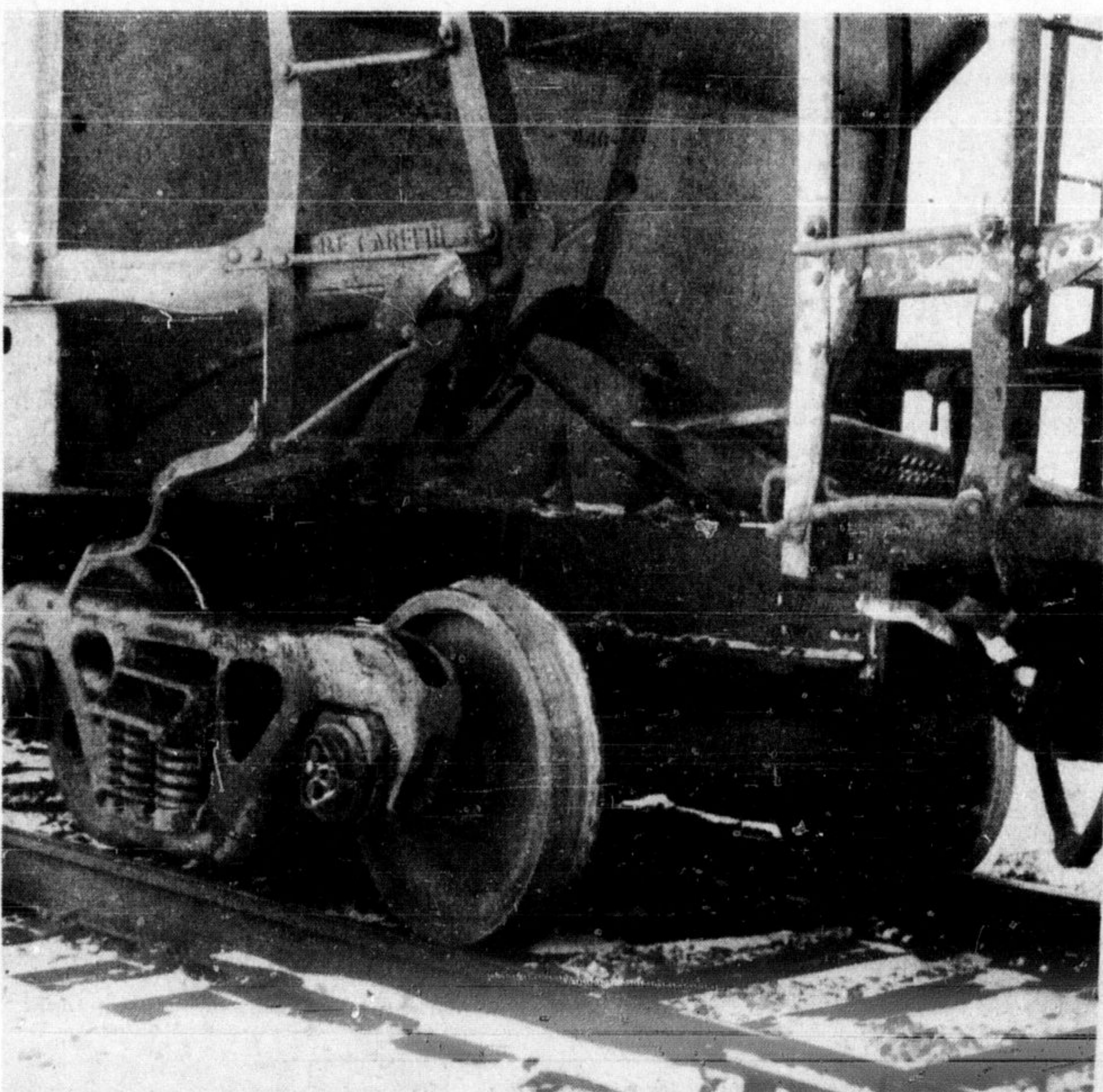
(Photo by R. Downs)



A CROWD OF OVER 100 was on hand Monday to witness Milton Council's inaugural meeting and swearing-in ceremony. Councillors are pictured around the U-shaped council desks with the crowd ringing them. It was an impressive formal ceremony the 1974 council held Monday, followed by the serving of refreshments in the committee room. The new council's first official business session is next Monday night.

(Photo by S. Dills)

## Asks provincial inquiry into warden's dinner cost



DERAILED AND TWISTED, the front end of an empty gravel car axed railway ties and drew a gouge in the gravel for about 500 feet after colliding with a truck on Derry Rd. The truck struck the fourth car of an 81-car southbound train at approximately 1 p.m. Monday afternoon. A signal light at the intersection of Derry Rd. and the CNR was totally destroyed while damage to the Union Pacific railway car was limited to the gnarled metal.

(Photo by D. Pink)

The provincial government has been asked to conduct an investigation into the affairs of the 1973 Halton County Council, in particular the overspending on the warden's dinner held in November. The dinner was held to honor 1973 Warden Anne MacArthur and its final cost exceeded the budgeted figure of \$1,500 by \$2,424.

It was the second year in a row that the \$1,500 budget was overspent and it is the second year in a row that Milton businessman Gus Goutouski has protested the spending.

This year Goutouski carried his protest to former Warden MacArthur and to the Treasurer and Minister of Economics and Intergovern-

mental Affairs, John White.

50 signatures Because there has been no response to his letters, Goutouski has consulted an attorney and has circulated a petition requesting the investigation. Signatures of 50 residents and taxpayers are necessary before the request is considered at Queen's Park today (Wednesday).

In his letter to John White, Goutouski refers to a letter from Mrs. MacArthur early in 1973, promising that if a dinner was held in her honor it would be done within the budget established.

In an interview Goutouski said the councillors from the 1973 county council should dip into their own pockets and

(Continued on Page 13)

## Rules planting strips needed

The Ontario Municipal Board has ruled that provision for planting strips between residential and commercial properties in the development zone should remain.

The Town of Milton had applied to amend its zoning bylaw so the planting strips on the side yards of commercial properties abutting residential properties would not be required.

Several residents of Main and Mary Streets objected to the passing of the amend-

ment. They feared commercial buildings would be built right up to their property lines.

In handing down the decision OMB member A. H. Arrell said it was difficult to tell how long it would take for the area along the east end of Main St. to change from residential to commercial.

**Creates alleys** He noted some alley ways would eventually be created between commercial buildings if the amendment

(Continued on Page 13)

## Former mayor Brian Best Chamber's "citizen of year"

Brian Best, who has just completed six years as mayor of Milton and 11 years on the town council, has been named Milton's Citizen of the Year for 1973.

Milton Chamber of Commerce directors announced his choice for the town's top honor on the weekend, after reviewing ballots submitted by many citizens from a newspaper advertisement. The Chamber will honor Brian Best at a testimonial dinner at Roma Social Club on Wednesday, Jan. 30.

A resident of Milton since 1955, Best is president of Best Realty and Insurance. He and his wife Freda and three sons live on Appleby Line on the escarpment.

**Here since 1955** Born in England, he was educated there and qualified as an engineer in 1952. He moved to Canada in 1954 and worked in the aircraft industry in Malton until 1959 when Avro Aircraft closed down, then he founded his real estate and insurance business here. The Bests have lived in Milton since 1955.

He was qualified as a professional engineer in Ontario in 1954.

In 1958 and 1959 he was a trustee on Milton Public School Board. Active in Milton Chamber of Commerce for several years, he was its president in 1962 and headed up the Old Fashioned Days celebration. He ran for office

as a councillor in 1963 and continued as a councillor until he was elected mayor in 1968. Best continued to serve as

mayor until the end of 1973 when he was defeated in his re-election bid by Anne MacArthur.

**Overwhelming** Chamber officials report the nomination forms were overwhelmingly in support of Brian Best for the "citizen"



BRIAN BEST Citizen of 1973

citation. A few other local residents were also nominated and their names will be kept in mind for future awards, the Chamber executive reported.

Tickets for the Jan. 30 dinner and presentation are now on sale at \$15 per couple.

## Call inquest Feb. 5 in snowmobile death

Coroner Dr. Donald Aikenhead of Milton has ordered an inquest into this area's first snowmobile death of the year - a collision between a train and a snowmobile at Kelso Conservation Area Dec. 18 which claimed the life of a Campbellville man.

The inquest will be held Feb. 5. Kenneth M. Pasuta, 23, of Campbellville was killed and Robert Harris, 21, of R.R. 6, Milton was injured when the snowmobile on which they were riding struck a train on the CPR line through Kelso Conservation Area. Both were employees of Glen Eden Ski Club.

An earlier report indicated Harris was the driver of the snowmobile but at this point it is uncertain which man was driving.

## Break-in No. 18

## Safe job fails

It wasn't too unusual for Mac Hunter, manager of Halton Truck Sales and Halton Toyota to go to work Monday

morning and find someone had attempted to crack open the company's safe.

This was the 18th break-in

since the firm started keeping a record of break-ins in October of 1964, a little over nine years ago. "It's just another in a long series of break-ins," he said resignedly. "There have been at least 18—we didn't keep a record before 1964."

Thieves weren't successful in opening the 1,300 pound safe, but they did a fair amount of damage to the door of the safe. The combination dial had been knocked off and an attempt had been made to drill into the safe, but it held fast and the intruders left without a cent for their efforts. The safe manufacturer, John Tann Co. of Milton, removed the safe for repairs.

**Successful** The last time the car and truck agency was broken into, thieves were well rewarded for their efforts. Last July a break-in netted the thieves \$2,750 when they cut the whole front off an earlier safe. And they used a torch stolen from the truck shop to cut it off.

Some of the break-ins have yielded tools and truck tires to the intruders, sometimes they got nothing for their work. But Hunter says the last few break-ins appeared to have been for money only, and nothing else was taken. Some of the losses were insured, some not.

Almost all of the break-ins have been on weekends, and during the night, he said. Management has tried to thwart further thefts by special locks on the doors and by blocking off the back windows in the shop—but they find other ways to gain forceful entry.

**Difficult to see** Although the safe sits near the front door and a large showroom window is in plain view of passers-by, the agency is located some distance back from Highway 25 just north of Highway 401 and it would be difficult to see intruders from the road.

Hunter says 1971, 1972 and 1973 were the worst years for break-ins, with three re-

(Continued on Page 7)



THE 18TH BREAK-IN in nine years at Halton Truck Sales and Toyota north of Milton Sunday night netted thieves nothing but caused a lot of inconvenience for the company. Intruders tried to smash and drill open a safe but were unsuccessful in their efforts. Employee, Judy Petherick shows the broken combination dial and damaged door of the safe.

(Photo by R. Downs)