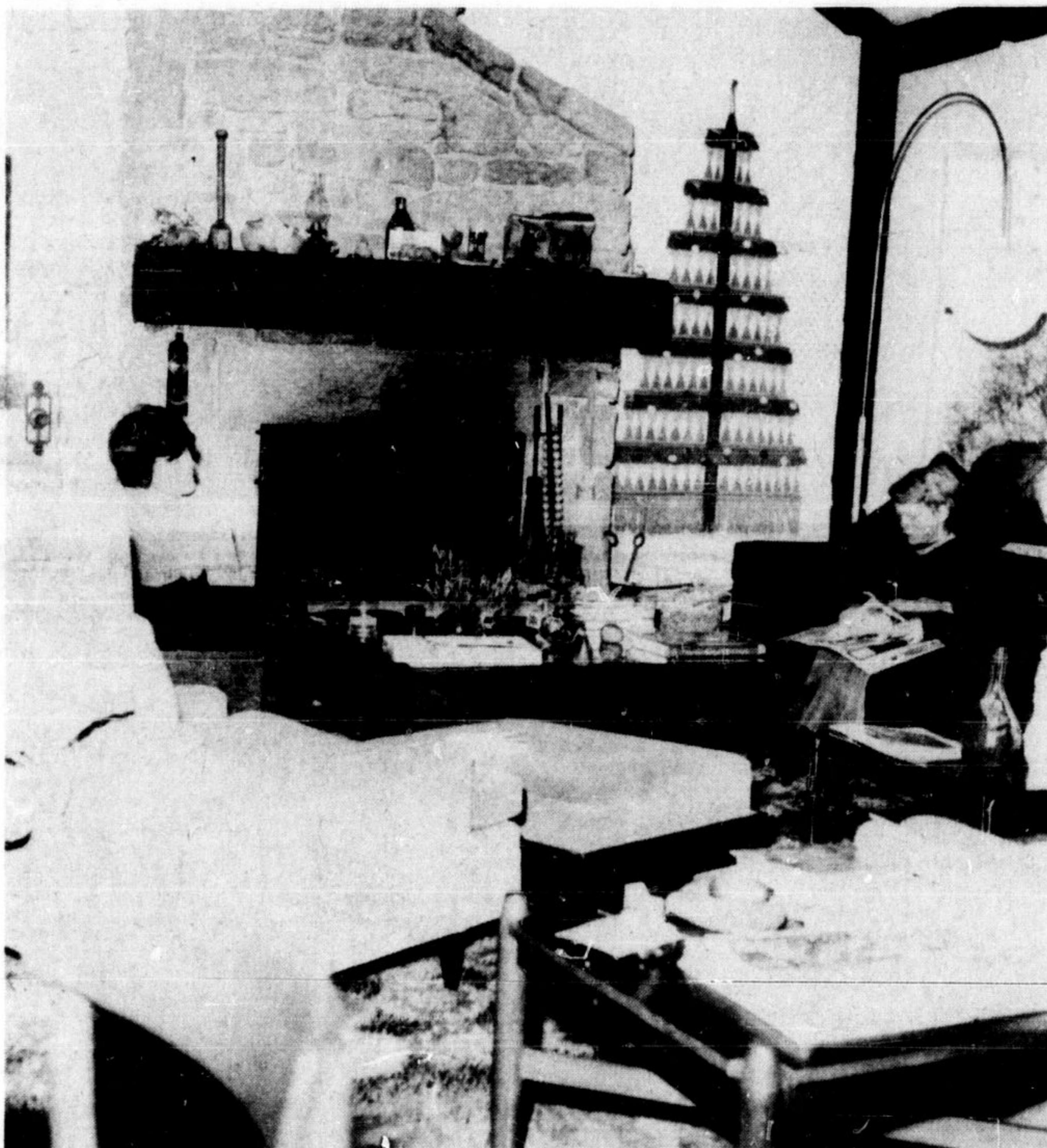


## Anna Spencer "retires" to Double Bear Farm



OLD AND NEW are combined in the Spencer kitchen. Here Anna examines her wood supply to keep the old stove going to conserve oil this winter.



THE FIELD STONE fireplace with its beam mantle blends nicely with the modern living room furniture. Anna and Timothy sit either side of the square coffee table Anna designed, called an "executive sand box".

Double Bear Farm is the home of Anna Spencer and her two sons Benjamin and Timothy. Bought by Anna a year and a half ago it was named Double Bear, not because of the wildlife on the Mountsberg road, but because of Anna's love for teddy bears.

Anna moved to Canada from her native England 23 years ago. She has worked in the TV department and in print production with an advertising agency, has been marketing director for Claritone, was director of public relations for the Constellation Hotel where she supervised the interiors of the new eight million dollar expansion, and did the symbol for the Hudson's Bay trucks.

She and her former husband designed the major exhibits for the Better Living Centre at the CNE. They were the only non-architects to do a pavilion at Expo, using Anna's concept to design the Western Canada pavilion.

**Restoring house**  
Leaving her busy background she has decided, at a very young age, to "retire" to the country. She chose the property in East Flamboro because she loved the rolling land with the stone house sitting far back from the road. There are two ponds on the 30 acres with many varieties of large aged trees. "We have made the house liveable at present," Anna says, "but in the future we hope to restore it to its original state."

The original state is a little difficult to determine. Former owners know the house to be over a hundred years old. One of the original owners was a man named Marshall Haines. In 1918 it was bought by Matthew and Ada Harris who lived there with their family until 1950. During that time the barn and house both burned. A new barn was built and the house restored to liveable condition. The rebuilding of the house was a

drastic renovation of the original to lower the ground floor ceiling height in order to provide better headroom in the half storey forming the first bedrooms.

**Architecture**  
Anna is anxious to restore the house to its original state before the fire and has hired Peter John Stokes, the architect who designed Upper Canada Village, to do the

Story  
and Photos  
by  
Joyce Beaton

work. In his appraisal Mr. Stokes states, "On the far end the original stonework can be seen and the size of the original windows are clearly visible. There are signs here of a previous side addition which may have been a lean-to shed extending to the front or an over-lapping gable-roofed form projecting slightly forward. Windows in the wing are also replacements, but the roof lines appear to be close to the original, however devoid of any period detail such as cornice and eaves returns."

Mr. Stokes is happier with the restoration of the inside of the house, referring to it as having been adapted "with great delight and comfort." He approves of the work Anna has done with interior decorating and design.

A side entrance leads into what is now the Spencer living room. At one time it housed the summer kitchen and a bedroom, then was used as a wood shed, and when the immediate former owners, the Robert Hurrens were there, it was a family room.

### Rustic wall

The stone wall attaching the living room to the main body of the house has been left in its rough state. It provides a rustic background for a grain cradle and spinning wheel. A log burning stone fireplace covers the opposite wall. Modern and antique furniture are combined to create a warm and comfortable living area. A square coffee table of unusual design sits in front of the fireplace. Designed by Anna in 1967, it is called an "executive sand box" and is cut out in the middle to allow for stones or objects of art to be displayed. The table is illuminated around the bottom showing to advantage the wide pine board floors.

The dining area is furnished with table, chairs and cupboard designed by an old man in the Eastern Townships of Quebec. His name is Morrisette and he makes furniture the way it used to be made 100 years ago, using old pine boards from old churches in Quebec. "You can still smell the old churches in the wood," Anna claims.

Anna keeps an old wood burning stove in the modern kitchen and intends to use it this winter to ease the energy crisis. The kitchen is also a blend of the old and new with utensils of days gone by hanging from the rafters.

A study, bedroom and bathroom complete the downstairs. Upstairs are three more bedrooms, a bathroom, and a most attractive landing.

**Serious farming**  
Anna and her friend Alex Hacker are planning to go into farming in a serious way. This past summer they raised Hereford cattle, reminiscent of the days when the Harris family grew hay, wheat, grain, and cauliflowers and shipped milk from their Holstein herd.

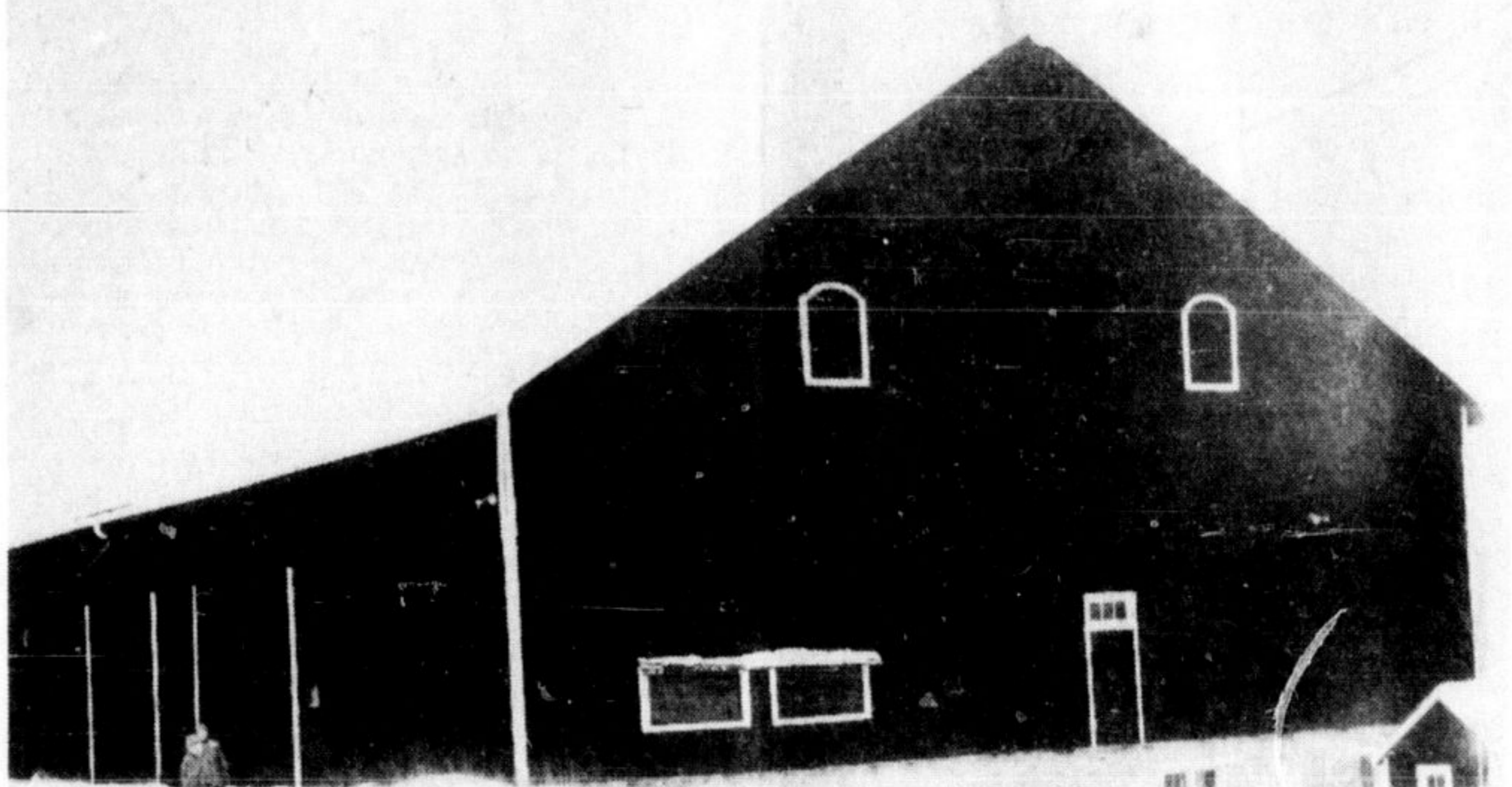
This spring a cattle expert, Robbie Robson of Eden Mills, Continued on page B3



FRONT VIEW of the century-old stone house shows how the original doorway with sidelights and transom was reduced to a single door of small proportions. Anna hopes to bring the house back to its original condition.



OLD PINE CHEST dating back to the middle of the 19th century is a prized possession of Anna Spencer. This was an evolutionary period from basic chest to chest of drawers. There is a drawer in the base of the chest and a lift-up top. (Picture by J. Beaton)



BIG BLACK BARN sits at the front of the Spencer farm. It will house an exotic strain of cattle from Limoges, France, called a limousin breed.



ANNA SPENCER and "Medde", a Hungarian Commodore welcome visitors at the side entrance to the house. Beyond the vestibule is the living room with its large stone fireplace.



GRAIN CRADLE and spinning wheel sit against the rustic stone wall of the living room. Benjamin trims the Christmas tree which fits so well with the decor.

### PUBLIC NOTICE

#### ANNUAL MEMBERSHIP

In the Milton District Hospital Corporation must be obtained on or before

**Monday, January 7, 1974**

In order to be eligible to vote at the

**Special meeting of the Corporation**

For the purpose of considering and approving the revised Hospital By-Laws on

**Wednesday, February 6, 1974**

Memberships may be purchased for \$5.00 at the Business Office of the Hospital Monday through Friday, 8:30 a.m. - 5:00 p.m. or by forwarding a cheque in the amount of \$5.00 to the Hospital.

**NOTE:** The location of the meeting will be published in subsequent notices in this paper.

A. H. Britton,  
Chairman,  
Board of Directors.