

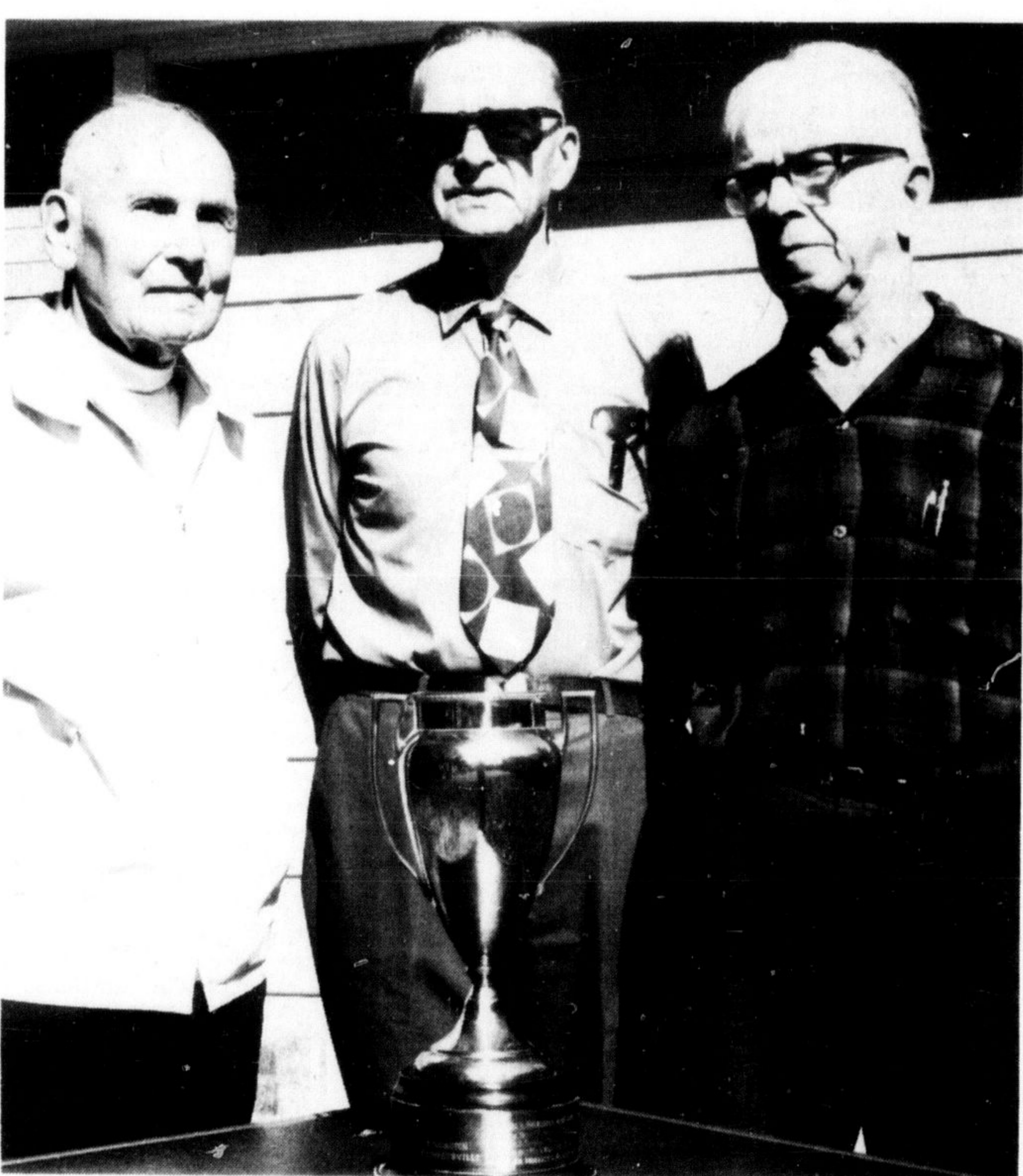


BATTLING for possession of the puck in front of the Streetsville Derby net in Junior "B" hockey action in Streetsville last Tuesday night. Flyer Bill Presniak and Derby Bill Watts engage in a stick swinging match as Flyer captain Harold Merry and Streetsville defenders look on. Milton outclassed the home team over the course of the game. (Photo by D. Pink)



A SIZZLING SHOT was thrown at Oakville's goalie by Harold Merry (9) as he scored Milton's first goal here Friday. Rick Bridgeman (11) who assisted on the goal, can be seen being ridden into the goal post by one of Oakville's players. The game was won by Oakville 5-2 after Milton got off to a late start. (Photo by S. Dills)

PRESIDENT
JOHN BLYTHE
BILL TALLYN
GERRY ARPA
CHUCK BEETON
BARRY BEETON
HUGH HAMP



RECIPIENTS of The Canadian Champion's lawn bowling trophy this year was the team of lead Harry Riddolls, vice skip Jack Elliott and skip Gear Sinclair. (Photo by D. Pink)

Interesting archeology found at Bronte Park

By: Ellen Langlands, Historian, Bronte Creek Provincial Park.

The Ministry of Natural Resources has completed an archeological and historical investigation of the area of Bronte Creek Provincial Park. The archeology survey has extended over the major portion of two summers and has produced some interesting 'finds'.

The primary archeological sites have been identified as relating to the archaic tradition and dating within 5,000 to 1,000 B.C. The sites at Bronte are considered to be of high information content as some of them have been left undisturbed by later human activity. Surface collection to date has yielded many prime examples of the flint work of this culture. It is anticipated that further interpretive

development at Bronte will include displays of the artifacts now in storage at the park.

In more recent history, the park reflects the rural development typical of southern Ontario. With European settlement, saw, grist and carding mills were established along the Creek in the park area. Later, the mills faded and the economy of the area shifted to general mixed farming. This later stage of development is still reflected in the landscape at Bronte.

Have old photos
 The orchards, spruce rows, weathered barns and secluded farm houses symbolize agrarian life as found in this area until the Second World War. The story of the farms at Bronte has been compiled into an historical report which was augmented with older photos loaned to the Ministry by concerned and interested residents of the area.

From the historical overview, it appears that the farm houses of the park area are symbolic of a variety of architectural styles. The houses at Bronte include a Regency-style cottage of the 1820's-1830's; a mid-century patterned brick house; and three examples of the ornately decorated high Victorian homes so common at the turn of the century. While the type and date of the houses are known, an architectural student will prepare an outline of the architectural features of the individual buildings this summer.

Study old house
 An in-depth study is also being carried out at the 1899 farm house, which is to be

WEDNESDAY NIGHTERS
 Oct. 3
 Ladies' high single Krina Dezeuw 340, ladies' high triple, Krina Dezeuw 674.
 Other good singles Leeni Boughton 260, Gloria Oswald 258, Maryann Kenny 242, Faye Wood 231, Leone Flarity 217.
 Other good triples, Mary Anne Kenny 649, Leone Flarity 624, Faye Wood 552, Leeni Boughton 588, Sandy Parsons 532.
 Leone's won 5 for 5, Bev's 0 for 7, Helena's 1 for 2, Pat's 3 for 4, Judy's 0 for 0, Leeni's 0 for 7, Sue's 3 for 12, Gail's 3 for 9.

Insure your winter wheat crop

JOSEPH STUTT
 6554 Tremaine Rd.
 R.R. 1, Milton
 (416) 878-6390

THE CORPORATION OF THE TOWNSHIP OF NASSAGAWEYA

NOTICE

Respecting assessment for 1974 taxation

The attention of all owners and tenants in the Township of Nassagaweya is drawn to the fact that Assessment Notices will not be mailed to all owners and tenants as in prior years, except to those who have had a major change in their assessment.

Complaints regarding assessment may be brought to the Assessment Review Court under Section 52 of The Assessment Act.

Any Notice of Complaint must be made in writing on forms available at the Township Municipal Offices, R.R. 1, Campbellville, or by letter sent by ordinary post to

The Regional Registrar
 Assessment Review Court
 713 Davis Drive, Suite 303
 Newmarket, Ontario

and by registered mail to any other person whose assessment is complained of; not later than the 31st day of October, 1973.

Assessment Rolls may be inspected at the Township of Nassagaweya Offices between the hours of 9.00 a.m. and 5.00 p.m., Monday to Friday.

Dated this 30th day of September, 1973.

S. W. Savage
 Clerk
 Township of Nassagaweya

FORD • TORINO • MUSTANG II • PINTO MAVERICK • THUNDERBIRD • WAGONS AND ALL FORD TRUCKS

DEPENDABILITY
 PINTO 2-DOOR SEDAN

SERVICE
 MUSTANG MACH 1

SATISFACTION
 TORINO

DON'T DELAY
THE IDEAL FORD FOR YOU IS WAITING AT TRAFALGAR MOTORS
 CO. LTD.
 409 MAIN ST. MILTON 878-2369

DISCOVER LONG JOHN'S SILVER... AND GOLD. WIN BOTH! A GOLD MONTEGO WAGON AND A SILVER MUSTANG II!

Offer ends November 5

Imagine a treasure like this! Two great cars as a first prize. That's right! One person will win both a 1974 Mercury Montego MX Villager Station Wagon and a 1974 Ford Mustang II Ghia! With every \$50 you deposit in a savings account at Canada Trust between October 9th and November 5th, you get an opportunity to win.* For example, deposit \$500 and you get ten opportunities. Our present customers can also participate by making new deposits.

Remember too, that your money will probably be earning more than it is now. So come on over! Canada Trust is one of the nation's oldest institutions, created even before Eaton's and Canadian Pacific. Yet you'll find we're well ahead with modern services.

There's our Phone-A-Loan Service, for instance. To get a loan you just call us, and we make all the arrangements by phone.

And there's our computerized "Unibranch Service" which puts your money wherever you are. By merely presenting your passbook, you can make withdrawals or deposits at most of our Ontario branches — not just the one you regularly deal with.

It pays to open a savings account with Canada Trust. You could discover you've won Long John's Silver Mustang and Gold Montego Wagon!

This offer, and the contest rules, are available only at the following Canada Trust branches.

*Each contestant shall be entitled to no more than one hundred opportunities to win.

Canada Trust

Milton: Main at Charles • Toronto: Yonge at Adelaide • 15 St. Clair W. at Yonge • 472 Eglinton W. • 3006 Bloor at the Kingsway
 Markland Wood Plaza, Bloor St. W. • Yonge at Erskine • Richview Plaza, Eglinton W. at Wincott • Shoppers' World, Danforth Ave.
 St. Andrews Plaza, The Links Road • Fairview Mall, Don Valley at Sheppard • Oakville: 282 Lakeshore East at Trafalgar
 Bramalea: Bramalea City Centre (upper level near Eatons) • Brampton: 28 Main St. N. • Georgetown: 55 Main St. N.
 Mississauga: 2580 Hurontario near Hwy. 5 • Square One (upper level near Woolco) • Barrie: Dunlop at Memorial Sq.