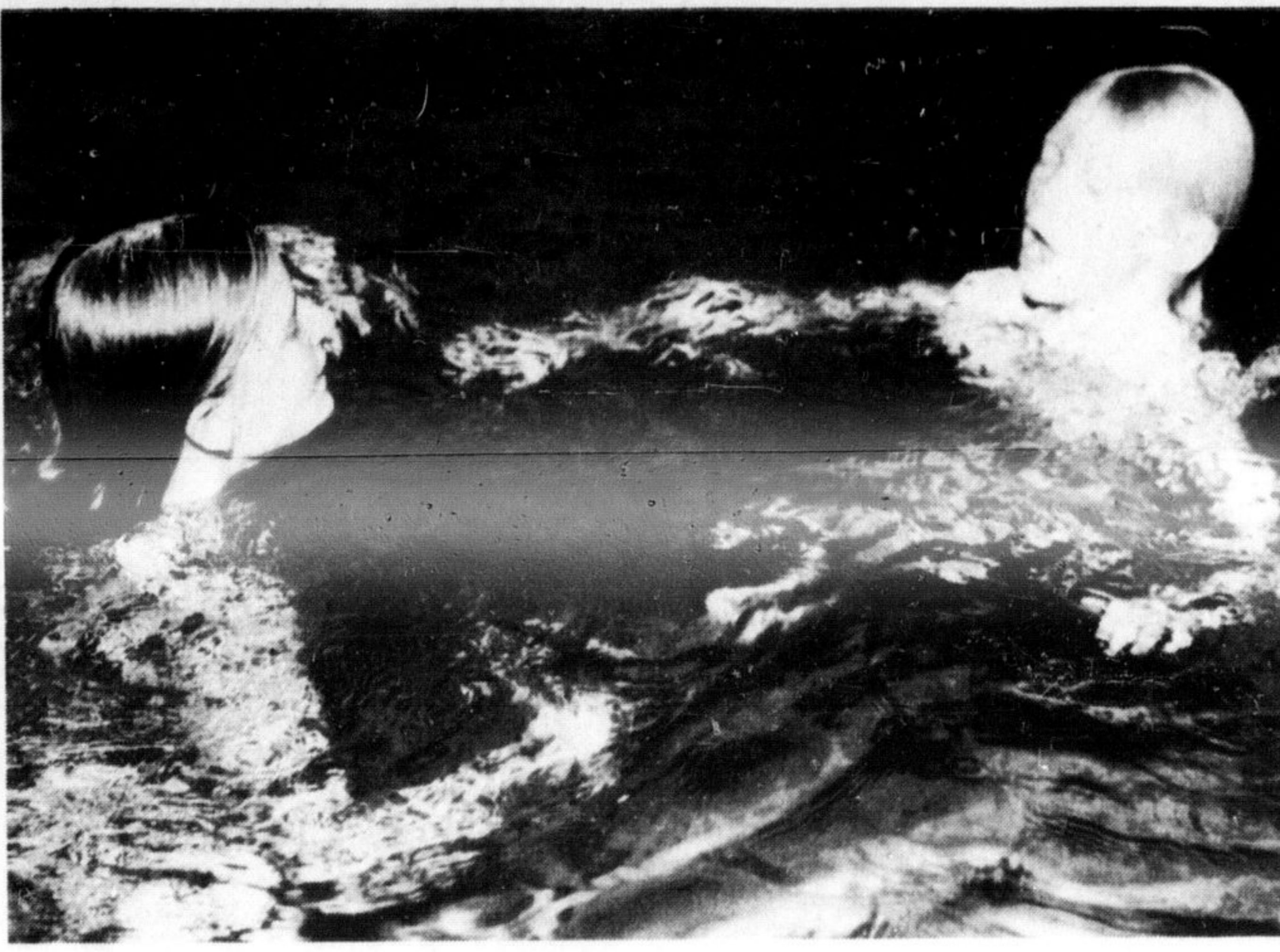


O.S.D. POOL will accommodate Milton Recreation Committee swimming lessons throughout the winter this year. Youngsters were introduced to the program Tuesday and Saturday of last week. Mrs. Margot Welkie (top left) introduced her daughter Lisa, 18 months, to the water Saturday while Tammy Kerr (top right) learned the fundamentals



of staying afloat from instructress Joyce deKoeper. Miss deKoeper (bottom left) was also on hand to supervise Cheryl Krohnert's first time at treading water, meanwhile Jerry Rosenboom (bottom right) received some helpful coaching from Debbie Butler.

(Photos by D. Pink)



Register 120 adults for OSD night school

Registration for night school classes at Ontario School for the Deaf to date stands at 120 with only 10 percent of that number being deaf students. Jim McCullough, principal of the vocational school, says they expect more registration from deaf students, as in the past they comprised 50 percent of the total enrolment.

Sheridan College sponsors the night classes as part of its community service program and all staff persons are paid by Sheridan. Classes are held in Milton because of the outstanding facilities at OSD, especially for printing and

auto body instruction.

Wide area
Classes will be conducted for 20 weeks from 7.15 to 9.15 p.m. beginning Thursday Oct. 11 with people from New Toronto, Brampton, Coonksville, Streetsville, Mississauga, Hamilton and Milton in attendance.

Courses offered included auto body repair, basic ceramics, crafts, English for new Canadians, gym and swim, language for the deaf, machine shop, letterpress and offset printing, mechanical drafting, personal grooming and hair dressing, sewing, total communications, typing, welding and woodworking.

Heroin addict's "psalm"

A reader asked us to publish this heroin addict's "psalm", as a lesson to others.

"King Heroin is my shepherd, I shall always want".

"These tragic words, part of a twisted rewording of the beloved 23rd Psalm, were discovered recently in Reidsville, N.C., in a closed car alongside a dead heroin addict. She was 23 years old.

Her death was ruled a suicide. A hookup with the car's exhaust had sent carbon monoxide fumes from a running motor into the vehicle. Here's the complete 'Psalm'.

"King Heroin is my shepherd, I shall always want. He maketh me to lie down in the gutters.

"He leadeth me in the paths of wickedness.

"He leadeth me beside the troubled waters. He destroyeth my soul.

"Yea, I shall walk through the valley of poverty and will fear no evil for thou, Heroin, are with me.

"Thy Needle and Capsule comfort me. Thou strippest the table of groceries in the presence of my family. Thou robbest my head of reason.

"My cup of sorrow runneth over. Surely heroin addiction shall stalk me all the days of my life and I will dwell in the House of the Damned forever".

Groundwork laid for carnival

A citizens' committee formed to work with the Milton Recreation Department met recently to lay the groundwork for a winter carnival early next year.

In other years the carnival was run by Milton Community Service Clubs. That group disbanded last year. Tentative plans include sanctioned snowmobile races and a number of events indoors and outdoors.

Preserve best
Members of the committee

looked at the agenda of last year's carnival and agreed the best features of the carnival will be preserved.

Recreation director Bob Small was named chairman of the committee while Bob Burt was named vice-chairman and Deb Kelly will act as secretary-treasurer.

Other members attending the meeting include Don Lambert, Rod Lewis, Rose Harrison and Walter Tkackenko.

OUR READERS WRITE:

THANKS TO BRIAN BEST

After reading the editorial "Irony of Politics" in last week's Champion, we felt that we could not let the opportunity pass without expressing our heartfelt thanks to Brian Best for expending so much time and effort to benefit the citizens, the town of Milton and the surrounding area.

Through his engineering qualifications and experience, Brian Best spearheaded the battle to preserve Milton as a unit in the provincially-sponsored regional government. By his untiring efforts in attracting industry to our town, we were able to reap the benefits in lower taxes, and the town of Milton was enabled to grow in an orderly manner. We know that we are voicing the opinion of many Milton citizens and so, as we in the future look back on Brian Best's term of office as mayor, we will realize that it was truly a great period in Milton's history. It is so easy for the rest of us to sit in our comfortable, cozy corner and criticize.

To all candidates who lost at the polls, we would like to say that we thank you for your willingness to serve our community.

Mr. and Mrs. Howard Schuyler, Milton.

only are backsliders but cause the people running for office to sometimes lose out. It may have been your vote that caused him to win!

I would indeed be ashamed of myself as an adult and as a supposedly intelligent human being if I did not use my privilege to vote on election day. Only laziness and indifference or worse still, apathy, that is the reason so many never show up at the polling booths on any election day.

Yours truly,
Edith Sharpe,
Pearl St., Milton.

KEEP COSTS DOWN

To the Residents of the Township of Nassagaweya:

First of all, may I welcome you to the trials and tribulations of the status of being part of a 'town' soon to be known as the Regional Municipality of Milton. Perusal of the voting statistics shows that you wholeheartedly supported your present Reeve by more than a 50 percent majority vote over that of her opponent in her election as mayor, and she was in fact truly elected by your area alone.

I have with much interest followed your dealings in the Township of Nassagaweya with its council and its problems, and wish to point out that your problems were perhaps minor in comparison to those which you will now face.

The mayor has a responsibility to all of his or her large family in dealing with the matters brought to the council. In the event that you find that it will be more costly to be a part of the Regional Municipality of Milton, you will no doubt see it as part of the responsibility of your former reeve to keep those costs to a minimum. I trust that she will work as hard for the new regional area as she did for your municipality.

Shirley Sim
Highside Dr., Milton

Development Lower yule lights add 30 this year

Continued from Page 1

been broken up so there are no long blocks of condominium units that could become hazardous in the case of fire or getting emergency vehicles to a particular unit.

Access roads and access points to the parkland in the development were discussed and improvements made.

Plans call for 110 units on about eight acres. Parking provisions see each unit having one spot with a 55 spot guest parking area provided as well.

Some reservations
The board noted a number of changes in the application as requested at previous meetings, and pointed out a number of reservations.

The application won approval in principle but it was noted road entrances and internal roads would have to be 28 feet wide rather than 21

as shown in some cases. Members also indicated in their recommendation that the firm should dedicate the 2.2 acres of park land.

The developers offered to sell the land at cost. That point will be discussed as the planning stages advance.

The Chamber of Commerce will close the Farmers' Market after the Oct. 20 market.

The Chamber is currently planning its third general meeting of the year for Nov. 13. A representative of the Ministry of Industry and Tourism will attend to speak on selling in the domestic market.

I wish to thank the voters of Ward I, Milton for re-electing me to a fifth term of office.

I intend to justify your confidence in me over the next three years.

Don Gordon



Karen's

Karen's Flowers say what you really want to say. Let Karen's Flowers express your love, your joy, your sympathy.

Karen's Flowers can deliver beautiful floral arrangements, simple bouquets, colorful plants for you.

Phone Karen's Flower Shop in the Milton Plaza 878-2881—for quality and friendly service.

SIXTY-FIRST IN A SERIES A Mark of Progress in Milton



Installation of services and facilities in Valleyview Gardens began recently at the corner of Derry Rd. and Ontario St. Contractors are cutting roads in an area that will eventually house about 1200 people in addition to commercial, apartment and park facilities. Bordering the Sixteen, a large area has been designated for no construction in the valley lands. The continuing construction in Milton is a further mark of progress.

For a progressive Insurance Program at competitive rates contact...

McCuaig INSURANCE LIMITED

208 Main Street E., Milton 878-2894

JOIN IN THE ... FALL SAVINGS

Choose from a selection of brand name foundation garments, including bras & girdles. The latest in styles & shades.

10% OFF

Accessories make the complete fall look! Select a quality hand bag from our wide selection



"Where Quality & Value go hand in hand"

the **MILTON DEPARTMENT STORE**

200 Main St.
Milton
878-9261
Open
Thurs. - Fri.
til 9 p.m.

Use your Chargex

COME TO **ERINDALE COLLEGE**
UNIVERSITY OF TORONTO
MISSISSAUGA ONTARIO

Open House
and
Official Opening

Sunday, Oct. 14, 1973
1 p.m. to 6 p.m.

Opening Ceremony 3 p.m.

PREMIER WILLIAM DAVIS
Parking at Sheridan Mall
Free Bus Service to Campus
3359 Mississauga Rd.
Mississauga, Ont.

For Information call 828-5208