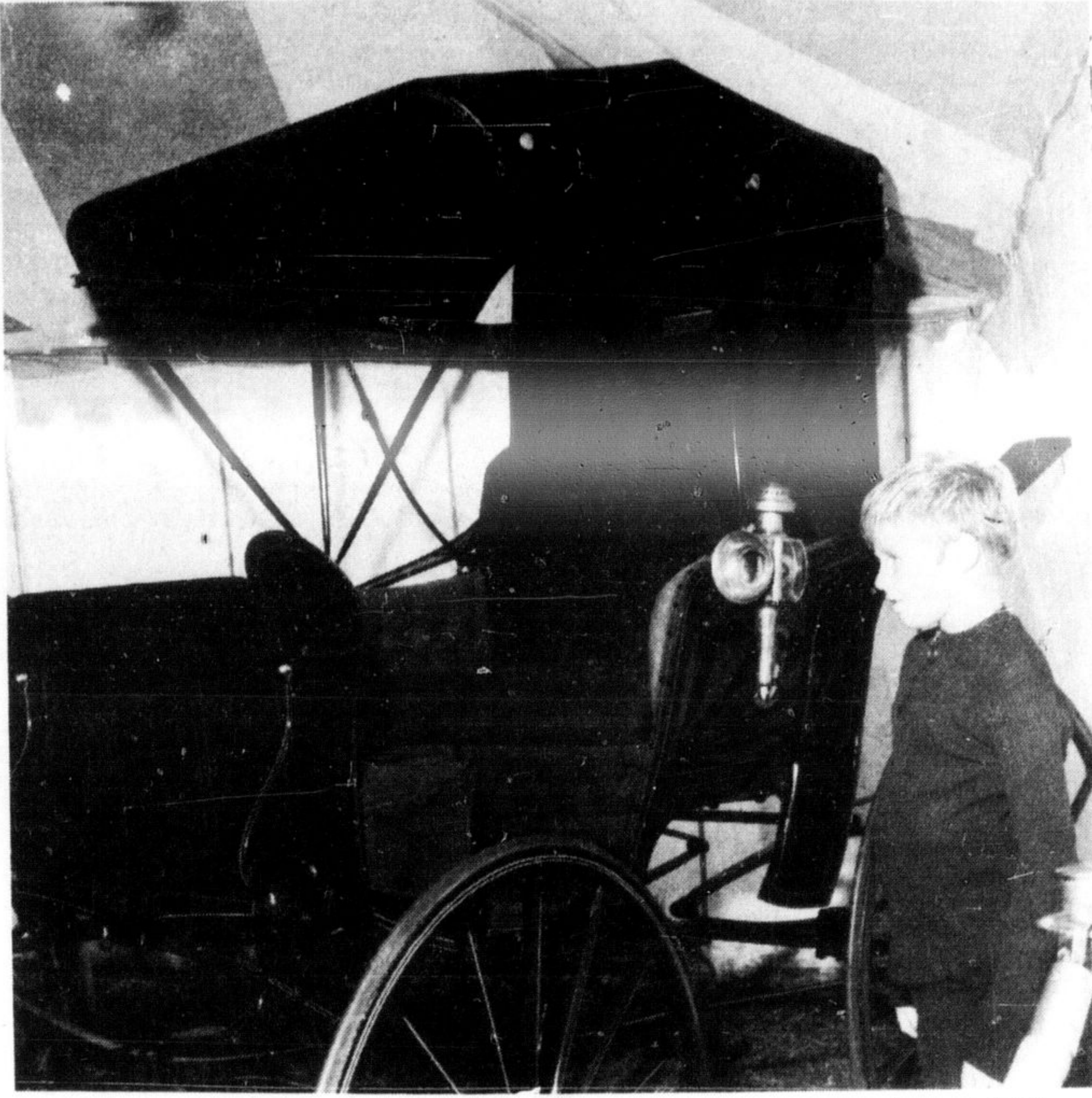




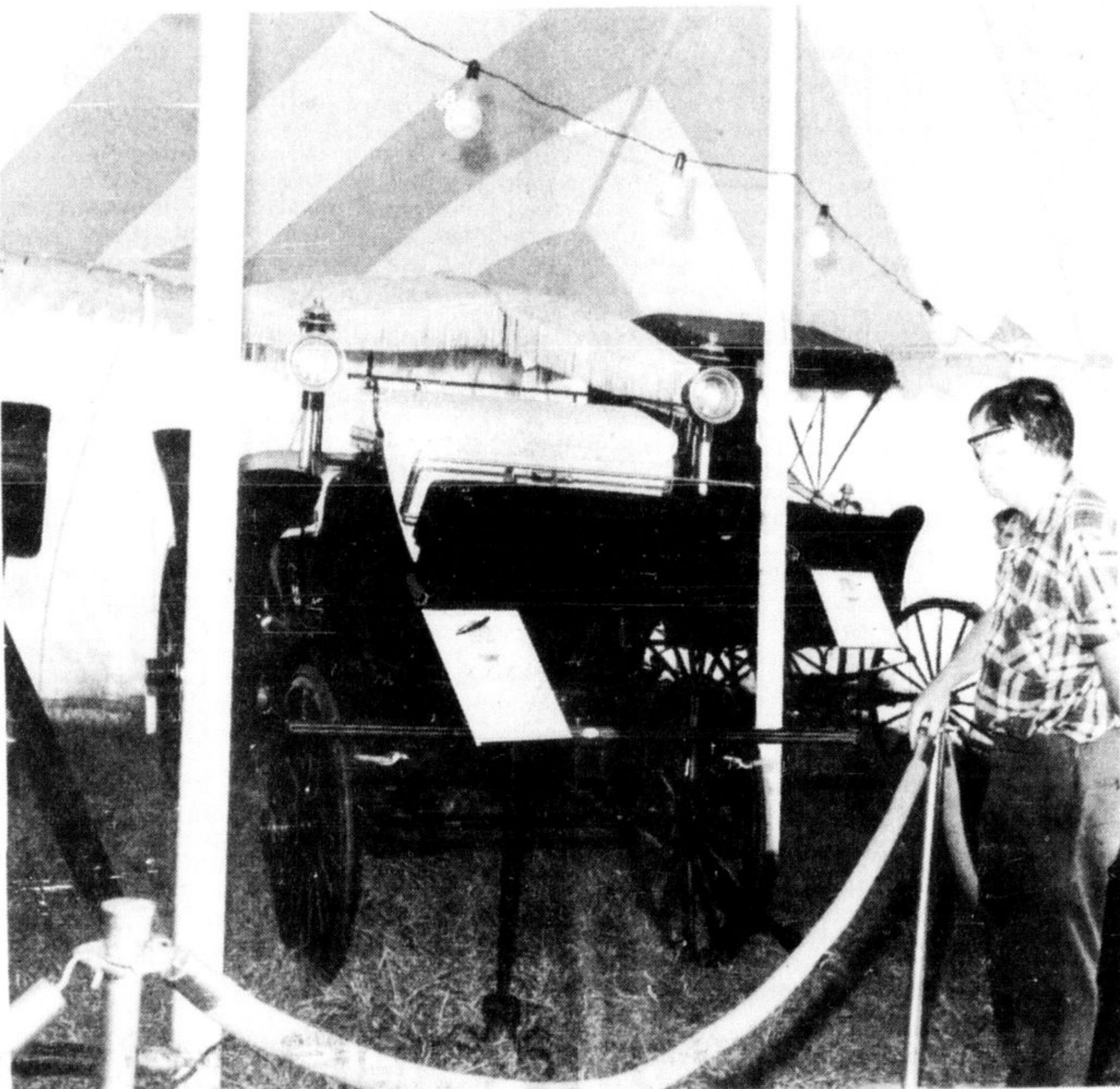
BEER DRINKERS enjoyed a place to rest and wet their whistle and see the Calgary Carriage Collection at Milton Fair Saturday. The event was held by Milton Rotary Club and the proceeds go to crippled children.



MIKE McNALLY was awed by antique carriages on display at Milton Fair Saturday. This particular model is known as the Doctor's Phaeton and was used around the turn of the century.



ROTARIANS JACK RICHARDSON, Ray Olan, Mike Crucefix and Jim Duffey joined the Calgary boys at the Rotary Mike beer garden held in conjunction with the Calgary Carriage Collection at Milton Fair Saturday.



THIS 1883 MODEL of a carriage was among those on display at the Calgary Carriage Show at Milton Fair Saturday. (Photos by B. Burt)

## Beer garden experiment pleases Rotary sponsors

While profits from the first beer garden operated by the Milton Rotary Club aren't expected to be great, the club is regarding it as a worthy while experiment and intends to try it again at other large events, Rotarian Mike Crucefix said after the fair Saturday.

Crucefix was one of several Rotarians helping out with the beer garden held in conjunction with the Calgary Carriage Collection. "We know where we made mistakes and where we can make improvements," he said.

### Steady flow

Crucefix said there was not a big crowd on the Friday but between 1 and 6 p.m. Saturday there was a steady flow of people in their tent and the busiest time was during the rain at mid-afternoon.

Proceeds from the Rotarians' efforts go towards crippled children. While the proceeds from this function aren't expected to be great,

Crucefix said the experiment was successful in convincing him that the project would be a money maker if handled right.

He said he hoped the club would consider having an open dance with an Oompah band on the Saturday night next year and he hoped the advertising could be improved in future years.

The beer garden was a first for the fair. Alcoholic beverages have never been sold at the fair before.

## WHY DO YOU LIVE IN MILTON?

These are my convictions as a former student living in Milton.

- MAYBE you grew up here and never found a place you liked as well.
- MAYBE you moved here because you thought it would be a good place to raise your family.

Whatever your reasons, odds are you stay because you like Milton—you enjoy its neighbourliness, its friendly energetic organizations and clubs, the tree-lined streets and pleasant parks and pond, the convenience of having a modern hospital, schools and shopping just minutes from the country.

Sure you'd like Milton to grow, to prosper. But you also want it to retain its own identity, the good things that make it special to you, that warm feeling that makes it home.

Anne MacArthur—she as you do. She grew up—she grew five miles outside Milton—she raised her family here—she taught high school here for 27 years. Perhaps she taught you—she may have taught your children as well. Those she did teach learned to admire and respect her for her principles, her concern for this community.

Now she's willing to put that concern to work for you as Mayor of Central Halton. You can trust her to speak for your best interests in the new regional government. She's demonstrated her ability before during her years as councillor and reeve of Nassagaweya township and as Warden of Halton County. Hers is a record of realistic development for the present and sound planning for the future. Put that experience to work for you. Make sure Milton stays the good place you want your children to grow up in.



**VOTE**  
**MacARTHUR**  
for  
someone who  
really cares

# COPELAND LUMBER

MEMBER OF THE  
**BOLD**  
ORGANIZATION

**FINAL WEEK**  
WE'RE CLEARING ENDS-OF-LINES AND LIMITED STOCKS AT PRE-INFLATION PRICES. SHOP THIS WEEK.

## Pre-Season Clearance PANELLING

Paneling prices are UP but we have a wide assortment of prints and embossed panels for you at 1972 pre-inflation prices. This year's prices for comparable quality will be from \$6.95 to \$7.95. COMPARE AT OUR CLEARANCE PRICE of \$4.45 to \$6.25. There is a limited quantity at these prices so make your selection now from the following:

|                        |          |
|------------------------|----------|
| BUTTERNUT 4'x8'        | ea. 4.45 |
| BENGAL ROSEWOOD 4'x8'  | ea. 4.45 |
| FRONTIER WALNUT 4'x8'  | ea. 5.25 |
| MOUNTAIN HICKORY 4'x8' | ea. 5.25 |
| EMBASSY ROSEWOOD 4'x8' | ea. 6.25 |
| KNOTTY CEDAR 4'x8'     | ea. 6.25 |
| DUTCH ELM 4'x8'        | ea. 6.25 |
| BURNT SUGAR 4'x8'      | ea. 5.50 |
| BURNT ELM 4'x8'        | ea. 5.95 |

## RANGE HOODS

Miami Carey 2 speed fan with light finished in Copertone, Avocado and Harvest Gold. To Clear

|                             |              |
|-----------------------------|--------------|
| DUCTED MODEL A Reg. 36.15   | <b>24.95</b> |
| DUCTLESS MODEL D Reg. 45.90 | <b>32.95</b> |

An exceptional value while current stock lasts only.

## Save up to \$25 on HOOVER VACUUMS

|   |              |              |
|---|--------------|--------------|
| 1 No. 1032 Convertible Upright Type Reg. 84.95  | SAVE \$25.00 | <b>59.95</b> |
| 2 No. 1078 Deluxe Convertible Upright Type. Reg. 99.95  | SAVE \$25.00 | <b>74.95</b> |
| 2 No. 888A Constellation Floating Canister type complete with tools - Reg. 52.95                | SAVE \$13.00 | <b>39.95</b> |
| 1 No. 2802 Pixie Hand Carry Model. Ideal for cleaning cars, chairs or chesterfields. Reg. 39.95 | SAVE \$10.00 | <b>29.95</b> |

## FLINTKOTE SHEET VINYL FLOORING

Mannington Line For kitchen, bathroom or family room  
5 patterns Reg. \$3.75 **2.99** sq. yd. 2 patterns Reg. \$6.25 **5.19** sq. yd.  
We can arrange for installation or supply you with the materials for a do-it-yourself project.

## CABINET HARDWARE

National Brand in Classic, Country and Mediterranean Styles. Current stock of this fine brand of hinges, pulls, knobs and back plates.

Reduced to clear by **25%**

## FIBREGLASS PANELS

4 oz. Light Green and Forest Green  
26" x 8' Reg. 4.45 **3.95** ea. 26" x 10' Reg. 5.55 **4.95** ea.

## REDWOOD STAIN

Heavy bodied stain good for fencing. This has been a good buy all summer at \$3.88 gal.

Reduced to clear **3.18** gal.

## FLINTKOTE BLACKTOP SEALER

Protect your driveway before winter. Save on this low, low price.

5 Gallons **5.88**

## WOODSMAN FIREPLACE

Only one but complete with grate and screen. Reg. \$105.

Reduced to clear **85.00**

## WHITE LATEX

Suitable for exterior or interior use. 30 gallons only. Reg. \$3.95.

Reduced to clear **3.25** gal.

Look for other clearance items on display in our showroom



700 Main St.  
878-2351

Open Monday to Friday  
8 a.m. to 6 p.m.  
Saturday 8 a.m. to 5 p.m.

## Town of Central Halton MUNICIPAL ELECTION RETURNS OCTOBER 1ST, 1973

For the purpose of returning the vote of the Central Halton Municipality, an Election Central will be set up in the cafeteria at the Milton District High School, 396 Williams Avenue, Milton.

The Cafeteria will be open to the public at 9:00 p.m. and will remain open until all Polling Subdivisions in Central Halton have returned their vote. It should be noted that no returns will be available prior to 9:00 p.m. since the Polling Subdivisions do not close until 8:00 p.m.

J. McGeachie,  
Deputy Returning Officer,  
Town of Central Halton.

Telephone reports on election returns are being made available as a public service by The Canadian Champion. Phone 878-2341 or 878-2343 after 9 p.m.