

(Photos by R. Downs)

### Steamers return . . .

(Continued from Page One) and display of their antiques. But it costs a lot to put on the show, too, and a large part of the proceeds from gate receipts, rentals and souvenir sales goes to pay the mountain of expenses incurred in such a large exhibition.

**Ideal site**  
Steam Era has always held its reunions in Milton Fair Grounds — the site is ideal for such a show and the central location helps draw crowds from nearby cities and towns.

Thrashing, log sawing and belting up contests will be part of this year's show.

Fans to test the strength of the engines and a teeter-totter to test the operators' driving skills will also be on hand.

In addition to the big stars of Steam Era there are hundreds of smaller exhibits. One building will be the "Barn of Yesteryear" and house hundreds of relics of the early days of farming in Ontario. Another will have steam models on display, and another will have a showing of assorted antiques. There will be a souvenir stand, country store and trading post, plenty of food booths plus a group serving full course meals, a miniature chapel, a steam calliope, horse-drawn vehicles and musical entertainment in front of the 1,700-seat grand stand.

Organizers promise daily parades in the fair grounds at 4 p.m. plus a noon parade Saturday at the official opening ceremony. Ontario Minister of Agriculture and Food W. A. Stewart will officially open the reunion during the noon parade that starts at 11:30 a.m. at the plaza and winds its way through the downtown area to the fair grounds. Gordon Rayner of Milton is treasurer of the club and Sherwood Hume of Milton is a director. Another area director is Fred Ruddell of Georgetown. Others on the executive are vice-president Bernard Porter of Eastwood, secretary Stuart Colbourn of Mississauga and directors Jack Arthur of Ayr, Allan Evers of Orillia, Norm Schell of Woodstock, and Bill Shillinglaw of Mount Albert.

### ANNOUNCEMENT

ALL SEASON'S HAIR STYLISTS are pleased to announce that

**Elsie Antonucci**  
of Salon Capri

Will commence working

**September 6th, 1973**  
at 14 Martin Street.

For Your Appointment call

**878-2021**

## ANTIQUES

• COLLECTOR ITEMS

Fine Old Furniture

Open 2:30 to 8 PM THURS. & FRI. TILL 9

**K & A Antiques**

Milton

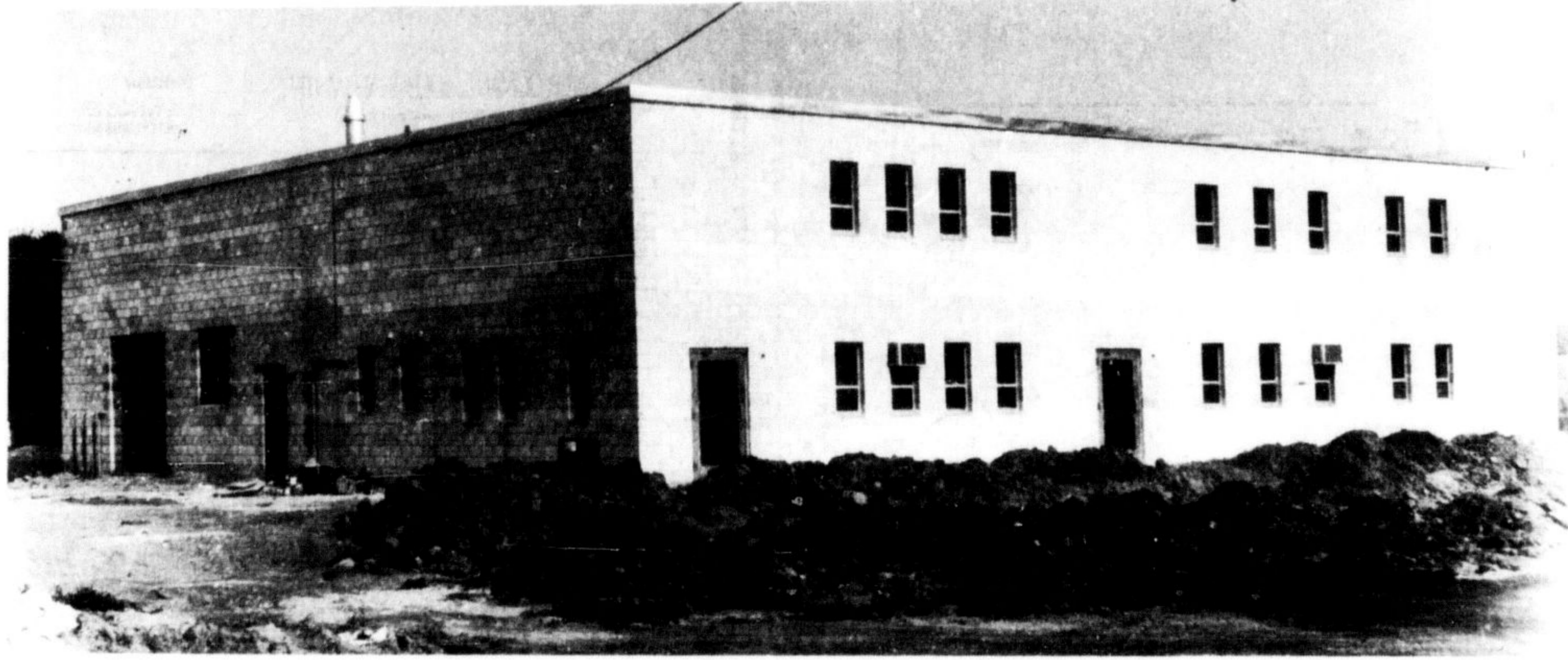
(RESIDENCE) 689-4751 WATERDOWN

**POLLOCK AND CAMPBELL**  
Manufacturers of  
High Grade Memorials  
Memorial Engraving

Telephone  
621-7580  
GALT  
62 Water St. North

HALTON PAINT AND CHEMICALS Ltd., one of Milton's newest industries, went into production last week in the new plant at 245 Bronte St. When it reaches full production the 6,400 square foot plant will be capable of producing 3,000 to 5,000 gallons of paint a day. The \$180,000 plant was built by Halton Paint's owner Amal Batacharya with the aid of local contractors. Above left, Mr. Batacharya

works at a large mixer and an employee prepares a 500 gallon tank to go on the mixer. Above right, production manager Ron Clark checks the coloring of the firm's first paint order. Lower left, Paul Anderson and Michael Jeffrey clean out a sandmill machine. Lower right, Mr. Batacharya works with a color mixer that provides 1,500 colors of paint. The new plant is shown below.



## OLD FASHIONED bargain sale

This is to make room for the NEW Fall and Christmas merchandise which is due to arrive in early October. Many items are ONE OF A KIND and will be sold on a first come basis. Don't delay.

	Reg.	Sale		Reg.	Sale
(NEW) Hanimex 1000S Slide Projector	69.95	49.95	(NEW) Metz Mecalux Strobe Slave Unit	39.95	15.00
(NEW) Hanimex 500-EF Slide Projector	139.95	89.95	(NEW) Testrite Slide Copier	99.95	69.95
(NEW) Hanimex 800ZR Dual Movie Projector	119.95	93.45	DEMO Fotoval Computer (consignment)		75.00
(NEW) Hanimex M100 Auto Super 8 Camera w/ grip	49.95	25.00	(NEW) Flash Bounce Umbrellas	12.95	7.95
DEMO Keystone XL Super 8 Camera	139.95	94.50	(NEW) Twin (sync'd) Flash Bracket	12.95	7.95
DEMO Fujica P-1 Single 8 Camera w/ pouch	89.95	30.00	(NEW) Richard Wash (hypo) Indicator	36.95	25.00
(NEW) Fujica P-1 Single 8 Camera	89.95	40.00	DEMO Hanimex FISH-EYE lens f:5.6 / 7 mm (Pentax Mount)		99.95
(NEW) Fujica C100 Single 8 Camera w/ case	69.95	45.00	(NEW) Hanimex Wide Angle 2.8 / 35 mm (Minolta Mount)	97.95	49.95
(NEW) Polaroid BIG SHOT Camera	24.95	17.00	(NEW) Hanimex Telephoto 2.8 / 135mm (Minolta Mount)	99.95	49.95
(NEW) Ricoh Hi-Color Underwater (35 mm) Kit—Complete	119.95		(NEW) Yashica Tele-attach for 3.5 TLR		19.95
(NEW) Ricoh 35 mm (1/2 frame) Underwater Kit—Complete	119.95		(NEW) Braun F110 "Hood-Winker" model	64.95	35.00
USED Ricohflex TLR w/ case (complete overhaul)	39.95		(NEW) Miida 3 section mono-pod	16.95	9.45
			(NEW) Miida Hobby / camera precision TOOL KITS 50 per cent off		

S.S. Tanks & reels, film dryers, d / room acces., chemicals, custom frames, gadget bags, etc. etc.

**MANY ITEMS CLEARING AT OR BELOW COST!**

## MILTON PHOTOGRAPHIC

162 MAIN ST. MILTON

# SIDEWALK SALE

## BARGAINS GALORE

AT

## MILTONS DEPT. STORE

UP TO

# 50% OFF

**"MONEY SAVING" SALE ITEMS  
THROUGHOUT THE STORE**

IN ALL DEPARTMENTS

**LADIES' • MEN'S  
GIRLS' • BOYS'**

*Let's Join With Milton Department Store  
In Helping to Beat Inflation*

Shop now for best selection

CHARGE For Your Convenience

# MILTON the DEPARTMENT STORE

Open Daily To 6  
Thurs. Fri. till 9 p.m.

200 MAIN ST.

MILTON

878-9261