

78. AUCTION SALES

ANTIQUE AUCTION

FOR GEORGE A. GRUNDY

To be held at the farm situated just north of junction 24 & 25 Highway at Ospringe on

SATURDAY AUGUST 18 at 11 a.m.

PARTIAL LISTING: FURNITURE: Brass bed - double: Boston rocker: 4 Nursing rockers: Parlor table: Pine lift: top desk: Pine flat back cupboard: Pine corner cupboard: Pine jam cupboard: Old ash secretary desk: 2 School desks: Top for flat back cupboard: Church pew: 2 wicker rockers: 5 pc. settle set: 2 hall stands: 2 round oak tables on pedestal: Side chairs: Smokers stand Extension table & 5 chairs: Oak dresser: Pressed back chairs: Wardrobe: Several odd chairs: 2 Knee hole desks: Medicine cabinet: Old kitchen cupboard: Brass trimmed bed: Large washstand: Oak buffet: Small oak china cabinet (good): Combination desk & china cabinet: Pressed back high chair.

GLASS & CHINA: Blue syrup jug: Clover leaf pitcher: 2 Cheese dishes: Acorn wall plate: 2 Demi John's - 12 gal.: Lots of other glass & china.

LAMPS: Gone-With-The-Wind lamp: Aladdin lamp: 2 Miniature lamps: Pair of brass piano lamps: 4 Oil lamps: Buggy lamp: Lanterns: Railroad lantern.

BRASS ETC.: Brass umbrella stand: Silver butter dish: Brass collar tops.

PRIMITIVES: Wagon wheels: Flail: Brass & Porcelain door knobs: 6 Window sash 37 1/2 x 39 1/2 with snowflake glass: 3 Small wooden barrels: Lots of old tools like clamps: wrenches, mallets, augers etc.: Small pony sleigh: Box of cut nails: Apple peeler: Butter ladle: 2 Trivets: Several old odd jars & bottles: Brass cow bell & other bells: Double trees & neck yokes: Cast iron pot: Harness brass: 2 Qt. Copper measure: 2 Walking plows: Single oak yoke: Broad axe: Leg vise: Wooden shovel: Wood wheel: Wooden pad & tub: Tin bathtub: Copper boiler: Small auto harp: McGlaughlin cutter: 2 Sets of chimes & cutter bells: Lots of pictures & frames: 2 Old stop watches: Trunks: 3 Spigots: Lots of jugs & crocks: 5 Pocket watches: Coffee grinder: 2 Cast iron stoves: Blacksmith tools: 1878 Bells: 1907, 1916, 1957 Eaton's catalogues: 1918 Simpson's catalogue.

MISCELLANEOUS: 2 Aluminum step ladders: 2 Exhaust fans: 3 Toilet sets & odd pcs.: Electric brooder: Hot water tank: 2 Moffat electric stoves: Wood's freezer 21 cu. ft.: Electric motors: Viking electric stove: Cushman golf cart rebuilt motor: 2 Used rotary mowers: Duo Therm space heater with 100 gal. tank: Square space heater: Easy washing machine: Chrome set: Frig: 2 Industrial floor polishers (large): Admiral T.V. (good condition): 9 1/2 h.p. Johnston ob. motor: 2 Remington chain saws.

TERMS: CASH NO RESERVE NOT RESPONSIBLE FOR ACCIDENTS.

A very large offering - Something for everyone. Lunch available. Please register on arrival

MAX STOREY Rockwood, Auctioneer

78B7

MONTHLY CONSIGNMENT

Auction Sale

Saturday, Aug. 18 at 12:30 p.m.

Located 1 1/2 Miles East of Waterdown on No. 5 Hwy.

TRACTORS

Ford 6000 diesel, Int. 414 diesel, Int. B-250 and loader, M.F. 50 diesel with multipower, Ford Jubilee, Ford 8N's & 9N's, Ferguson 2085, Int. "A" with cultivators, John Deere 420 with loader, Allis Chalmers CA with loader, Oliver 50.

TRUCKS

Truck with grain sides (cap. 300 bu.) Int. cub Cadet 10 H.P. with mower, Mtd. 5 h.p. riding mower, 7 h.p. garden tractor. Several others.

MACHINERY & EQUIP.

New scraper blades, New post hole Auger, New Woods rotary mower, New 180 bu. Turner grain bin, 3 point hitch 2 & 3 furrow plows, 3 point hitch & drag discs, 3 point hitch Ferguson cultivators, 2 wheel trailer, 4 wheel wagon & rack, JD 2 row corn planter, 50 gallon field sprayer, JD 46A tractor loader, 7 ft. Cult-packer, 200 gallon Ritten House orchard sprayer with blower, Lilliston rolling cult. (2 row), Case rotary hoe, Front end loader for Ford or Ferg. Foot staple (New), handbox stapler (1 yr. old).

PARTIAL LISTING ONLY

FURTHER CONSIGNMENTS WELCOME

SALES MANAGER BRYAN LILLYCRIOP 689-1374

AUCTIONEER JIM McCARTNEY

78C16

AUCTION SALE

for Mr. & Mrs. Cam Leishman

to be held at their residence 50 Roseford Terrace in Acton on

Friday evening, Aug. 24 at 6 p.m.

APPLIANCES: Viking Frig cross-top freezer: Moffat electric stove - 24": Westinghouse wringer washer: Westinghouse range: Singer electric sewing machine: Kenmore vacuum cleaner - near new: Westinghouse floor polisher: Floor lamp & table lamps.

FURNITURE: Chesterfield (beige): Double bed & box springs: 2 rattan chairs: 2 end tables: continental bed - new mattress: 2 blanket boxes: 2 Bentwood chairs.

MISCELLANEOUS: Rug & Pad 6' x 9': Raymond sewing machine: T.V. tables: Garden tools: Books: Springs for double bed: Springs for 39" bed: Pots, pans, etc.: Silverware & carving sets: sad irons: Gal. of white paint: Bedding, linen etc.

DISHES: 4 Apothecary jars: Shaving mug: Crocks: Brass spittoon: Brass font for parlour lamp: Quantity of dishes & glass - some old.

TERMS CASH NO RESERVE OWNERS MOVING TO APARTMENT NOT RESPONSIBLE FOR ACCIDENTS

MAX STOREY Rockwood, Auctioneer

78B7

78. AUCTION SALES

MAJOR ANTIQUE AUCTION

TO BE HELD

IN THE TOWN OF PORT CREDIT ON SATURDAY, AUGUST 18, 1973 AT 12 NOON AT CLARKE HALL - AUDITORIUM 161 LAKESHORE WEST PREVIEW FRIDAY, AUGUST 17, 2 - 10 P.M. AND ON SATURDAY UNTIL SALE TIME INFORMATION CALL 416-627-7672

JAMES E. WHITEHALL: AUCTIONEER

NO RESERVE BIDS

Everything must be sold!

OVER 400 LOTS TO BE SOLD, FEATURING: Pair of superior signed Baccarat candelabras, ormolu and crystal: Superior signed Louis XVI ormolu and marble clock: oak hall coffee made in northern Germany circa 1650, tapered and dovetailed sides with beaten wrought-iron work: Antique Tiffany style dome, red and pink roses on a rich green foliage background: English Regency walnut table, carved griffins supporting an ebonized top: Louis XIII mantelpiece, white, richly decorated with wreaths, figures and garlands: Carved, gilt English Regency armchair: Pair of Louis XVI candelabras, ormolu with Sevres plaques: Pair of American Empire style armchairs with carved feet and pillars: Ornately carved Victorian oak table with stretchers: Set of ten French crystal water goblets: Pair of large brass and crystal chandeliers: Set of four signed Steuben shades: Hand painted plates by Lomoges, Aynsley, Royal Vienna, etc.: Dble. pedestal English Regency mahogany sideboard: Silver plated English Regency samovar: Set of six wine glasses, signed Royal Brierly: English Regency mahogany tea caddy: set of 8 oak William and Mary style dining chairs: French Regency commode, mahogany with ormolu mounts: French Empire mahogany commode, satinwood with ormolu mounts: Rock-Ola jukebox in working order: Louis XVI style ebonized display cabinet: Ebonized curio cabinet with cabriole legs: Rosewood and brass inlay English Regency repeater clock: Pine furniture including flatback cupboards, sideboard, washstand, blanket boxes, chests of drawers, spinning wheel, daybed, night table, harvest table, etc.: Primitive ironstone and flow blue: American Empire mahogany sofa: Louis XV rosewood carved sofa: Art Nouveau desk set, picture frame, candlestick, lamp fixtures with art glass shades: Silver plated cutlery set for 12: Silver plated serving dishes, centrepieces, boxes, candy dishes, etc.: Assorted mahogany dining and occasional tables: Sets of dining chairs in oak, walnut and mahogany: Oak dining tables: Assortment of stained glass windows: Pine stagecoach trunk: Many fine oil paintings, charcoals, pastels, steel engravings and prints as well as a good selection of picture frames and mirrored frames: Canadian, French, English and American wall and mantle clocks: Many different pieces of American, French, Canadian, English and Oriental china, ironstone, etc.: Hall mirrors: Wall scones: Street lamps: Brass items including candlesticks, inkwells, lighting fixtures and sconces: Excellent assortment of pressed, cut and hand blown glass: Individual wine glasses: Decorated cups, saucers and plates: Vases, pedestals, sideboards, desks, spelter figures, ewers, table lamps, collectors items and many more first quality antiques that must be sold! 78C16

AUCTION SALE

of household furniture, antiques, glass and china, appliances, misc. etc. at the farm, lot 2 conc. 4 on the 4th line of Nass. twp., Halton County, approx. 1 1/2 miles south of Hwy. 401 and approx. 2 miles south east of Campbellville.

FOR MR. AND MRS. ED. PARSON

SATURDAY, AUG. 18 AT 12 NOON

FURNITURE & ANTIQUES: Chrome kitchen table and 4 chairs. Oak table, round. Large oak extension table. China cabinet. Buffet and dining chairs. Several oak bedroom dressers. Single and double beds, steel bed with brass knobs. Several odd, old wooden chairs. Old phonograph and records. Phonograph and radio combination. 2 old clocks. Portable sewing machine. Several crocks. Sealer jars. Knitting machine, glass churn. Sad irons: 2 pine jam cupboards, rocking chair. Small pine table. Ice cream freezer (old). Old bells, some very old clay pipes. Large glass chandelier, excellent condition. Lobster trap. Quantity of Noritake china. Pressed glass. Cups and saucers, lanterns, oil lamps Pill-grim Bros. and Comp. soda bottle. 2 hand blown Cumming & Son soda bottles. Large tree blown gin bottle, hand blown large rose line juice bottle. A number of hand blown ink with eagles. Plus many more good collectible bottles. Glass and china, some good old pieces, and other household items too numerous to be mentioned. Quantity of books, african violets and other house plants.

APPLIANCES: Refrigerator. Westinghouse dryer, Wringer washer machine. Small electric heater. Marconi T.V. 2 vacuum cleaners.

FARM IMPLEMENTS & MISC.: Hay loader, 6 ft. grain binder. Goodson threshing machine. Fanning mill. Set of farm scales. Circular saw. Farrowing crate. Steel farm gate, good as new. 2 wheel steel farm trailer. Scrap iron. Roll of new snow fence, and other small misc. items. John Deere M-hyd. 2 furrow plow.

Terms are cash. No reserves. Farm is sold. Owner moving Sept. 1 Watch for Auction Sale sign for direction coming out of Campbellville. Selling by number. Owner or Auctioneer not responsible for accidents.

AUCTIONEER: CHRIS A. SCHOUTEN 878-2576

MEADOWVIEW AUCTION CENTRE

Rockwood, Ont. Every Friday night at 7 p.m.

Antiques and Used Items Consignments Welcome Rockwood 856-4272 Guelph 822-9872

BRIAN HILL AUCTIONEER 78B7F

82. ROOMS, BOARD AVAILABLE

FURNISHED Bed-sitting room and kitchen, centrally located, abstiners, 878-3551. 82C16-1675

83. ROOMS, BOARD WANTED

ANYONE with over-night accommodations for Steam Era guest please phone 878-3205. 83C18-1661

83. ROOMS, BOARD WANTED

SHERIDAN COLLEGE Heavy Equipment Campus ACCOMMODATION REQUIRED for post-secondary students on course from September 1973 to May 1974. Also Canada Manpower retraining students on 12 week courses run on a year round continuing basis. Please contact the college at 878-3577 or R.R. 3, Milton 83C16

IF it's for sale, a Champion classified can likely sell it for you. Call 878-2341 to place your ad.

81. FOR RENT

Fully Equipped Ultra Modern

ROMA HALL

3090 STEELES AVE., MILTON, ONT. Make your 1973 bookings now for

DANCES - WEDDINGS - BANQUETS CONVENTIONS, ETC.

- * Accommodations up to 400
* 80' x 26' dance floor
* Excellent bar facilities and kitchen
* Controlled lighting
* Modern decor
* Fully equipped sound system
* Complete air recycling filter system

For further information & booking arrangements PLEASE NOTE - CARMELINA SEDITA WILL ACCEPT YOUR RESERVATIONS AT 878-2460, 8 A.M. TO 6 P.M. OR 878-6527 OR 878-4903 AFTER 6 P.M. 81C-1F

85. APARTMENTS FOR RENT

GLEN EDEN COURT

122 Bronte St., Milton

1 and 2 bedroom apartments available in these fine buildings which offer you many facilities not found in other buildings in Milton. Twin elevators in each tower - sauna baths - recreation rooms - play rooms - outside and covered parking free. Electric heating with individual room thermostats.

CALL SUPERINTENDENT AT 878-5375 If no answer, call 878-4528. 85C1F

1 AND 2 BEDROOM APARTMENTS available

Adults Only From \$130 and \$145 monthly, in Acton. Above includes all utilities, colored appliances, drapes and balcony.

ACTON 853-0155

ACTON 853-2003 85C1F

MODERN, one bedroom apartment with balcony, electrically heated, thermostatically controlled. Phone 878-3388. 85C1F-1635

BUSINESS woman with furnished apartment willing to share with another female, age no barrier. Call after 6 p.m. 878-4084 or 854-9804. 85C1F-1517

ONE bedroom apartment, available Sept. 1, hydro, heat, and gas stove included \$125. 878-3435 after 7 p.m. 85C16-1704

2 BEDROOM basement apartment. Adults only. After 5 p.m. 878-2002. 85C16-1656

86. REAL ESTATE

STELLA PARTON Real Estate Limited Broker 398 Bell St., Milton

CAMPBELLVILLE AREA 1 1/2 ACRES

North of the Mohawk, 3 bedroom elevated bungalow, large living and dining room, family kitchen, breakfast nook, bath with vanity, full basement with rec room and walk-out to garage. Asking \$49,500.

10 ACRES

Lovely 3 bedroom side-split. Old English style rec. room, patio doors to walk out, games room & sewing room, double car attached garage. Gorgeous setting amid the trees, minutes from 401. Asking \$74,500.

Stella Parton 878-6705 86C15

BEAVER'S

50 "MODEL" HOMES Considering a new home? Then see Beaver-where there are over 50 different models to choose from. Beaver will build on your lot and foundation and you'll certainly be pleased with the savings and finished home. To get an idea of the costs and savings visit your Beaver store or call

Frank Pinfold Burlington 639-2907 86C27

81. FOR RENT

86. REAL ESTATE FARMS WANTED

Have clients interested in buying small acreage and farms in Rockwood, Acton, Campbellville area. Call me if you are interested in selling your property. Fred Kingstott, Rockwood 856-4952, Office 824-2800.

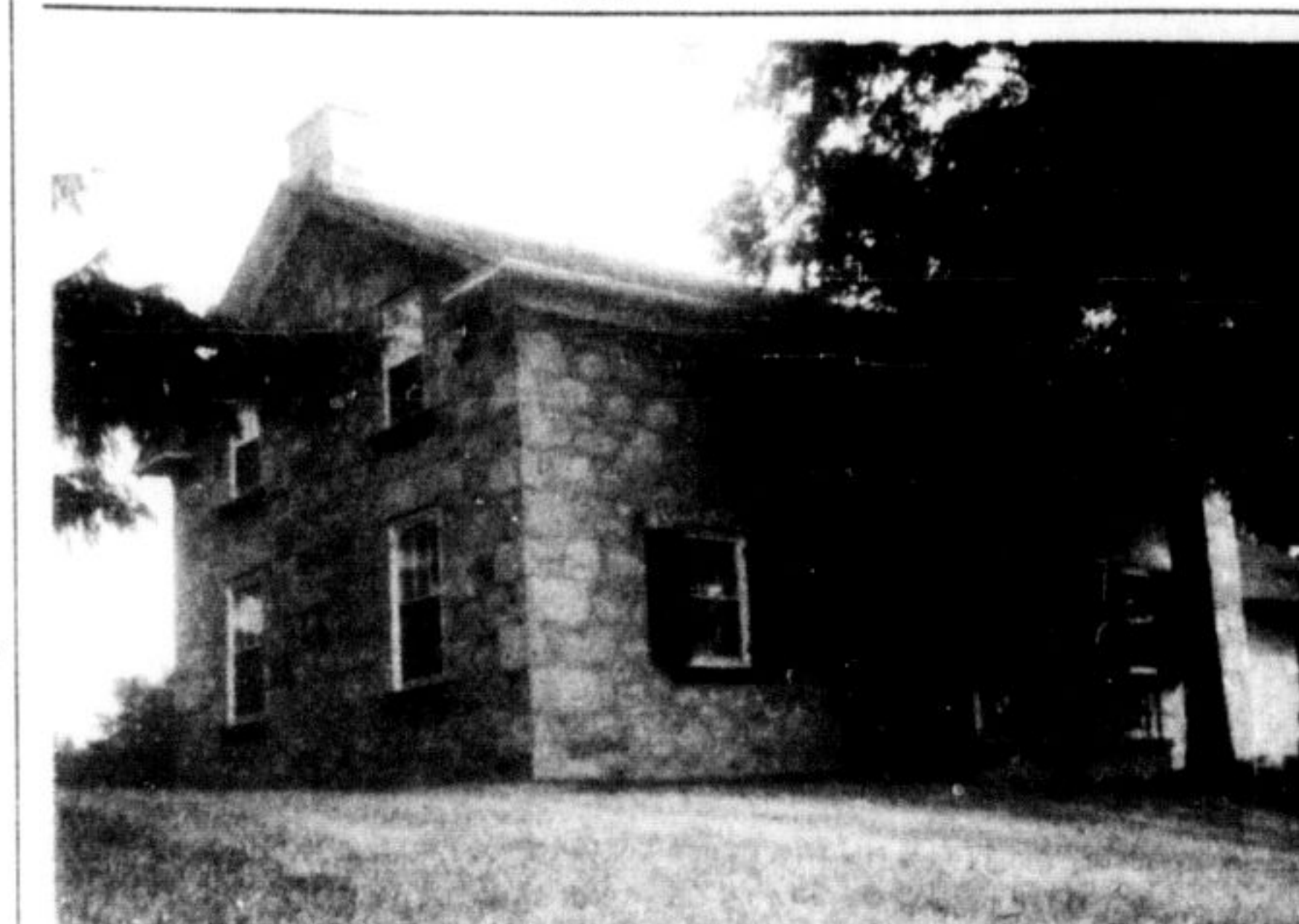
BOWES & COCKS LIMITED REALTOR 86B9

FARMS WANTED

5 to 20 acre parcels, with or without buildings, greatly in demand. Have ready buyers.

Call for free evaluation - JIM BERTIN Business 844-1778 Residence 827-4678

BAYLEY - MacLEAN LTD. Realtor 86C1F



STONE HOUSE-93 acres, Handsome home of the early Canadian Tradition on quiet country hilltop, cooled by sweet summer breezes. Tasteful modernization give city comfort to old fashioned graciousness. Call Joan Harcourt.



WINKEN, BLINKEN, NOD and their parents can find plenty of slumber space with 3 bedrooms - a possible 4th. Bright kitchen with sliding glass doors to deck & patio. To view call Betty Brading.

TROTTER'S DELIGHT-52 acres of flat level land, ideal for training track, small barn, solid large farm home. Located 10 minutes drive from Mohawk Raceway. Call George Smillie. MILTON BEWITCHED-you'll be by this spotless side split featuring 1 1/2 baths family room with fireplace, off-white broadloom thru-out. To view call Betty Brading.

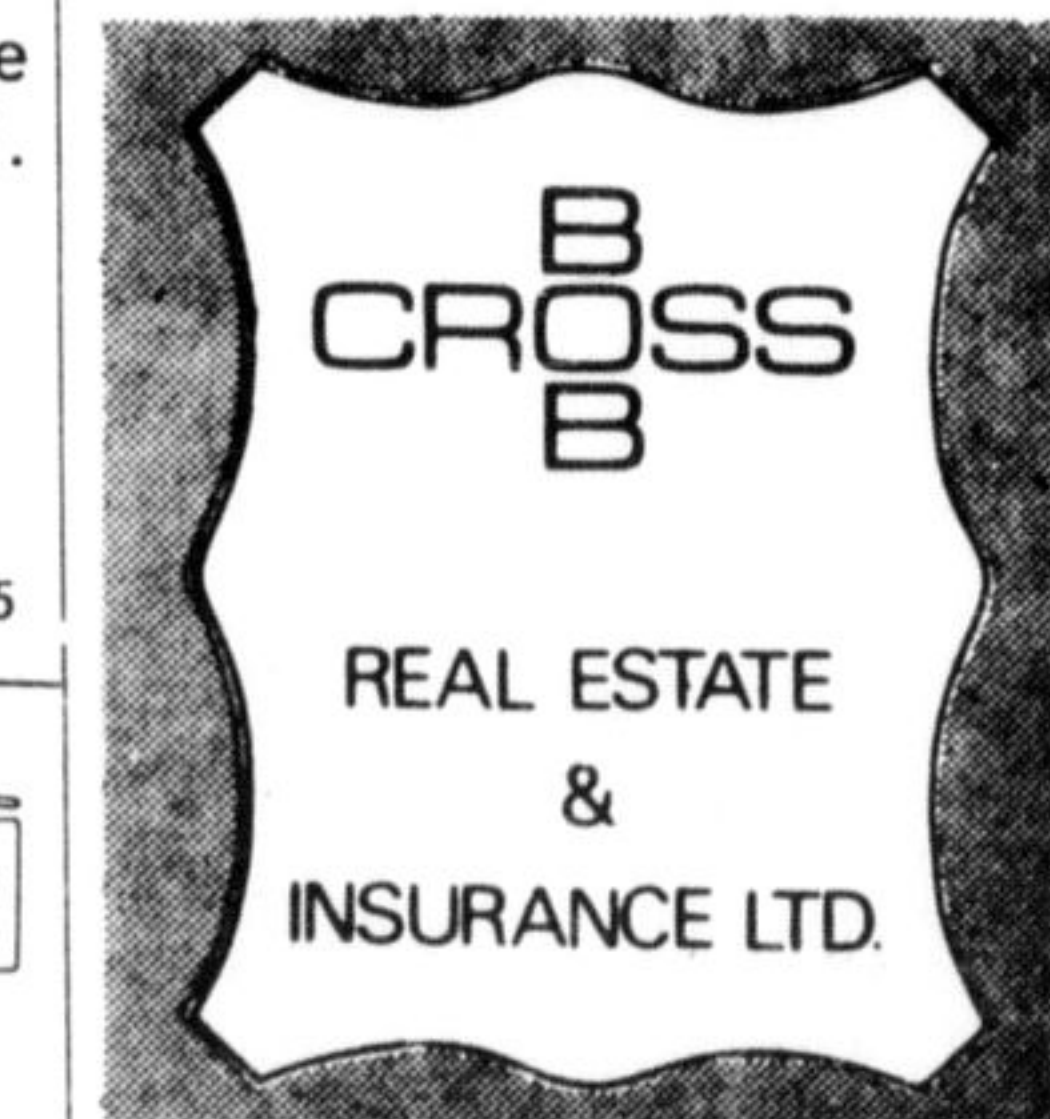
TIRED of punching the clock-Here is your chance to own & operate your own business. Variety store in the heart of town showing good return and above average potential. Owner retiring, says he's been too busy for too many years. Call Colin Smillie.

10 ACRES-1 1/2 miles north of highways 25 & 24. Excellent investment property or building lot. Natural pond site, asking \$16,000.00. Call Betty Brading.

HALTON REAL ESTATE

Limited - Broker

181 Main Street East - Milton 878-4191



68 MAIN ST. MILTON "Broker"

INSURANCE

We invite your inquiries regarding all types of insurance. FIRE AUTO, LIABILITY, LIFE, MORTGAGE ETC.

FOR PROMPT and COURTEOUS SERVICE

Call 878-2888 86C16

CHAMPION classifieds will sell it for you.

THIS IS the page everyone reads - Champion classifieds.

86. REAL ESTATE

CHRISTIE & WOODS

REAL ESTATE LIMITED BROKER

189 Main Street Milton

COUNTRY

BRICK HOME on 1/2 acre treed lot, living room with stone fireplace, 3 bedrooms, 4 pc. bath, rec room, sundeck & garage. Asking price \$59,000. Mortgage to be arranged. Call Yvonne Christie for an appointment, 878-2095.

EARLY POSSESSION: Reduced \$55,900. brick ranch style home near Acton, large living room with fireplace, dining room, rec room with fireplace, ground floor family room, double garage, on nicely landscaped lot. Call Myrtle McClellan 878-5190 or Ross Ballentine 519-853-2000.

HOUSE PLUS COMMERCIAL BUILDING: Modern 3 bedroom brick home, living room with fireplace, rec room, 1 1/2 baths, commercial building 30x50 on this property, ideal for small business, located east of Acton, immediate possession. Asking Price \$55,900. Call Myrtle McClellan 878-5190 or Ross Ballentine 519-853-2000.

100 ACRES: Near Milton, good brick home, barn, workable land. 50 acres approx. near 401, possible future investment. Call Myrtle McClellan 878-5190 or 878-2095.

CALL 878-2095 878-6057 86C16

Say you saw it in classifieds

86. REAL ESTATE

B R T

BEST

Realty and Insurance Ltd.

26C MAIN ST., MILTON 878-4118 EXECUTIVE HOME

Just listed-graceful two storey, clay brick, 8 room home centrally located in Milton on a 132' x 187' treed and landscaped lot. Smart entrance hall, spacious living room with fireplace. Separate dining room, large modern kitchen, panelled den. Four bedrooms, deluxe bathroom. Walk-out basement with recreation room, work and laundry room, 2 piece washroom. Efficient electric heating, average annual cost \$400.00. Stone patio, garage and paved driveway. Listed at \$77,900-financing can be arranged.

"SACRIFICE"

Rock bottom price-\$23,900.00. Older home centrally located in Milton on a 70' x 140' ravine lot close to a park. Living room 18 x 20, kitchen 20 x 20, three bedrooms, 15 x 15 three piece bathroom. Full basement, high ceilings. Land designated "High Density Residential". Early possession.

THE IDEAL HOME

Situated in a park like setting in Milton on a 100 x 220 wooded and landscaped lot. This delightful home provides a 12 x 24 living room with fireplace, wall to wall broadloom, combination kitchen and dining area, sun lounge, three bedrooms-11 x 10, 11 x 13 and 12 x 14. Finished recreation room 15 x 20, fireplace-F/A oil heating-carport-paved driveway. Priced to sell at \$58,900.00. Open to offer. Financing available.

ESQUEJING TOWNSHIP

Good 97 acre farm, first class sandy loam soil ideal for market gardening. Corner farm-good water supply. Modern 3 bedroom bungalow. Living room with stone fireplace, dining room, kitchen, four piece bathroom, full basement with additional rooms. Bank barn, garage and workshop 24 x 24, concrete floor. Open to offer-\$2,000.00 per acre with terms or \$1500.00 per acre cash.

HOUSE FOR RENT

Smart custom built bungalow, spacious combination living and dining room, stone fireplace, picture window facing the Escarpment, panelled den with fireplace, smart kitchen. Three large bedrooms, 1 1/2 bathrooms. Two car garage. One year lease-references required. \$300.00 monthly. Possession 1st September.

SALES STAFF

As part of our Development Programme we require additional sales staff in conjunction with our new office facilities. Special training course starting September 17th-Monday and Thursday evenings-for 15 weeks. Let us help you get into the Real Estate Business.

FOR SERVICE AND SATISFACTION Call 878-4118

Brian Best 878-4118 Jim Bailey 878-6506 Art Peacock 878-6447 Mike Ledwith 878-4873

Members of the Oakville Real Estate Board 86C16

DON HAMILTON LTD.

Real Estate & Insurance

Box 1147 Listowel, Ontario

OFFICE 1-519-291-3500

RESIDENCE 1-519-356-2558

150 ACRE DAIRY FARM, nearly all workable level land, large barn with steel ties for 45 cows plus loose pens, stable cleaner, milk transfer system, steel grainery, imp. shed, 4 bedroom brick home with modern conveniences-priced to sell at \$85,000.00. Call Jake Arends-1-519-291-1788.

150 ACRE BEEF FARM, barn 52x62 with cement stables and loose pens, silos 12X30 and 14X48, imp. shed 32X64, 8 room brick home with oil furnace and full bath, asking \$55,000.00. CALL DON HAMILTON-1-519-291-3500.

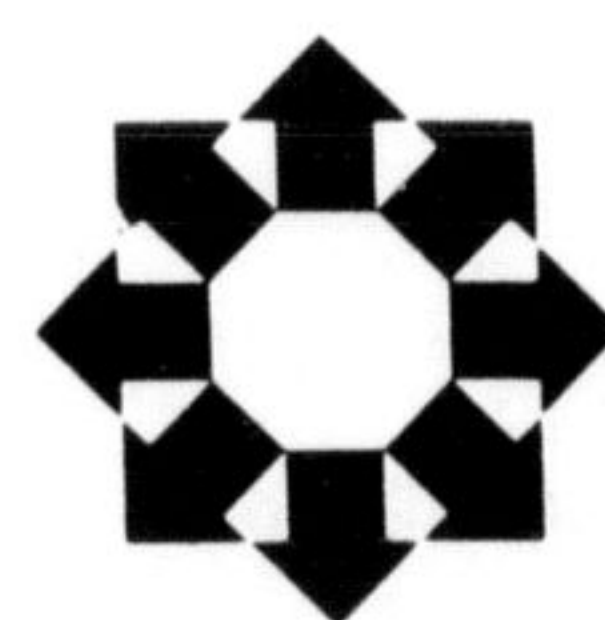
157 ACRE DAIRY FARM, excellent soil, barn ties 40 cows, stable cleaner, bulk tank, 2 silos with unloader, imp. shed, hog pen, brick home with all conveniences, all buildings are steel covered, painted and in excellent state of repair. CALL JAKE ARENDS-1-519-291-1788.

120 ACRE DAIRY FARM, nearly all workable land, steel stanchions for 35 cows plus calf pens, stable cleaner, pipeline milker, bulk tank, silo with unloader, new imp. shed, 3 bedroom brick home, all buildings painted. CALL DOUG HAMILTON-1-519-356-2558. Send for Free Farm Catalogue.

Don Hamilton Real Estate Ltd. Box 1147, Listowel, Ontario.

Office 1-519-291-3500

Res. 1-519-356-2558 86C16



D. GODDARD

REALTOR

LIMITED

REDUCED \$3,000

Owner wants quick action on this beautiful brick bungalow in town! Carries like rent at \$226 per month. Excellent 8 1/2 per cent mortgage. Won't last! Call Annette now 878-2051.

COUNTRY DREAM - 1 ACRE

Nearly new 3 bedroom brick bungalow in sparkling condition. Extras include stove and frig. Situated on good road with direct access to 401. Taxes only \$310. See it with Annette 878-2051

UNDER \$35,000!!!

4 Bedroom country home on over an acre of treed land. Terrific potential!

For further information please

"GIVE ANNETTE A CALL" MILTON 878-2051 TORONTO 742-3038 86C16