

The Canadian Champion

VOL. 114 - No. 9

MILTON, ONTARIO, WEDNESDAY, JUNE 27, 1973

Twenty-Six Pages—Fifteen Cents



A SHINY NEW BIKE was the prize Bill Sine, 11, won Saturday when he was named top boy in the Milton Optimist Club and Milton Police-sponsored bike rodeo. Milton's Safety Officer Const. Ron Oswald presents bike to Bill.

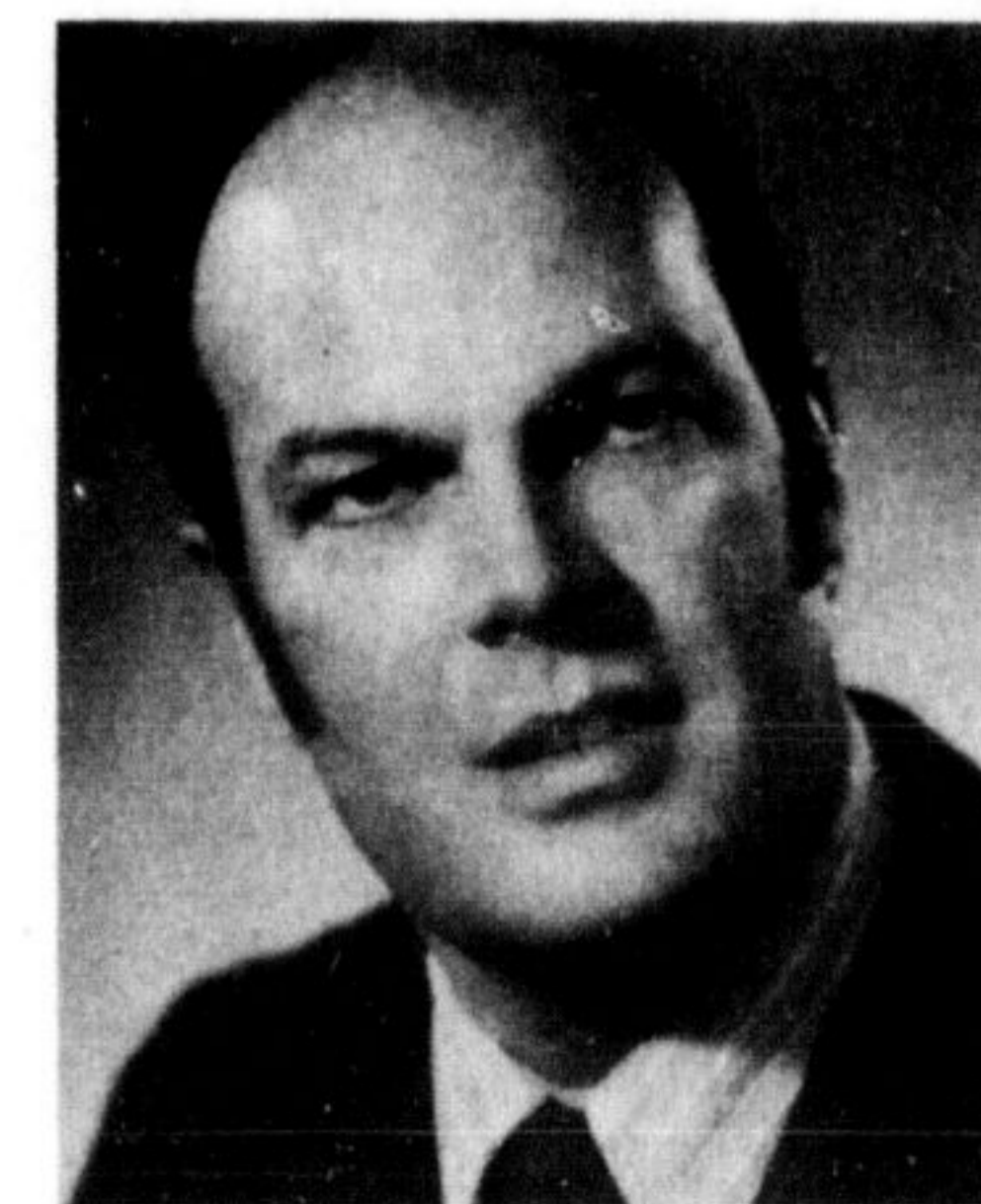
(Photo by R. Downs)



HILARY WILLOUGHBY, age 10, was the top girl rider at Saturday's Milton bike rodeo and she won a shiny new three-speed bike as her prize. She was one of about 50 to 60 contestants in the rodeo held at the Health Unit parking lot.

(Photo by R. Downs)

Caulking, crack cause delay in opening pool



Tom Foster councillor

Tom Foster was named a replacement for the late North Burlington Councillor Mrs. Ella Foote Monday. He was sworn in, welcomed by members of council and sat in on his first meeting Monday evening at Burlington Town Hall.

The 41-year-old farmer was runner-up to Mrs. Foote in a three-way race for the Ward Three seat in last December's election. Tom Patience, a school teacher from Kilbride, was third in the race.

Mrs. Foote died earlier this month after a year-long battle with cancer. Foster will fill her unexpired term until the end of 1973.

Milton Community Pool is expected to be operating this weekend, Recreation Committee officials indicated after weaknesses in the caulking around the seams and a hair line crack in the floor were revealed when pool filling began.

The filtration equipment was moved from its former basement location to a new equipment room in the building erected near the pool.

The relocation of the equipment was a major change and required a special new pump which was put in place late last week to permit pool filling.

The loss of water in the pool required a shutdown which also delayed by one week, the swimming lesson schedule.

"People were quite understanding when advised on the weekend of the delay," Recreation Director Bob Small said. He pointed out he regretted the move but the loss of water was too extensive to continue operating in that condition all summer without further interruption.

By Tuesday morning the caulking was being applied with the expectation the pool would be available for use on the Dominion Day weekend. Part of the Community Day activities are centred around the pool and workers are making every effort to insure its successful opening, he said.

Unveil three alternates

Power route could run near Milton

Big 500 KV line plus substation possible

Three alternate routes for the 610 foot power corridor proposed by Ontario Hydro were unveiled to the press by Bruce Howlett at Queen's Park Tuesday afternoon. The conference revealed the shortest route connecting Pickering to Middleport followed a course just south of Milton.

Mr. Howlett's firm was engaged to find alternate routes for the corridor which would have the least environmental impact.

This most southerly system requires three large substations along the route with one suggested just east of Milton and south of 401 Highway, in the system labelled "Q". All systems would also require a north-south line of 230 kv which would run from the station below Milton to a point at three possible sub-station locations—at Limehouse, Ballinafad and Crewson's Corners, just west of Acton.

Sub-stations would be sites for forests of transformers which would convert the 500 kv power into 230 kv for transmission to utilities in the district.

Two other routes

The two other alternatives to the route first proposed by Ontario Hydro, also shown, entangled the north end of Halton and the south end of Wellington in a spider web of wires.

The power corridor originally proposed by Ontario Hydro was to pass through northern areas of Peel and southern areas of

Continued on Page 3



THE PUBLIC WILL BE ASKED to select one of the alternate routes shown on this map prepared by Bruce Howlett environmental study for the 500 kv hydro power corridor from Middleport (south of Hamilton) to

Pickering. The alternate routes were unveiled Tuesday after months of preparation by the firm. Routes were prepared so they would have the least environmental impact.

Ward Three "wiped out"

Boundary shuffle bothers North Burlington voters

Angry Ward Three Burlington ratepayers and members of a citizens' group sat and watched helplessly Monday night as Burlington Council dealt a death blow to their rural ward. Council approved Bill 127, a bill to revamp the town's present nine wards into eight wards starting Jan. 1—eliminating the northern ward and dispersing it in segments to join with three existing wards in the central part of the town.

"We have been wiped out," Tom Patience of Kilbride told councillors as he made a plea to reconsider the proposal at Monday's council meeting. He and Upper Burlington Citizens Forum president G. Bradford Clements appealed for council to re-open the matter, to no avail. The new ward boundaries bill was approved by a slight majority vote at Monday's meeting.

Prepare region Both men said ratepayers were upset that council rushed through the ward changes just after the death of Ward Three Councillor Mrs. Ella Foote—when the northern ward was without a voice on council. (Council named Tom Foster to replace her at Monday's meeting.)

Burlington was forced to change its nine-ward system to eight wards so representation could be re-arranged for next year when regional government comes into effect.

The town will name 16 local councillors in 1974, half of whom will also serve on the regional council, so an eight-ward system with two representatives in each ward became necessary. The vast rural northern ward was split three ways and portions were given to Wards Two, Three and Eight. Ward Two would be

bounded by East Flamborough-Burlington Town Line, the Beach Strip, Brant St. and Steeles Ave.; Ward Three by New St., Brant Steeles Ave. and Guelph Line; Ward Eight by New St., Guelph Line, Steeles Ave. and the Burlington-Oakville Town Line. UCBF President Clements called Ward Two "unworkable" as it stretches from the skyway canal to Steeles Ave. north of Kilbride. "I don't see how one local

councillor can serve this area," he said, pointing out the ward will be a mile and a half wide and close to 15 miles long.

Hard to win

"Two of the wards the north area will join are the fastest growing wards in town," he said, predicting that within three years the three merged wards would be too large and a redistribution would be necessary. The old

Continued on Page 10

Nassagaweya taxes go down

Nassagaweya Township residents will be paying slightly less than last year in taxes, following approval last week of the township's 1973 budget.

Taxpayers in the Milton and Acton fire areas will be paying different rates this year, with those in Acton slightly higher. Last year both areas were billed on the same 1.819 mill rate. This year the Acton Fire Area rate will be 2.637 and the Milton rate 1.516 reflecting surplus and deficit positions in last year's common rate levy.

One of the major expenditures in the township budget, apart from education, is roads which has been decreased this year. This year's road expenditures were based on spendings of \$89,941. This year the levy will raise \$82,002 which has decreased the mill rate for roads from 12.421 to 11.037.

Elementary public school costs to the township are \$187,224.70 and secondary school costs are \$147,974.19. Payments to the separate schools at the elementary level in Halton and Wellington are \$1,537.40. Expenditures in the Eden Mills police village included in the budget are \$3,100 and in Campbellville \$3,876.73.

The county expenditure in the budget is \$66,911, down slightly from last year, and township expenditures, other than roads are \$67,178.69.

27 years in Milton

Popular teacher Anne MacArthur retires



Anne MacArthur

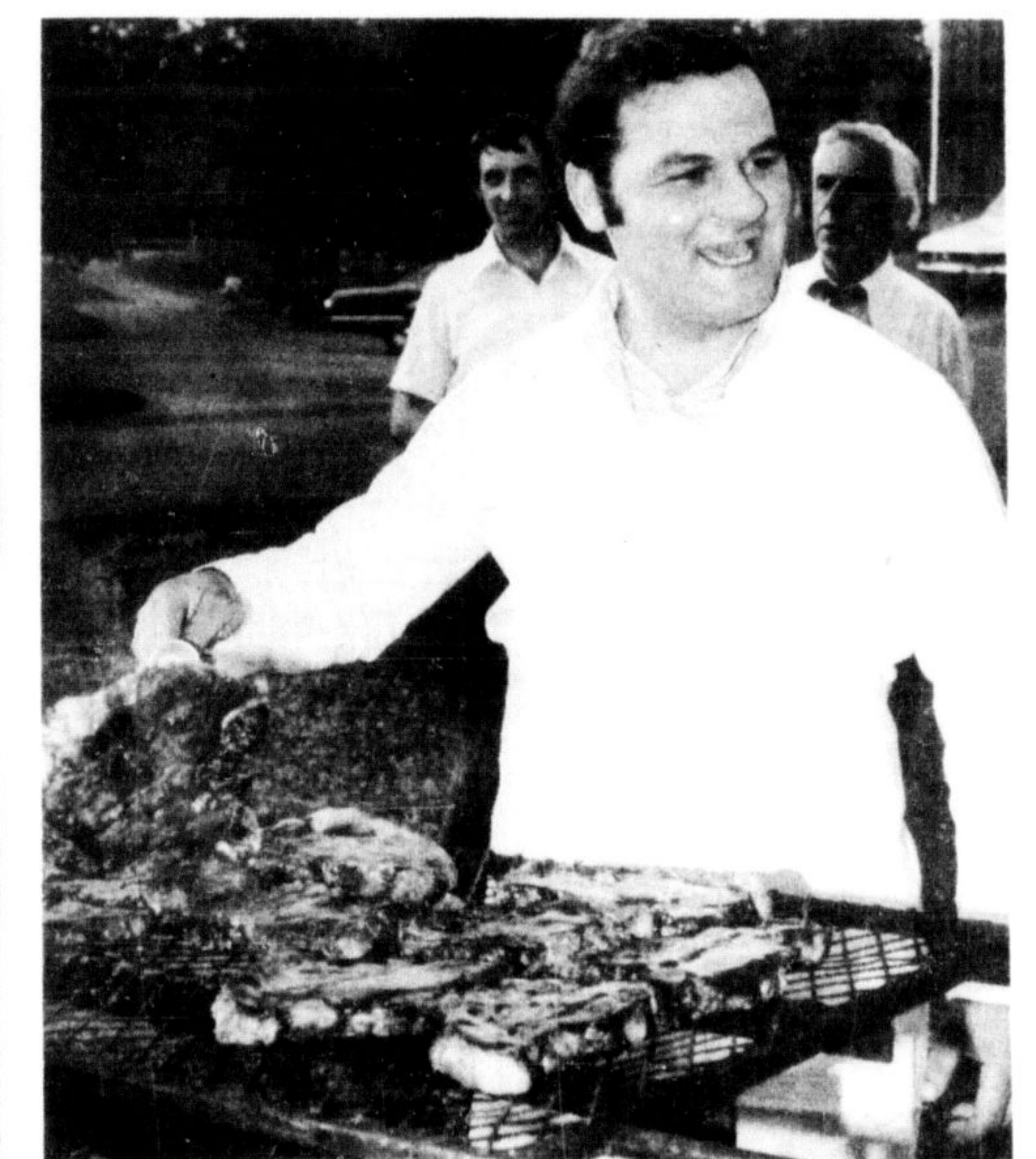
By Bob Burt Last night former students, colleagues and admirers gathered at Milton District High School to help Mrs. Anne MacArthur bid farewell to Milton District High School where she has spent 27 years of a teaching career that spanned the past 38 years.

In bidding farewell to the lady teacher they helped her close the door on a teaching career that has been impressive, to say the least.

Her teaching career saw her travel to Galt where she taught a wide variety of subjects at a training school for girls, to Port Arthur three years later where she worked as the head of the home economics department in the technical and commercial



STEAK AND POLITICS went together Wednesday evening when Halton East MPP Jim Snow and Wentworth MPP John Root hosted their annual steak barbecue and social evening for members of the Ontario Legislature at Snow's farm at Hornby. Snow welcomes Premier William Davis, at left, while at right chef



Peter Stemman hollers "Come and get 'em" to the waiting crowd of cabinet ministers, MPPs and senior government officials. Several executive members of the Halton Conservative Association and Halton MP Terry O'Connor were also on hand.

(Photo by R. Downs)

school there, overseas to Cambridge where she worked for a year and then to Toronto where she worked with retarded youngsters at Edith L. Groves School.

English, Algebra, Physical Education, History and Biology were among the subjects Mrs. MacArthur has taught since moving to Milton in 1946.

Looking back over her career Mrs. MacArthur has a host of happy recollections. In an interview she said she felt her greatest reward from her teaching career came from her involvement in extra-curricular activities and a good relationship with the students.

Her involvement in the drama club and the production of plays over the years as well as her

classroom style have made her a popular teacher. The veteran teacher-politician noted technology and mass media had introduced rapid changes in education during the last 20 years. She indicated a problem with that was important

subjects like reading, writing, adding and spelling suffered. "These subjects should be stressed, rather than giving the students the idea it can all be computerized."

Have to sell it One of the biggest problems

37 Robert St. Sixty feet of hedges were destroyed, according to police and damage is estimated at \$100.

Upon further investigation, police found a nearby garden at the residence of Bob Randall, 108 Bowes St. which had been trampled upon. Approximately

facing a teacher is selling education. "You have to make it attractive and interesting. Each teacher solves this problem a different way," she said.

In retirement Mrs. MacArthur knows she'll miss the

Continued on Page 6

Garden, hedge trampled

Three juveniles and three adults are facing charges following an evening of "trampling and uprooting" to two Milton residents' properties last week, according to Milton police.

The incident occurred Tuesday, June 19 when police received a call from James McAllister of

\$50 damage was sustained. Later that week, Victoria Park was the subject of the second vandalism in as many weeks. A 10 foot length of fence was pushed over and two posts were broken. No charges have been laid in connection with this incident. Damage was little.