

\$1,700,000 transformer goes into service soon

A big, new transformer station being built for Ontario Hydro is now in the last stages of construction. This station to be known as Palermo TS is scheduled to go into service in late June.

Work on the new transformer station was started last fall. It is being built for Ontario Hydro by F. A. Tucker Construction

Company of Montreal. The station is located on Highway 25 about two miles north of Highway 5 and the hamlet of Palermo.

Place 60 students in summer jobs

Region Manager Frank J. Dobson, P. Eng., stated that the transformer station will consist of two 83,000 kva transformers. The total cost of the station will amount to approximately \$1,700,000.

Step power down

Power will be fed into the station at 320,000 volts from the Richview TS to Burlington TS circuits and the power will be stepped down to 27,000 volts to serve the communities of Milton, northwest Oakville and Burlington.

Sixty Milton students found summer employment through the Canada Manpower student Centre in May, says Margaret Donaldson, one of the two students running the placement office.

Job opportunities come into the office steadily every day and there are quite a few for boys, she said. Requests for farm help sometimes go unfilled. The centre is getting to be well known and employers are re-

ponding well, but girls' jobs come through a little more slowly than do boys', she said. Public school students will not be forgotten; lawncutting and babysitting jobs are available for them.

—Plan to be in Milton on "Community Day," July 1. A big program is planned at Rotary Park and Centennial Park.



GARDENS ARE POPULAR these days and Allina Mattiussi is shown watering her onion plants back of her Martin St. home. Mr. Mattiussi has a great variety of plants including onions, lettuce, carrots, beans and tomatoes. (Photo by S. Cassina)



A \$3,000 BATHTUB, a whirlpool bathing unit with a hydraulic seat that lifts the patient from a wheelchair into the tub, was presented to Halton Centennial Manor last week by members of the Manor Auxiliary. Treasurer Mrs. Jean Randell presents the cheque to Manor Administrator Stan Allen, while a staff member Mrs. Laroque tries out the tub. Looking on are Director of Nursing Mrs.

A. Sykes and Auxiliary executive members, corresponding secretary Mrs. Verna Callan, recording secretary Mrs. Audrey McKee, first vice-president Mrs. Lillian Hopkin, second vice-president Mrs. Mabel Coulson and president Mrs. Jean Allen. The administrator reports the arthritic patients really enjoy the soothing comfort of a whirlpool bath. (Photo by R. Downs)

4-H girls display home made clothes to Nassagaweya WI

The May meeting of the Nassagaweya Women's Institute was held in the newly renovated Brookville Hall on May 16, with the President, Mrs. F. Pearce, in the chair. She welcomed four guests, and the 4-H girls.

The question, "What makes a good citizen?", was the subject of the roll call. The 17 members present gave their answers to it.

A fashion show of dresses, skirts, tops, pant suits and palazzo pants which had been made under the able direction of Mrs. Heist was staged by the 4-H girls.

Miss Susan Kidd, who had successfully completed 12 4-H projects, was presented with a silver cream jug and sugar bowl to honor her achievements.

Reviews speeches Mrs. Pearce, who had attended the W. I. Provincial Conference at the University of Waterloo, gave a detailed and informative report of it; stressing Mrs. Novlett's speech on "Responsibility and Freedom". She also referred to the address of Dr. Matthews of the University of Waterloo on "Student Growth".

Mrs. McKercher gave a talk on "Youth and Senior Citizens" and indicated that each group needed attention.

The annual tea, to be held at the home of Mrs. Andrew on June 2 was discussed; the 4-H girls will assist on that occasion.

"That a new and better world should begin with each of us" was a motto presented by Mrs. C. Freeman, citizenship convener, during her introduction of Miss K. McPhedran of Campbellville W.I. Miss McPhedran's subject was "Historical Research and Current Events of 1972." She ranged over a variety of historical and new items.

Mice cause strike As an example; Where was the first Canadian highway built? (Between Montreal and Quebec). Where were mice the cause of a strike? (In a factory in an Australian town where the mice

ate the workers' lunches.) How much does the average Canadian woman spend annually on cosmetics? (\$30.00) Who invented the talking doll? (Thomas Edison). A freak of the weather was a severe frost on June 11, 1972. Miss McPhedran had done a great deal of research and had presented the results of it very well. The members were warm in their praise and thanks.

Members had submitted samples of applesauce cake and oatmeal cookies which were

judged by Mrs. Stanley and Miss McPhedran. Mrs. Heist's applesauce cake and Mrs. McLaren's oatmeal cookies were the winners. Their samples were taken to the county annual which was held at Acton on May 23, where they were in competition with entries from other Institutes in the county.

Mrs. McLaren, courtesy convener, tendered the thanks of the members to the 4-H girls, the guest speaker, the judges and Mrs. Roberts, the social hostess.

Get together with a man you can trust.



He's your Texaco Farm Distributor. And he's an expert. Trust him to help you keep your equipment in top condition with top quality lubricants. He'll give you the most up-to-date information on equipment maintenance. And he'll do all this with excellent products at good prices. People trust their Texaco man. That's why they keep coming back. We trust you will too.

R.G. (BOB) CLEMENTS
835 Steeles Avenue, Box 143
Milton, Ontario
Phone 878-3431



FREE!

CAR WASH

When you fill up (12 gallons or over) or take advantage of our

REDUCED PRICES

8-12 gallon fill up, car wash 50 cents
4-8 gallon fill up, car wash \$1.00

25 cents Extra Friday, Saturday and Sunday

Bell Bros. Ltd.

409 Martin St.

Milton, Ont.

8 a.m. to 7 p.m. Mon. to Thurs.
8 a.m. to 8:30 p.m. Friday
8 a.m. to 6 p.m. Saturday
10 a.m. to 5 p.m. Sunday

CHARGE IT! BEEF SALE

Red Brand Beef Only

WE DO NOT SELL FREEZERS

90 DAYS SAME AS CASH
CALL COLLECT 844-0363

ALL PRICES INCLUDE

- (free of charge)
- Custom Cutting
- Wrapping and Labeling

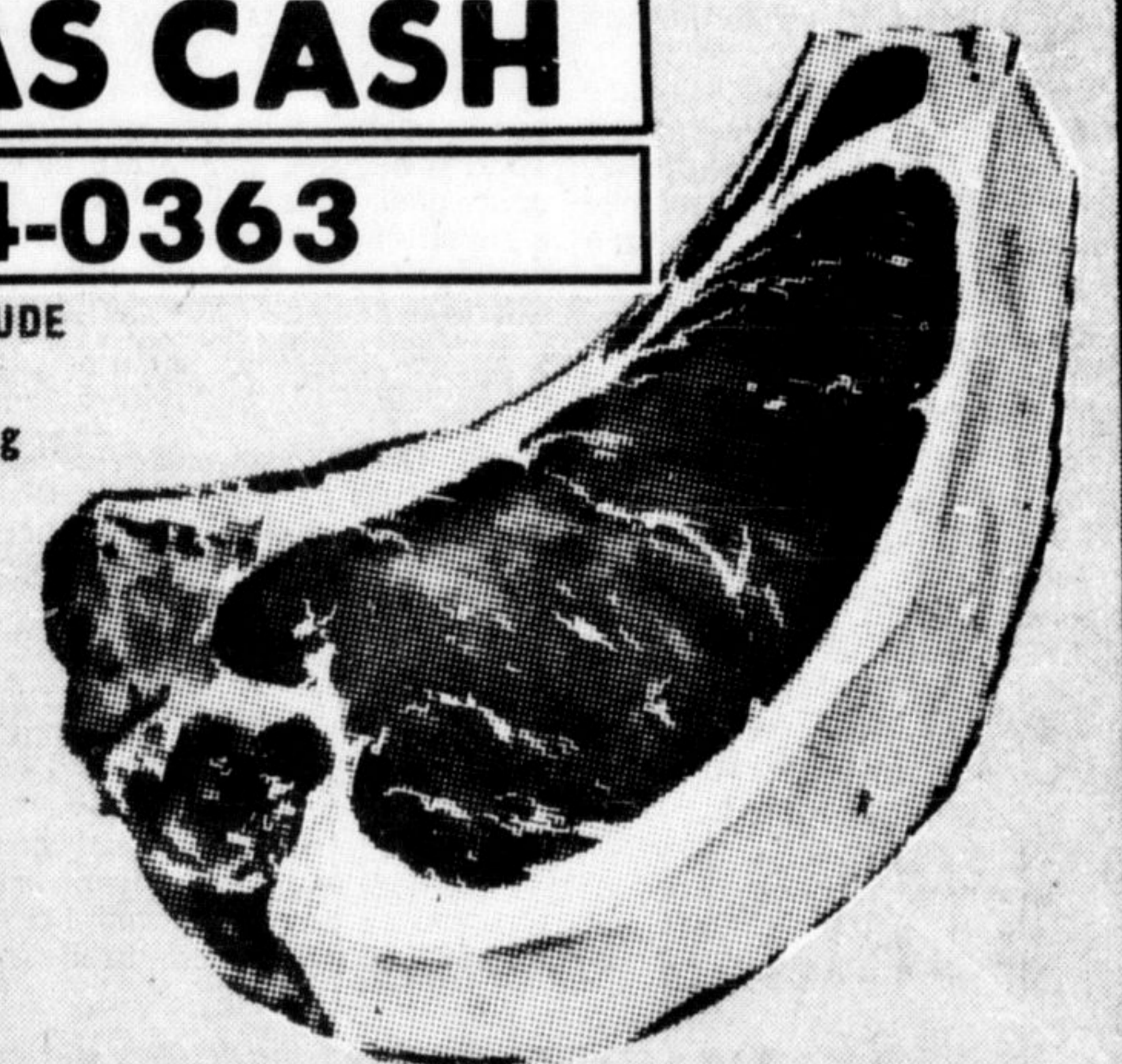
ORDER #1 - RED BRAND A STEAK & ROAST ROUND & LOIN

Your Choice of:

- T-Bones
- Porterhouse
- Sirloin
- Filets
- Top Round
- Swiss Steak
- Sirloin Tip
- Breakfast Steak
- Chip Steak
- Eye Round Roast
- Cube Steak
- Rolled Rump
- Ground Sirloin

10²⁵ per week

100 Lbs. at 89¢ per Lb. \$89 Total Price
Avg. Wt. 125-250 Lbs.



Guaranteed
All beef guaranteed for flavour and tenderness - If not satisfied all meat returned will be replaced.
NO TIME LIMIT!

ORDER #2 - RED BRAND A RIB & CHUCK SPECIAL

Your Choice of:

- Rib Steak
- Club Steak
- Prime Rib Roast
- Delmonico
- Prime Ribs
- Cube Steak
- Chip Steak
- Ground Beef
- Char Steak
- RB Steak
- Rolled Roast
- Chuck Roast
- Pot Roast
- Beef Patties
- Beef Stew
- Boiling Beef

16⁸⁷ Per Month
3 Months same as cash

Example
150 Lbs. at 49¢ per Lb. \$73⁵⁰ Total Price
Avg. Wt. 150-225

ORDER #3 - RED BRAND A BEEF SIDES

- Eye Roast
- Rump Roast
- Top and Bottom Roast
- Round Steak
- Cube Steak
- Ground Round
- Sirloin Steak
- T-Bone Steak
- Porterhouse
- Club Steak
- Sirloin Tip Roast
- Ground Sirloin
- Delmonico Steak
- Club Steak
- Rib Steak
- Rib Roast
- Blade Roasts
- Short Ribs
- Chuck Roast
- Pot Roast
- Chuck Steak
- Stewing Beef
- Ground Chuck
- Shin Meat

69¢ Lb.

300 lbs. at 69¢ lb. \$207⁰⁰ Total Price
Avg. Wt. 300-400 Lbs.

2-\$1⁰⁰ BONUS BUYS
WITH PURCHASE OF BEEF SIDE OR MORE
1 with purchase of hind Quarter

FREE 15 LBS. GRADE "A" FRYING CHICKENS
* For Opening Your Account

RED BRAND A's PRIMAL CUTS



ALL BEEF SOLD HANGING WEIGHT

10 LBS. FRYING CHICKEN	5 LBS. SPARE RIBS	5 LBS. HOT DOGS	5 LBS. SLICED BACON	25 PORK CHOPS 5 LBS.
\$1 ⁰⁰	\$1 ⁰⁰	\$1 ⁰⁰	\$1 ⁰⁰	\$1 ⁰⁰

Meat sold at hanging weight, Subject to weight loss.

W	Q.E. WAY	E
SPERS	ROAD	
COWAN AVE.	KERR ST	
REBECCA	STREET	
	LAKESHORE HIGHWAY	



RIVERSIDE QUALITY MEATS
338 Kerr St., Oakville
844-0363
OPEN 10 A.M. to 8 P.M. DAILY
Ample Parking Behind Store

(the best dressed beef in town)