

# House league teams list coaches, players

House league ball gets underway in Milton Monday with two games in action at Rotary Park. The following is the list of the five "A" league and the five T-Ball teams that will take part this season.

### "A" LEAGUE

**MCCUAIG INSURANCE**  
Coaches: Alex Roberts, Steve McCann.  
Players: R. Veenstra, P. Reichert, M. Reichert, G. Gilbert, C. Kleinsteuber, M. Shepherd, B. Crewson, O. Schmidt, N. McEachern, T. Currie, A. Eige, S. Marshall, L. Thibert and Robbie Jamieson.

**OPTIMISTS**  
Coaches: Hap Oates, G. Tieleman.  
Players: T. Coleman, D. Clarke, D. Boughton, B. Kendall, B. Benton, T. Nevins, M. Corbett, J. Wright, J. Tieleman, R. Oates, G. Nisbet, G. Sim, D. Simon and B. Rygersberg.

**LEGION**  
Coaches: Glenn Turner, Mike Nevins.  
Players: B. Maurais, B. Watkins, M. Yorke, D. McColeman, J. Turner, S. Richardson, D. Robinson, B. Twiss, R. Piccini, C. Sankey, J. Sankey, E. Lee, L. Fitzpatrick and C. Verstraete.

**CLEMENT PAINT AND WALLPAPER**  
Coaches: Brian Nevins, Charlie Alcock.  
Players: D. Morton, S. Reed, M. Horning, P. Cannon, M. Cannon, S. Blair, D. Riddell, D. Kemball, P. Brown, J. McLeod, J. Hobbly, M. Bradley, D. Hodgson and J. Galpeau.

**ROTARY**  
Coaches: To be named.  
Players: M. Ellis, J. Smith, J. Cartwright, G. Smith, J. Mazzarato, D. Larocque, S. Naykalyk, K. Sine, D. Tonelli, J. Cooper, C. Caputo and E. Loeprich.

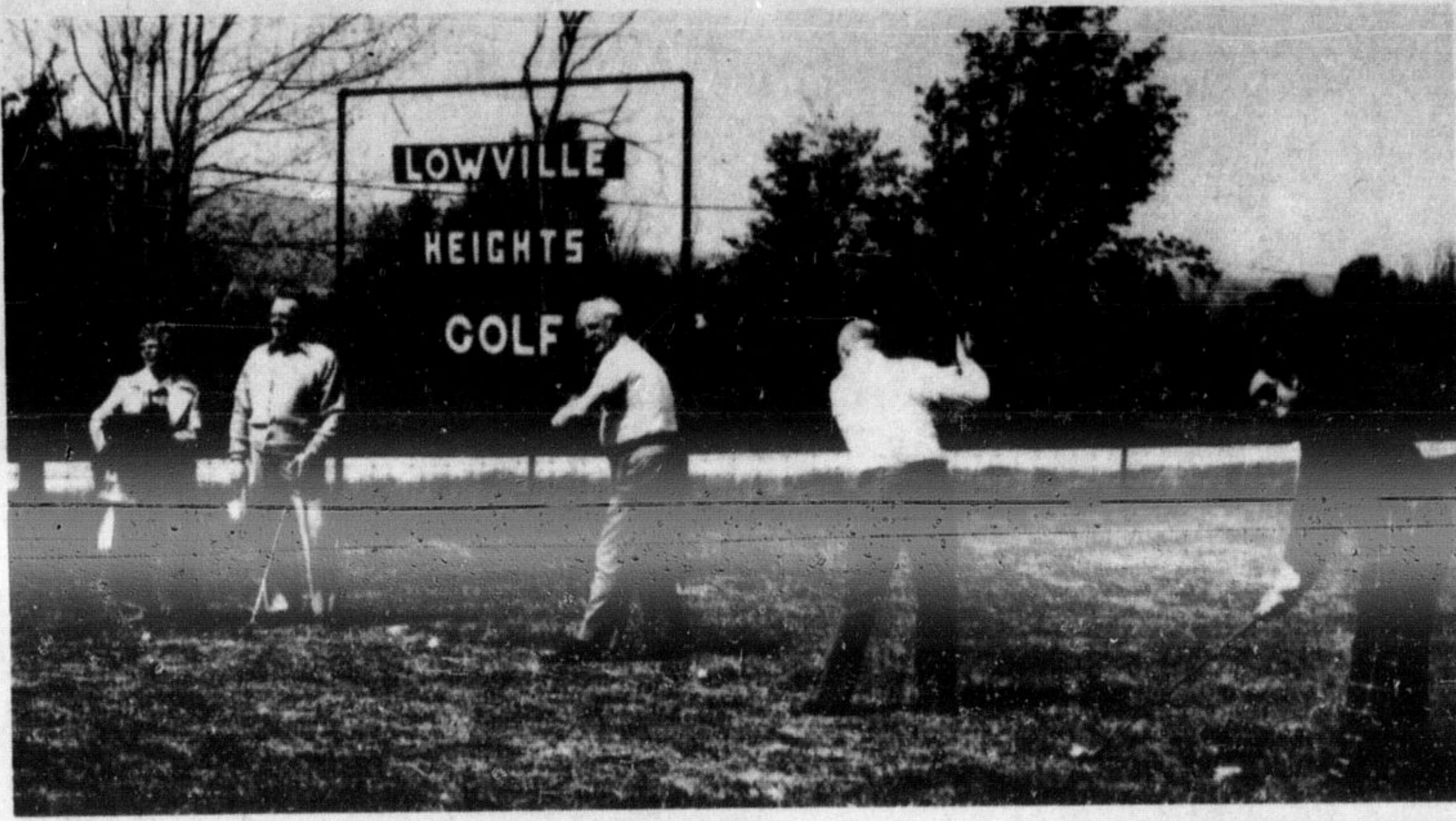
**T-BALL LEAGUE**  
**ELSLEY PHARMACY**  
Coaches: Bill Currie, Francis Baverstock.  
Players: J. Baverstock, R. Simpson, S. Barnes, P. Gawronski, D. Elsley, I. Jackson, G. Beaulieu, B. Morrison, G. Gaeton, B. Reichert, Ron Jamieson, H. Scannell, R. Rogers and M. Lanois.

**U.A.W.**  
Coaches: Jack Frosh, Keith Newell.  
Players: D. Sim, J. Frosh, B. Ellis, D. Wright, R. Orth, R. Newell, S. Jensen, M. Simons, D. Orth, R. Serafini, D. McConnell, B. Brush, G. Simons, S. May and P. Benton.  
**RICHARDSONS CHEV-OLDS**  
Coaches: To be named.  
Players: D. Neelands, S. McColeman, T. Houston, G. McBride, W. Smith, A. Powell.



**ANOTHER WHOPPER**, a brown trout weighing 3 3/4 pounds and measuring 20 inches in length, came from the waters of the Sixteen Mile Creek on Friday. Billy Churchill of 256 Pine St. said he was out fishing before supper and lost "a good one" but he went right back to the same spot right after supper and landed this beauty. He caught it in the creek just north of Main St., near the fire hall. Bill says the fish broke his line just as he went to land it, but it flourished beside the shore and he grabbed it with his hand.

(Photo by R. Downs)



**BURLINGTON'S NEWEST GOLF COURSE**, the Lowville Heights Golf Club, was officially opened Saturday by owners Mr. and Mrs. Gudgeon. The first nine holes are ready for play and the remaining nine will open later this year. All the holes are named after old communities in the Burlington-Nelson area and the two sections of the course

are named for Sherwood and Willmott, the surveyors who first surveyed Nelson Township. Above, Mr. and Mrs. Gudgeon look on as Oakville Reeve Allan Masson and Burlington Councillors Pat McLaughlin and Roly Bird tee off. Below, part of Saturday's opening crowd is pictured near the pro shop.

(Photos by R. Downs)

# House league sets baseball schedule

Milton house league ball swings into action Monday, May 28 at Rotary Park with two games in action. The clubs will play through the summer without the traditional holiday break this year.

"A" LEAGUE	DATE	"T" BALL LEAGUE
Optimists - McCuaig	Mon. May 28	U.A.W. - Elsley
McCuaig - Clements	Wed. May 30	Elsley - U.S.W.
Legion - Rotary	Fri. June 1	Richardson - Marios
Rotary - Optimists	Mon. June 4	Marios - U.A.W.
Legion - Clements	Wed. June 6	Richardson - U.S.W.
Rotary - McCuaig	Fri. June 8	Marios - Elsley
McCuaig - Legion	Mon. June 11	Elsley - Richardson
Clements - Rotary	Wed. June 13	U.S.W. - Marios
Optimists - Legion	Fri. June 15	U.S.W. - Richardson
Clements - Optimists	Mon. June 18	U.S.W. - U.A.W.
Rotary - Legion	Wed. June 20	Marios - Richardson
McCuaig - Optimists	Fri. June 22	Elsley - U.A.W.
Rotary - Clements	Mon. June 25	Marios - U.S.W.
Legion - Optimists	Wed. June 27	Richardson - U.A.W.
Clements - McCuaig	Fri. June 29	U.S.W. - Elsley
Optimists - Rotary	Mon. July 2	U.A.W. - Marios
McCuaig - Rotary	Wed. July 4	Elsley - Marios
Clements - Legion	Fri. July 6	U.S.W. - Richardson
Optimists - Clements	Mon. July 9	U.S.W. - U.S.W.
Legion - McCuaig	Wed. July 11	Richardson - Elsley
Rotary - Optimists	Fri. July 13	Marios - U.A.W.
McCuaig - Clements	Mon. July 16	Elsley - U.S.W.
Legion - Rotary	Wed. July 18	Richardson - Marios
Optimists - McCuaig	Fri. July 20	U.A.W. - Elsley
McCuaig - Legion	Mon. July 23	A.U.A. - Richardson
Clements - Rotary	Wed. July 25	U.S.W. - Marios
Rotary - McCuaig	Fri. July 27	Marios - Elmsley
Legion - Clements	Mon. July 30	Richardson - U.S.W.
McCuaig - Optimists	Wed. Aug. 1	Elsley - U.A.W.
McCuaig - Legion	Fri. Aug. 3	Elsley - Richardson
Clements - Optimists	Mon. Aug. 6	U.S.W. - U.A.W.
Rotary - Legion	Wed. Aug. 8	Marios - Richardson
Optimists - Rotary	Fri. Aug. 10	U.A.W. - Marios
Clements - McCuaig	Mon. Aug. 13	U.S.W. - Elsley
Legion - Clements	Wed. Aug. 15	Richardson - U.S.W.

# Plan bigger Dominion Day celebration here on July 1

Fireworks, a barbecue, band concert and free swimming are some of the events that will be part of an expanded Dominion Day celebration in Milton, members of the Milton Parks and Recreation Committee agreed last week.

The board has annually staged a fireworks display at Centennial Park, over the mill pond and this year it was suggested the program be expanded to include a barbecue in Rotary Park, the official opening of the new building there and free swimming in the Community Pool that day.

Councillors and members of other boards and committees will be asked to assist in the event if they are agreeable. Councillor Jim Kerr was named to head the celebration.

**Name supervisors**  
The board confirmed appointments to staff positions with Dick Hendricksen as parks supervisor and Debbie Kelly as program supervisor-secretary. Mr. Hendricksen has had several years' experience in parks maintenance and Miss Kelly is a graduate of Mohawk College in recreation. Bev. Wilton will be returning as playground supervisor, Ann Ruhl as pool supervisor and Lou Ann Lynde as day camp supervisor.

The recent announcement of two Youth in Action grants for the Recreation Committee has also expanded employment opportunities for those who had applied for positions. The \$1,400 grant will be for a program with retarded youngsters and the \$2,400 grant will be for a travelling playground program. Two board members were asked to investigate a request from 10 residents of Kingsleigh Court asking that the poplar trees ringing the park be cut down. The petition noted the tree roots were coming up in back yards many feet from the park and making gardening difficult. Burke McNeill and the parks director were to view the situation, and submit a recommendation to the board.

**Plant trout**  
A letter from the Ministry of Natural Resources pointed out 800 brook trout had been planted in Centennial Park Mill Pond on April 25. The letter indicated more would be added later if they were available.

The Board agreed to co-operate with the Minor "A" Pee Wee Optimists who won the all-Ontario hockey championship in providing individual trophies for the 13 team members.

Jim Strain sought suggestions on behalf of the Milton Chamber of Commerce for suitable locations for bicycle racks. Locations in Centennial Park and Rotary Park were suggested.

**Tour building**  
Prior to the meeting members of the Board toured the new building under construction at Rotary Park. Architect R. Traynor pointed out features and members noted the transfer of pool operating equipment was underway from the basement of the former building to an above-ground location in the new building. Work appeared to be progressing favorably and it was hoped the May 31 deadline for completion of the project and to allow preparation of the pool, would be met.

Despite the rain, Garry

Martins and two students from the Ontario School for the Deaf were also present in Rotary Park to present three new picnic tables to the Board. The tables are in appreciation to the town for the friendly relationship which exists between town and school. Councillor Art Melanson accepted the tables on behalf of the board and noted two of them would be located in Centennial Park. A formal resolution of appreciation was also endorsed by the board.

## False alarm

A fire at a Main St. home Thursday home turned out to be a false alarm call and firefighters think some prankster might be trying to pull their leg.

Firefighters remind pranksters the penalty for willingly furnishing a false alarm is up to two years in prison. The Milton brigade also attended several minor fires in the past week. Tuesday evening a car fire was reported in Nassagaweya, the same night a shed at Rotary Park caught fire, on Wednesday a fire was set in a school bus shelter on Walker's Line in Burlington, and on Friday a minor fire was reported in a gas oven at Cottage Delicatessen.

# Chamber publishes 10,000 directories

Milton Chamber of Commerce's new directory and quick facts booklet has been published and is now available for residents and visitors to the town.

The booklet lists industries, retail outlets, government offices, clubs and organizations and other pertinent details about facilities available in the town. Copies of the directory have been circulated to the 61 advertisers and other businesses in town. Each advertiser received 100 copies of the booklet. In all 10,000 were printed and copies of the directory are available from advertisers, Milton library, town hall, Milton post office, or the Halton County administration building.

Secretary-manager of the Chamber Ron Harris encouraged any business people who have inadvertently been omitted from the booklet to contact him so corrections could be made in future editions of the directory. It is planned to be an annual publication.

## Windows at school broken

About \$400 worth of windows at Holy Rosary School, Martin St. were smashed by vandals late Sunday night or early Monday morning. Milton Police are investigating.

Hard Maple is the main wood used for bowling pins.

**J. R. Currie O.D.**  
**OPTOMETRIST**  
BURLINGTON MALL  
TELEPHONE 632-7788

BEDROOM SUITES - LIVINGROOM SUITES - TABLES

# JOHNSON'S FURNITURE

FREE LOCAL DELIVERY • FREE PARKING AT REAR

A Great Gift... This Hi-Back swivel rocker, turns a full circle, and rocks as well. Beautifully covered in expanded vinyl, comes in many attractive colours. Padded foam arms, back, and seat over No-Sag springs. Designed and built for many years of comfort and service.

Also available in Herculan amazing new wonder material

## SALE PRICE \$49<sup>95</sup>

**JOHNSON'S FURNITURE**  
137 MAIN ST. MILTON PH. 878-3781  
SMOKER STANDS - POLE LAMPS - CHROME CHAIRS

**FLAMBORO SPEEDWAY**  
"WHERE THE GOOD GUYS RUN"

FEATURING SUPER LATE MODELS LIMITED SPORTSMAN and the ever-popular HOBBY DIVISION RACING FOR THE RED CAP \$10,000

POINTS FUND EVERY SAT. AT 8.00 P.M.

FOR INFORMATION CALL JOHN CASALE (BUS.) (416) 625-1599 (RES.) (416) 625-7884 or DOUG BOWERMAN (416) 385-4320

**CANADA'S FASTEST BANKED 1-3 MILE OVAL**

COMPLETE CYCLING NEEDS 10 SPEED SPECIALIST Milton's One Stop Sport Shop

Milano Sports	165.00
Eliminator	
Deluxe	119.95
Men's Touring	79.95
CCM Concorde	145.00
CCM Targa	105.00

All bicycles have a factory guarantee plus Brownie's special 3 month free service guarantee.

**TWO MAN TENT**  
zippered door with nylon screening, nylon floor, storm flaps, zippered rear window with nylon cover, aluminum poles, pegs and nylon cord  
total weight 3 1/2 lbs.  
REGULAR 33.95 NOW **28<sup>98</sup>**  
Savings on All Camping Supplies

We do repairs on most makes and models. Tubes, tires, accessories.

SPECIAL Bike Packing	
SLEEPING BAG	14 <sup>98</sup>
SPECIAL ADIDAS	3 <sup>25</sup> & up
Dew Worms	.35 A dozen .75 for 25

**Brownie's Sports Shop Ltd.**  
878-4602

**Silverline 73 Catalina 15T**

Outboard power / Roomy bow seats / Side storage racks / Walk-thru limited glass windshield / 3 position recliner seats of glove-soft vinyl over foam / Chrome running lights / Deck hardware / Hydro-Glide steering / Binnacle curtain / Flotation foam / Bow rails. Canvas optional.

**MERCURY 4 to 150 H.P. OUTBOARDS**  
Complete line of boats and motors on display for immediate delivery

EASY BUDGET TERMS  
Showroom Hours: Mon. to Wed. 9-8, Thurs. & Fri. 9-9, Saturday 9-5

15T Catalina \$1595.  
Convertible top included

**MILTON MARINE and SPORT**  
25 Commercial St. Milton 878-6521