

Parkway belt location concerns N. Burlington

North Burlington residents don't appear to be overly concerned about leaving the municipality of Burlington and joining with Milton in a new Central Halton borough of regional government—if comments at the annual meeting of Upper Burlington Citizens Forum Wednesday are any criterion.

at the Forum's annual and he didn't run into any objections from the 75 people in the audience. More concern was expressed over the location of the proposed parkway belt that will supposedly mark the boundary line to be established between the present Burlington and the new Central Halton unit.

announced soon and it is "a key element" in the Toronto-Centred Region concept adopted in 1971. The parkway will be a multi-service corridor forming a "demarcation line" between communities, providing a place for such services as freeways, regional transit, power lines and swaths of open land with buried pipelines. "It provides an opportunity to build in a land reserve for future use, at 1973

prices," he told the crowd. Only some of the lands within the parkway belt will need to be in public ownership, Kerr said. The remainder "will be subject to constraints to protect the overall public interest." Kerr suggested it would be neither easy nor expensive to make the belt a reality. "There are bound to be some individual property owners who will be affected by these plans and who may not enthusiastically endorse them," he ventured. "The government is deeply conscious of the rights of the individual in these matters and has no desire to trample anyone."

of our growth," Kerr concluded. "We are on the verge of another giant step forward which will reap immense benefits for our children and grandchildren." Asked by a woman in the audience why two-tier government was proposed when the schools boards got by on one tier, the MPP said the councillors in Halton opted for a two-level government. A school board going regional is "not as big and traumatic" as making a council a regional concern, he suggested.

be changed. The people of Burlington voted heavily to stay with Halton and "I can't fly in the face of that." Burlington should stay in Halton, he said, as there is "a certain esprit de corps, a certain pride". Hamilton is a great city with a great future and will likely grow to the west and south-west, Kerr suggested. The proposed regional government for Hamilton, a controversial issue right now, "will be acceptable in time," he felt.

Four new directors were nominated to join the executive of the Upper Burlington Citizens Forum, at the group's 14th annual meeting Wednesday. Formed in 1958, the Forum is one of the oldest continuing ratepayer organizations in this area.

Kurt Koster, Glen Campbell, Jack Ryan and Gord Myer were named to the executive this year. Returning members from last year's executive are G. Bradford Clements, Mrs. Lois Morris, Mrs. Verna Parent, Mrs. Anne Rudge, Mrs. Isobel Porth and Tom Foster. Clements was president in 1972.

The directors will meet soon to name their president, vice-president, secretary and treasurer and map out a program of meetings for the coming year.

Busy year

President Clements, reviewing 1972, noted several meetings were held with Bell Canada spokesmen concerning improved service in the north part of

Burlington. The Forum also submitted a brief on the proposed new official land use plan for the north, and conducted a mail survey to find out what type of service the residents want. The mail problem is being held in abeyance right now, until it is determined what changes regional government brings, he said.

The Forum also held two meet-the-candidates meetings, one prior to the October federal election and one before the December municipal election.

This year the Forum is extending an invitation to residents of East Flamborough Township to join the Forum. East Flamborough may join Burlington in a regional government.

—The Massey-Ferguson Red Nites snowmobile team will be performing in the fair grounds this weekend, as part of the Snow Festival festivities.



REGIONAL GOVERNMENT was the main topic of discussion Wednesday when George Kerr, provincial justice secretary and Halton West MPP was guest speaker at the annual meeting of Upper Burlington Citizens Forum. Kerr is pictured chatting with Claude Twiss and Mrs. Eric Gudgeon after the meeting. About 75 attended. (Photo by R. Downs)

OUR READERS WRITE:



WHY IS NEW SCHOOL NOT UNDER CONSTRUCTION NOW?

Dear Sir,
Milton is growing! Isn't it wonderful. Ah, this is progress. First came the large industries, they built factories and provided new jobs. Then came the smaller factories with more jobs, and along came one new subdivision and now there are three more subdivisions under development. New stores, an A & W and other new developments are falling in line, into one big master plan of rapid development. New jobs, new homes, commuters from the city, the little town of Milton is finally growing up and fairly smoothly too.

Once our new families are here and settled into their homes the children must start to school. School? Where is the school? Have you seen the school? The Halton County Board of Education tells us that a public school will open in 1974. Then they tell us we must have 90 per cent of the students living in the new subdivision before they will consider building a new school. The public school to be built for the new subdivisions is to accommodate 800 students. Therefore, 720 new students will have to be divided between the two existing schools. However, I

was told that construction of a new school will begin as soon as there are 500 students ready to occupy a new school. If this is true, the enrolment at W.I. Dick Public School will swell to over 500 students and J. M. Denyes Public School to over 700 students. W. I. Dick Public School is a very small school, built to accommodate 260 students at maximum capacity. It has seven classrooms, one kindergarten, a small office, a library, a nurse's office which will only handle one sick child, and two portable classrooms. This school is badly situated by a creek and on flood plain land. How will such a school handle over 500 students? This I would say is overcrowding, temporary or not!

According to the Halton Region Conservation Authority no buildings are permitted within 80 feet of the creek on flood plain land, yet the portables at W.I. Dick are 66 feet from the creek. How was this permitted? What right does the School Board have to place structures on flood plain land when private citizens cannot? The Halton County Board of Education has 53 portables according to Mr. Lindley. Are they all on flood plain land?

Why not put the portables on the new school site, around

permanent washroom facilities which could be incorporated into the new school when it is built. This would prevent the overburdening of school facilities and eliminating the cost of bussing children from the new homes to the two existing schools. Or why not be as progressive as you think you are, Halton County Board of Education! Move with the times and build the school along with the subdivision. Then when all the subdivisions are completed and occupied the school will be there and ready for action. Why is this school not under construction now?

Sincerely,
(Mrs) Margo Kent
Milton Ont.

Many advantages
Various studies agree on the need for larger units of government. "Strong, broadly-based local governments have many advantages over our present system."

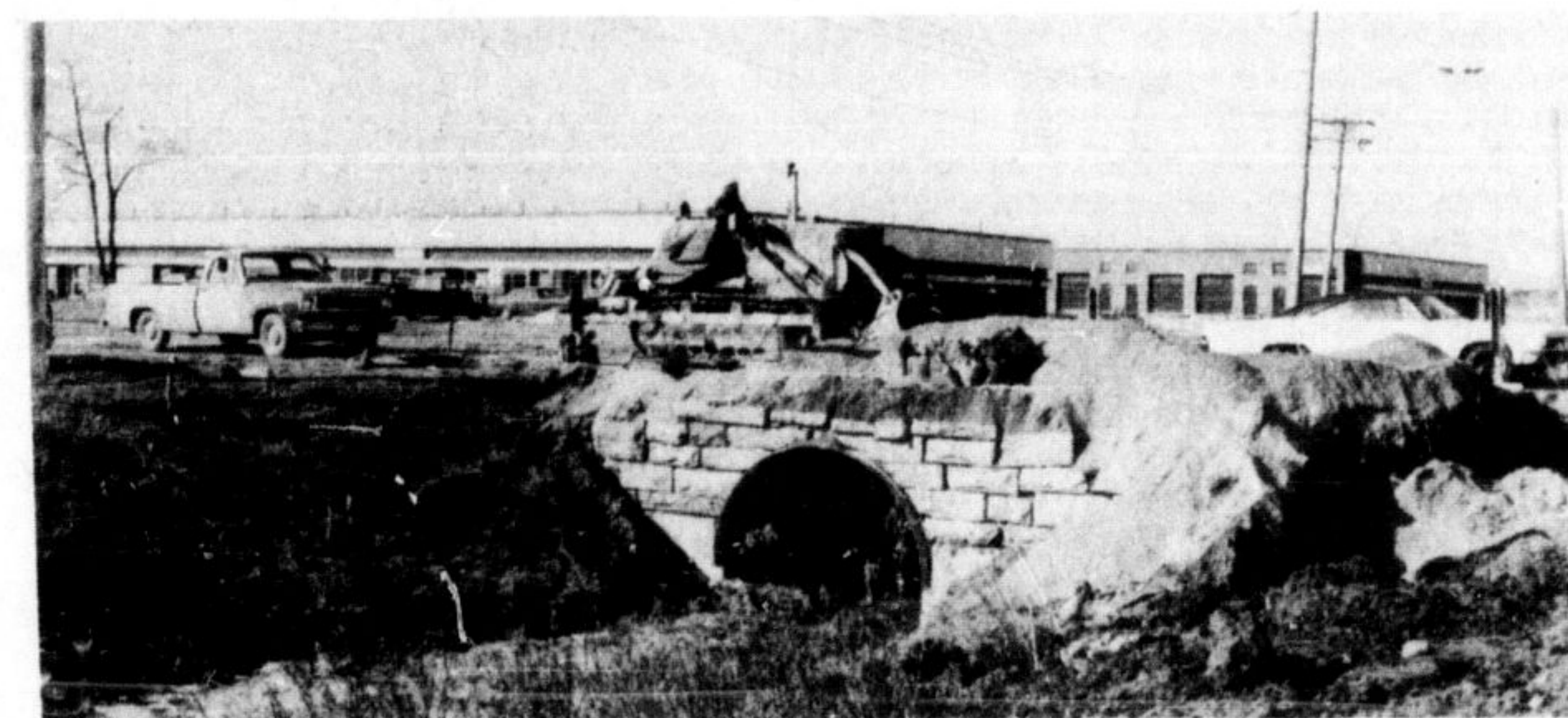
County school boards were a success, he noted. And for those who would cling to the present style of government, rather than face possible tax hikes, he suggested "Halton will get its share" of provincial grants to help it through the transitional period.

"I think Halton County has reached the stage in its development where we must all work more closely together, to ensure that all areas share the benefits

—Kelso was a busy spot on the weekend, thanks to the fresh fall of snow and a couple of cool but sunny days.

TWENTY-SEVENTH IN A SERIES

A Mark of Progress in Milton



Reconstruction on Steeles Ave. is a major project underway as weather permits. The widening of the road between Ontario St. and Martin St. is part of Highway 25. Major changes and installation of traffic signals will take place at the Martin-Steeles and Ontario-Steeles intersection. The project undertaken by the town in co-operation with the Department of Highways is a further mark of progress.

For a progressive Insurance Programme at competitive rates contact

McCuaig INSURANCE LIMITED

208 Main Street E., Milton 878-2894

If you're in a group pension plan start using the Government's new rules to save a bundle on income tax.

You likely know you don't pay income tax on the dollars that are put into your group pension plan. But did you know that the Government has passed new rules that can help you save an extra bundle of money on retirement savings?

Basically, you're now allowed to put an additional amount into a retirement plan with us. We register it with the Government and you enter it as another tax deduction, as long as the total deduction you claim for both plans doesn't exceed \$2,500 or 20% of your earned income.

For example, if you're paying \$700 into your present plan, you may be able to put an extra \$1,800 into our plan. The chart gives you an idea how much additional money you'll save.

To top it all off, this extra money you save can make more money. Essentially there are four ways you can do this. You can have us invest it in stocks. You can have us invest it for a guaranteed rate of interest. You can have us invest it in income producing bonds and mortgages. Or you can divide your money up using any combination of these three alternatives.

The beauty of it is: You can actually control the combination as your needs change over the years.

For instance, you could invest in stocks for several years, for long-term growth. And then as you get closer to retirement, you might want to switch

THIS YEAR YOU MAY ALSO WIN A \$2,000 BUNDLE OF LOOT TO BOOT.*



into it for several years, watch it grow, then take it out to replace normal income while he lazes in Majorca.

But let's face it, the real benefit comes from leaving it in 'til you retire. Moreover, we don't have a lot of salesmen out making calls, therefore you don't have to pay sales commissions.

This means, however, that you have to call us. Don't put it off. You can't deduct any deposits from your 1972 income after Thursday, March 1st, 1973.

If you're short of cash, talk to us about a low cost loan. The interest is deductible from your taxable income so you'll still save a bundle.

Make the rules work for you. Phone us now!

Annual Earned Income	Amount You Pay Into Your Pension Plan	Amount You Can Put Into Your Plan With Us	The Extra Bundle You Save*
\$ 7,500	\$ 375	\$1,125	\$292
10,000	500	1,500	401
15,000	750	1,750	618
20,000	1,000	1,500	658
30,000	1,500	1,000	490

*ASK FOR DETAILS AT PARTICIPATING BRANCHES

to a guaranteed interest rate. And you can get your money out without paying a penalty.

When you eventually choose to withdraw it, you have to pay taxes on it at that time, of course. But this is what's most important.

You pay tax on your money when you decide to pay it. This means later, when you're likely in a lower tax bracket.

This has led some to call this plan a tax shelter.

One fellow we know plans to pay

KAISER house siding... for the carefree beauty of it.

Enhances any home, old or new stucco, wood frame or brick.

- Never needs painting
- 20 year guarantee
- Choice of colours and finishes

LOW FACTORY PRICES ON OTHER ALUMINUM PRODUCTS

- Aluminum Doors
- Combination Windows
- Car Ports
- Aluminum Awnings

FEDERAL INDUSTRIES
OF CANADA
Foot of Forsythe St., Oakville
845-0318
OUT-OF-TOWN CUSTOMERS PHONE COLLECT

ACTON KINGHAM HILL ESTATES

\$17,700

only 25 minutes to Toronto

CONDOMINIUM TOWN HOUSES

CMHC MORTGAGES from 7 1/2 percent
CARRYING CHARGES from \$144.00 per month
including taxes and maintenance
ELECTRIC HEAT
LOW DOWN PAYMENT
STORMS & SCREENS—Fully Decorated

If you buy now... you can save \$5,000 while present selection still available.

FURNISHED MODELS NOW OPEN

ALTEO CONSTRUCTION LTD.
1/2 mile S. of Acton on No. 25 Hwy.
Phone: 853-0190 or 853-2680

Canada Trust
Main at Charles—878-2834