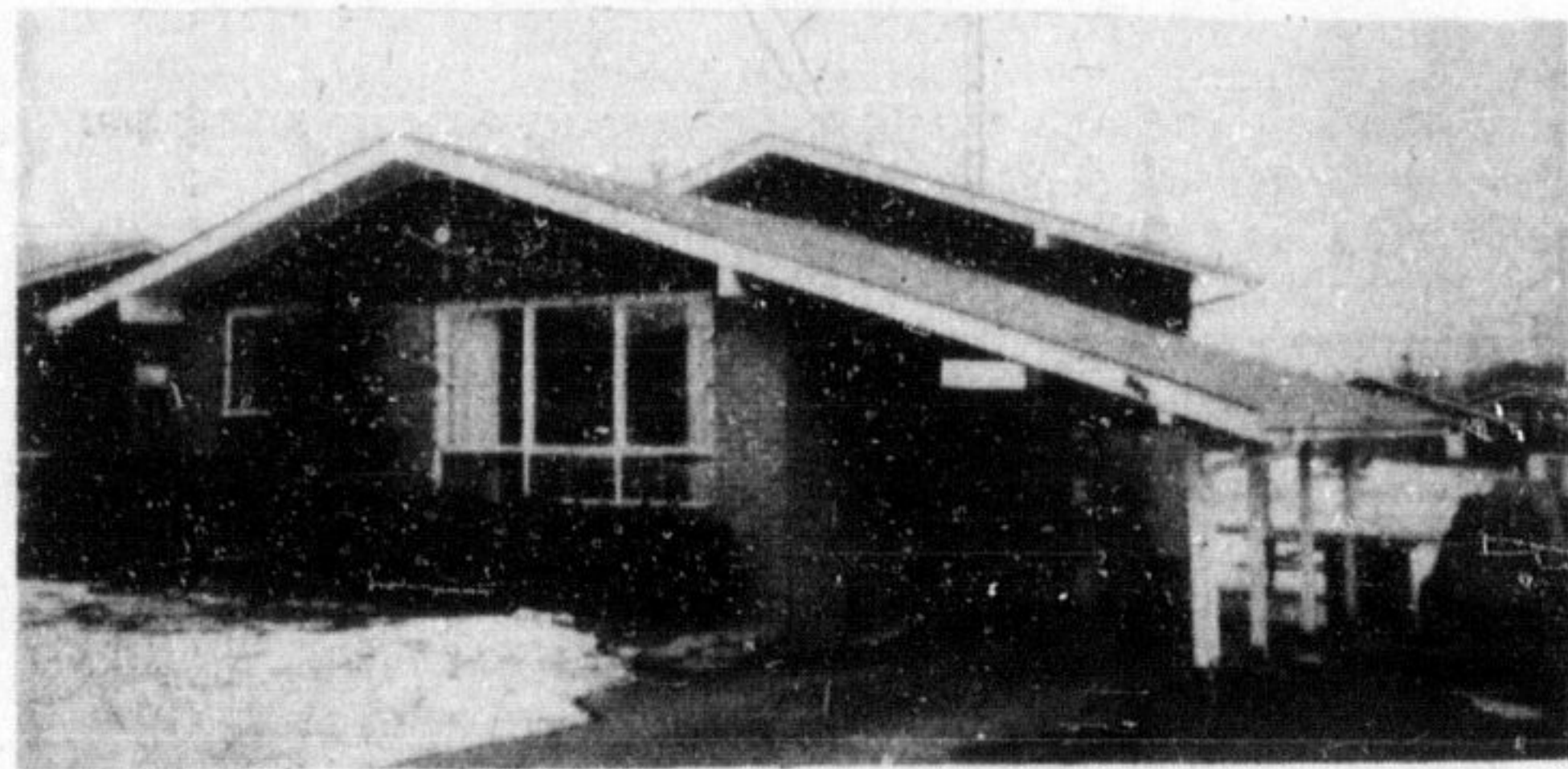




WE TRY HARDER



HOME OF THE WEEK

A 4 bedroom back split, situated on lovely street and close to both schools. Has just been reduced, so try your offer today with Jackie Beeton 878-9511.

COMMUTER SPECIAL

Six miles from 401 this 3 bedroom brick bungalow is situated on a corner half acre in the country. Try your offer of \$26,000. For further information call Jackie Beeton 878-9511.

HAVE IT BOTH WAYS

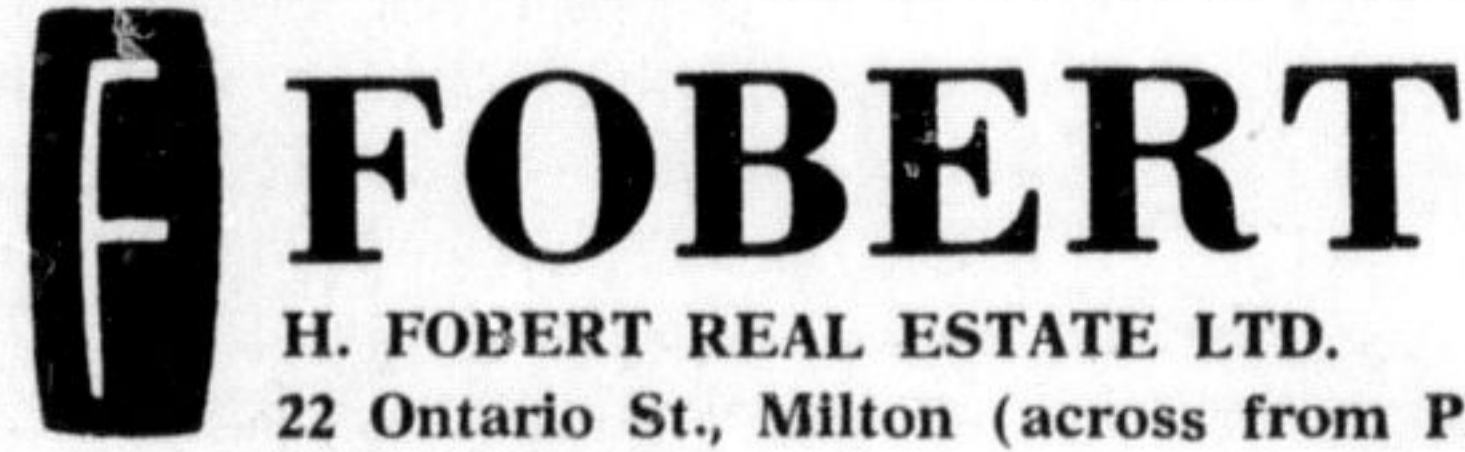
Situated on good sized lot with 100 ft. frontage on main street this 5 bedroom 2 storey brick older home lends itself to your way of living. Zoned MI (light industrial) the possibilities are multiple. Call Jackie Beeton to have a look today. 878-9511.

COUNTRY LIVING ON A BUDGET

Three bedroom brick tenement home, large kitchen and living room, taxes only \$96.00. Priced to sell at \$13,900. Call Ross Cescon 878-9511 or 878-2755.

COMFORTABLE STOREY and ONE-HALF

Composed of 3 bedrooms, separate dining room, broadloom in living room and hall, 4 pc. bath and full basement. Come see it today with Ross Cescon 878-9511 or 878-2755 17c38



22 Ontario St., Milton (across from Plaza)

IN THE MEANTIME -

For information on listed properties and for estimate of value, please contact one of our local reps., Mr. KEN MARSHALL at 878-6228.

SHARP -

is the only word to describe this immaculate home. You will have a walk out from patio doors to a cedar sun deck onto a ravine lot. This 3-bedroom side-split with a bath en suite and a large family room are only two of the many fine features of this beautiful home. Any purchaser would be proud to own such a comfortable home. Call Ken Marshall 878-6228 and let him tell you more. Priced at \$37,900

85 ACRE FARM -

just a few miles north of town. Spring fed stream flows diagonally across the entire property. Aluminum clad 4 bedroom house, modern kitchen and bathroom. Bank barn and drive shed in fair condition. Act fast, this farm will sell quickly \$68,000

HOME PLUS INCOME -

This brick tri-plex has a beautiful big owner's 2-bedroom suite with fireplace in the living room, separate entrance and sufficient income from the other 2 suites to help fight inflation. Excellent condition throughout. It could be the best investment you ever made, better see it today \$46,900 17c38

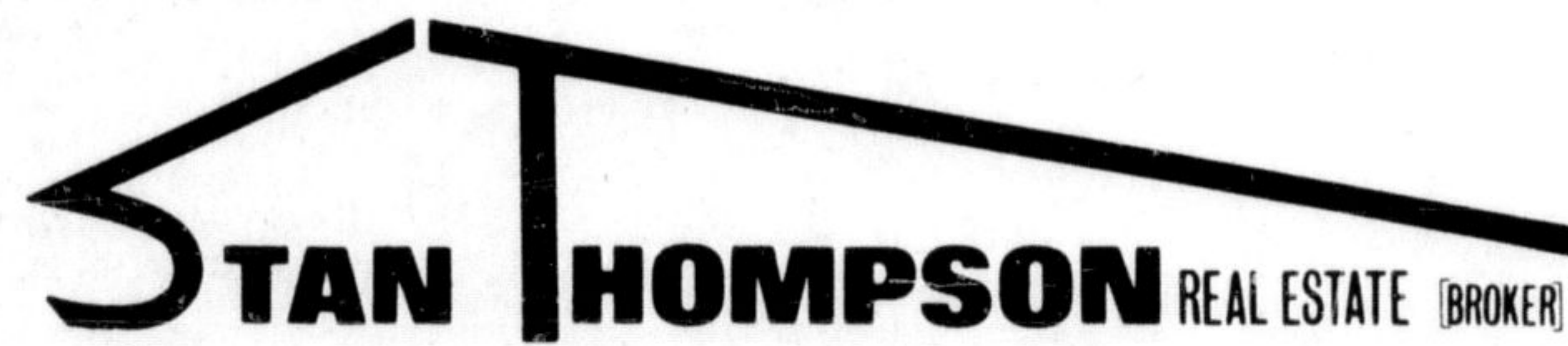
FOR ALL YOUR REAL ESTATE NEEDS

Phone: MAURICE BEATY - 878-6418

Representing

CANADA TRUST REALTOR HALTON and PEEL DIVISION

17c-tf



IN MILTON

Smart two bedroom brick bungalow in first class condition, private drive and nicely landscaped lot. Good residential part of town. \$26,900.

Choice building lot 60 x 132', recently separated. Complete with private hedging and shade tree. Listed at \$13,900.

Wanted for young executive, three bedroom home. Cash available. If you are thinking of selling and would like an evaluation, give me a call.

For Personal and Confidential Assistance with Your Real Estate Requirements call STAN THOMPSON - 878-2455

442 Woodward Ave. MILTON, ONTARIO Phone 878-2455 17c38



MOFFAT VILLAGE \$34,900

Desirable corner property. Large masonry building consisting of spacious 7-room apartment upstairs. Main floor ideal for body shop, garage or large workshop. 1 room used for confectionery store. Included, 2 gas pumps and 1,000 gal. tanks in ground. Good terms. Willie Essery (416) 854-9963 or United Trust (519) 824-5054.

NASSAGAWEYA - MOHAWK AREA - \$87,000

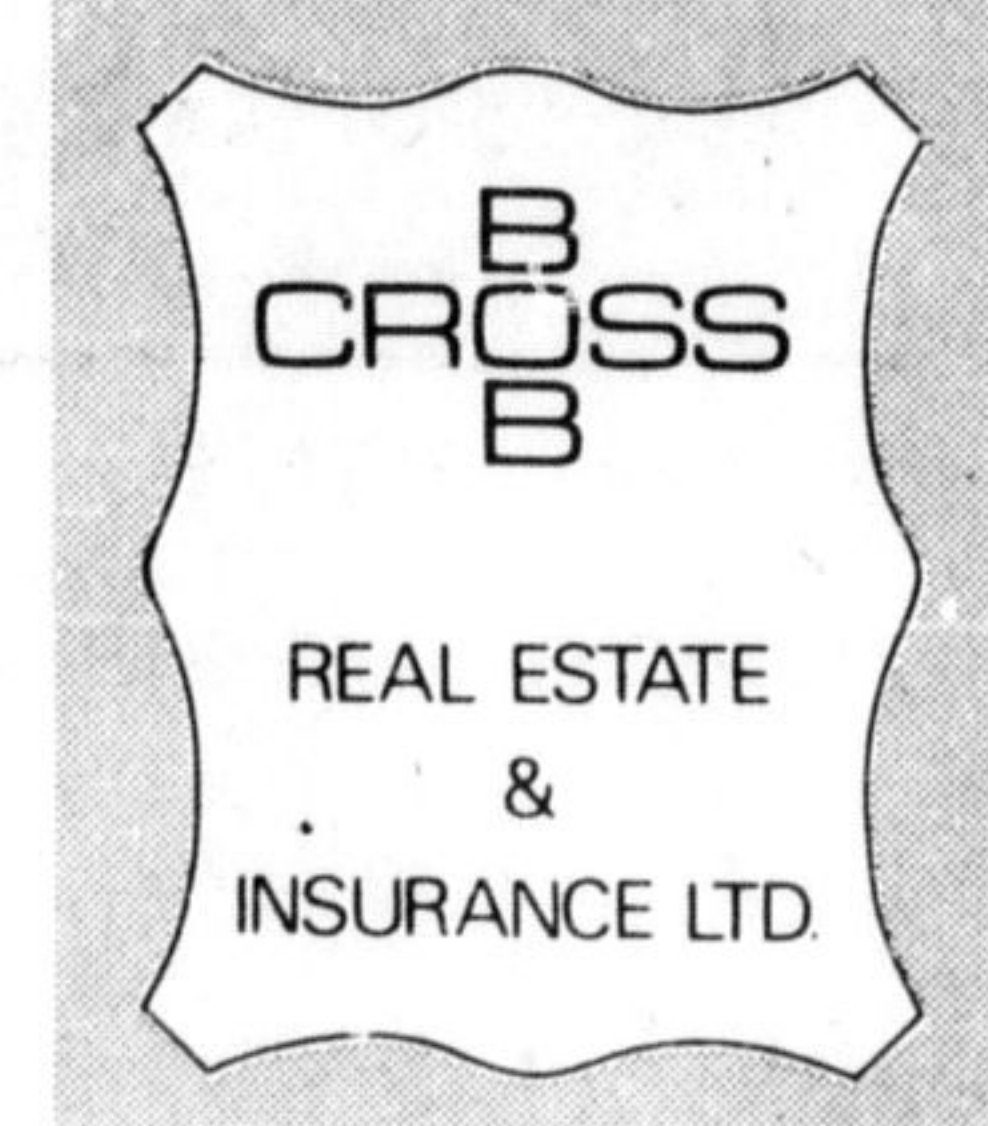
Rambling home, 100 acres, barn, scenic pond, nestled among evergreens. Ideal gentleman farm boasts huge living room & fireplace, 50' party room with stone fireplace and barbecue, separate dining room, den, double garage. Excellent financing. Willie Essery (519) 824-5054 or (416) 854-9963.

VILLAGE OF ROCKWOOD - \$25,500

Early Canadiana frame home, extensively renovated, edge of village, lovely living room, dining room, 3 bedrooms, attractive rec. room with patio doors. Willie Essery (519) 824-5054 or (416) 854-9963 evenings.

NASSAGAWEYA 4th LINE

\$31,900, brick raised bungalow, lovely 100' x 250' lot, large living room with brick fireplace, dining room with sliding doors to sun deck, master bedroom with bathroom en suite, double garage. Owner transferred. Willie Essery (519) 824-5054 or (416) 854-9963. 17c38



68 MAIN ST.

MILTON

"Broker"

FOUR BEDROOMS

This fine modern brick home is located on a 4 acre parcel of valuable land, on the 6 Highway north of 401, in the village of Aberfoyle, about a 15 minute drive from Milton.

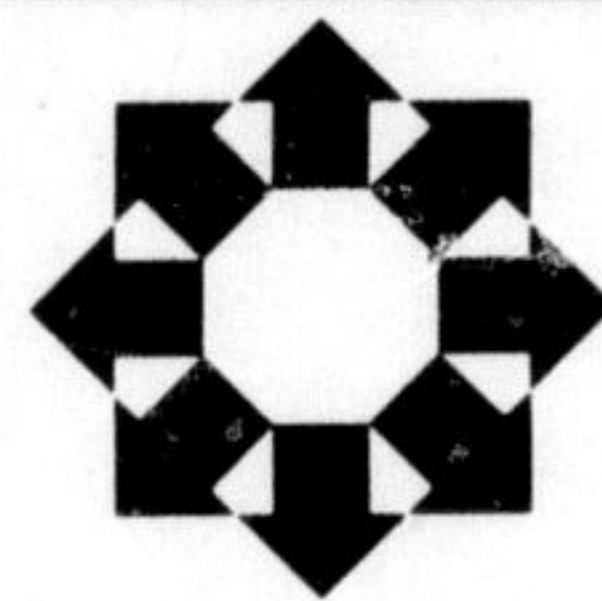
OFFICE

Small main floor office, located on Main St., broadloom, private entrance parking, etc.

NOBLE TOWERS

This modern apartment building is now near completion and several families have moved in. Phone or drop in today for details.

FOR PROMPT AND COURTEOUS SERVICE CALL 878-2888 17c38



D. GODDARD REALTOR LIMITED

ONLY \$27,900.

Where can you find a 6 - room 2 - storey home with beautiful modern bath, farm size kitchen (ready for your personal touch), 3 good size bedrooms, all newly decorated, & detached garage? I have just the one to show you! Situated on a fully fenced 160' lot, just 2 blocks from school. Don't hesitate on this one!

For further information Please "Give Annette A Call" MILTON 878-2051 TORONTO 742-3038

Brethour Realty Services (1971) Ltd.

Eden Mills

Under construction, raised bungalow, large living room, beautiful kitchen, dining room with sliding doors and deck, 3 bedrooms, 1 4pc. bath plus walk out basement with fireplace. Call: Irene Pries.

Campbellville

100 acres with meticulously cared for 5-bedroom brick farm house, large living room, separate panelled dining room, 20' x 17' kitchen with cupboards galore, 3 bathrooms & a main floor family room including a cosy fireplace. A large, well kept barn is equipped with box stalls and a panelled tack room. Offered at \$98,000 with good terms. Call: Les Bunker.

100 Acres

Nature's finest. If you want privacy, bush, a running stream and clean air with easy commuting, I have it and only \$550 per acre. For further details call: Les Bunker.

Campbellville

10 acres and a new 2 - storey home with attached 2 car garage. Offering 5 bedrooms, 3 bathrooms, large living room with a brick fireplace, separate dining room, family size kitchen and main floor family room. New 25' x 30' metal barn and spring fed pond. Offered at \$55,900. Call: Les Bunker.

Bowling Alley

6 automatic lanes, recently finished, interior of building redecorated, good return on investment, league and open play. Excellent terms with renewable clause on lease, heat included. Call: "Doc" Gowland.

Commercial and Industrial Property Contact: "Doc" Gowland.

Brethour Realty Services (1961) Ltd. REALTOR

Milton 878-4121 Toronto 826-3085 17c38

FIND

The way to extra cash by selling items no longer in needed.

CHRISTIE & WOODS REAL ESTATE LIMITED BROKER

189 Main Street MILTON

Town

INCOME PROPERTY Fully rented building, main floor, commercial, plus 4 apartments, excellent downtown location. Terms.

Well established downtown business in a fast growing community, showing a good net profit in food business.

Country

REDUCED \$26,900 full price, 3 - bedroom room home on half acre, living room with dining area, full basement, walk out basement, border of evergreens. Call Yvonne Christie for appointment 878-2095.

BUILDING LOTS

Out of Town 100 x 200, \$7,500. 150 x 200, \$9,900. 1.8 acres, \$12,900. No capital contribution required on this lot. Call Myrtle McClellan 878-5190 or 878-2095.

WANTED

I have several clients with excellent cash equity, waiting for homes in Milton & surrounding area. If you are thinking of selling, please contact Myrtle McClellan 878-5190 or 878-2095.

CALL 878-2095

If Busy 878-6057 17c38

19 LEGAL

NOTICE

W. M. Seager Security Consultants Limited

NOTICE is hereby given that W. M. SEAGER SECURITY CONSULTANTS LIMITED intends to dissolve by filing Articles of Dissolution with the Ministry of Consumer and Commercial Relations pursuant to The Business Corporations Act. DATED at Milton, Ontario, this 29th day of December, 1972.

EARL G. BLACK, Secretary Treasurer. 19c39

Notice to Creditors AND OTHERS

In the Estate of JAMES SYDNEY MASON, late of Milton, Ontario, retired Manufacturer's Agent, deceased.

ALL persons having any claims against the above Estate are required to send full particulars of such claims to the undersigned executor on or before the 7th day of February, 1973, after which date the estate assets will be distributed, having regard only to claims that have been received.

THE CANADA TRUST CO., 110 YONGE ST., Toronto 210, Ont. by: HUTCHINSON AND THOMPSON, 219 Main St., Milton, Ont. 19c39

20 AUCTION SALES 20 AUCTION SALES

AUCTION SALE

For Mr. and Mrs. DEWAR THOMSON

To be held at their residence, 125 Lydia Ave., Milton, on SATURDAY, JANUARY 20 at 12 Noon

APPLIANCES - R.C.A. Victor 21" TV; R.C.A. Radio and record player; Frigidaire refrigerator; Westinghouse electric stove; Stewart winger washer; Hoover vacuum; Singer electric sewing machine; grandmother's clock, OK; compact (McGraw Edison) air conditioner.

FURNITURE - Oak bed and dresser; dresser and mirror; 2 side chairs; library desk; bookcase; green gentleman's occasional chair; beautiful pine buffet, 6' long; set of 5 maple side chairs, refinished and re-caned; gateleg drop - leaf dining table; small serving table; Windsor type armchair; knee-hole desk, good one; cherry chest of drawers, good; wicker rocker and chair; 5 lawn chairs; wardrobe; dressing table; chest of drawers; 2 small desks; spool bed, good one; Jenny Lind type bed; small bookcase; burled walnut chest of drawers; commode chair.

BOOKS - 25 books by Sir Please Note: This is an excellent, clean offering. Owners have sold their home and are giving up housekeeping.

TERMS: CASH. No reserve. Not responsible for accidents. 20c38 MAX STOREY, Rockwood, Auctioneer.

Notice to Creditors AND OTHERS

In the Estate of WILLIAM GEORGE MORTON, late of the Town of Milton, in the County of Halton.

All persons having claims against the Estate of WILLIAM GEORGE MORTON, late of the Town of Milton, in the County of Halton, retired, who died on or about the 18th day of August, 1972, are hereby required to send full particulars of such claims to the undersigned on or before the 26th day of February, 1973, after which date the Estate assets will be distributed, having regard only to the claims which have then been received.

DATED at Milton this 5th day of January, 1973.

RUBY STELLA MORTON, Executrix. FUNK & FLANNAGAN Barristers & Solicitors, 207 Main St., Milton, Ont., her solicitors herein. 19c39

Notice to Creditors

In the matter of the Estate of ROBERT HENRY ERVIN, late of the Town of Milton, in the County of Halton, Retired Laborer.

ALL persons having any claims against the Estate of the above named deceased, who died on or about the 28th day of November, 1972, are required to send notice of the same to the undersigned solicitors on or before the 23rd day of February, 1973, after which date the distribution of the estate will be made with regard to claims on notice.

DATED at Milton this 12th day of January, 1973.

HUTCHINSON & THOMPSON, 219 Main St., Milton, Ontario. Solicitors for the Executors 19c40

If the owner of the 1965 BLUE METEOR CONVERTIBLE has not picked up car by January 31st, it will be sold for repairs and storage cost.

BONIN'S ESSO 5 Main Street Milton, Ont. 19c40

20 AUCTION SALES

For Complete Auction Service

Chris A. Schouten AUCTIONEER

Sales of all types.

Sales conducted anywhere.

Tel. 878-2576

R.R. 3, Milton, Ont. 20c-tf

Ward Brownridge

Licensed Auctioneer

Farm - Livestock

Furniture Sales

Phone 878-6730

Appraisals - All Types 20c-tf



During their inaugural meeting on Monday, members of Nassagaweya Township Council:

-Set the interim tax levy at 34 mills (up two from last year) and set the due dates at Feb. 28 and April 30.

-Agreed to draft a resolution to the Task Force on Policing,

complaining that the OPP which patrol the township cannot enforce township by-laws.

-Discussed the possibility of an official opening for the new township garage this spring.

-Named Deputy Reeve Jim Watson to sit on Nassagaweya Planning Board in place of the reeve, who is automatically an ex officio member.

-Selected Councillor Cal McIntyre to head the roads, personnel and office administration committee, with Deputy Reeve Jim Watson as a committee member; and Councillor Art Gibson to head the property, building development, finance and planning committees with Councillor Russell Powduki assisting. Reeve Anne MacArthur is a member of both committees.

-Adjourned to meet again on Jan. 22.

20 AUCTION SALES

AUCTION SALE

At the Agricultural Hall, Milton

SATURDAY, JANUARY 27

At 12.30 p.m.

150 antique items plus household effects from a local apartment. We can still accept a limited number of good consignments.

Full listing next week.

WARD BROWNRIDGE, Auctioneer. 20c38

AUCTION SALE

For JACK KELLY

At the farm, Lot 22, Con. 7 of Eramosa Twp., on Erin-Eramosa Town Line (County Road 26), 3 miles north of 24 Highway, midway between Guelph and Erin, on

SATURDAY, JANUARY 27 at 12 Noon

CATTLE - 6 B.W.F. cows; 1 Hereford cow; 2 Shorthorn cows; 2 Holstein cows; above cows are bred to a Polled Hereford bull and are calving from March 1 on; exact breeding dates on sale day. 4 B.W.F. steers, 900 lbs.; 4 B.W.F. heifers, 800 lbs.; 3 B.W.F. calves, 600 lbs.; 6 white faced heifers, up to 500 lbs.; above cattle in real good condition.

HOGS - 3 York sows, bred Nov. and Dec.; 1 York sow with 12 pigs at side, 7 weeks old; York hog, good breeder.

TRACTORS AND IMPLEMENTS - Massey Ferguson rotary tractor with I.H.C. loader, good one; Cockshutt No. 70 tractor, OK; Massey Ferguson rotary tractor mower, 5' cut, 1 year old; M.H. 3-furrow trail plow; F.B. 2-furrow trail plow; David Brown 3-furrow plow, 3 p.h.; wheeled cultivator on rubber, 19-tooth; Case double disc; M.H. fertilizer and grain drill; 5 - section Harrows; steel roller; New Idea No. 12A manure spreader; John Deere semi-mount mower, 7 ft. board; M.M. side rake; New Idea side rake; Allied bale elevator near new; 2 farm wagons with flat racks; George White three-

shing machine, 24" x 42", 100' drive belt. TRUCK - 1953 Ford half ton pick-up, runs okay, in real good condition. MISC. - Fanning mill with motor and treater; Cockshutt chopper; 50' drive belt; 2 grain augers, 12" and 18" with motors; Wood's oat roller; 1 h.p. electric motor; circular saw; Pioneer No. 620 chain saw; extension ladder, 36'; steel water trough; poultry feeders, waterers, egg washer and baskets; set of high beam scales; Viking electric cream separator; stainless steel; garden robo-tiller; power lawn mower; rubber tired wheelbarrow; 2 tractor tires and rims, 12" and 24"; light farm trailer; usual small tools.

FEED - 20 tons of heavy mixed grain; 1,500 bales of choice mixed hay; 1,800 bales of baled straw; 9 bags fertilizer; 30 lbs. mixed grass seed.

FURNITURE and ANTIQUES - Settee and chair; steel crib; sewing machine; 2 beds and 2 dressers; kitchen cupboard; 4 wooden chairs and table; oil lamp; lanterns; crocks etc.; grain cradle; Gilson wringer washer; large iron kettle and a small one.

TERMS CASH.

No reserve. Farm sold.

Lunch counter. Not responsible for accidents.

20b29

MAX STOREY, Rockwood, Auctioneer.

AUCTION SALE

OF FORD TRACTOR, FARM IMPLEMENTS, HOUSEHOLD FURNITURE, SOME ANTIQUES, GARDEN AND HAND TOOLS, GLASS, CHINA, APPLIANCES, MISC. ETC.

At the farm, located on the 6th Line of Nassagaweya Twp., Con. 6, Lot 19, From Guelph take Hwy. 7 east to Blue Springs Rd. south approx. 5 miles. From the Guelph Line take 20 Siders Rd. east approx. 3 miles, then south half mile. From Hwy. 25 at the Speyside store, go west 2 miles, turn north on the 6th Line, 1 mile.

For Mr. and Mrs. MURRAY HAYWARD SATURDAY, JANUARY 20 at 12 Noon

Ford N8 tractor, excellent condition, engine completely overhauled just recently, rubber like new, with chains; snow thrower, 3 p.h.; P.T.O. barnyard scoop; barnyard scraper; Deere cultivator, 8 ft. with duck feet and set of narrow teeth; Ford double disc, 8', 3 p.h., 24-plate Ford 2 - furrow plow; 2 - wheel farm trailer; cement mixer; 20' bale elevator (chain type) with motor, like new; circular saw; hay mower 7' cut, 3 p.h.; heavy duty extension bar; Duro pressure pump, motor, 30 gal. tank, complete unit; rubber tired wheelbarrow; 32' extension ladder; farm wagon; Austin car, selling as is.

17 2-year-old hens, laying good; approx. 150 bales of two year, 2nd cut mixed hay; quantity of timbers & other lumber; quantity of fireplace wood (cut to length).

LAWN, GARDEN and OTHER TOOLS, MISC. - 7 h.p. Gibson 36" cut riding lawn mower; 2 power lawn mowers, 20" and 18" blades; push mower; two tarps; 2 lawn fertilizer spreaders; 14 cow stanchions, complete; quantity of steel fence posts; 7 rolls of snow fence approx. 450'; roll of barbed wire; quantity of patio flagstone; 2 sets of rope block and tackle; small tire vulcanizer; some drums; quantity of baskets and bushel hampers; 12 foot step ladder; iron

other small tools and misc.; old 22 rifle; Savage 22 rifle with telescope. HOUSEHOLD FURNITURE - Chesterfield and chair; walnut coffee table; ping pong table; telephone table; bookshelves; end table; roll - away aluminum bed; small oak table; single continental bed; night table; 9 - drawer dresser; bookcase; double bed and mattress with matching triple dresser; 2 rugs, 9 x 12 and 6 x 8 1/2; record cabinet; 2 basket chairs; 2 bronze kitchen chairs; other odd chairs; floor lamp; table & bedroom lamps; 2 wall mirrors; clothes hamper; kitchen cupboard.

APPLIANCES - Wood's deep freezer; cross - top Frigidaire self-defrosting frig., green, good as new; Frigidaire 4 - burner stove, all automatic, green, good as new also; mantel radios; kitchen clock; heater fan; other small electric appliances; floor polisher; baseboard heater; glass; china; set of silver for 6; stainless steel cookware; Kenmore vacuum cleaner.

ANTIQUES - Refinished cradle; pine blanket box; steamer trunk; 6 black back chairs; other odd chairs; brass desk lamp; old footstool; refinished oak reclining chair; pine extension table with 6 leaves; 1 large, 1 small pine cupboard; butter ladle.

TERMS ARE CASH. No reserves. Farm is sold, owner moving. Owner or auctioneer not responsible for accidents. Lunch by the Ladies of Ebenezer Church. Order of Sale: Household goods at 12 noon, followed by wagon lot, misc. and farm implements. 20b83 Auctioneer: CHRIS A. SCHOUTEN 878-2576.