

Announces master plan for Bronte Creek Park

A master plan for Bronte Creek Provincial Park — Ontario's first urban-oriented park — was announced this week by the Hon. Leo Bernier, Minister of Natural Resources.

Situated at the Queen Elizabeth Way and Highway 25, the 2,000-acre site in the Burlington-Oakville area is just 25 miles from Toronto and will provide a major recreational centre for the

more than 3,000,000 people in the Toronto-Hamilton urban areas.

"Park development will be phased over a number of years and during this period many people will be able to make further contributions to its success, both formally and informally," commented Mr. Bernier. "We anticipate that many facilities will be available by July, 1973." The park will have

a "unique atmosphere" that harmoniously balances activities, facilities, horticulture and natural environment.

Preserve gorge

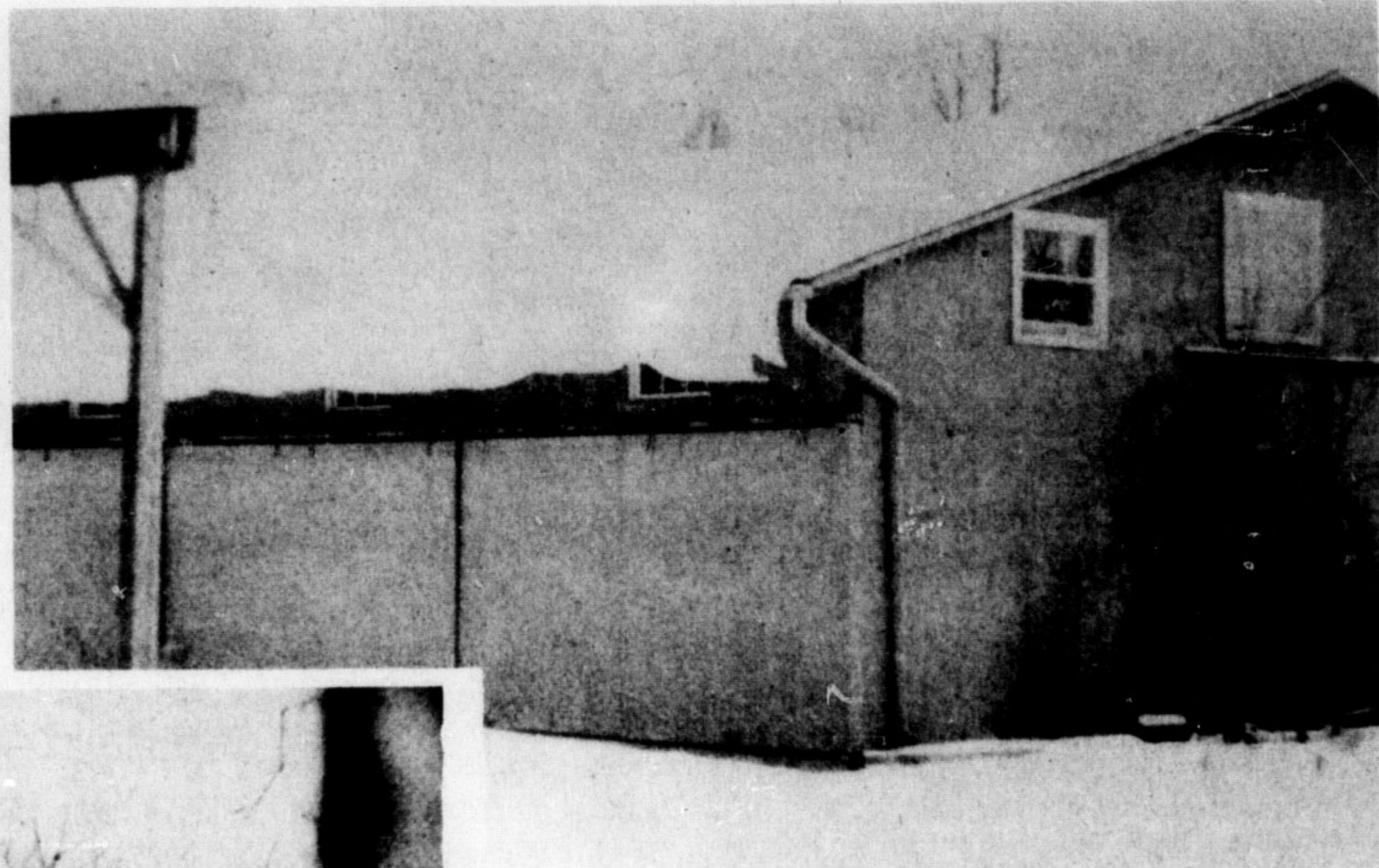
The plan calls for two distinct roles to be played by the park. The natural environment of the deep and spectacular Bronte Creek gorge will be preserved and trails, outdoor exhibits,

nature study areas and scenic lookouts will ensure the protection of its natural values. In a second role, the park will provide facilities on adjacent tablelands including swimming pools, picnic shelters, tennis courts, riding stables, bicycle paths, arts and crafts centre and playgrounds. During the winter, snowshoeing and cross-country skiing trails will be available along with toboggan slides and skating rinks.

The Master Plan also calls for several "urban-oriented" park innovations:

- a mini-bus internal transportation system that eliminates the need for movement of automobiles beyond entrance parking lots;
- supervised day-care centres to permit parents full enjoyment of activities geared for adult interests;
- a demonstration farm where visitors can help in cultivation of crops, groom horses or participate in vegetable and fruit canning.

operation with Project Planning Associates Ltd. Engineering, architectural and site development designs have been recently reviewed and approved by the advisory committee.



(Photo by S. Dills)



Snows of winter turn greens to white



"It comes through my feet"

Mrs. Sprowl divines water

by Jennifer Barr

Rain drizzled on a grey-haired lady in gum boots, tramping around the field with a forked metal rod. Suddenly her arm started to flair wildly, as if on a string, and she stated calmly:

"There are two crossed streams here. You'll find water 20-25 feet down but the rock is over 100 feet down. There's a small spring at 150 feet and two larger ones at 165 feet and 175 feet."

Mrs. John Sprowl of Acton, one of the few remaining water diviners, was at it again.

The occasion this time was erection of a new home on the Rockwood sideroad property of the Mac Barr's and the accompanying search for a well site.

Mrs. Sprowl is very well-known for her activity. She is responsible for more wells than she can count.

She first became aware of her inherited power at the age of

eight and has taken it for granted ever since. A well-driller husband and information from the University of Guelph have helped Mrs. Sprowl to learn much about land types and water tables, but most of her knowledge comes from experience.

However, there is no explanation for the uncanny antics of her right arm as she divines underwater streams or her ability to predict accurately depths at which water will be found.

(Continued on Page Eight)

MARIO'S PIZZERIA

152 Mill St. 878-3202

NEW YEAR'S HOLIDAY HOURS

Closed Dec. 27, 31
Open from 5 p.m. — 2 a.m.
Dec. 28, 29, 30
Closed Jan. 1, 2.

ADVANCE ORDERS ACCEPTED 878-3202

HAPPY NEW YEAR TO ALL



Whee! A jumping New Year is about to begin, but before we push ahead we want to express to you, our deep gratitude for your patronage.



NORTHEND DATSUN

235 Steeles Ave.

878-2471

PLEASE NOTE

THERE WILL BE

NO GARBAGE PICKUP

MONDAY - JAN. 1

NEW YEAR'S DAY

PLEASE REMEMBER
Collection Normally Made on Monday
Will be Made on Next Regular Pick-up Day
For Your Area

CHRISTMAS TREE PICK UP

STARTS TUESDAY, JAN. 2

Please do not place trees out for collection before this date to prevent them blowing away. Collections will begin at 8 a.m. on JANUARY 2.

P.S.—Plastic Garbage Bags are available at the Town Hall for Only \$2.50 for 50 bags — More Sanitary - More Convenient to Use.

BRUCE McKERR,
Works Superintendent

moto-ski

SALES and SERVICE

Special Clearance on '72 models



LISGAR TWIN SEASONS

826-3609

Winston Churchill Blvd.
S.S. of 401—5 miles S. of Norval