



TO THE MOTORIST, snow is slippery roads. Pedestrians shun it and children love it but the photographer sees the white stuff as a work of art when it settles around thorny bushes such as

these. The season's first snowstorm descended recently catching most of us unaware but photographer Jim Jennings saw it as soft, billowy cotton in this picture.

## Tight budget for hospital province is cutting costs

Milton District Hospital Board will have to operate on a "very tight and limited budget", Board members learned at a recent meeting.

Ontario Health Minister Dr. Richard Potter has declared a one year moratorium on provincial aid for new or expanded active-treatment facilities. The budget squeeze also affects the expansion of colleges and universities.

In a letter addressed to Board Chairman O.K. VanSickle, Potter said he was relying on the Board "to ensure essential economies are made without prejudicing the standard of care you have achieved."

The Minister pointed out the hospital would have to budget itself because only limited funds will be available "and mainly to complete new projects already started."

As a part of this budget squeeze, some reduction in the total volume of in-patient services will be necessary, the Board members learned.

Essential services  
In his letter Potter said, "The

financial constraints will make it necessary for each hospital to look for ways to maintain essential services, and respond to the needs of the community without additional cost."

Potter pointed out that the Board had an important role and responsibility in the health program. He asked for the co-

operation and assistance of the Board, "because while we want to provide for quality care, the realities dictate that we must do so within the limits of the finances available."

Potter's warning was quietly accepted by the Board members. Chairman VanSickle said it was, "a shadow of things to come."

### MILTON OPTICAL

DISPENSING OPTICIANS

Oculists' Prescriptions promptly & accurately filled

**HOURS**  
Tuesday & Wednesday 9:30 to 5:30  
Thursday 1:00 to 8:00  
Friday 1:00 to 5:30

69 Main St. Milton 878-4961

Ron Harris has the time to spare to do the Job with 'lovin' care'  
Vote "Harris" 'yea' Election Day And put him in the Mayor's chair.

### TOWN OF BURLINGTON MUNICIPAL ELECTIONS

#### Advance Poll

One polling station will be opened in each ward on Monday, November 27th and Saturday December 2nd, 1972. Polls open 11:00 a.m. until 8:00 p.m.

Ward 3. Location—Fairview Public School, 2596 Britannia Road.

#### Voting Day

Monday, December 4th is polling day—polls will be open from 11:00 a.m. until 8:00 p.m.

#### Notification of Voters

Cards will be sent by mail to all the electors shown on the voters list. This card will indicate where the electors can vote at the advance poll or on December 4th.

The Electors will be voting for candidates for the following offices:

Reeve—elected at large  
Councillor—one to be elected in each of Wards 1, 2, 3, 5, 6, 7, 8, and 9.

Public Utilities Commission—four to be elected at large.  
Halton County Board of Education

—one to be elected in each of six areas as Public School representatives (trustees) as follows:

Area 1 (Ward 1) - Area 2 (Ward 2)  
Area 4 (Ward 4) - Area 5 (Ward 5)  
Area 7 (Wards 7 & 9) - Area 8 (Ward 8)

—one to be elected at large as Separate School representative (trustee).

#### Names not on polling list

Any person who was qualified to have his name entered on the polling list during the period of enumeration—September 5th to October 10th and finds that his name is not entered thereon or who has not filed the necessary forms to have his name entered during the period for corrections to such list (ending November 8), can attend at my office to secure a certificate which will allow his name to be entered at the polling station. In addition to this, qualified electors may be entitled to have their name added to the list at the polling station on polling day.

Qualified Elector means: a person who during the period of September 5th to October 10th was over the age of eighteen, a Canadian citizen or other British subject, a resident of Burlington or a non-resident owner or tenant or a spouse thereof.

#### Proxy Voting

Forms are available at my office for the appointment of a voting proxy. A certificate to vote by proxy must be certified by myself or the Deputy Clerk. This can only be done between November 14th and 5 o'clock on the afternoon of Tuesday, November 28th.

William K. Sims, Town Clerk  
426 Brant Street, Burlington.

### Staff changes

Halton County Board of Education Thursday accepted resignations from teachers Mrs. Gail Currie of Speyside, Mrs. Judy Hilson of Brookville, Mrs. Jo-Anne Hansen of J.M. Denyes

and Miss Lois Cook of Martin St. Schools, effective by the end of the year.

Miss Linda McHutchion was appointed to Brookville Public School.

**A.T. MOORE**  
INSURANCE  
CAMPBELLVILLE  
854-2271

**THE HOME HAND! MAN'S PERFECT ADDITION:**

**WORK BENCH \$29.95**

MILTON **DOMINION HARDWARE**

227 Main St. Milton 878-2353

**We're available**

Yes, your Champion is available on Wednesday at the following newsdealers:

**HALTONVILLE**  
Jennings General Store  
**BROOKVILLE**  
McLeod's Store

**ACTON**  
Acton Smoke Shop  
Adams Bus Depot  
Royal Milk Store

**GEORGETOWN**  
Stevens Store  
Fendley's Store  
Joe's Tuck Shop  
Delrex Smoke Shop

**SPEYSIDE**  
Speyside General Store

**HORNBY**  
Hornby General Store  
Country Fare

**DRUMQUIN**  
Drumquin Store

**OMAGH**  
Omagh General Store

**PALERMO**  
Palermo General Store

**NELSON**  
Colling's Service Station  
Mount Nemo Variety

**LOWVILLE**  
Lowville Variety  
Robertson & Coulson's

**KILBRIDE**  
Coote's General Store

**CAMPBELLVILLE**  
Mohawk Inn  
Early's Garage  
Curt's Corner

**MILTON HEIGHTS**  
Fittler Variety  
Parkside General Store

**In and Around MILTON**

Chalet Restaurant,  
Dew-Drop-In,  
Hood's Restaurant,  
Hood's Drive-In,  
Bonin's Esso,  
Alfonso's Fruit Market,  
West End Meats,  
Milton Variety,  
Joe's General Store,  
Harris Stationery,  
Jim's Billiards,  
The Champion,  
Elsley's Pharmacy,  
Ledwith's Super Save,  
Milton Delicatessen,  
Milton Drug Mart,  
Plaza Smoke Shop,  
Caravan Restaurant,  
Mac's Milk,  
Mountview Restaurant,  
Milton District Hospital,  
10-25 Service Station.

**VOTE "BEST" FOR MAYOR**

(SEE PAGE B12)




## Take things easy in your kitchen

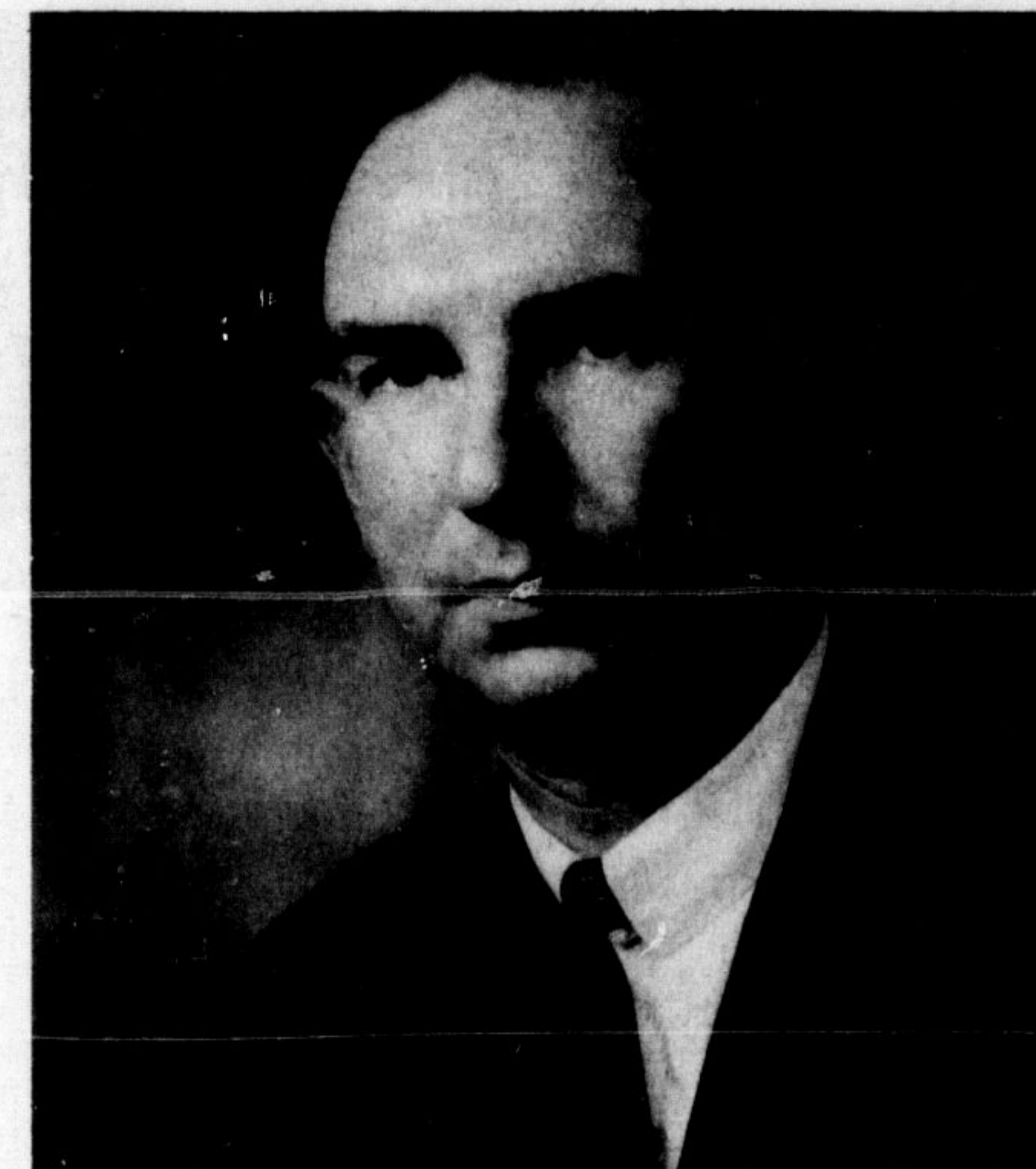
New wiring will bring new convenience to your kitchen. You can add an electric dishwasher, have electric outlets where you need them, plan your lighting to cut out shadows and glare. Then when your kitchen's up-to-date, see what electricity can do for the rest of the house. Add appliances. Improve your lighting. Even change to the living warmth of electric heating.

Talk to a qualified electrical contractor about rewiring in your home, or ask your Hydro.

The Hydro Finance Plan will help you get started right away.

your hydro 

**milton hydro**



Vote to Re-elect **CHARLES THOMSON** for **MILTON HYDRO COMMISSION**

Catch every pass at the **GREY CUP** in brilliant Zenith colour 4 WAYS SUPERIOR

- Richer Colours
- Superior Brilliance
- Greater Contrast
- Sharper Detail

**17" Portable**

**NEW 1973**

**ZENITH SUPER CHROMACOLOR**

**THE EXETER**  
Deluxe diagonal Super Chromacolor portable featuring elegantly styled grained American Walnut color cabinet. Zenith High-Performance Chassis. Super Video Range Tuner. Automatic Fine-Tuning Control. VHF/UHF Spoilite Dials. Top Carry Handle. VHF Dipole Antenna. UHF Loop Antenna.

**\$16<sup>60</sup> per month Bank financing Full Price \$469<sup>95</sup>**

**THE NEW STANDARD OF EXCELLENCE IN COLOR TV**

**RICHARDSONS T.V. 201 Main St. MILTON**