

Thumbnail sketches

Three seek hydro seats

Three men are seeking the two seats on Milton Hydro Commission in Milton's Dec. 4 election. They are incumbent commissioners William Rowney and Charles Thompson, and former councillor Austan "Oz" Ledwith the challenger.

Dundas before moving to Milton in 1952 to Manage Ledwith's store on Main St. at James St. He was the vice president of Ledwith's Food Markets Ltd.

commissioner and about 10 of those as chairman. Mr. Rowney has been active in minor hockey both as a Tri-County past president, former president of Milton Minor Hockey Association and an OMHA District Convener.

AUSTAN LEDWITH
Prior to joining the Department of Social and Family Service with Halton County in 1970 Mr. Ledwith operated a grocery business on Main St. for 17 years.

He and his wife live at 321 Mary St. Milton. Mr. Ledwith was first elected to town council in 1953 as councillor. For the next two years he served as deputy reeve and was elected for two terms (four years) as reeve. He lost a mayoralty race to Brian Best in 1969.

CHARLES THOMPSON
With five years experience on the Milton Hydro Commission, Charles Thompson is seeking another term. Mr. Thompson is a sales representative for Domtar. He is chairman of the Fifth Milton Scouts Group Committee. He too served on the hydro committee to study the effect of regional government on hydro. Mr. Thompson has spent most of his life in Milton and attended high school here.

Hydro, recreation roads hot topics

The route of Ontario Hydro's Nanticoke to Pickering power line, the need for increased recreation facilities and the condition of township roads were some of the issues discussed between Nassagaweya residents and council candidates at Friday's meet-the-candidate night.

remarked that if he had been a member of council when the power lines issue was debated, he would not have discussed the matter.

Monday bus plebiscite . . .

(Continued from Page One)

A member of the Coalition of Concerned Citizens, Charles Barnes queried Deputy Reeve Don McMillan over the power line issue. "When council was discussing the power line there was no mention the land would take one per cent of the total land value," he said.

One member of the audience, Jim Jennings of R.R. 3 Campbellville, told the candidates he was too young to vote but wanted to know where the candidates stood on the question of increased recreation facilities.

concluded. "I don't see anyway we can continue to operate without a subsidy. We operated since February at a loss, just to prove the need," Lewis noted.

First route
McMillan said the first route—a diagonal route proposed by Ontario Hydro was probably the best. A second route following lots and concessions had been drawn up by a previous council and planning board. During a council debate on the lines last year the deputy reeve opted for the first route as the least harmful.

Get off fanny
While council member Jim Watson, who is trying for the deputy reeve's spot indicated a desire to expand facilities, council candidate John Henry indignantly retorted that it was "time for young people to get off their fanny and do something for themselves."

Won't take cab
Mr. and Mrs. Lewis both point out a number of individuals who have come to depend on the bus service and are concerned about the possible discontinuation of it.

"If we can shift the line to another area, all well and good. But you must realize it will affect another municipality. I think you're all aware of my stand," McMillan reiterated.

The condition of roads was also talked about during the meeting. While some members voiced complaints, many praised the township's road improvement program.

Home Hardware opens

Milton's newest hardware outlet. Home Hardware Stores Ltd. at Milton Plaza, is holding a pre-Christmas opening this weekend. Dealer-owner Larry Schuyler announced free coffee would be served to visitors all day Thursday, Friday and Saturday.

Won't discuss
"I'm glad you brought the matter up," Powadiuk noted. He

"I travel" all over the province and the roads here are equal to any in Ontario," pointed out Allan Parsons, a resident of the Fourth Line.

Mr. Schuyler recently purchased the local Home Hardware outlet from T. R. "Bob" McKim, who had been operating the business in a downtown location for the past 26 years. When Mr. Schuyler purchased the business, most of the stock went with it and he has since added other lines to make the new plaza store a more complete hardware outlet. In the spring the store plans to add a wide selection of sporting goods, Mr. Schuyler said.

54 candidates seek Oakville seats

There are exactly twice as many candidates as open offices in Oakville's Dec. 4 municipal election - 54 are seeking the 27 seats on Oakville Council, Halton Board of Education, Halton Separate School Board, and Oakville PUC.

councillor Bill Cudmore in a seven-man race. Ward Three: Peter Watters, an incumbent, is in the race with former councillor William Reaume and Adeline Ward, Arch Donaghey, John Somerville and Jim Muir. Muir is the man who opposed Terry O'Connor for the PC federal nomination.

PUBLIC UTILITIES COMMISSION (Four to be elected, at large):

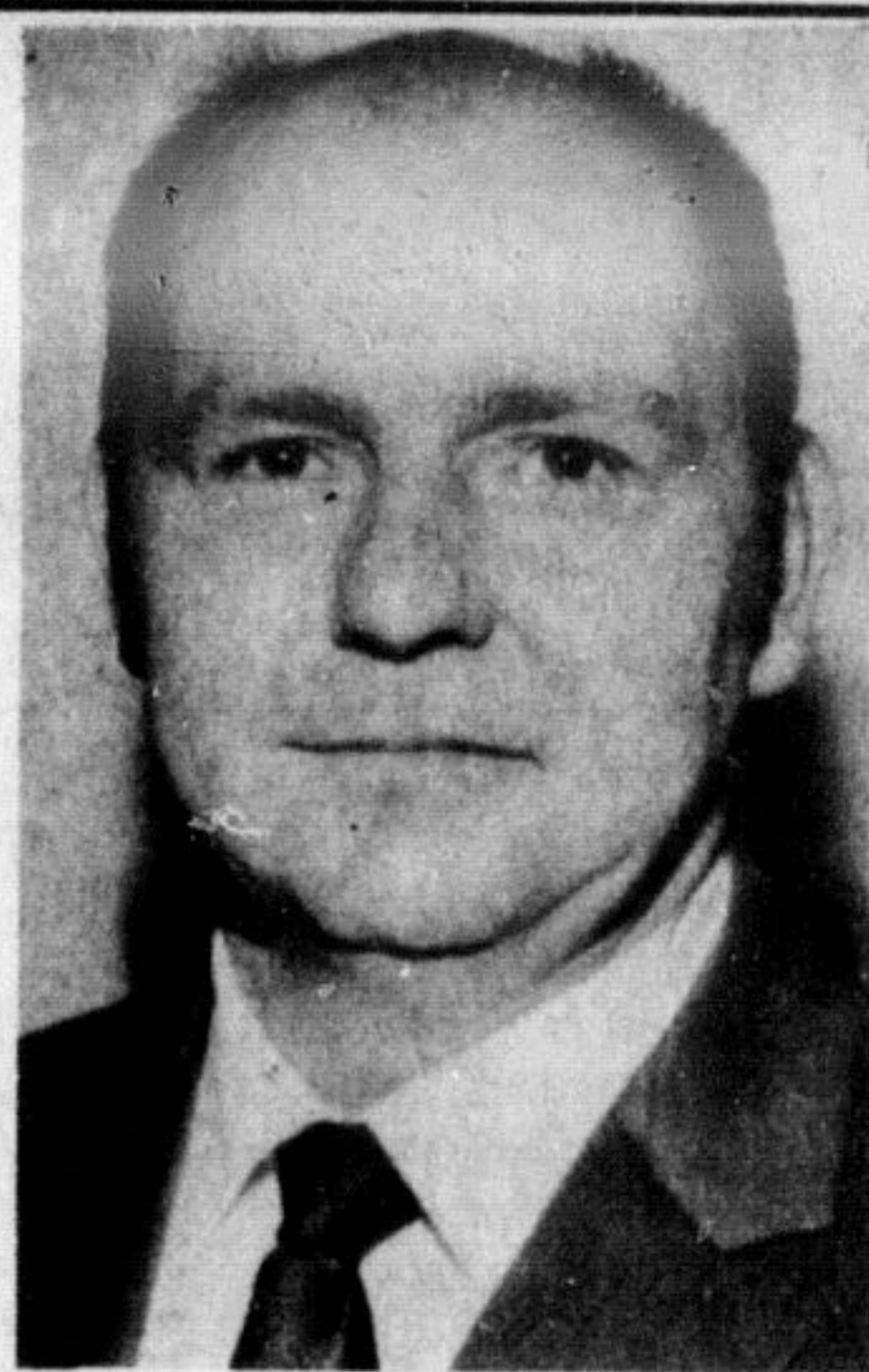
by John Hueton, John C. Rankin and Colin Bell. **SEPARATE SCHOOL BOARD** (All acclaimed): Ward One, Anton Kurz; Ward Two, R.L. Diemert and Leno Braida; Ward

Three, Joan Leslie; Ward Four, William Francis. **BOARD OF EDUCATION** (One to be elected by Separate School supporters): Len Auger and Ken Walsh are contestants.

Here's a recap of who's who in the Oakville electoral race: **MAYOR:** Incumbent MacLean Anderson is retiring so present deputy reeve Harry Barrett, present councillor Michael Boyle and newcomer Carol Montour are in a three-way race for the top seat.

Ward Four: Former councillors Laurie Mannell and Ryland New joined in a nine-way race for the two seats, along with incumbent A.W. Mason, Elizabeth Milchem, Al Ruelens, Dion Sceats, Cameron Hillmer, Dagmar Nikolich and Michael Mutzak.

VOTE RUSSELL MILLER FOR REEVE OF ESQUESING TOWNSHIP



—9 Years Municipal Experience —A vote for Russell Miller is a vote for dependable representation and a keen sense of responsibility to the electorate.

FOR TRANSPORTATION Phone 877-6619 or 877-3674

REEVE: Incumbent Al Masson is being challenged by councillor Gordon Brown.

Ward One: Incumbents Len Crosier and Doug Palmer are challenged by Jim Clelland and Jim Price.

FOR TRANSPORTATION Phone 877-6619 or 877-3674

DEPUTY REEVE: Councillor Paddy Hughes and Terry Mannell are vying for the seat Barrett left vacant.

Ward Two: Incumbents Irene Goobie and Richard Goodin are challenged by Guy Sutherland.



For Progressive Planning More Informed Community Finalization of Plans **VOTE TO ELECT MALCOLM H. FREEMAN** Councillor Esquesing Township

COUNCILLORS: (Two to be elected in each ward)

Ward Three: Incumbents Irene Goobie and Richard Goodin are challenged by Guy Sutherland.

ON MONDAY, DEC. 4 VOTE JOHN F. McILLWRAITH JR. X FOR COUNCILLOR — TOWN OF MILTON

Ward One: Donald F. Gordon and Richard B. Day won Oakville Council's only acclamations.

Ward Two: Incumbent Robert Hooper is joined by John Wiskin, G.E. Donnelly, Buzz Hayden, Bob Massey, Gord Reade and former

Mr. Schuyler has also taken 10 and 20-week courses in business administration at Sheridan College and this spring will receive his Business Administration certificate from Sheridan.

Working with him are two former employees of McKim Home Hardware, Thelma Bousfield and Gordon McIntosh. Part time helpers are Don Cosulich, Shawn Goulding and Steve Brownridge.

The bus service is being used more each month, according to Lewis. The daily load averaged 30 or 40 during September and increased considerably in November. As the cold weather sets in the Lewis' predict an even greater demand for the service.

There are over 1,300 Home Hardware stores coast to coast. Each store is owned by the local dealer.

If the subsidy goes through the route would be increased to take in the new subdivisions and eventually the extreme south end of town once Parkway Dr. is completed. The bus would stop at Milton District Hospital every hour and the five and 10-minute stops at the Post Office would be eliminated. Maps showing the route and schedules would be printed and distributed if the service continues.

A simple majority is needed to have the subsidy defeated or approved. There are 2,450 voters eligible.

Will the REAL Reeve please stand up



Because now more than ever before, we need a Reeve who will stand up for Milton. We need a Reeve who has the knowledge, experience and fortitude to steer us safely through regional government.

I have never been afraid to speak out on your behalf whether it be to protect what remains of our natural beauty and assets or to try to provide services without crippling people like you and me— who must pay the shot.

Milton is expanding rapidly but unless we guide development with a strong hand and voice we can easily become a concrete cavern.

I am all for progress when it benefits all of you. But I will not allow Milton to become a developer's playground.

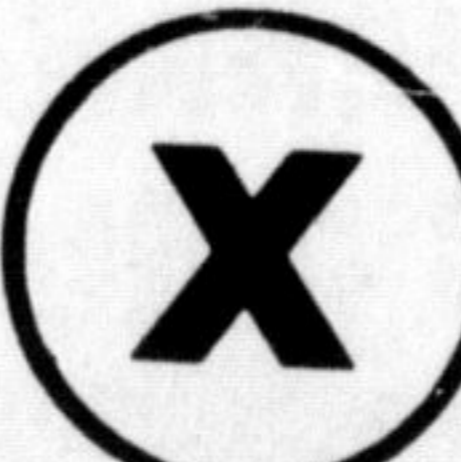
A Reeve must stand up for what you believe and not be swayed by any particular interest group. A real Reeve will ask your advice and opinion in formulating policy and present the issues to you clearly. He will not surprise you by announcements, after the fact. Surprises are for Birthday parties.

If you elect me Reeve I will devote my time, day or night to be your voice at the municipal and county level. I will work to update our recreational facilities for our youth and senior citizens.

I hope we can count on each other. Give me your vote on December 4th and I promise— I will stand up for you.

Sincerely, Colin Smillie.

VOTE SMILLIE FOR REEVE Dec. 4 Town of Milton



3 HOURS ONLY

SAVE \$100 OR MORE

6 p.m. to 9 p.m. Thursday Nov. 30th

2 PIECE CHESTERFIELD SUITES

ONE ONLY
No. 820
Hampton Fern Fabric
Contemporary Style
Reg. 399⁹⁵
299⁹⁵

ONE ONLY
No. 8520
Irwin Rust Fabric
Colonial
Reg. 429⁹⁵
NOW 329⁹⁵

3 HOURS ONLY

ONE ONLY
Slightly soiled
Mary Beige Fabric
Contemporary Style
Reg. 499⁹⁵
NOW 299⁹⁵

DONT DELAY

ONE ONLY
No. 841
Oxford Cognac
Fabric
Reg. 499⁹⁵
NOW 399⁹⁵

RICHARDSON'S FURNITURE
201 Main St. MILTON
878-6949

ONE ONLY
No. 7272
Major Brown
Fabric
Modern Style
Reg. 449⁹⁵
NOW 349⁹⁵