

# Champion Sports Page

## Flyer fumble Friday top Mohawks Sunday

An early 4-1 lead fizzled Friday night on Milton Continental Flyers and it was all the Flyers could do to stop from being run out of Oakville Arena by the time the final buzzer blew. Flyers dropped the contest 10-5 but stormed back Sunday night on home ice and held the first place Burlington Mohawks to one goal and defeated them 3-1.

Friday's game was marred by penalties with 103 minutes being levied before the game was over. Milton served 58 minutes while the Blades served 45. Before the game was over Greg Walmsley, Bill Presniak and coach Bert Brown had all been ejected from the game.

Walmsley got the gate during the second period when he was assessed an elbowing penalty and a major misconduct followed. Presniak got into trouble in the third period when he and Don Milford engaged in a scuffle.

### Hockey trip

## Hockey, hospitality mix well at Millis

Gus Mowbray, President of Milton Minor Hockey and Joe Wilson, organizer of the trip led four teams from Milton to Millis, Mass. for an exhibition series and official opening of the new Millis Community Arena recently.

The invitation was twofold, as a reciprocation for the Millis visit to Milton last hockey season and the official opening of their new arena.

Teams that journeyed south of the border were the Major Midgets, Minor Bantams, Minor PeeWees and Minor Novice.

The best quotation made during the weekend was by president Gus Mowbray who said "we are representatives of another community in another country so therefore, how we play the game comes first so that we may return home proud of being true sportsmen. That is more important than winning".

### Good will

This was done during every game from the Midget game on Friday evening, Nov. 17 when local boys won by an 11-6 score to Saturday when the remaining three games were played by Milton Bantams with an 8-2 victory. PeeWees were at the big end of a 15-4 win and the anchor gang, the Novices kept the winning streak alive with a big 6-1 victory.

Upon completion of each game all the Millis boys and Milton boys exchanged crests of their respective leagues.

The "GO MILTON GO" badges brought down by Milton went over big as there was not one to be seen coming back north of the border.

Two buses were chartered for 60 hockey players plus 40 adults which consisted of coaches, managers and parents of the boys.

The buses left Milton Friday morning, Nov. 17 at 8:30 a.m. for the long trip down and arrived at the Millis Arena at 7:30 p.m. amid a fantastic welcome of Millis citizens, hockey players, civic officials, cheerleaders, bands and honor guards.

Each Milton hockey player was allocated a home with the parents of the Millis hockey players and every boy enjoyed fine hospitality. They were entertained and many given gifts and souvenirs and packed lunches for the return trip home.

The official opening commenced with the Service of Honor Guards, the presentation of the U.S. Flag and the Canadian Flag with the National Anthems.

### Large pennant

Milton officials also presented a large Milton pennant to be hung in their new arena alongside the Canadian Flag.

The adults were bedded down at the Holiday Inn Hotel in Farningham, a suburb of Boston.

Upon completion of the Midget game the adults were fed and entertained at the home of Dana Townsend which was built in 1734 and was located on the Charles River and was originally an Indian Trading Post. At that time, the Townsends had 800 acres of land which Millis Arena is now situated on.

Sightseeing and visitation with their hosts highlighted the trip for Milton boys during the time they weren't playing hockey. The

Presniak claimed Milford punched him and then he hit the Oakville player with his stick on the head. Presniak took a minor for boarding, five minutes for fighting that followed and a misconduct penalty and a suspension. Milford got five minutes for his part in the fight.

### Lead 4-1

Flyers led by Doug Anderson's three goal spurt in the first period went ahead 4-1 with Presniak's first period goal at 15:06 of the first period. Before the period ended Flyers trailed 5-4 and Blades pumped in four goals in three and a half minutes.

Blade shooters continued their prolific scoring and left Flyers behind during the second and third periods. Bob Fukomoto scored Milton's only goal of the second and third periods. Ivan Durigon, John Tonelli, George Cousens, George Mills and Craig Fleming all picked up assists.

Ray Chisholm scored four goals for Oakville while Don Milford, Bill Sherlock, Brian Bennett, Dennis Fowler, Cullen Simpson and Chris Steenhof singled.

### Mastine hot

Superb goaltending Sunday night by Terry Mastine kept Flyers in contention with the high flying Mohawks during the first and second period. Mastine came up with a least half a dozen sensational saves and held Burlington to one goal during the game.

Ken Grivel's first period goal provided the visitors with a lead until Ray Love opened the scoring for Milton at the 15:36 mark of the second period from Bob Rusk and Bob Fukomoto.

Craig Fleming drove a loose puck behind Mario MacDonald in the third period on an assist from John Arnold and Gary Hunt. Doug Anderson scored the

insurance goal and his fourth goal in two games Sunday at the 15:30 mark of the third period.

Arnold and Ivan Durigon assisted. While Flyers hustled and controlled a good share of the play during the game, Mastine was called upon to make 36 stops and it was he who stymied the Burlington shooters.

### Clean hockey

Unlike the game Friday and unlike the last time Burlington and Milton played each other, the game was without a lot of penalties. As a matter of fact only a total of eight minutes were assessed during the whole game.

While the win didn't lift Milton out of fifth spot it caused Burlington to have to share first with Streetsville.

### Blue line banter

Ray Love, a newly acquired right wing seems to be filling the bill nicely according to Flyers executives. Ray was acquired from the Dixie Junior B's and is a Georgetown boy. Flyers were slated to play in Streetsville Tuesday night and then host Brampton here Friday. Friday night is ladies' night in Milton Arena and the feminine fans will be admitted for half price. Dec. 6 the Junior executive will hold a turkey and ham roll in the Bear Rug Room at the Charles Hotel.

adult group was entertained to an evening of dancing by Millis hosts. Presentations were exchanged with Gus Mowbray making the presentation on behalf of Milton.

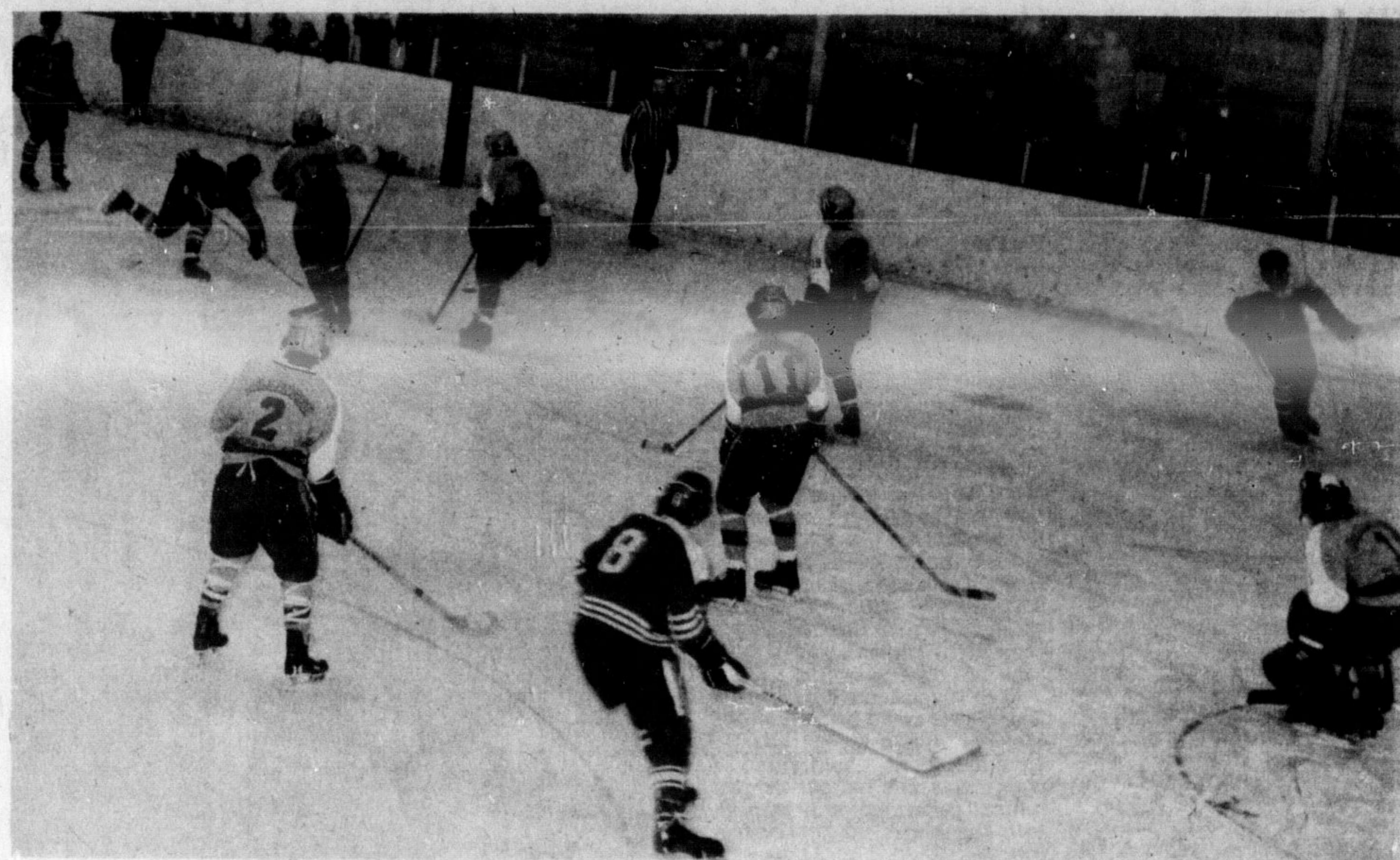


TWO BUSLOADS of players, parents and coaches travelled to Millis Mass. (near Boston) recently to partake in the official opening of the new arena there. Millis teams played here last year and invited Milton there for hockey and to assist in the official opening. The front of the Millis arena is pictured here.

## Mites bow out 1-0

The Milton Mites were edged 1-0 by Streetsville in Milton Friday night. Streetsville scored at the 10 second mark of the first period and then hung on to register their third victory of the season.

The Milton Mites outplayed their opponents but just couldn't put the puck in the net as three times they had the puck in Streetsville goal line but failed to make it count. Coach Ken Thompson was quite pleased with his lads as they skated well and Derrick Neelands played a strong game in the net.



A BURLINGTON SHOOTER winds up for a drive while his two wingers circle in the Milton zone. All five Milton defenders are shown getting ready for the shot from just inside the blue line. (Photo by B. Burt)

**Junior "B" Hockey**  
MILTON ARENA  
THURS., DEC. 1st 8:30 P.M.  
**Brampton vs. Milton LADIES' . . . . NIGHT**  
Any Lady  
Admitted at 1/2 Price

**Tired of DULL SKATES**  
Missed Edges, Slanted Blades

Try  
**Brownie's Sports**

Skates sharpened hollow ground. We also shellac toes of skates for protection against moisture.

"We do the Real Thing" While you Wait

150 Mill St. Milton 878-4602

**GREY CUP WEEK SPECIAL**

40 OUNCER of COKE with every FAMILY PAK or PARTY PAK OF FLAVOR CRISP CHICKEN

Family Pak includes 16 pieces	4.35	Party Pak includes 21 pieces	5.50
-------------------------------	------	------------------------------	------

**MURRAY HOOD DRIVE-IN**  
Locally Owned and Operated  
Base Line Road West of Highway 25

PHONE 878-6028  
And We Will Have Your Order Ready For Pick-up.

Offer Effective Nov. 29 through Dec. 3  
Open daily to 8:00 p.m. Sunday 12 noon to 7 p.m.  
Friday to 12:30 a.m. and Saturday to 11:00 p.m.



To work for people and protect your rights -- every one important

**VOTE BOB MOREAU**  
COUNCILLOR -- TOWN OF MILTON  
ON MONDAY, DEC. 4

## SKI FOR FUN

MILTON PARKS AND RECREATION DEPARTMENT ANNOUNCES **SKI LESSONS** AT GLEN EDEN

Lessons to be offered: (All Lessons one hour in length)

(a) JUNIOR LESSONS (16 yrs. of age or under) — Lessons \$17.50  
Time: — Saturday, January 6th, 1973, at 2:00 p.m.

(b) Adult lessons  
8 Lessons and 8 afternoons skiing — \$20.00 or  
8 Lessons and 8 evenings skiing — \$20.00  
TIME: — Tuesday Afternoon—1:30 Tuesday Evening—8:00 p.m.  
Wednesday Morning—10:00 a.m.  
Starts: — Tuesday, January 9th, 1973.

**PRE-REGISTRATION IS NECESSARY**  
Register at the Town Hall, Monday to Friday—10:00 a.m. to 12 Noon Only or mail Registration Form to the following address: —  
**Milton Parks and Recreation Department, P.O. Box 3, Milton, Ontario**

Enclose cheque or money order payable to Milton Recreation Committee

NAME \_\_\_\_\_ ADDRESS \_\_\_\_\_ PHONE \_\_\_\_\_

Adult Lessons \_\_\_\_\_ Day \_\_\_\_\_ Time \_\_\_\_\_ Age \_\_\_\_\_

Junior Lessons \_\_\_\_\_ Age \_\_\_\_\_ FEE ENCLOSED \_\_\_\_\_

**DEADLINE FOR REGISTRATIONS—FRIDAY, DECEMBER 29TH, 1972.**  
For further information contact R. Small—878-4151.

**OPEN HOUSE SALE!**  
Nov. 30th  
Dec. 1st Dec. 2nd

**SKI-DOO**  
the machine that changed winter... has changed

**MILTON MARINE & SPORTS, YOUR RECREATION CENTRE**  
(Working is our hobby Recreation our business)  
25 COMMERCIAL ST. MILTON 878-6521

**T'NT 1973. Ride the Silver Bullet.**

**Free** BALLOONS FOR THE KIDS  
KEY CHAINS  
BOOK COVERS

**10% off** (3 Days Only)

**UP to 50% OFF** on ALL Sports Equipment, Tennis, Cycling, Etc.

Come in and see the complete line of 1973 Ski-Doos, and equipment at our newly expanded show room.

at **25 COMMERCIAL ST. MILTON 878-6521**

**TRADE IN YOUR WALRUS**

**JOHN RUSSELL**