

—It rained again on Saturday, and that was the fifth rainy Saturday in a row. —Christmas catalogues are out, and there are just 33 more shopping days before Christmas.

BILL'S AUTO BODY

269 MAIN STREET, MILTON
878-2721 • 878-3251

Complete Collision, Body Repairs & Refinishing.
Also Custom Appliance Refinishing.

Do It Yourself!

Come In!
and
Choose Early...

From our
Large Christmas
Display

Bring in your
own novelty
or dish...



I will arrange them
or tell you
how!



- Weddings
- Arrangements
- Potted Plants
- Cut Flowers

MILTON Greenhouses
Barry Burne Proprietor
Conveniently located in
downtown Milton
164 Main St.

878-9501

VOTE

YES

DEC. 4

Milton

Bus Subsidy

J. R. Currie O.D.

OPTOMETRIST

BURLINGTON
MALL

Telephone 632-7788

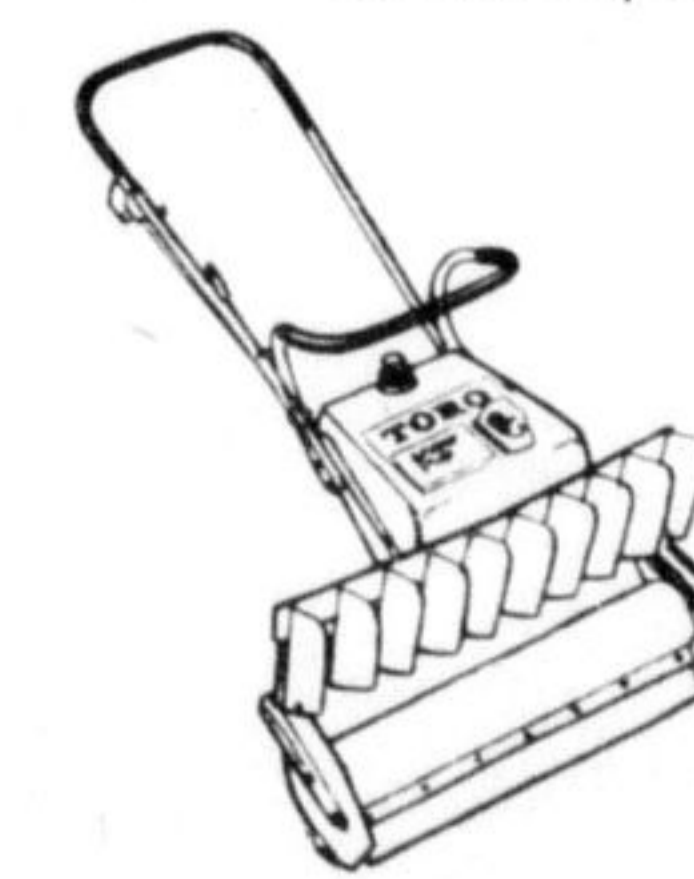
SUPER SNOW HOUND GETS THE DRIFT



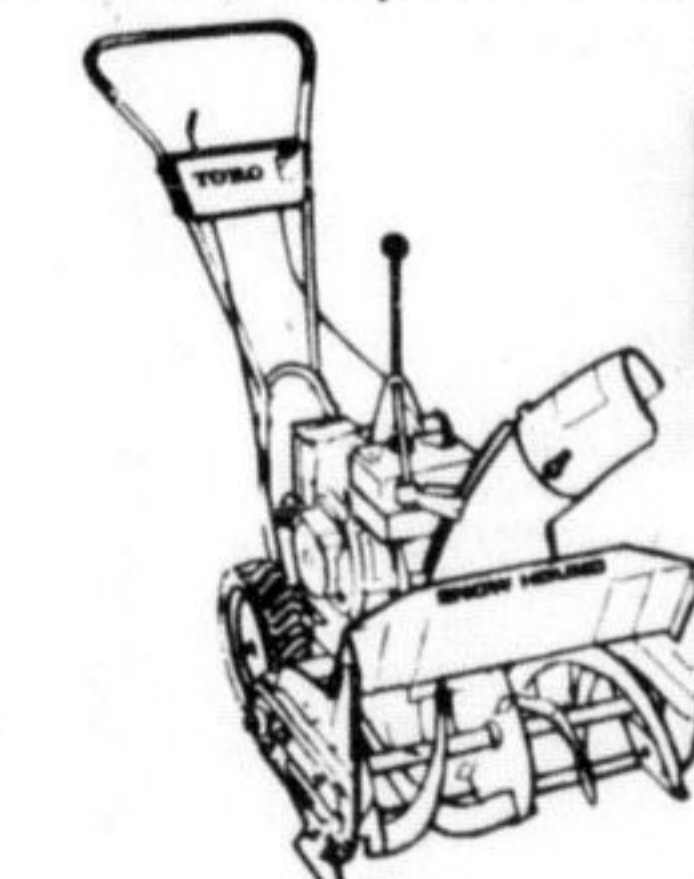
And you get a snow job.
Up to 32 inches wide each
time.
Down to the bare pavement the
very first time.

A special drum auger handles the
wettest snow like the lightest feather. And a 1500 cubic-inch impeller throws
more snow with no clogging. Toro's new two-stage snowthrower does it all.
Faster. Easier. Better. So why break your back this winter on a job that's fit only
for a dog?

Call on Super Snow Hound. At your Toro dealer.



Snow Pup. Two models, 14" and
21" widths. Light enough for a
woman. Strong Polyester/
Fiberglass paddles sweep clean.
Snowthrowing directional control.
Ideal for steps, porches,
sidewalks. Cleans a 50-foot
driveway with little effort.



Snow Hound. Self-propelled.
Plows a 20" swath. 270-degree
chute directional control.
Center metering disc reduces
front throw. Simple, up-front
control panel for easy operation.
3 1/2 hp engine designed for fast
starts in any temperature.



Super Snow Hound. Self-
propelled. Exclusive pivoting
scraper blade eliminates
bumping and snagging. Separate
wheel chutes for power turning
and effortless handling. Adjustable
chute. 5 hp and 7 hp, both with a
26" swath. 8 hp with a 32" swath.

BOYNE GARAGE
& MOWER SERVICE

Highway 25 & Britannia Rd.
878-3912



THE POND FROM ON HIGH... Construction of the 11-storey Noble Towers apartment building on Millside Dr. near Martin St. was too good an opportunity for photographer Jim Jennings to pass up. He climbed to the roof one day recently to get a bird's eye view of



central part of Milton and on this page are some of his photos from that lofty perch, as future tenants will see it. Above, the mill pond glistens in the afternoon sun.

Country Kitchen Restaurant stays open 24 hours a day

Milton's first 24-hours-a-day restaurant opened its doors to the public last week.

Country Kitchen Restaurant at Fifth Wheel Stop, located in the former Johnson Trucking property on Highway 25 at Milton's northern entrance, hosted a small pre-opening party Monday evening with about 75 councillors, suppliers, contractors local businessmen and friends on hand for wine and cheese and a buffet dinner. At 6 a.m. Wednesday, Country Kitchen opened its doors—"and threw away the key" laughs Jim Powers, the manager.

The restaurant will remain open 24 hours a day, all year round, with the exception of Christmas Day when it might be closed, Powers said.

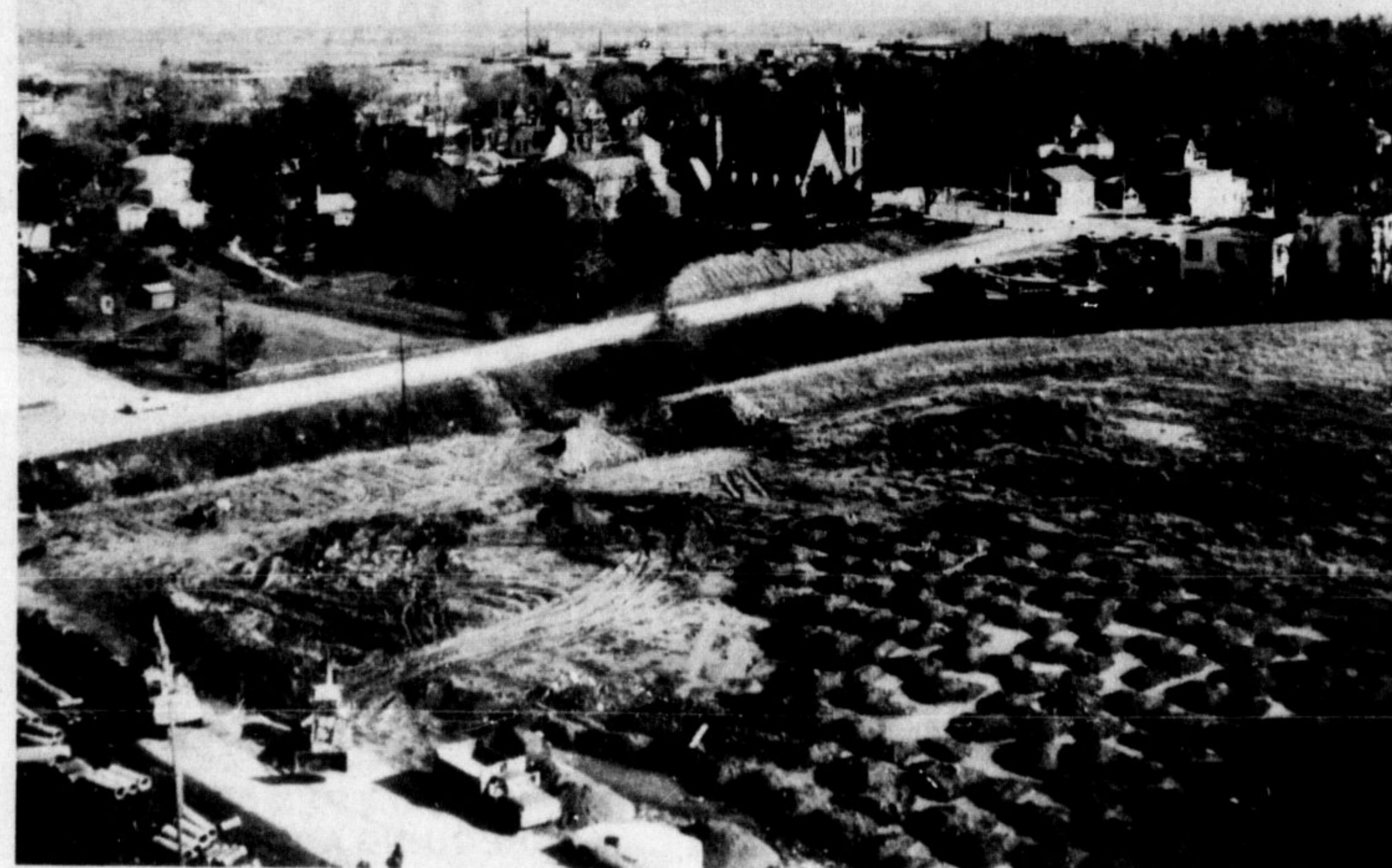
Complete centre

Fifth Wheel Stop is designed to be a complete service centre for trucks and cars. Gas and diesel pumps were opened several months ago to serve trucks travelling Highway 401 and the local public, and the opening of the restaurant completes phase two of the overall operation. Eventually truckers' roomettes will be made available for the travelling public, complete with shower facilities, TV room and

lounge, phones and a message centre. Truck servicing facilities, a weigh scale, tire service and a welding and radiator shop are also being planned.

The 117-seat restaurant features a complete menu which is available 24 hours a day—for example is always being served, not just during certain hours. Manager Powers stressed that any item on the menu is available at any time, including the daily special dinners. Genuinely friendly service and the "bottomless" cup of coffee are featured.

Most of the staff was recruited locally. Business has been better than expected, company officials



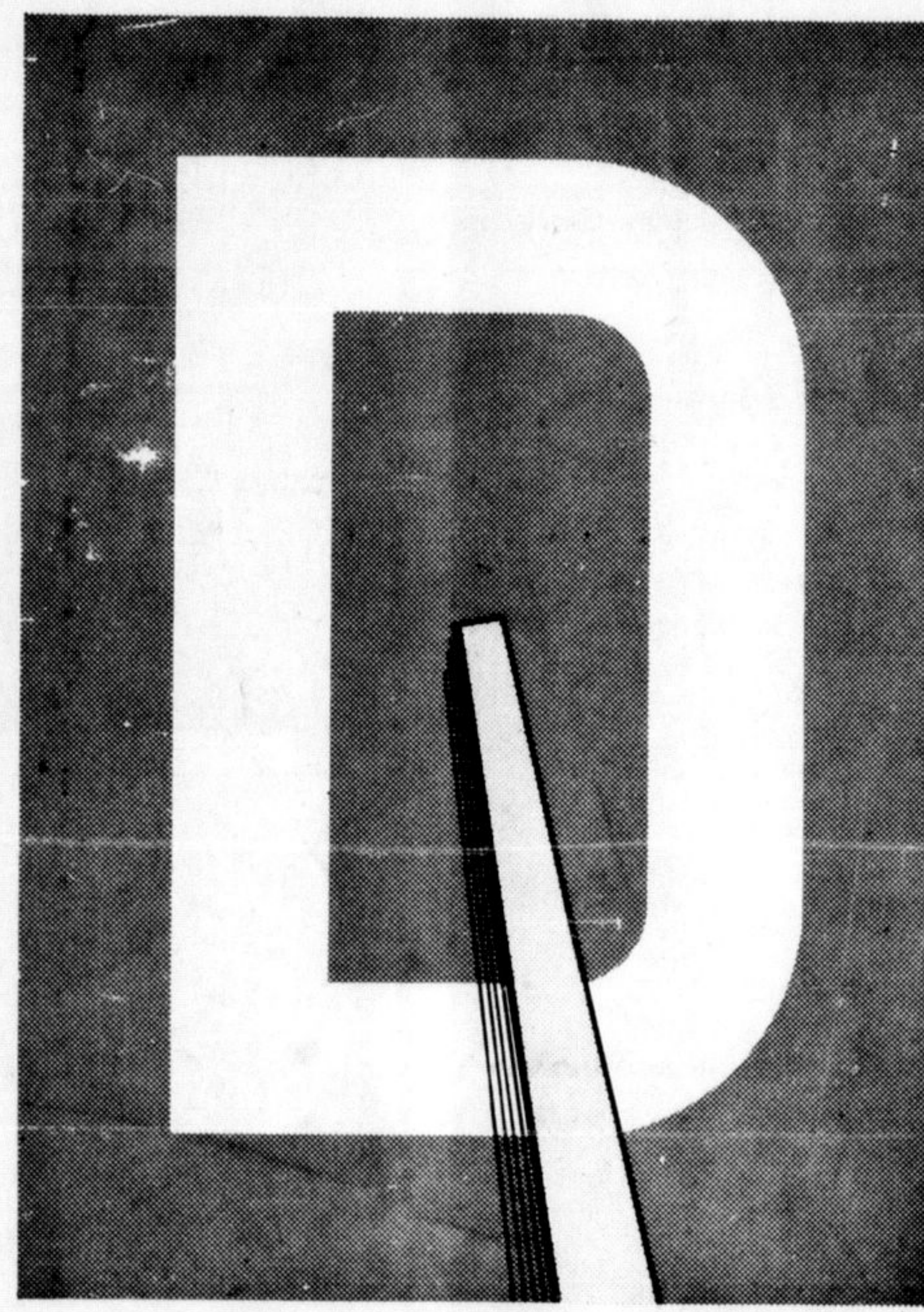
MOUNDS OF EARTH in the foreground are piles of fill for the property known as "Martin's Flats," site of more future apartment buildings. In the background you can pick out Grace Anglican Church and the taller buildings at Halton Manor and Ontario School for the Deaf.



DOWNTOWN MILTON is partly hidden by the buildings of Robin Hood Multifoods (left foreground) in this view from the roof of Noble Towers on Millside Dr. Off to the right is Main St. and Knox Presbyterian Church.



HOLY ROSARY CHURCH, the church hall, convent and school are seen here atop the buildings of Noble Towers building, under construction on Millside Dr. In the foreground is the underground parking lot for apartment dweller's cars; at left the Martin St. School; in the background, North American Rockwell plant.



D is for Drive.

And D is for Datsun 1600 automatic — the smoothest 3-speed automatic you can drive, wrapped up in the most efficient, economical car you can buy. No decrease in power. Test drive it today.



DATSUN 1600 AUTOMATIC

It's all you really need

the more-for-your-money car



NORTHEND BP

235 Steeles Ave., Milton

878-2471

DOLLOCK AND CAMPBELL
Manufacturers of
Grade Memorials
Funeral Engraving
100
St. North

ancement, we
date all our

30, 1972
NOW
LASTS

ck-up. Precision
ar complete auto

UP

fan belts,
and sparks,
rburetor.
st engine for

UP
AL
6
S

MILTON, ONT.