

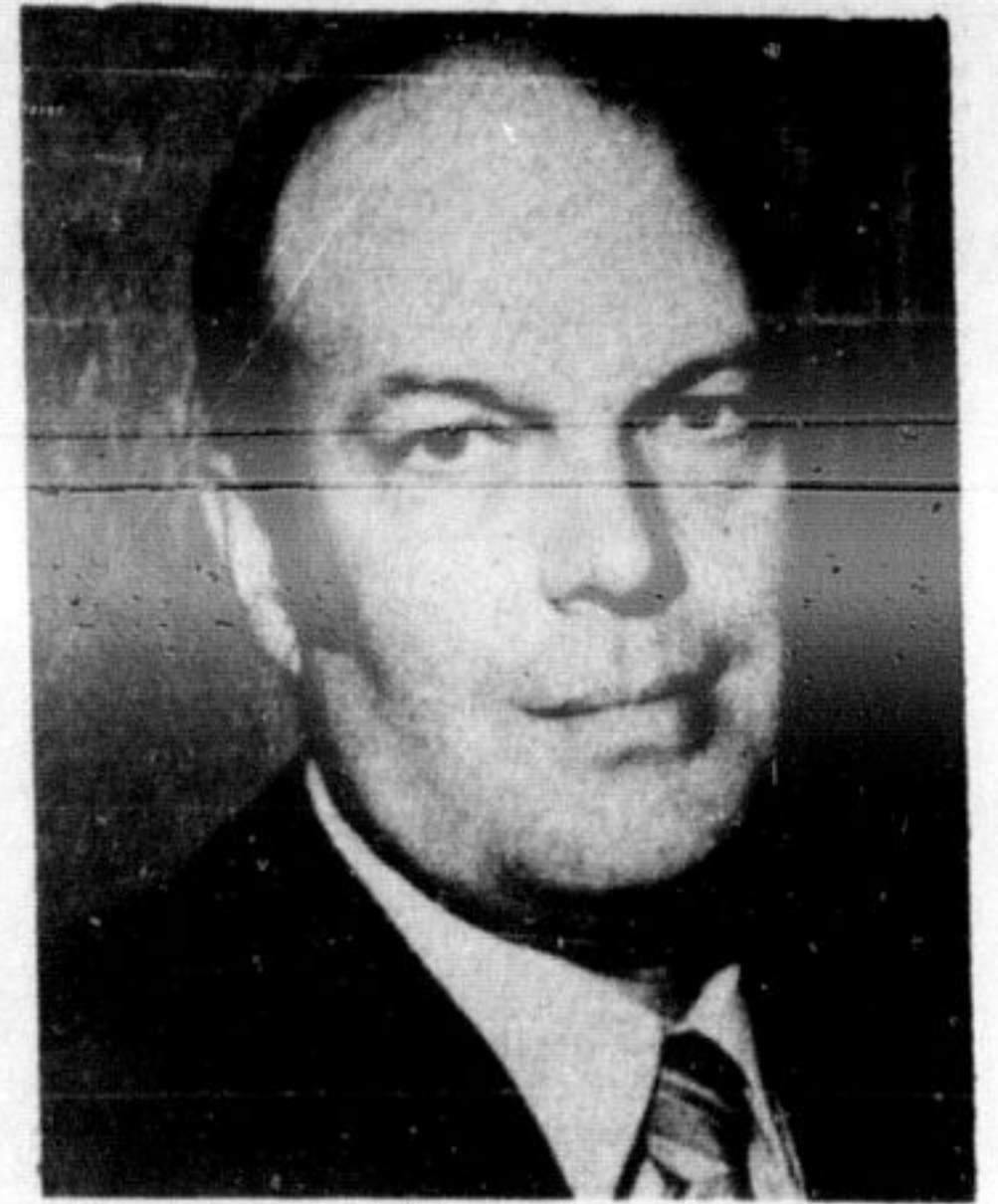


FALL FAIR TIME IS HERE AGAIN and that means many local women will be preparing their exhibits and displays for the annual Milton Fair this weekend. Mrs. Ross Lawrence of First Line south of Milton was one of the major winners in the fair's baking classes last year and she demonstrates the materials needed for baking a loaf of raisin bread in her kitchen. (Photo by R. Downs)

Tom Foster enters race for N. Burlington seat

Tom Foster, a 41-year-old North Burlington farmer became the third candidate seeking election in Ward Three when he threw his hat in the ring this week. Tom Patience, a high school teacher and incumbent councillor Mrs. Ella Foote are also contesting the seat. Foster has been active with the Federation of Agriculture, Soil and Crop association and is currently president of the Halton and Peel Hog Producer's Association.

Land use Foster sees land use and the retention of rural life in the ward, as a challenge of the future. He said he feels landowners should be compensated if land is to be zoned as restricted zones. If farmers aren't compensated the rural area will disappear and more development will take place, he felt. He operates 200 acres on Blind Line near Lowville and owns 100 of the 200 acres he farms. Tom lives with his wife Carole and children Kathy, Bob and Elizabeth.



TOM FOSTER

Make money on Glen Eden area

The Halton Region Conservation Authority made money on its skiing operations at the Glen Eden Ski Area last winter, Authority executive members learned recently.

Secretary-treasurer of the Authority, Max Hatherly reported a surplus of \$3,692. The authority was also able to make an \$18,500 payment on \$92,000 bank loan taken out last year for improvements at the ski area. Chairman of the Authority, Barry Humphreys said the report was "gratifying" because the winter season had been bad weather-wise. Some of the improvements underway for next season include

the installation of a small T-bar, a building for the ski patrol and lighting and snow-making equipment. The improvements will cost \$28,000; to be financed from current funds.

For Quality and Friendly Service

Karen's FLOWER SHOP

For the best in

- Wedding Designs —Anniversaries
- Hospital Arrangements
- Funeral Tributes

MILTON PLAZA 878-2881



A HAPPY NIGHT was served up by Wimpey Homes for neighbors in the Dorset Park subdivision just off Ontario St. when a dance was held in the Legion Hall Saturday. During the dance Hans Winther representing the Wimpey firm greeted Paul and Pat Lonergan who were the newest couple to purchase a Wimpey home. Their purchase was on Tuesday and they'll move to Milton's Lorne Scots Drive from Brampton, with their two sons Michael and Mark. —Photo by J. Dills

Election expenses

Come clean, NDP candidate asks

Not only does Halton NDP candidate Carolyn Holstein agree with Conservative candidate Terry O'Connor and his plan to free the countryside from election signs, she has also proposed another clean-up.

In a letter to O'Connor and Rud Whiting, Liberal member, she asks that the three "come clean" and reveal their sources for campaign funds. Mrs. Holstein was writing in reply to a letter from O'Connor urging restriction on signs. With regard to the signs, Mrs. Holstein suggested her party has complied with the restrictions suggested by O'Connor for some time now.

Don't know?

Mrs. Holstein suggests the old parties like to pretend they don't know where their funds come from. She notes however that Prime Minister Trudeau recently attended a fund-raising dinner with representatives from IBM, Falconbridge Nickel Mines and Union Carbide, all of which receive government grants in excess of \$1,000,000.

"Everyone admits that the present system of financing election campaigns is rotten to the core. The anti-democratic aspects of it have bred cynicism and rebellion, especially among young people.

"You, Terry, wanted our

riding, Halton, to "stay clean" and not put signs on public property. I now ask that you, Rud and I "come clean" and state publicly, in an itemized account, the names of individuals and the names of organizations who have made contributions to our respective campaigns. Surely a refusal to do so is a statement of hidden guilt.

"I anticipate an eager acceptance of this proposal from both you and Mr. Whiting," she said.

Lewis may start school bus route

A bus service for Martin St. School and Milton District High School could be inaugurated in October, say David and Irene Lewis of Heslop Rd. who operate Milton's only bus line.

Because some residents in the two school areas had indicated a desire for a bus line, the Lewises decided to gauge public interest in such a route by advertising in this newspaper. About 20 replied and said they would use such a bus service.

"We didn't receive as many replies as we thought we might. But with more and more people moving into Dorset Park, we feel there's a chance we could set up a bus service for the school area," says Mrs. Lewis.

There are several factors to consider, she suggested. "We would have to decide the type and size of bus used, the number of students who would take it and the best time—high school students can enter their building by 7.30 a.m., while Martin St. School pupils have to wait until 8.45, I think."

The Lewises would only be able to operate the bus line in the morning. "A morning bus service would protect students from the rain. They wouldn't have to sit in wet clothes all day," she says.

More groundwork and preparation will be needed before the Lewises decide whether or not to implement the bus service. She says the bus line could be a reality if enough people show an interest.

"It's not just a case of advertising in the newspaper, but of handing out flyers and talking to people," she claims.

Seek OMB approval

An Ontario Municipal Board hearing to hear the application of Springbank Sand and Gravel for an operating license under the Pits and Quarries Act has been scheduled for the Esqueving township council chambers, Tuesday, September 27 at 10 a.m.

A little touch of Germany comes to Milton

with the opening of



AT THE CARAVAN TAVERN MILTON PLAZA

We invite you to experience its warm and relaxed atmosphere

You may wish to try our Holzacker Platte (Lumberjack's Plate) a choice arrangement of smoked Kassler Rippenspear, Leberkaese, Bratwurst, and Liverwurst served with rye bread and garnish, or spend your lunch hour with a wooden platter of rye sandwich bread. Bratwurst and beer, the old favorite of course, is available.

Instead of tea, our wine and cheese may be just the thing in the afternoon. Steaks, roast beef dinners, sea foods and sandwiches complete our menu. Plus a complete selection of imported and domestic wines, beers and liquors available for your dining pleasure. Draft beer on tap.

CLOTHES THAT WORK OVERTIME

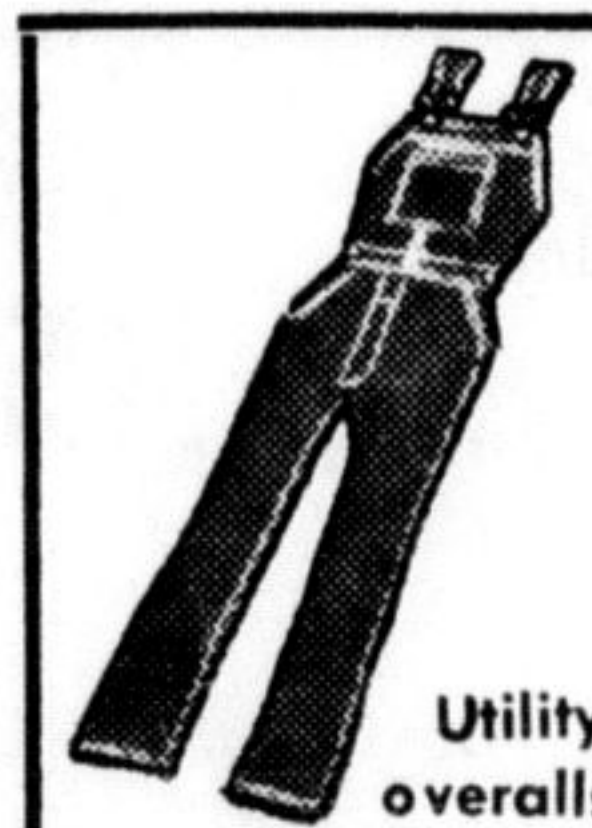
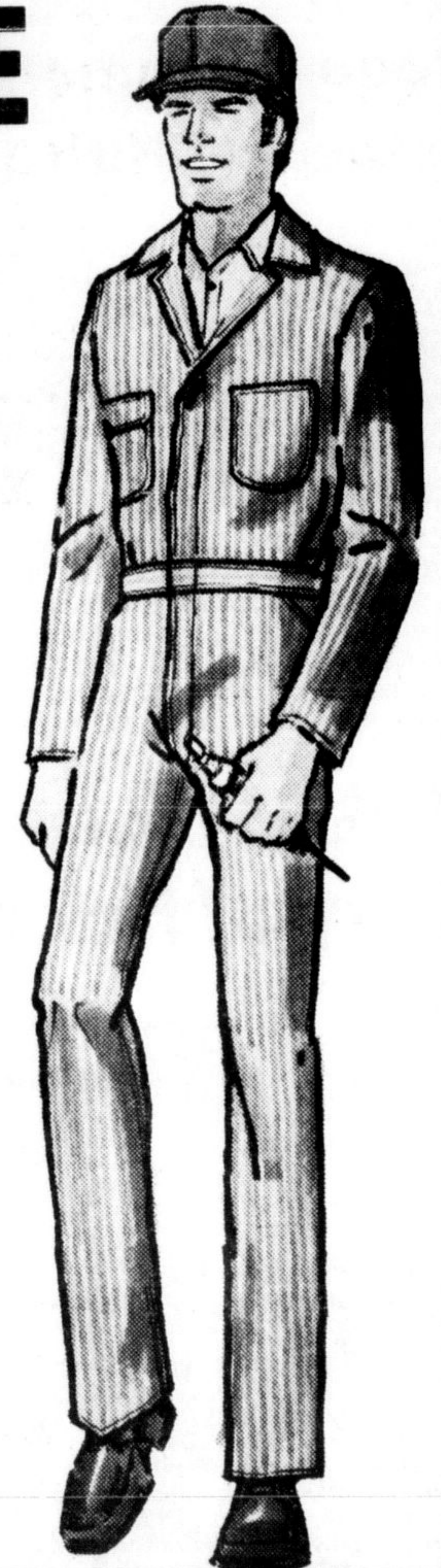


10% OFF

ALL WORK CLOTHES IN STOCK

- SHIRTS
- PANTS
- COVERALLS
- SOCKS

EVERYTHING FOR THE WORKING MAN



Utility overalls



Denim utility coat.

MILTON the DEPARTMENT STORE

Open Daily To 6 Thursday and Friday to 9 p.m.

200 MAIN ST. MILTON 878-9261

Use Your Chargex