



SWEEP WORKERS and Halton Region SWEEP workers serves Authority Chairman Barry Humphreys while Anne McKelvie and staffers enjoyed a barbecue and corn roast Wednesday. Brian Hall who co-ordinated the SWEEP workers as well. (Photo by B. Burt)

Two golf courses planned for area

Construction of one and plans for a second new golf course within a few miles of Milton are currently underway. Andy Bathgate and Vic Hadfield, both of National Hockey League fame, are co-owners of a course that is being constructed on Walker's Lane just south of Five Sideroad in North Burlington.

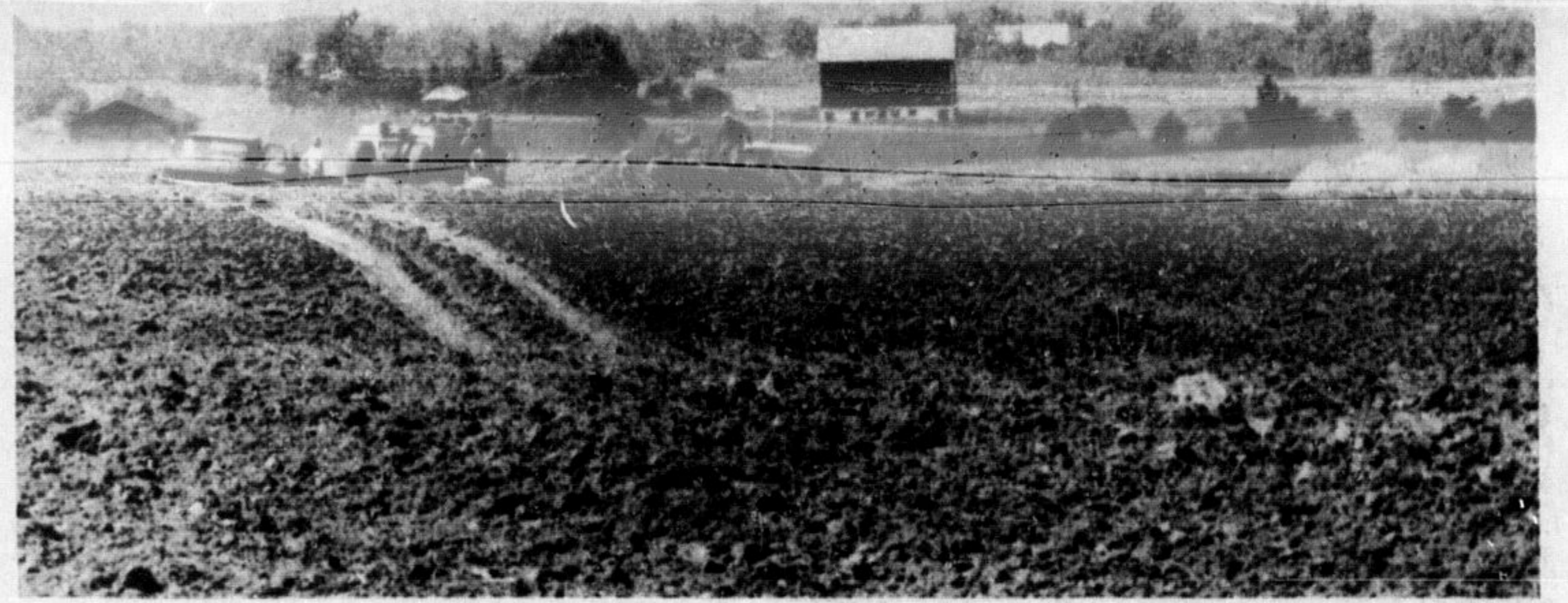
At the second area on Trafalgar Rd. just south of Drumquin, Fuller Brothers are contemplating turning a 100 acre farm into a nine hole course.

They have preliminary approvals from Oakville Planning Board and intend on making a

second submission to the Oakville Board Sept. 21.

Preliminary stages While plans are still in the preliminary stages, Ray Fuller noted one point in favor of the development would be that the area would still provide a green belt area. It is presently used as a riding stable.

The Hadfield-Bathgate proposal is further along the line. Currently earth movers are busy at work changing the contours of the land. The course is expected to be open next summer. It will be an 18-hole course spread over the 150 acres.



HEAVY MACHINERY operators were busy the past few weeks moving land and changing the contours. Eventually this site on Walker's Lane will be a golf course. Principals behind the project are Andy Bathgate and Vic Hadfield. (Photo by B. Burt)

Fastball series tied one each

Last Tuesday saw Legion defeat the Meters by a score of 10-5. Carl Hymers hit a grand slam home run in the fourth to put Legion ahead. Dunc Currie pitched a good game, although in trouble at times. His team played errorless ball behind him. Lee McPhail in centre field covered a lot of ground with Roger Willford pulling off the catch of the year, to help his pitcher out of a hole.

Thursday night games saw the situation reversed as Meters turned the tables on the Legion by a 14-8 score. For Meters Ed McLeod had a triple, and a double, being the big hitter.

Legion batters were up against good pitching.

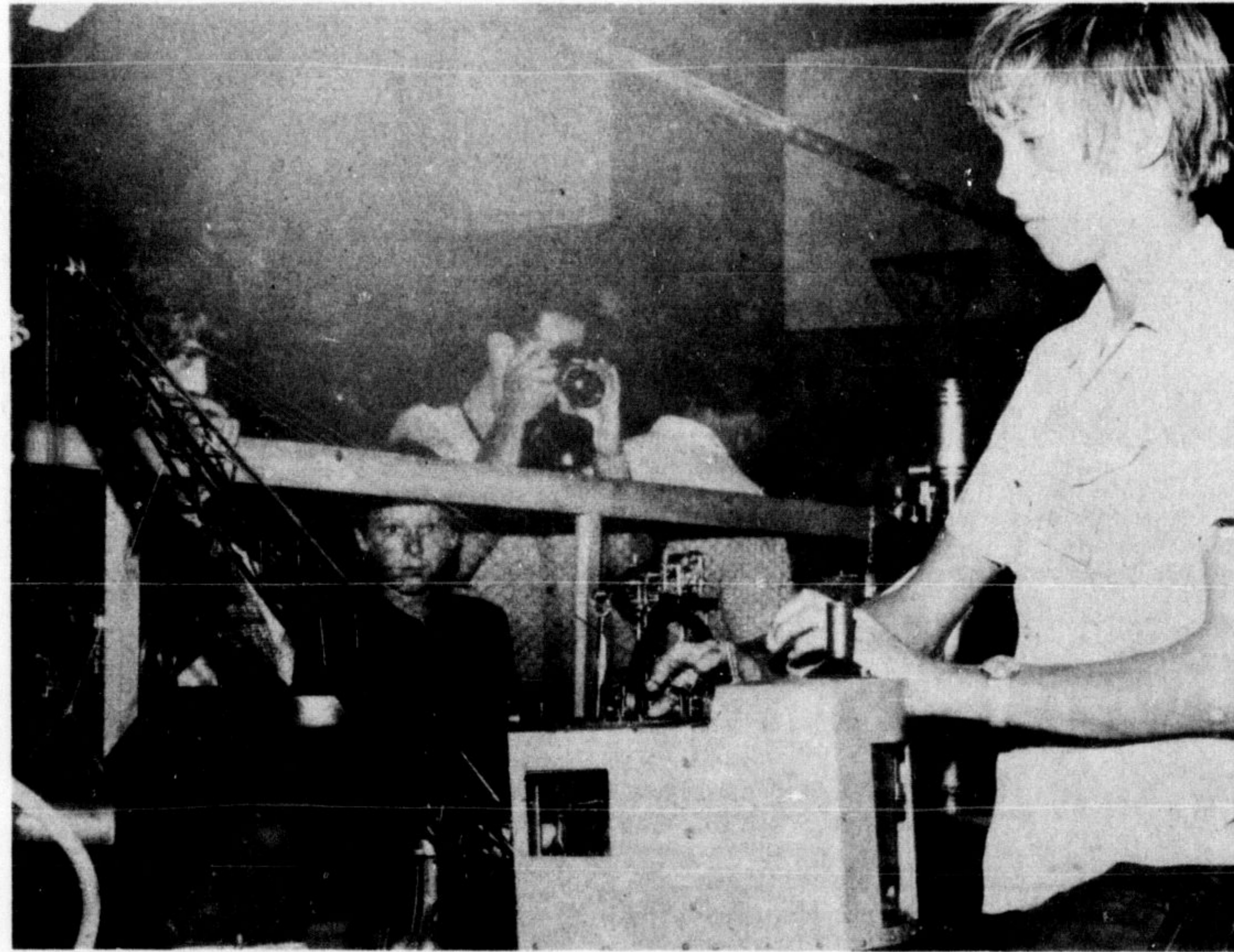
The game was marred by hot tempers. Games next week at Rotary Park on Tuesday and Thursday at eight p.m. The series is the best four out of seven, now tied at one game each.

GERTRUDE BY TROGDON



Free Colour T.V. Service Forever!
WHEN YOU RENT A NEW **ZENITH**

FROM **RICHARDSON T.V. AND APPLIANCES**
201 MAIN ST. MILTON 878-6949



BOB COLGEN of Hornby was kept busy operating this steam crane, which his father took five years to build. The crane can be operated by compressed air or on live steam. (Photo by J. Jennings)



Special PURCHASE
from **RESTONIC**
a famous mattress specially made for us in discontinued covers!

FROM **\$39.95**

- Extra Comfort—Extra Quality—Extra Value
- hundreds of deep spring coils
 - thick layers of felted cotton
 - pre-built quilted border
 - non-sag inner-roll edge
 - convenient handles for easy turning
 - fresh air ventilators
 - insulated against noise and coil feel

By special arrangement, we were able to secure these mattresses in discontinued patterns used for nationally advertised Restonic products. The manufacturer offered these at an unbelievable discount! Now, we are passing our savings right on to you. These are new, fresh, clean mattresses especially made for us.

WE CAN'T REPEAT THIS SALE!
TAKE ADVANTAGE OF OUR LUCKY BUY WHILE YOU CAN!

get full support with a matching **BOX SPRING** at the same **SALE PRICE**

CONTINENTALS
\$59.95

Bank Financing Available

RICHARDSON'S
201 MAIN ST.
MILTON



SELLING OUT!

EVERYTHING MUST GO!

We must sell everything out to the bare walls and we slashed the price on over 11,000 items to do just that. Anything that is worn we have it. As we wish to clear, other dealers are welcome to buy at these prices.

Sale!

ON NOW UNTIL FURTHER NOTICE.

GIRLS PANT SUITS Reg. \$5.98 Selling Out Price \$3.97	ALL WORK CLOTHES — SHIRTS — PANTS — OVERALLS Reduced to Prices Starting at \$1.88	HOT PANTS Save \$4.00 Assorted Colours Out They Go At \$4.97
SNOW SUITS ALL NYLON Insulated—Just the thing for the months ahead. \$7.88	BELTS — WIDE OR NARROW Many Colours—All Leather Reduced to Clear from 99¢	BATHING SUITS Get in the swim with these wild ones Selling Out From \$2.66
SHORT SETS One piece stretchy or 2 piece nylon Terrific Value \$1.77	SNOWMOBILE BOOTS Top Quality—Blue with Yellow Trim Reg. \$8.98 Sell Out Price \$5.81	PANTI HOSE One size fits all Many colours to choose from Get several pair at this Price 49¢
GIRLS SHOES Black Patent—Strap Models. \$2.88	BULKY KNIT 100% WOOL SWEATERS Several Colours Reg. 12.98 To Clear at \$7.88	MATERNITY WEAR Dresses—Skirts—Slacks & Shorts in the lot Priced to Clear from \$1.86
BOYS 2PCE SHIRT & SHORTS Set Selling Out Price \$1.93	HEAVY WORK SOCKS Clear Out Prices 2 pair \$1.44	BLOUSES — BLOUSES — BLOUSES All Shapes—Sizes & Colours Priced at a New Low From \$2.88
BOYS LINED ALL WEATHER Reg. \$15.98 Now Only \$9.97	A FEW SUITS SPORT COATS ZIP IN LINING ALL WEATHER COATS Selling Out Price \$19.95	JUMPSUITS Stretchy—Many Colours and Styles— Lowest Price Ever \$3.78
NYLON JACKETS Infants Hooded—Water Repellant A Steal At 99¢	DOUBLE KNIT SLACKS - FLARES In Stripes or Plain Colours While they last From \$14.77	WINTER COATS Fur Trimmed—Various Shades Reg. to \$45.98 Now Only \$19.95
GIRLS BLOUSE Trimmed—Beautiful Styles No Iron Selling Out Price \$2.66	WORK SHOES Leather Uppers Saddle Tan or Black—Some Steel Toes Sell Out Price \$11.32	BRAS All makes—models—shapes and sizes Priced to Clear from 97¢

Tremendous Values Throughout The Store

Our Store Will Be Closed Mondays Open 9 to 6 Tues., Wed. and Sat. Thursday and Fri. till 9 p.m.

THE FAMILY STORE
29 Mill St. E. — Acton — 853-1851