

1500 participate in festival at M. Z. Bennett school Wed.

An unusually large audience enjoyed the Music Festival competitions at the M. Z. Bennett school, Acton, Wednesday of last week. School principal Elmer Smith was delighted with the interest shown by parents and friends this year.

About 1500 children participated from the M. Z. Bennett school, Acton; Martin St., W. I. Dick and J. M. Denyes schools in Milton, Percy Merry, Brookville, Pineview, Speyside, Fairview, Limehouse, Glen Williams and Snyders school. Snyders was entered for the first time. Adjudicator was Roy Holton of Mississauga, son of an adjudicator here several years ago. He said all the choirs were of high calibre.

Susan Bruce of the M. Z. Bennett school introduced the adjudicator. Trophies were presented to the top three entries in each of 11 classes.

Big winners

Martin St. School, Milton, had seven entries and took six trophies—four firsts, and two seconds, for the outstanding record of the day.

Festival chairman was Ralph McKeown, principal of Limehouse school.

This year's festival was considered very successful by the committee in charge.

11 classes

Results are: Triple duet, grades 5 and 6, enrolment 250 and over: Martin St. A., J. M. Denyes, Pineview. (Nine entries).

Primary choir grades 1 and 2, enrolment 250 and over: Brookville, Fairview, Pineview. (Four entries)

Japanese purchase cattle

Two Japanese, currently working on Ontario dairy farms, purchased cattle from area herds at the third annual Royal Review sale of Holsteins held at Guelph on May 10.

Yukio Kurosawatsu and Thomas Ikeda of Galt paid \$9,900 to Claude Pickett of Georgetown for a bred heifer Pickland Texal Ellen, daughter of the All-Canadian Aged Bull of 1971, Thornlea Texal Supreme. W. J. Proud of Oakville supplied the \$6,000 Very Good six-year-old cow Oak Ridges Texal Peg.

At the same sale, Jeffrey Nurse of Georgetown received \$4,500 for a bred heifer sold to H. Korbel of Chilliwack, B.C.

The sale had an average price of \$5,146 on 25 animals and top price of the day was \$15,000 paid for a two-year-old R. J. Stewart of Bolton bought from Ebyholme Farms of Ayr.

Carney consignor

The same day the Brubacher Show Window consignment sale of Holsteins was held at Guelph, realizing \$69,830 on 54 head for an average of \$1,293. Foreign buyers purchased cattle for U.S., Italy and Belgium bidders.

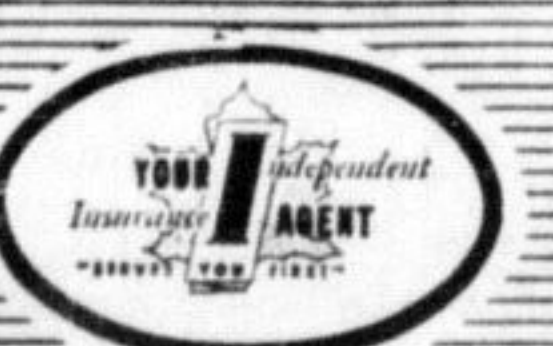
Top price for a female was \$2,600, paid by Glenafton Farms of Alliston to joint consignors James W. Carney of Georgetown and R. D. Graham of Erin, for a bred heifer Blackie C Emperor.

Second highest price was \$2,500 paid by Canimpex Livestock Ltd. of Georgetown for an unnamed Belgian buyer, for a bred heifer from Peter Moyer of Mildmay. Canimpex also bought three other bred heifers at prices ranging from \$1,300 to \$1,600. Jim Carney also sold a milking female to Ebydale Farms, New Dundee for \$1,750.

Funds still trickling in

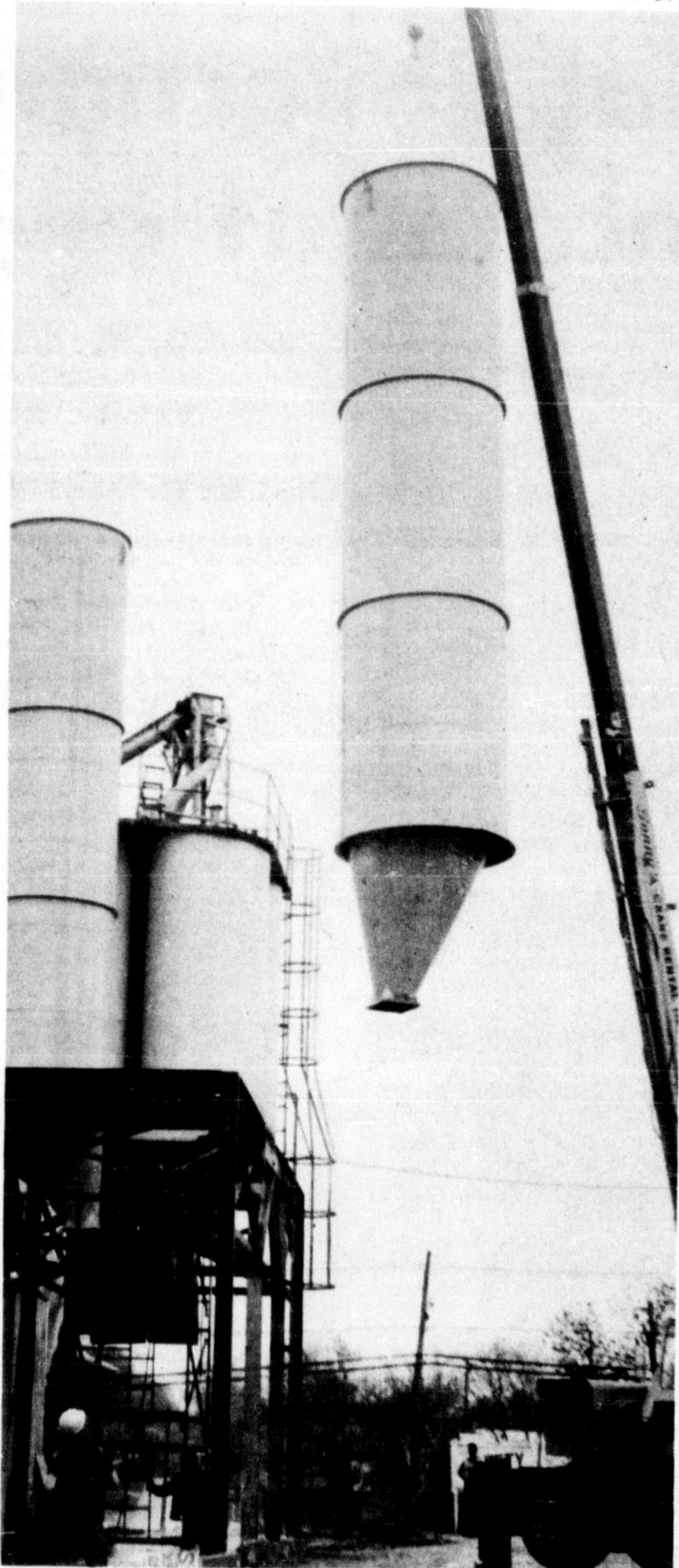
Proceeds for the local cancer campaign are still trickling in, but it appears the Milton and District Unit of the Canadian Cancer Campaign will fall short of the goal.

Treasurer Audrey Brush said \$6,160 has been collected and only a few people have yet to be heard from. The goal was set at \$6,900.



A. T. MOORE
Insurance
CAMPBELLVILLE
854-2271

Intermediate choir, grades 5 and 6, enrolment 250 and over:



UP IN THE AIR this week eight large new feed tanks at the Martin St. mill of Supersweet Feeds. The tanks, six feet across and about 28 feet high, will each hold about 15 tons of feed reports mill manager Sergio Zoppas. The mill is extending its loading platform to speed up the loading of trucks hauling feed. A tall crane was brought in to hoist the tanks and welders fastened them into place. Photo shows the second tank being hoisted Monday afternoon. (Photo by R. Downs)

Martin St., Percy W. Merry, Pineview. (Five entries)
Junior choir, grades 2 and 4, enrolment 250 and over: Pineview, Brookville, J. M. Denyes. (Five entries)
Boys' choir, unchanged voices, Brookville, M. Z. Bennett, Speyside. (Five entries)
Triple duet, grades 5 and 6, enrolment 250 and over, Speyside, Glen Williams, Limehouse. (Four entries)
Primary choir, grades 1, 2, 3, enrolment 250 and over, Limehouse, W. I. Dick, Glen Williams. (Four entries)

Junior choir, grades 4, 5, 6, enrolment 250 and over, Speyside, Limehouse, Glen Williams (Five entries)
Senior choir, grades 7, 8, enrolment 250 and over, Stewarttown, Martin St., M. Z. Bennett. (Three entries)
Senior choirs grades 7 and 8, enrolment 250 and over, Martin St., Fairview, Brookville. (Five entries)
Triple trio, grades 7, 8, enrolment 250 and over, Martin St. A, Martin St. B, Fairview B. (Six entries)

O.M.B. Approves Forecast

Ontario Municipal Board approvals came rolling into Milton Council chambers Monday evening, as the OMB forwarded official blessings for several local projects.

First received was the OMB approval for the town's five-year capital budget program, which includes \$2,056,500 in the current year.

Another okayed an expenditure of \$1,270,000 for the extension to the sewage treatment plant, another the \$455,000 reconstruction of Steeles Ave. between Martin St. and Ontario St., another the \$100,000 expense for the new town works department building on Nipissing Rd. and another the \$97,000 for reconstructing Harrop Dr.

The Halton County Board of Education

Home Economics program council will present its Annual Report at a meeting open to the public on

Wednesday, May 24, 1972, 7.30 p.m.

to be held in

Committee Room B, Central Administration,
2050 Guelph Line, Burlington, Ont.

ROXY THEATRE MILTON

878-3272 or 878-3208

<p>Thu. 18 Fri. 19 Sat. 20</p> <p>"MASH" "MASH" is what the new freedom of the screen is all about." —Richard Schickel, Life</p> <p>MASH DONALD SUTHERLAND, ELLIOTT GOULD, TOM SKERRITT</p> <p>Showtimes: Thurs. 8 p.m. Fri. & Sat. 7 p.m. & 9 p.m.</p>	<p>Saturday Matinee 20</p> <p>"The Wizard of Baghdad" JACK SHAW, BARRY COE</p> <p>Sudden Terror MARTIN DONOVAN</p> <p>Saturday Matinee 2 p.m. 50c — Children 75c Students & Adults</p>
<p>Sun. 21 Mon. 22 Tue. 23 Wed. 24</p> <p>MAN-EATER "BLUE WATER, WHITE DEATH" The Hunt for the Great White Shark A CINEMA CENTER FILMS PRESENTATION TECHNICOLOR</p> <p>Showtime 8 p.m.</p>	
<p>Thu. 25 Fri. 26 Sat. 27</p> <p>WARREN BEATTY and GOLDIE HAWN "(\$)" (Dollars) M. J. FRANKOVICH Produced and Directed by RICHARD BROOKS Distributed by COLUMBIA PICTURES</p> <p>Showtime Thurs. 8 p.m. Fri. & Sat. 7 & 9 p.m.</p>	<p>Saturday Matinee 27</p> <p>Something Special "Flight of the Days" BOB MOON, JAY WALKER Directed by RALPH NELSON</p> <p>Saturday Matinee 2.00 p.m. 50c Children 75c Students & Adults</p>

Dutch Canadian Country Club

LADIES' NIGHT DANCE

at The Canadian Legion

Saturday, May 20th

• Corsages • Refreshments
Orchestra - Golden Melodies

ALL ARE WELCOME
For Enquires Call 878-6529

ITALIAN CANADIAN CLUB OF MILTON

Box 92

SUPPER DANCE

IN HOLY ROSARY PARISH HOUSE — MARTIN ST.

SATURDAY MAY 20, 1972

Roma's Orchestra

SUPPER SERVED AT 7.30 P.M.

DANCE 8.30 to 1 A.M.

No Tickets available at the door
Contact any committee member

Members \$4.00 each Non members \$4.50 each.

Come & Enjoy Yourself - Everyone Welcome

Enthusiastic response to SPIN

Residents of Nassagaweya are responding enthusiastically to the Stop Pollution in Nassagaweya (SPIN) program, according to Mrs. Basil McDonald.

Mrs. McDonald's husband collects SPIN's collection of reusable garbage at depots in Eden Mills, Campbellville and Brookville on the first Saturday of each month.

trips to gather the May collection, reports his wife. Most of the people depositing waste material are taking time to tie their paper bundles, although some have forgotten to do so, says Mrs. McDonald.

McDonald stores the waste material in his barn, until he has enough material collected to take to recycling or waste firms in Guelph and Hamilton.

—Most homeowners have given their grass its first cutting of the season.

—24th of May holiday this weekend, most stores will be closed Monday.

—This weekend is the Victoria Day holiday and many will be heading north to fish or open the cottage.

THE WINNER
of the
OPTIMIST CLUB
of Milton

50 - 50 DRAW

For the Month of April, 1972

F. J. PERROTT
260 Kingsleigh Ct.
MILTON, ONTARIO.

LIONS BINGO

THURSDAY, MAY 18th

- 5 - EARLY BIRDS — 7.30
- 14 - REGULARS — 8.00
- 2 - SPECIALS
- 2 - JACKPOTS 53No's. '230
52 No's. '550

Milton District High School

GET YOUR TICKETS NOW FOR THE

TOMMY HUNTER

SHOW AND DANCE



FEATURING:

Popular
T.V. Star
Tommy Hunter
and The
Rhythm Pals . . .

AT
MILTON ARENA
SATURDAY, JUNE 10

<p>Tommy Hunter Show 8.30 to 9.30 p.m. —Come Early—</p>	<p>Dancing From 9.30 p.m. till 1 a.m.</p>
---	---

PLUS REFRESHMENTS — SNACKS — DRAWS — PRIZES

SPONSORED BY
MILTON COMMUNITY SERVICE CLUBS

ALL PROCEEDS FOR NEW COMMUNITY COMPLEX

TICKETS AVAILABLE NOW AT:

- Harris Stationery & Office Supplies
- Christie & Woods Real Estate
- Milton Travel Service
- Any member of the Lions, Optimist or Rotary Clubs
- Or any store where The Tommy Hunter Show signs are displayed

ADMISSION Advance tickets \$5 per person
at the door, \$6 per person.