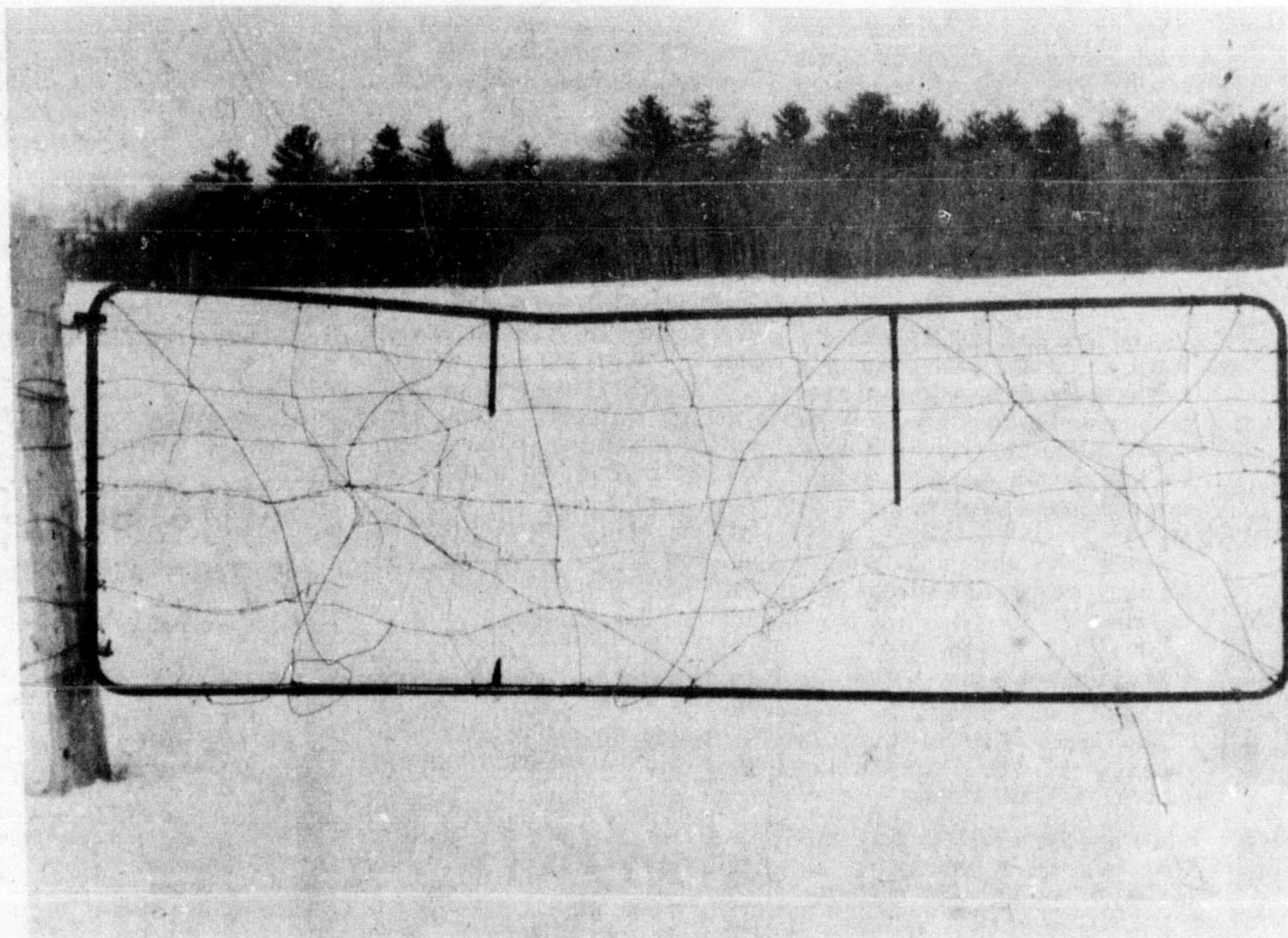
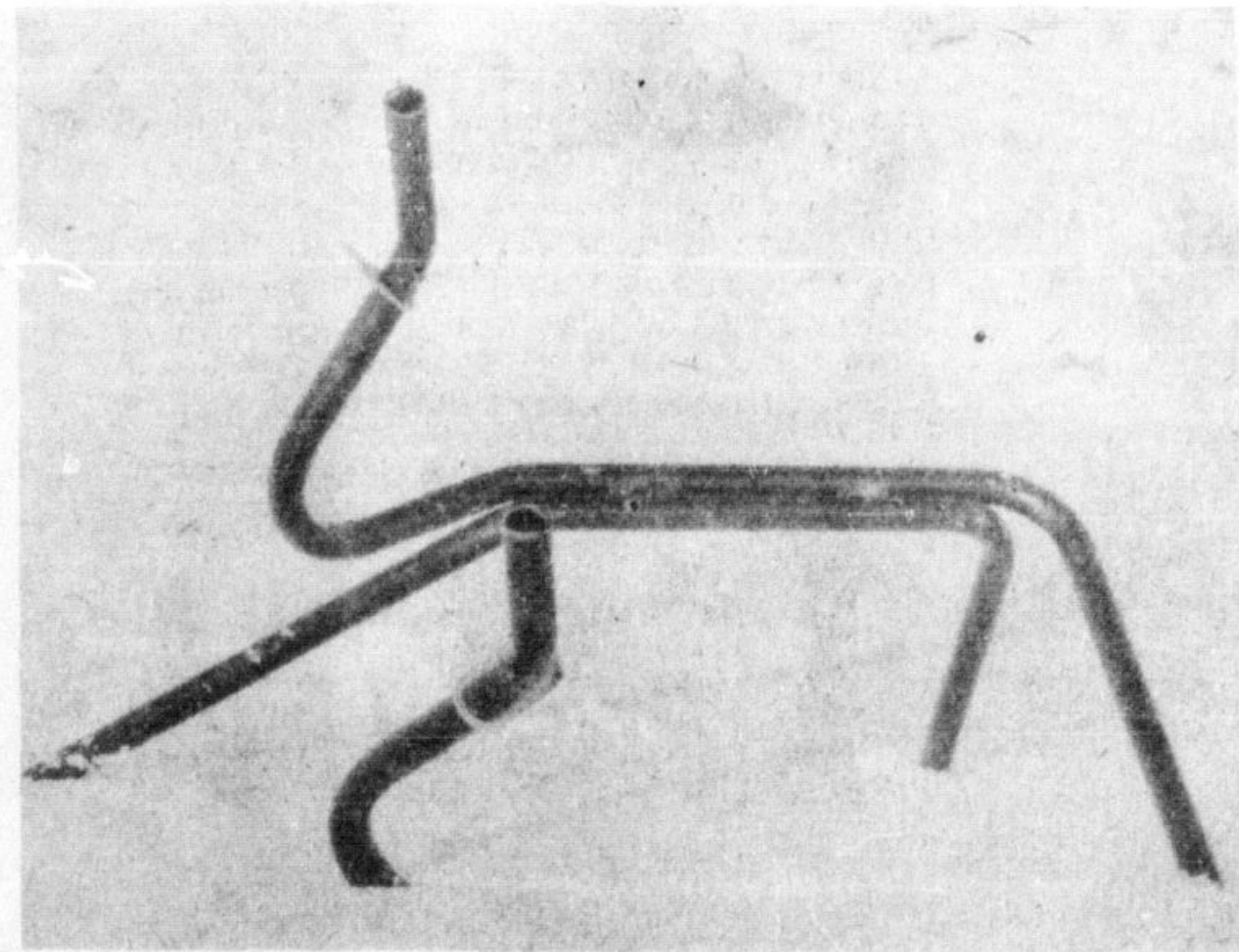


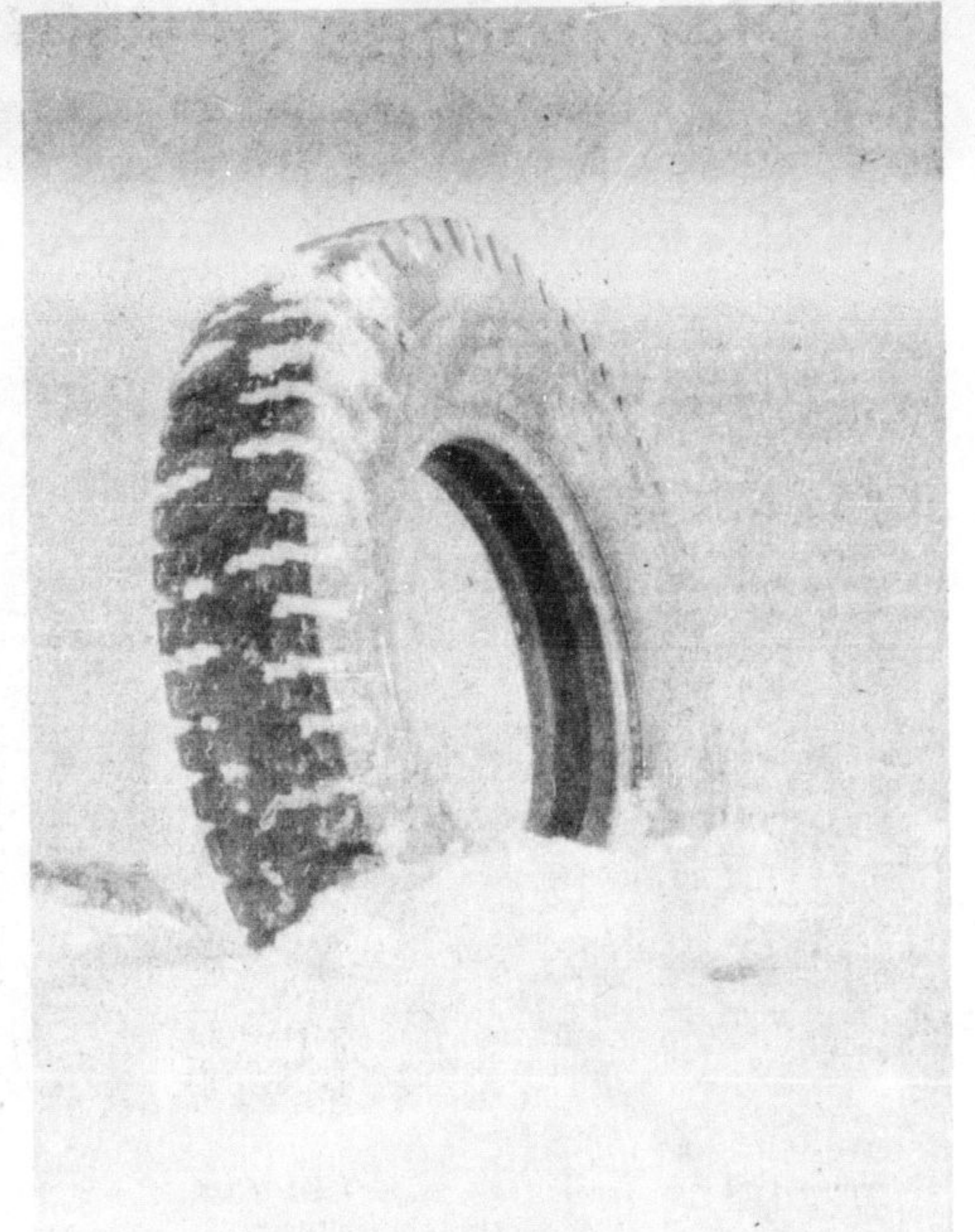
# Beauty, art, messages in junk



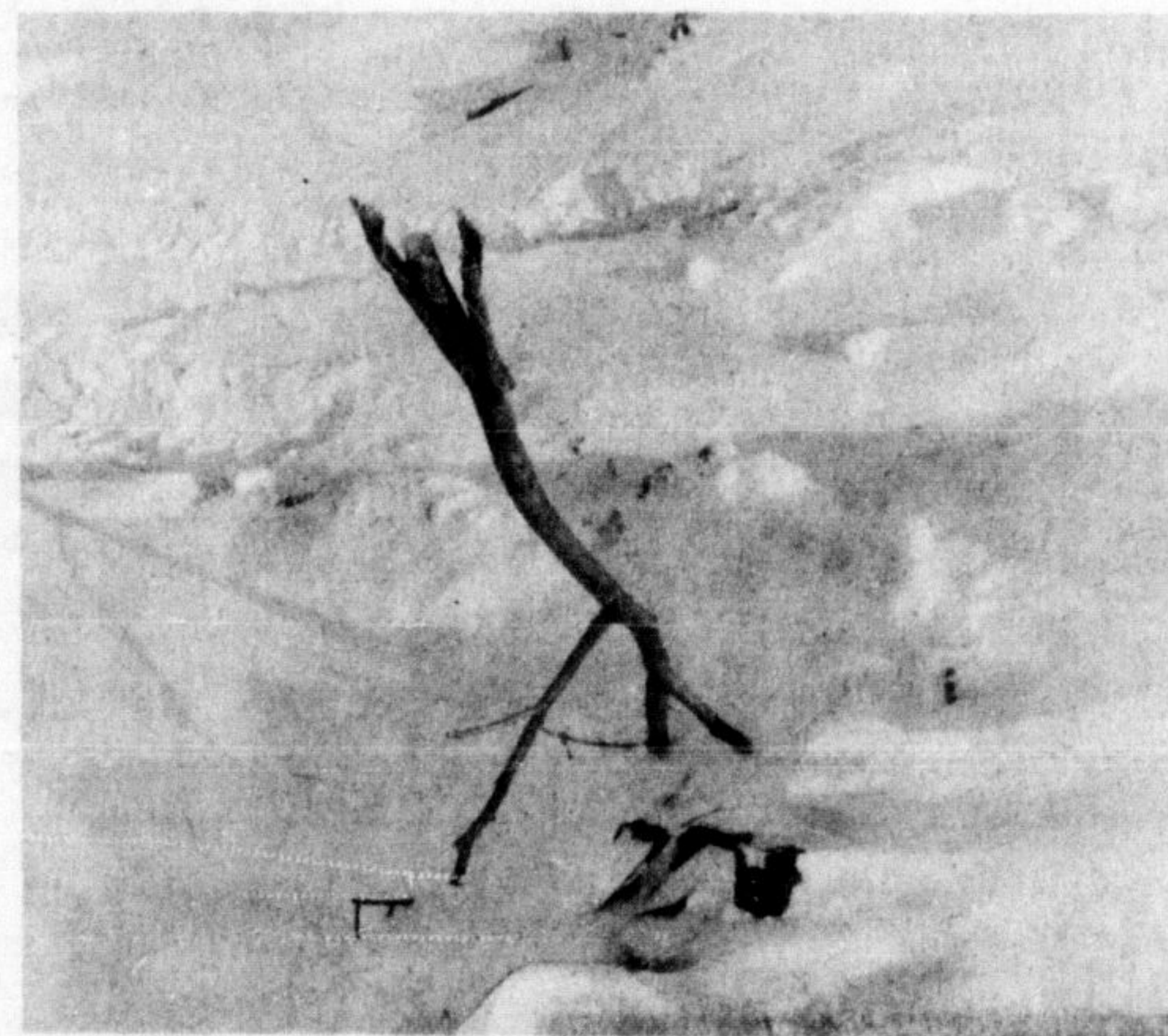
A RUSTIC opening to the gate of life or the beginning of time?



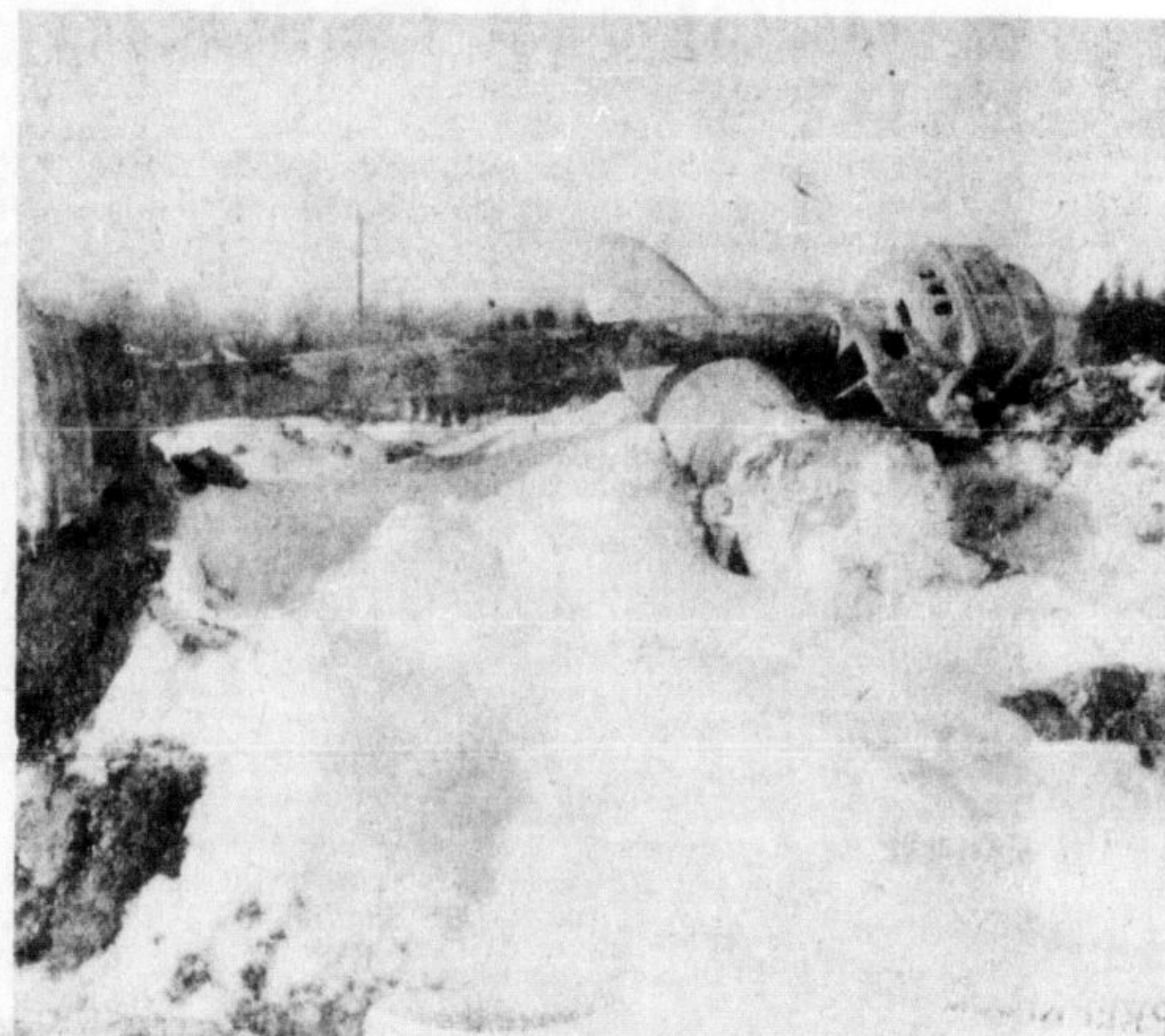
LIFELESS OBJECTS discarded by man become visions of beauty on a mid-winter's day. Silently they stand, unmoved by the changing of time or by the activities of man. Oh, what a story they tell. The snowfalls of March create works of art out of man's castaways. We wanted to show you that beauty is in the eye of the beholder, so we took our cameras into Milton's sanitary landfill site, where these pictures were taken except for the picture of the gate and the fence—common sights in the countryside around Milton.—(Staff Photos)



THE WHEEL of progress? But then one's idea of progress differs from another's.



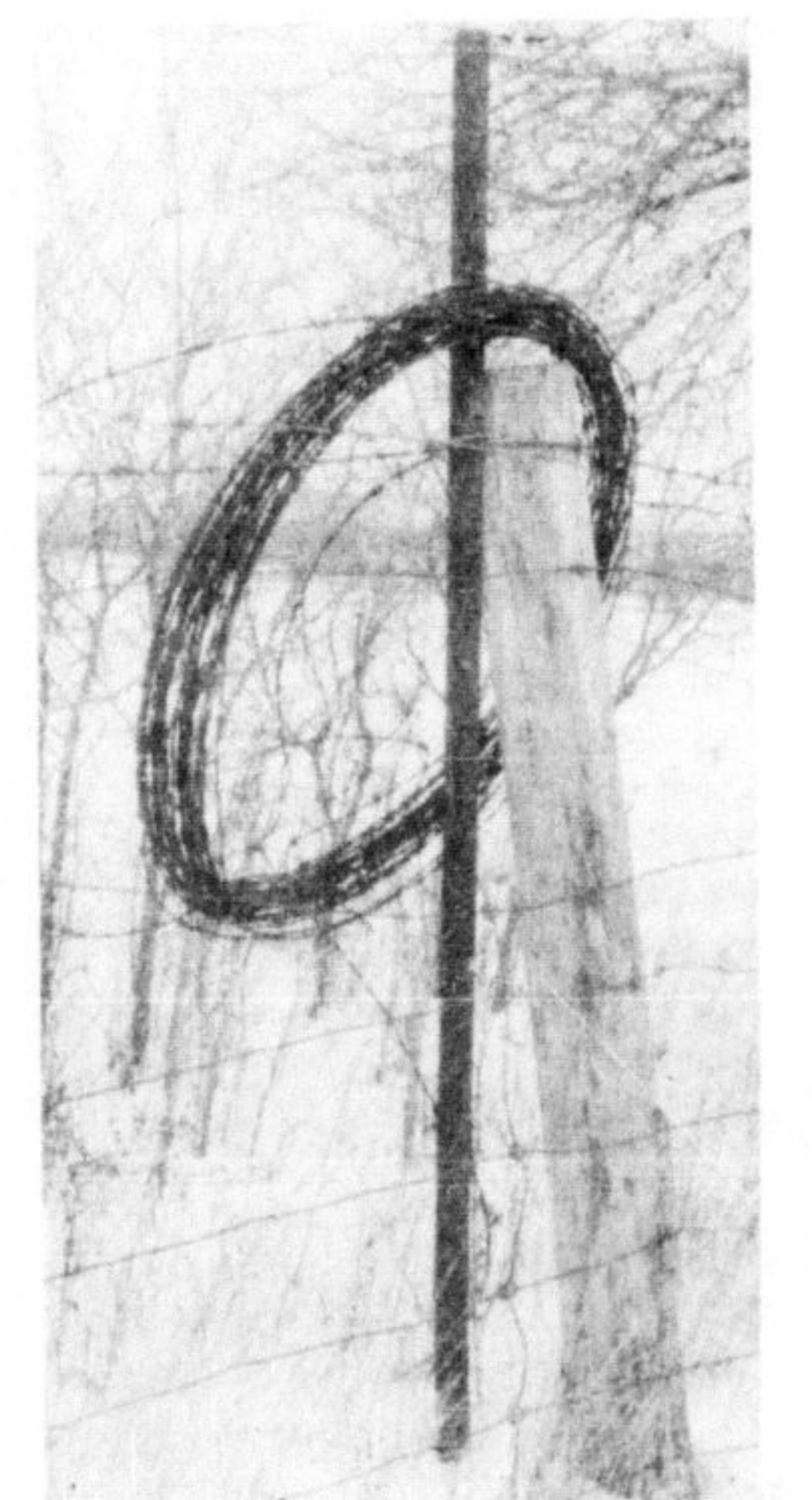
MAN'S CONTRADICTION nature... Peace...



OR WAR? A cannon-like creation.



A TUNNEL of life, or death?



LEADING TO a fenced-in world. The Berlin Wall?

## End-to-end hike along Bruce Trail

Members of the Toronto Bruce Trail Club are preparing for their sixth annual end-to-end hike of the 26-mile Halton section of the Bruce Trail for which the club is responsible. It will be held on Sunday, April 23 and the strenuous hike is expected to last all day.

Hikers are to meet at the Fifth Line Nassagaweya just south of Five Sideroad at 7.30 a.m. They'll leave their cars there and be bussed to Terra Cotta, then walk back to the cars. Fred Turner is leader for the annual end-to-end.

"Nature Walk Day"  
The club has planned a hike from Limehouse to Speyside on Saturday, May 6 to celebrate "Nature Walk Day". The Federation of Ontario Naturalists has proclaimed this as one day when all organizations or individuals interested in nature, conservation or outdoors should show their interest by planning walks. The club's bus will pick up

—All women in Milton and district are invited to the Cancer Society's pap test clinic Saturday, April 8 at Milton District Hospital from 9 a.m. to noon.

hikers in Toronto and transport them to Limehouse.

On the same day, some Toronto Club members will be taking a 25-mile end-to-end in the Dufferin section near Mono Centre. Only Bruce Trail members are eligible to receive a chevron for completing that walk.

U. S. Visitors  
A hike, dinner and social evening with international connotations are being lined up for Saturday, May 13 when members of the Genesee Valley Hiking Club from Rochester, N.Y. visit the Toronto group for a day's hike and social weekend. The Rochester group hosted many Ontarians to a hiking weekend recently.

The Rochester group will arrive on Friday evening and

spend the night in homes of Toronto members. Hiking starts at 9.45 a.m. at the Halton Country Inn on Sixth Line Nassagaweya and the two hikes are being offered, one of six miles and one of eight miles in length. Both hikes will end at the Inn and the day will conclude with a steak dinner, socializing and a slide talk on a hike to the Mount Everest Base Camp in the Himalayas, by Don Sutherland.

A June 4 hike will follow five miles of the old Guelph-to-Acton radial line trail.

**A. T. MOORE**  
Insurance  
CAMPBELLVILLE  
854-2271

## West End

MEAT MARKET

WE SERVE THE EAST END TOO

MARCEL — JIM & ROSS HOLMES  
TO SERVE YOU

SPECIAL OF THE WEEK

Rock-Ella Farms — Fresh, Medium

EGGS 2 Doz. 69¢

Maple Leaf BACON 69¢ Lb.

Maple Leaf POLISH SAUSAGE 69¢ Lb.

LET US FILL YOUR FREEZER  
RED BRAND BEEF

FRONT 63¢ lb.

SIDE 73¢ lb.

HIND 83¢ lb.

**WEST END**  
MEAT MARKET

140 MAIN ST.

878-6501

**J. R. Currie O.D.**  
OPTOMETRIST  
BURLINGTON  
MALL  
TELEPHONE 632-7788



**Fuel OIL**

FOR COLD  
WEATHER  
PROTECTION

878-6380

Your Shell Dealer

**BELL BROS.**

MILTON

# SHOPPERS DRUG MART

WISHES TO ANNOUNCE

THEIR

**GRAND OPENING**

WEDNESDAY, APRIL 5th

IN THE

**GEORGETOWN MARKET CENTRE**

PHONE

**877-2291**

CONVENIENT SHOPPING HOURS

Monday to Friday.....9 A.M. to 9 P.M.

Saturday.....9 A.M. to 8 P.M.

Sundays and

Holidays.....11A.M. to 6 P.M.