

Possible pickets worry Reeve Hill

Esqueing council's main concern at a brief meeting Monday night was the possibility residents near a proposed home nursery school might be picketing the house.

Reeve Tom Hill suggested neighbors there were considering picketing because they felt the township council wasn't doing anything about opposing establishment of a school situated at the west half of Lot 5, Concession 4. But, he said, until Mrs. K. Sonne tells us what she is running there—a day or nursery school—there is nothing the township can do.

Warned

Councillor Dick Howitt said he had been in touch with Mrs.

Cummings of the county social and family services and she was to have warned Mrs. Sonne that if she pursued her announced objectives she would be charged by county authorities.

Councillor Howitt said Mrs. Sonne had no licence to operate from her home. However, she also said it was permissible for the lady to take as many as five children in the house.

"Well, I hope the press lets Mrs. Jones know we have been working on this and trying to come up with the solution," said Hill.

It was also suggested that Mrs. Sonne might be giving up the idea of a school and moving to Milton.

Express opposition to moving fountain

"We would be open to too much criticism if we move the old horse trough," Councillor Art Melanson warned members of Milton Council this week as they discussed, for the second week in a row, the possibility of moving the 82-year-old fountain and drinking trough from its location at the town hall to a new spot at the mill pond.

Reeve Ron Harris wants the fountain moved and a renovation program undertaken at the small parkette at the front of the town hall. He also suggested the Costigan memorial fountain, which occupies the same plot of ground, could be moved to the centre of the plot as a focal point

for a display of trees, shrubs and flowers.

Not in favor

But tight money this year has postponed the project until 1972. Councillors agreed to delay their decision until the new year. Councillor Syd Childs also said he was not in favor of moving the drinking fountain "under any consideration."

Works superintendent Bruce McKerr, who sat in on the Monday meeting, said it wouldn't be too expensive to install a new continuous flow drinking fountain at the Centennial Park pond, if one was needed. This type was recently installed in Rotary Park at the ball diamonds and he felt it was "nearly vandalism-proof".

254 condominiums

(Continued from Page 1)
\$8,000 toward sewage pumping facilities, plus capital levies of \$1,040 per unit on the row housing and \$1,145 per house.

Fat up to limit

Councillor Charles Fay expressed concern at Monday's meeting that council's release of the project would eat up a big share of the additional 2,800 population to which the town is currently limited. The Ontario Department of Municipal Affairs has warned council it cannot expand beyond the 2,800 additional persons limit, until contracts are signed for the expansion of the sewage treatment plant. The contract is expected to be let next spring. Meanwhile three developers have been given the green light on 467 single family homes in the north-east corner of town and the expected population there, coupled with the Chaingate proposal, is estimated at 2,689 persons.

Turn rest down?

"Do we have to turn down every other building permit?" queried Councillor Fay. Clerk Jack McGeachie explained once the contract is signed to expand the sewage treatment plant, the DMA will lift

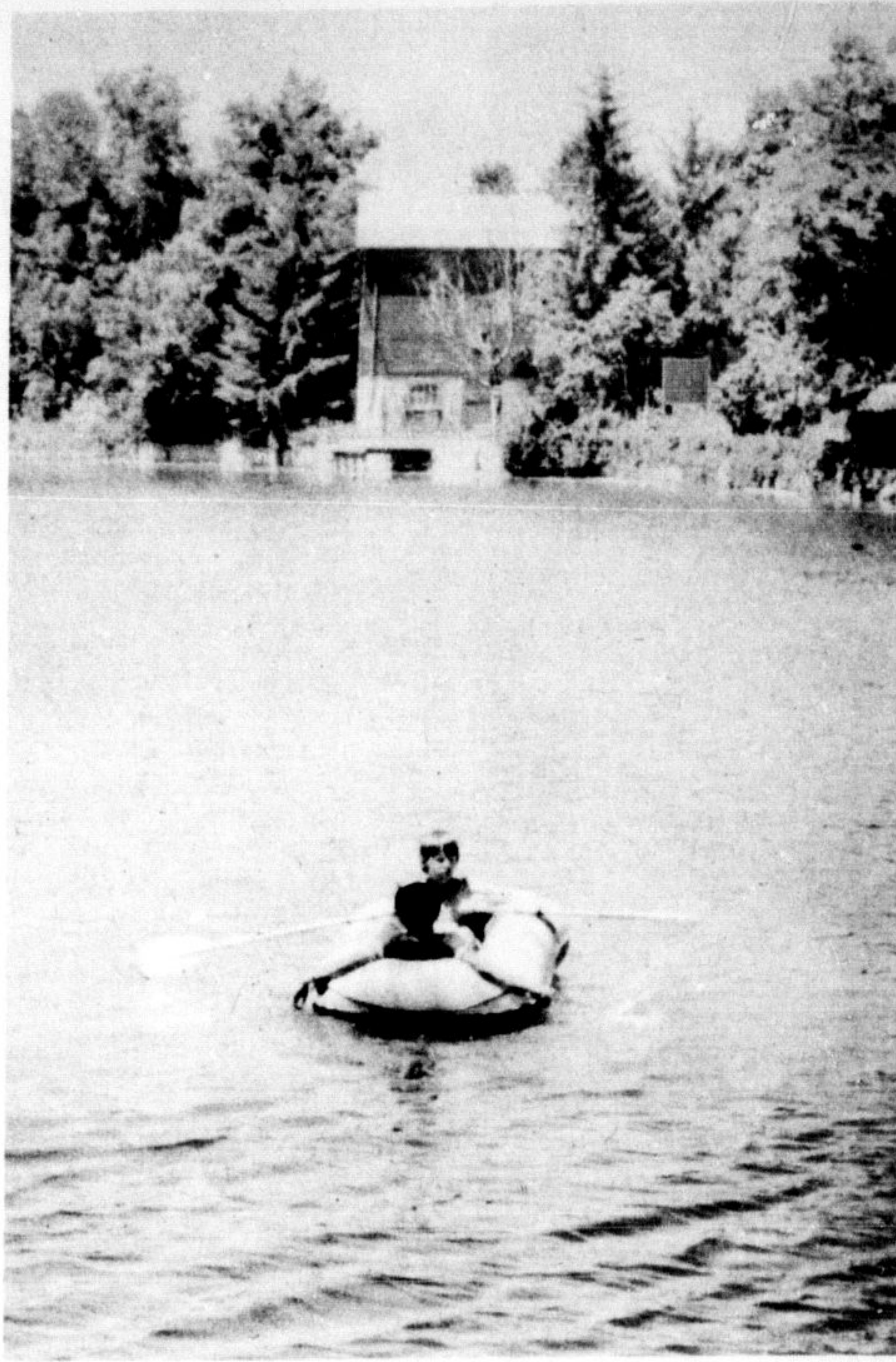
its freeze. Other councillors reminded him it will take several months of "red tape" and rezoning hearings before either the north-east quadrant developers or the Chaingate firm can start to build — no construction is counted on before next spring.

Langedyks open store

Former Miltonians Mr. and Mrs. Jim Langedyk, now living in Georgetown, have opened a new crafts and hobbies shop there and they were featured in a new article in last week's issue of the Georgetown weekly paper.

Mr. Langedyk, president of the North Halton Association for the Mentally Retarded which operates ARC Workshop at Hornby, says he plans to keep one showcase in his shop for a display of work done by adults at the workshop. Their store is a family affair—the three eldest Langedyck children, Mary, Robert and Jack are helping Mr. and Mrs. Langedyk run the shop.

Wild Cherry twigs taste like almonds.



DOWN BY THE OLD MILL POND these youngsters float aimlessly on their inflatable raft. The boys were caught by the camera as they drifted by the park, carried by the current into the centre of the pond. A nice salute to a warm summer's day! —(Staff Photo)

Obituary

Thomas Howden

A farmer all his life in the Hornby area, Thomas Forrest Howden, 81, of R.R. 4 Milton died quietly at his home on July 1.

An active and popular man, Mr. Howden was well-known throughout Halton. He was a member of Halton Plowmen's Association and had plowed in the Halton matches, area county matches and the international matches for many years. In his earlier days he was a member of Hornby Orange Lodge and Norval Rifle Club. Mr. Howden had played hockey for the Hornby team and was a popular violinist at dances and parties.

Born in Esqueing Township May 5, 1890, he farmed in Esqueing for many years. About 25 years ago the family moved to a north Oakville farm at the corner of Fifth Line and Given Rd. He retired from active farming about five years ago.

His first wife Laura Tuck died in 1935. He is survived by his second wife Lillian Ramsay, nine children, 22 grandchildren and three great-grandchildren. The

children are Edgar of Milton, Garnet of Hornby, Muriel (Mrs. Stan Eyre) of Norval, Ruth (Mrs. James Ford), Arnold, Doreen (Mrs. Jack Thorne), Carol (Mrs. James Brown) and Ken, all of Milton, and Bill at home. Also surviving is a sister Mrs. Arthur Ruddle (Floss) of Georgetown.

Rev. Lynn Adams of Hillcrest U. C. conducted the funeral service at McKersie Funeral Home on July 3. Interment was in Evergreen Cemetery, Milton. Pallbearers were grandchildren Bruce Eyre of Belmont, Murray Eyre of Ballinacra, Tom Eyre of Norval, David and Wayne Howden of Milton and Randy Howden of Hornby. Flower bearers were Bruce Ramsay, Ivan Shepherd, Kevin Howden, Michael Ford, Fred Finn, Douglas Howden and Loyal Ford.

Canada's boreal forest extends from Newfoundland to Alaska.

Twigs of Yellow Birch have wintergreen taste.

ARTHUR A. JOHNSON O.D.
OPTOMETRIST
218 Main St.
Milton
878-3673
Acton —
Wednesday and Saturday

A. T. MOORE
Insurance
CAMPBELLVILLE
854-2271

SPIN collection is small but organizers press on

"We're not disappointed or downhearted," Mrs. June Andrews explained as she commented on the limited success of the first attempt to SPIN (Stop Pollution in Nassagaweya).

Mrs. Andrews and the Campbellville W.I. organized a recycling program in Nassagaweya Township. The idea of the program was for residents to collect bottles, jars and tin containers, and at the given time on Saturday drop the materials off at one of the two depots.

Board moves to Burlington

Halton County Board of Education moves its headquarters from Oakville to Burlington next Monday, July 19.

New office accommodation has been provided at what was earlier the west education centre of the board, located beside M. M. Robinson High School at 2050 Guelph Line, Burlington. Since its inception the board has occupied the Singer building on South Service Rd. in Oakville.

Motorcycle, car collide

The handlebars and rear fender of a motorcycle were damaged when it was involved in a collision with a car on Main St. Friday. The cycle was driven by Gordon Poole of 86 Victoria St. and the car by Katharina Egger of R. R. 6, Milton.

Milton Police investigated. Neither of the drivers was injured.

Police also investigated another minor accident this week. Damages totalled \$140 when cars driven by Ricky Lee Boyd of Port Rowan and Richard Jordan of Oakville collided on Highway 25 south, Saturday.

From there the materials will go to Burlington to a larger depot and then on to Hamilton where the recycling is done.

Two depots

The two depots were set up at McPhail's (opposite the Campbellville Community Pond) and at Brookville Hall. Mrs. Andrews said there wasn't as much turned in as expected but felt that by

going ahead, more people are aware of the program. She is confident her group will meet with greater success this Saturday at the second collection.

"Some didn't really understand what we were doing even though they read about it," Mrs. Andrews said, noting that one hurdle the group must overcome is educating the public.

Chapter charter

Mrs. John F. Brown and son David of Brobar Farms, R. R. 3, Milton, recently enjoyed a trip to England on a charter flight sponsored by the Halton County Chapter, Multiple Sclerosis Society. Dr. Brown joined the family during their tour of England and travelled back with them.

The flight, organized by flight chairman Mrs. G. A. Walsh of Oakville, was for members and friends of the Society. Another flight is planned for August.

Auto Repairs

Making your car perform efficiently and effectively is our job. We want to prove to you that we guarantee our service.

- SERVICE THAT SATISFIES
- COURTESY THAT COUNTS
- PRICES THAT ARE COMPETITIVE



DON FRITZLEY
Service Manager

DON'S SPECIAL THIS WEEK

HOLIDAY SAFETY INSPECTION 3.75
Visually check steering, Lights, Brakes, Exhaust, Wiper Blades, Tires.

LET US PROVE OUR SERVICE TO YOU NOW
Call or drop in soon for an appointment.

COURTESY CARS AVAILABLE AT REASONABLE RATES

MILTON MOTOR SALES LTD

YOUR CONVENIENT GM DEALER SERVING ACTON AND MILTON

388 MAIN ST

MILTON

878-2355

SHOPPERS WHO KNOW SAVE MORE SHOPPING ALFONSO'S

Christie's — Reg. 33c Pkg. of 12 Plain or Sugar DONUTS 4/99c	Rich's 16 oz. COFFEE RICH Reg. 29c 19c	for Carefree Summer Eating FROZEN FOODS Sunshine MIXED VEGETABLES 2 lb. Pkg. 39c Reg. 57c
Christie's — Reg. 39c Pkg. of 9 DATE Turnovers 4/99c	Maxwell House COFFEE Reg. 1.19 Lb. Pkg. 99c	Evaporated Milk — 16 oz. Tall Tins CARNATION Reg. 2 for 41c 2 35c
Facelle Royale — 3 ply — Reg. 2 for 79c Facial Tissue 3 Pkgs. 99c	Facelle Royale — Reg. 77c 4-roll Pkg. Bathroom Tissue LARGE BOXES 4 Rolls 55c	Liquid — Reg. 97c 128 oz. Gal. Jug. Javex Bleach 65c

QUALITY RED OR BLUE BRAND BEEF FOR YOUR ENJOYMENT

Maple Leaf Vac Pac SLICED SIDE BACON Lb. Pkg. 55c	Maple Leaf Vac Pac WIENERS 49c	Maple Leaf Assorted — 16 oz. Pkgs. Luncheon Meats "Vac Pac" 65c
Swift's Premium COOKED HAM 99c Lb.	Fresh Lean BUTT Pork Chops 49c Lb.	Fresh "A" (FRYER) Chickens 37c Lb.
Fresh CHICKEN WINGS 3 L B S. 99c	Fresh Lean BLADE ROAST OR 63c Lb.	Fresh Lean CROSS CUT RIB ROAST 73c Lb.
Fresh Lean Chuck Steak 65c Lb.	Fresh Lean SHORT RIB ROAST 63c Lb.	Fresh Lean Wing Steaks 99c Lb.
Fresh Lean ROUND STEAKS 99c Lb. Full Cut	Fresh Lean Beef BONELESS POT ROAST 65c Lb.	
Fresh Lean PORK SPARE RIBS 3 Lbs. 99c	Fresh Lean PORK Shoulder Roast 3 L B S. 99c	

Fresh Juicy Sweet WATERMELONS 59c each	Garden Fresh PRODUCE	Fresh No. 1 Ont. Black Cherries 39c Lb.
Fresh California RED PLUMS 2 L B S. 49c	Canada Fancy No. 1 SPY APPLES 4 qt. Bskt. 59c	Fresh No. 1 Homegrown Green Cabbage 19c Head
Fresh No. 1 Homegrown — Large 24's CELERY 2 BCS 49c	NEW HOME GROWN POTATOES 10 Lbs. for 65c	Fresh Firm Crisp No. 1 Ont. LETTUCE 19c Head

ADVERTISED SPECIALS IN EFFECT TO 6 P.M. SATURDAY WE RESERVE THE RIGHT TO LIMIT QUANTITIES

ALFONSO'S FRUIT MARKET

174 MILL ST. FREE DELIVERY 878-2460

Syer's Summer Fashion CLEARANCE

Reg. to \$24.00 - 14.99
Reg. to \$18.00 - 12.99

DRESS Clearance

REDUCED TO COST PRICE

Sizes 8-20

GIRLS' JUMPSUITS & SHORT SETS

23X, 46X, 7-14

STILL LOTS OF SUMMER AHEAD SO STOCK UP NOW AT THIS BIG SAVING

25% OFF

Slims
Blouses
Skirts
Sets
Jewellery
Shells
Tops
Handbags

LADIES' 25% OFF SPORTSWEAR

228 Main St. Milton 878-2067

THE SAME BIG SAVING ON GIRLS' & BOYS' SHORTS & T SHIRTS

SIZE 2-14 T-SHIRTS ALSO 12-24 MONTHS

GIRLS' Dresses 1/2 PRICE

Ha
Si
After
last five
Alexan
Rosary
retiring
Her
Francis
principa
in Dun
been p
years.
Sister
St. Jose
in the
posting
finishing
and p
publicat
revision
complet
post g
Univers
She ta
Boa
C
t
In a bi
story to
Board of
state me
OSSTF
Ramaut
negotiat
and the
In the
board s
offered a
to the on
the plan
study.
Accord
3 the tea
teachers
percenta
similar t
Toronto
June 2
came to
teachers'
negotiat
organizat
Board th
committ
recommen
the teach
rejected
when 52
voted to
C
The re
appear
President
approval
has enun
reasons w
offer was
converted
tion of hi
vote of su
The boa
OSSTF p
saying 20
get no sal
incremen
cent of th
received
increase t
of those t
year. Min
relatively
Referrin
Ramautar
board with
of an addi
the board
of that fig
paid by th
and the
province.
have excee
budget fig
"The imp
remains b
longer true
The board
delaying
moving bo
the board'
common gr
gap still ex
to be unbr
"The dis
urged that
discussion'
conditions"
"By agre
and teacher
was to be
conclusion
took place
To urge th
simultane

ELE
Is Ou
Don't
Electric
★ HE
★ WE
★ NE
★ AD
★ OU
FEAT
EL
87