



IT WAS TOO NICE a day to stay at home, Hamilton, were among the fishermen at Kelso even if the big ones weren't biting. "Sunny" and Donna Cobbett, age seven and 10 from Saturday.—(Staff Photo)

### Kerr, Hassard presidents Home, School Associations for retarded

New officers for the 1971-72 season of both Bruce St. and J. M. Denyes Home and School Associations recently accepted their positions for the upcoming year.

An Ontario Hydro film, St. Lawrence Seaway, concluded the annual meeting of J. M. Denyes Home and School Association meeting. President of the Halton County Home and School Council, Mrs. Evelyn Oates installed the new officers during the meeting.

Accepting the positions were president Ken Hassard, vice-presidents Bill Mullin and Ray Banner, secretary Mrs. Mary Gooch and treasurer Mrs. Lorena Allan. Other committee heads and members will be chosen at the first regular meeting for the season, to be held at the school June 7.

**Return president**  
Mrs. Janice Kerr was returned for another year as president of Bruce St. Home and School Association. Mrs. Marg Taylor accepted the position of

secretary; Bob Mackay as treasurer, Mrs. A. Mackay as teachers' representative and Mrs. Marilyn Elsley as assistant social convener. Mrs. Ann Wollaston will be in charge of membership for the new year.

The group met at Bruce St. School May 24 and concluded the meeting with a discussion on the proposal by the Halton County Board of Education to close Bruce St. school.

New officers will be installed at a later date.

At night, the headlights of approaching traffic create driving difficulties. But another car's lights can be useful too, says the Ontario Safety League. Distant headlights silhouetted pedestrians who might otherwise be unnoticed until close at hand. On rural roads especially, drivers should watch closely for figures silhouetted against the glow of approaching headlights.

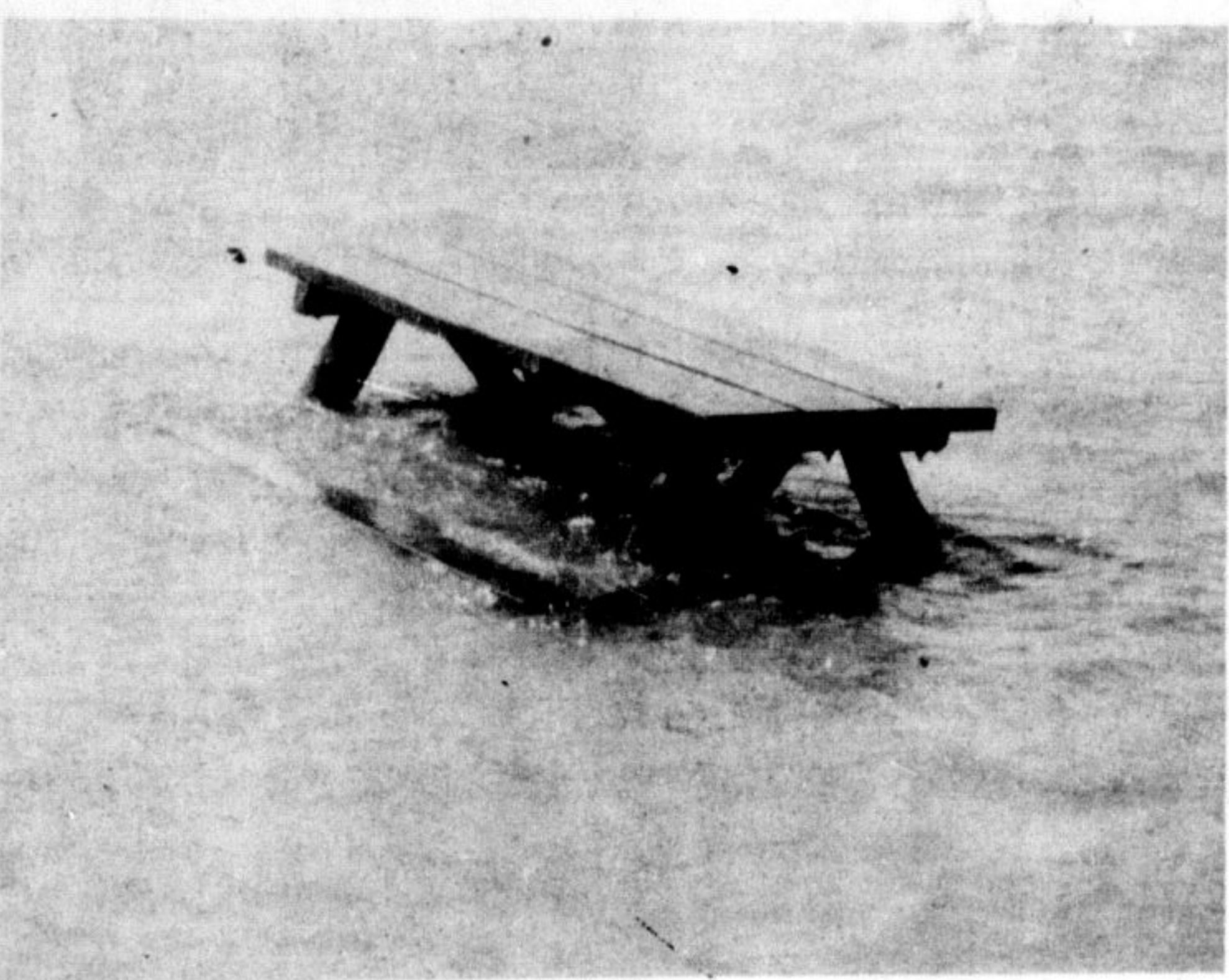
### Raise money for retarded

"Grade 4, Room 4, Holy Rosary School, Milton", was the signature on a recent donation received for the "Flowers of Hope" campaign, conducted by the Milton Ladies Auxiliary for the mentally retarded.

The amount, though greatly appreciated, is unimportant, but the thoughtfulness of each girl and boy in that classroom and their teacher, Sister St. Albert, their inspiration, is well worthy of note.

Donations are still being accepted for the Flowers of Hope Campaign with proceeds going to the mentally retarded. Donations are accepted at Milton Community Credit union.

—People buy The Champion to read, and read The Champion to buy.



ESPECIALLY FOR THE FAMILY that likes to get their feet wet during lunch. This picnic table was one that wasn't used during the holiday weekend. It might be used more during the hot days of summer ahead.—(Staff Photo)

### Museum festival 1971 slated for July 10, 11

Friends of the Halton Museum decided to hold their second annual festival July 10 and 11, at a meeting Thursday. Chairman Ron Harris of Milton notes entertainment of various kinds will be available at the festival.

The museum curator and director were in attendance at the meeting. The group will meet again June 3 at the county buildings and according to Mr. Harris, the group is happy to have new members join.

**All given jobs**  
Each member has been assigned jobs to do and these jobs will be discussed and coordinated at the next meeting.

Area representatives are for Acton Mrs. Earl Cooper, Esqueping John McDonald, Georgetown Mr. and Mrs. Graeme Goebelle, Oakville Mrs. Anita Cowan, Burlington Mrs. Helen Sovereign, Nassagaweya Mrs. Mary Chisholm, Campbellville Mr. and Mrs. Gord Agnew and Milton is represented by members of the IODE, namely

Mrs. Gordon Gowland, Mrs. Margaret Sproat and Mrs. Norma Clarkson.

### Folk choir will entertain locally

The St. Andrew the Apostle Folk Choir will sing at the 9:30 and 11 a.m. Masses at Holy Rosary Church on Sunday, June 13, and will present a special folk concert in the school auditorium the same evening.

The group features 50 voices of young teens from the St. Andrew the Apostle Church in London. Formed in 1967, the group introduces a new form of liturgical music to the various parishes it visits. The choir has travelled to several towns and cities in Ontario as well as to the Maritimes, North Eastern United States, Ottawa, New Brunswick, Montreal and hopes to reach the

—Don't litter the streets. Be proud of your town.

—Walkathon participants are urged to contact their sponsors and get their collections in to the Halton and Peel Association for the Hearing Handicapped as soon as possible.

**If you live in MILTON it makes sense to buy your Volvo from GEORGETOWN BRITISH CARS**

First of all, you won't have to go out of your way later to get your Volvo serviced. Second of all, we back up our good location with our good reputation—for quality service, high trade-ins and fast delivery. So it would make sense to buy your Volvo from us, even if you didn't live nearby.

**GEORGETOWN BRITISH CARS**  
877-5235 Hwy. 7 Georgetown TOR. 364-2030

**J. R. Currie O.D.**  
OPTOMETRIST  
BURLINGTON MALL  
TELEPHONE 632-7788

**BILL'S AUTO BODY**  
269 MAIN STREET, MILTON  
878-2721 • 878-3251  
Complete Collision, Body Repairs & Refinishing. Also Custom Appliance Refinishing.

**MOBIL PAINT SALE 5.95 GAL.**  
Interior, Exterior Latex, Semi-gloss, Gloss, Floor Paint

**MOBIL SWIMMING POOL ENAMEL 10.95 Gallon**

**W. J. KOSKI LIMITED**  
11 Fulton St. Milton 878-9452

**FINAL 3 DAYS OF BIG SAVINGS DURING THE GARDENING SUPPLIES SALE AT MASTER FEEDS—STEWARTTOWN**

*This is The Time to Save on Your Spring Gardening Requirements - Sale Ends May 29 - Savings on*

- ★ Power Mowers ★ Rotary Tillers ★ Garden Tools
- ★ Barbecues ★ Garden Tractors ★ Lawn Seed
- ★ Lawn Fertilizer ★ Peat Moss ★ Fencing
- ★ And Dozens of Values

**WE RENT: ROTARY TILLERS • HEAVY WHEELBARROWS • POST HOLE AUGERS • LAWN ROLLERS**

**MASTER FEEDS STEWARTTOWN**  
YOUR ONE STOP FARM AND GARDEN CENTRE  
877-3512 877-7375  
Open Til 5 p.m. Monday to Saturday—Friday to 9 to End of June

# THURSDAY NIGHT SPECIALS

IN MILTON STORES  
Specials Valid From 6 p.m. To 9 p.m. Closing Thursday Evening Only

**HIP HUGGERS**  
Blue jean type, stripes, flowers and plain shades. Sizes 5-15. Reg. to \$13.  
**\$7 AND \$9**  
THURSDAY NIGHT AT  
**PEGGY'S of Milton**  
25 Commercial St. Milton 878-3961

**CASUAL PANTS**  
Reg. \$10.95 **2** for the price of **1**  
THURSDAY NIGHT ONLY AT  
**Fredrick's**  
THE MAN'S SHOP  
222 Main St. Milton

Limited Quantity—**JUMBO PLASTIC GARBAGE PAILS**  
With locking lid. 15 Gal. size  
REG. \$5.75 — THURSDAY NIGHT **\$4.99**  
**MILTON DOMINION HARDWARE**  
227 Main St. Milton 878-2353

THESE STORES OFFER A SPECIAL REASON FOR  
**Shopping Thursday Night**  
Ask for the Thursday night specials at participating stores and start REAL SAVINGS.

**3 ONLY FROM OUR COMPLETE STOCK OF MATTRESSES 1/3 OFF**  
**Richardson's AND APPLIANCES**  
201 Main St. Milton

**WILKINSON BLADES**  
Packages of 5 suggested list 75c Thursday Night **3** pkgs. **\$1.00** for  
**ELSLEY PHARMACY**  
212 Main St.

**SMALL TOTS WINDBREAKERS**  
Nylon or cord lined **\$1.99**  
Sizes 2-6 fast colors  
THURSDAY NIGHT  
**MILTON DEPT. STORE**  
200 Main St. Milton

**ross brancier Jewellery**  
220 Main St. E. Milton 878-6341  
**3 ONLY ACCUTRON WATCHES**  
By Bulova  
PIERCED EARRINGS LATEST STYLES **25% OFF** Regular Price  
No. 1 135.00 **\$87.00**  
No. 2 150.00 **\$97.00**  
No. 3 180.00 **\$127.00**  
Other Indoor Specials Not Advertised.

**LADIES' BELTS**  
LEATHERS AND FABRICS REG. \$3. **\$1.44**  
**Syer's FAMILY FASHIONS**  
228 Main St. Milton

**TEEN JEANS**  
Limited Quantity in Sizes 28-36 Regular Value \$7.95-10.95 **\$4.99** THURS. NIGHT  
**Bus Knight's MEN'S WEAR**  
202 Main St. 878-4472

**MEN'S SISMAN SCAMPERS**  
Regular \$12.95 Thursday Night Special **\$9.77**  
**BOB BARTLETT'S FINE FOOTWEAR**  
250 Main 878-3501

**Special Reductions for Thurs. Night Only**  
**CRIMPLENE 10% OFF** All Marked Prices  
**SEREDA LINEN 45"** \$1.29 yd.  
**SPECIAL BLACK DENIM** \$1.49 yd.  
AT  
**MILTON FABRIC CENTRE**  
12 Martin St. Milton 878-6861