

Man-made showcase opens soon

Less than two years ago there was only water, but now on Lake Ontario, south of Toronto's Canadian National Exhibition grounds, there looms the 96-acre Ontario Place complex. Today, passersby can see the space-age silhouette of the five-pod Ontario Place pavilion, the domed Cinesphere theatre, and the 46 acres of landscaped man-made islands that constitute the new exhibition showcase of the province and its people. It opens officially May 22.

The daring proposal of creating this entirely new Government of Ontario complex on the Toronto waterfront was first announced on August 16, 1968, by Prime Minister John Robarts, when he officially opened that year's Canadian National Exhibition. It would, he said, "utilize the natural setting of the waterfront, modern structural designs, and attempt to create the mood of gaiety and openness which helped make so popular the Ontario Government pavilion at Expo '67."

Inspire others
"We would hope that the creation of this Government

complex would be the impetus required to inspire other developments along the entire Metro Toronto waterfront," he stated. The vision began its transformation into reality on March 17, 1969, when construction started on the complex on the lake. To create the two man-made islands at Ontario Place, more than 2,500,000 cubic yards of fill were needed, with as many as 1,800 truckloads of fill being dumped each day. By opening day almost 30,000 trees, shrubs and plants will be in the ground; 17 acres of grass will have been sowed; 3.4 miles of pathways will have been constructed; almost half a mile of beaches will be graded and contoured. Then the east and west islands of Ontario Place will be ready for the people of Ontario, May 22.

Modern theatre
The West island at Ontario Place is visually dominated by Cinesphere, a triodetic, dome-shaped theatre. One of the most advanced theatres in the world, it uses a giant 60 x 80 foot screen, a projection capability which ranges from 16 mm. through 35,

and 70 mm., to the giant, Ontario-developed "Imax" projection system which fills the entire screen, and a 24-track stereophonic sound system with 55 speakers.

Four major new films showing the people and places of various parts of the province will be shown. Three of these, dealing with northwestern Ontario, eastern Ontario and the Ontario waterways, have been filmed and are now in the editing stage. Shooting is now being completed on the fourth film, featuring north-central Ontario. In addition, Academy award-winning Christopher Chapman's new multiple-image film on Ontario, highly-praised as Osaka's Expo 70, will have its first North American public showings at Ontario Place's Cinesphere.

The east island is the location of The Forum, an 8,000-capacity outdoor amphitheatre. Here visitors will see daily programs of live performances. The emphasis will be on Ontario and other Canadian entertainers and groups, including concerts by the Toronto Symphony Orchestra, folk dancing, pop and rock music

and other events. A province-wide amateur talent hunt is now under way, to provide opportunities on stage at The Forum for aspiring performers from all over Ontario.

Large marina
Both islands will have gay-colored clusters of restaurants, snack bars and boutiques, as well as ample picnic areas and beaches. To welcome sailing visitors to Ontario Place there will be one of the largest, most modern and best-equipped marinas on the Great Lakes. Final dock assembly is slated for the spring. It will have 302 slips in five varying sizes, accommodating boats up to 60 feet in length. Alongside the marina is a seafood restaurant and a sailors' pub. Adding to the nautical flavor at Ontario Place, two distinguished ships will use the site as "home port" — the brigantine Pathfinder and the World War II destroyer Haida, a veteran of the Murmansk run and of service with the United Nations in Korea.

Raising spectacularly between the east and west islands is the Ontario Place Pavilion,

dramatically designed with five modular units, or "pods", suspended above Lake Ontario from 105-foot-high steel columns. In four of the five pods, a mixed-media exhibition tells the story of Ontario and its people. Entering the Pavilion on a two-tiered walkway, the visitor first encounters the Welcome Wall, a huge spider-like structure of stainless steel which is an information centre, staffed by Ontario university students acting as hosts and hostesses.

Watch earth form
In the same exhibit pod is "Genesis", a total-environment exhibit using three-dimensional film and sound. Here the visitor "eye-witnesses" the actual formation of the part of the earth that is now Ontario, sees its rivers, lakes, forests and plains being formed. In the next pod, called "Explosions", the viewer is surrounded by a spectacular total audio-visual environment. He experiences 300 years of Ontario's economic growth, sees the sights and hears the sounds of Ontario's development. At one point, he will feel that he is actually riding in a train, as the railway's influence is depicted. The exhibit traces events right up to today's "age of technology" with new advanced industries, electronics, rapid communications system and new processes of power production that is enjoyed in today's Ontario.

The next pod contains "Ontario Style". Here through the use of unique mixed-media, the visitor becomes an actual part of the times he is seeing. To move through the exhibit he must walk between and push past inflated human-size forms on which are projected live images representing soldiers, settlers, Indians, historical figures. At one point, he literally walks through and is part of battles in the Seven Years' War and the War of 1812.

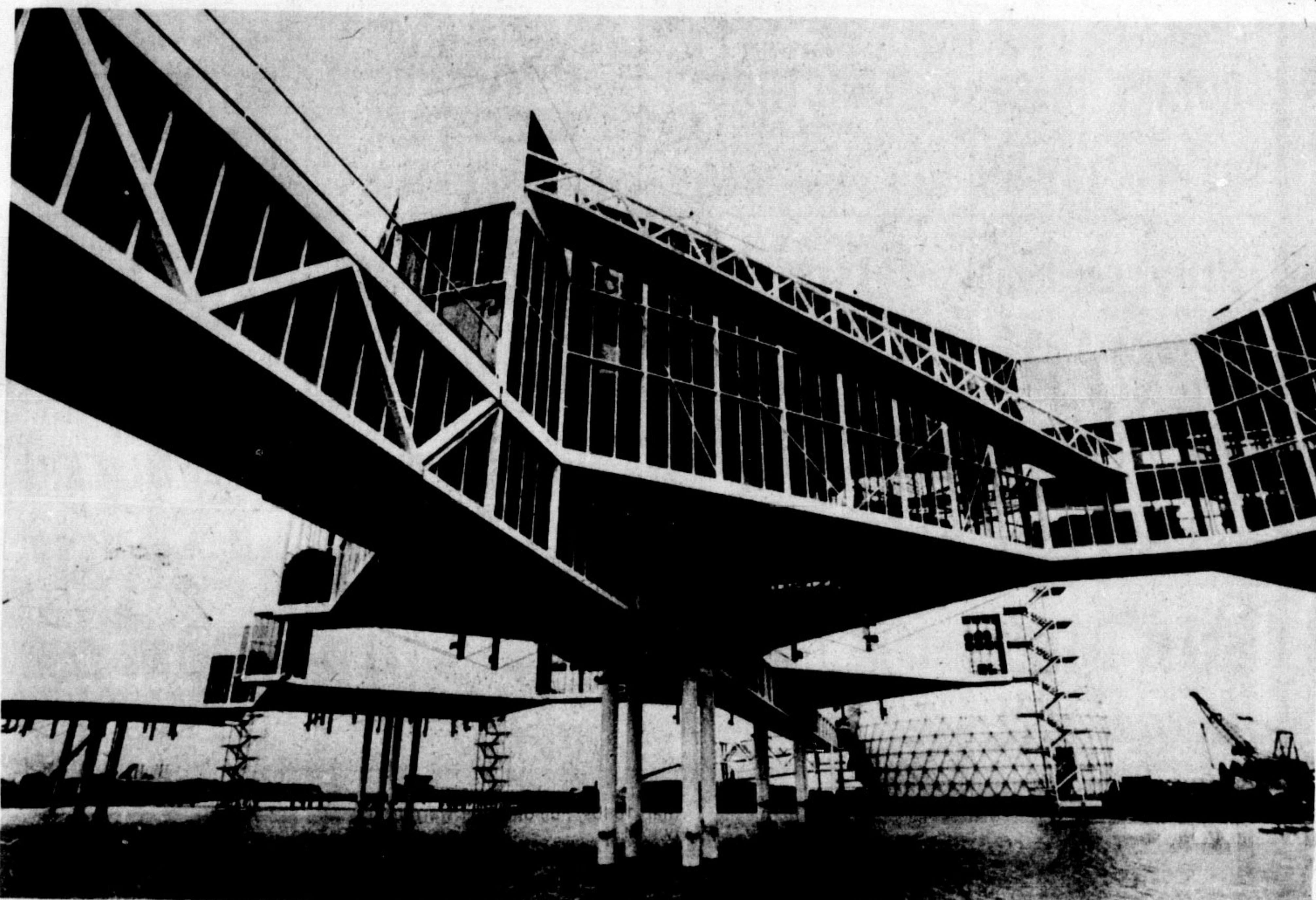
Meet challenges
The last pod is "Challenges", which through artifacts and interesting objects examines Ontario's cultural identity, education, leisure time, growth

and preservation of the environment. The exhibit shows how Ontario has met the challenges of the past and can meet them in the future. The challenges of youth provides a look at Ontario through the eyes of the young: 288 three-minute color films made especially for Ontario Place by elementary and high school students from different parts of the province depict the cities, towns and villages in which they live. Each film can be preselected for viewing. As a finale to the exhibit, the visitor sees a film about Ontario and its children, with a cast that includes as many as 35,000 school children from all over the province.

One of the pods, namely number two, is devoted to three restaurants, a licensed lounge and banquet facilities, in addition to an outdoor refreshment and snack garden with a view on the roof of the structure. The roofs of all five pods of the Pavilion may be used as observation areas by visitors, providing a delightful panorama of the entire site, as well as of the Toronto skyline and Lake Ontario.

Ontario Place opens officially May 22. It will be open seven days a week, from 10 a.m. till midnight, May 22 through October 11. "Ontario Place," says Mr. Robarts, "is a new focal point for our province. A festive, exciting and informative place; a place which demonstrates a new attitude to our lakefronts; a place which offers a tremendous variety of activities to meet the variety of interests held by people from all across our province and beyond."

HEARING PROBLEM
Is your child slow in learning to speak? It's quite normal for a child to mispronounce some words or hesitate occasionally. But, if he has an articulation problem or poor understanding, a hearing problem may be causing his difficulties. Find out by contacting your doctor or hearing and speech centre during May, Hearing and Speech Month.



SAILOR'S-EYE VIEW of one of the five giant pods which make up the Ontario Place Pavilion. A 300-foot, two-level bridge (foreground) leads into first exhibit pod. 800-seat triodetic domed theatre, Cinesphere, can be seen in

background. Ontario Place, 96-acre complex in Lake Ontario, south of Toronto's Canadian National Exhibition grounds, officially opens May 22.

—Accident prevention personnel of Milton OPP recently spoke on bike safety to 434 students at Pineview, Norval and Glen Williams public schools.

—Use Champion "for rent" ads if you have accommodation available. A recent ad brought 50 calls to an advertiser.

MATADOR
4-Door Sedan

BIG FAMILY SIZE
AT A PRICE THE FAMILY CAN AFFORD

4-Door Wagon
Lots of Room For 6 Passengers

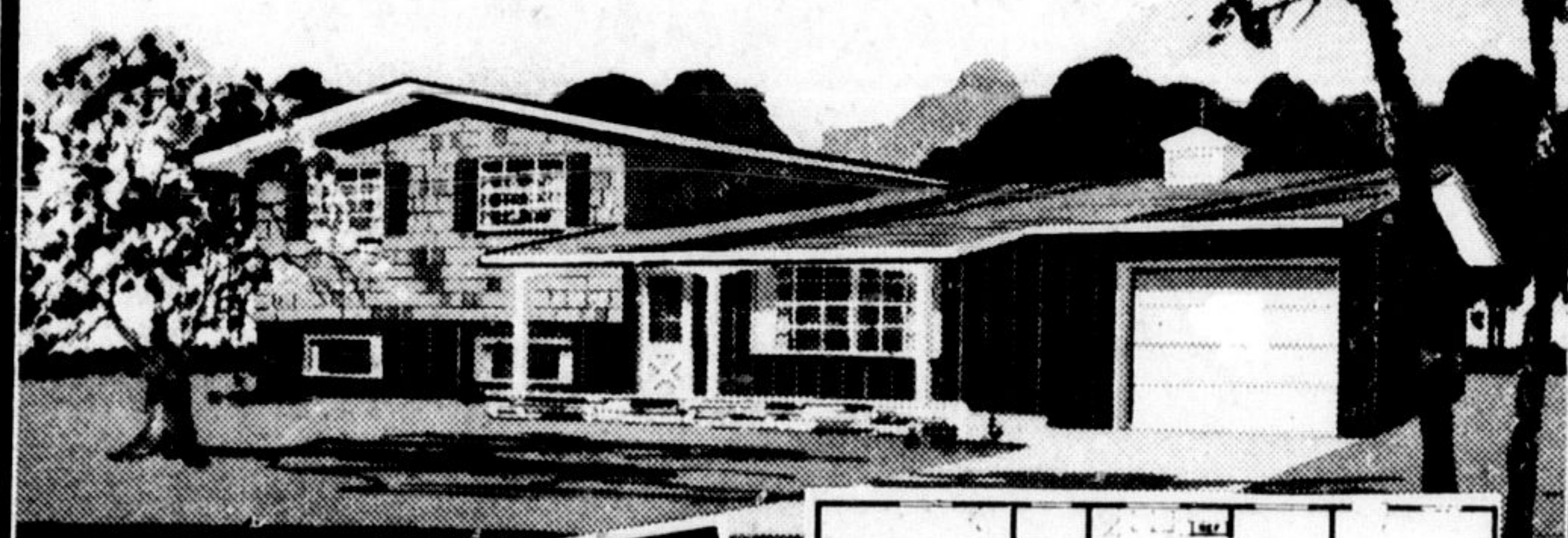
2-Door Hardtop

An Intermediate Priced Car By American Motors of Course at

Allan Clements & Son
Bronte Street E., 878-2328 Milton.

Thousands of Canadian families have solved their housing problems the Colonial/Sunnibilt way...

...this could be your year!



The Melrose Split Level—Living Area 912', garage (optional) 288'—3 bedrooms
Model Illustrated
\$7100
other models from \$3,665.

"FULL COLOUR CATALOGUE 'Homes for better living'"
36 Exciting Plans
Beautifully portrayed in full colour—a panorama of Colonial Homes—in a BUNGALOWS • SPLIT LEVELS • SPLIT FOYER • 2-STORY • APARTMENTS • TOWN HOUSES • Each with floor plan.
SPECIAL BONUS OFFERS NOW IN EFFECT!

MAIL THIS COUPON TODAY
Please send me "Homes Catalogue" - 50¢
NAME _____
ADDRESS _____
CITY _____ PROV. _____

3 Display Courts "Supermarket of Prefabs"

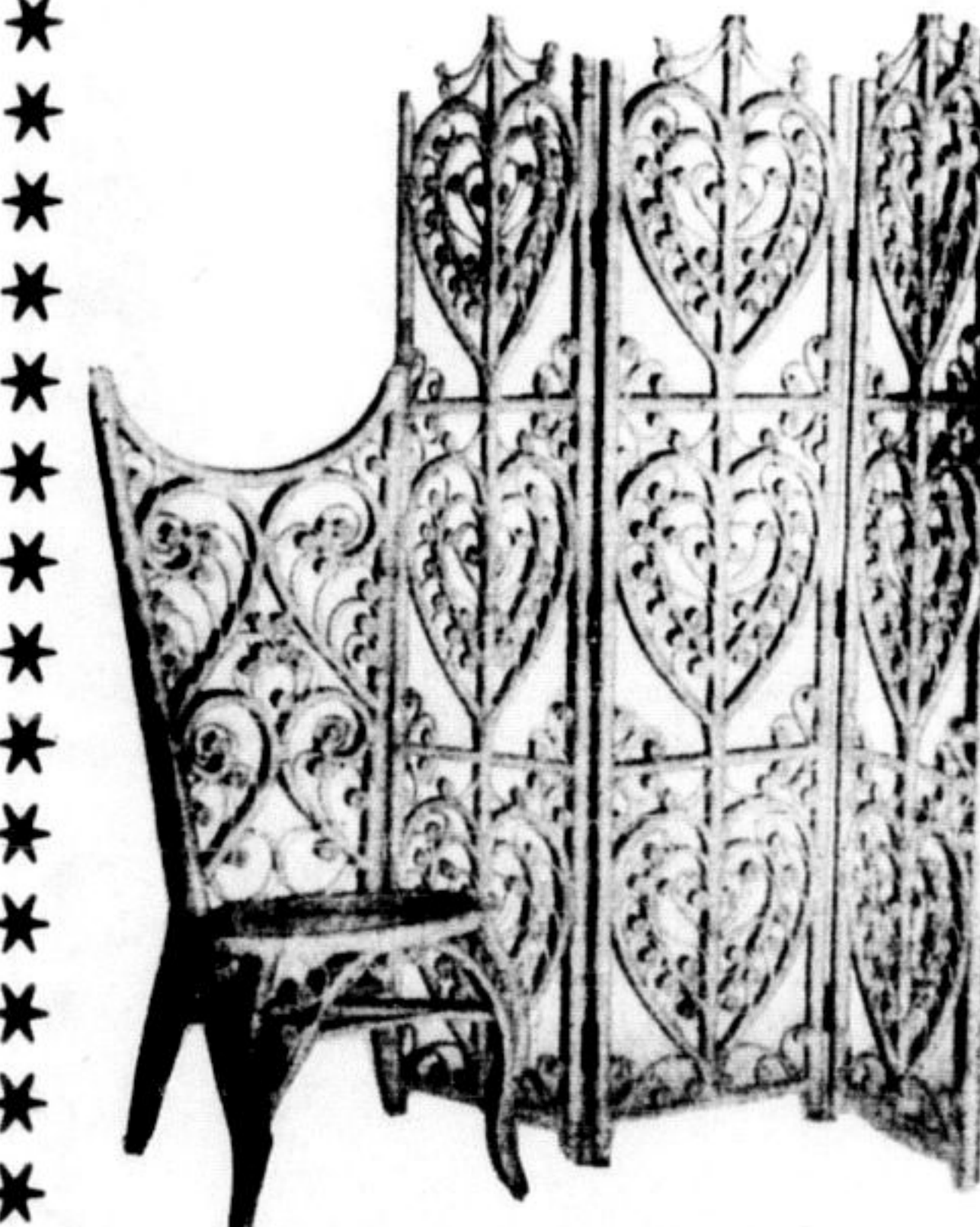
WEST: 32 CALEDONIA RD., TORONTO (Just North of St. Clair Ave.) PHONE 531-2459 or 531-2666
NORTH: 26 SAMOR RD., TORONTO (4 Blocks South of Hwy. 401, off Dufferin) PHONE 781-6141
EAST: 3392 KINGSTON RD., SCARBORO (Near Markham Rd.) PHONE 261-6137

Canada's Largest Manufacturers of Vacation Cottages • Homes • Apartments • Garages • Specialty Structures
3 Plants and over 40 Dealers serving Eastern Canada and Northeastern U.S.A. for more than 20 Years

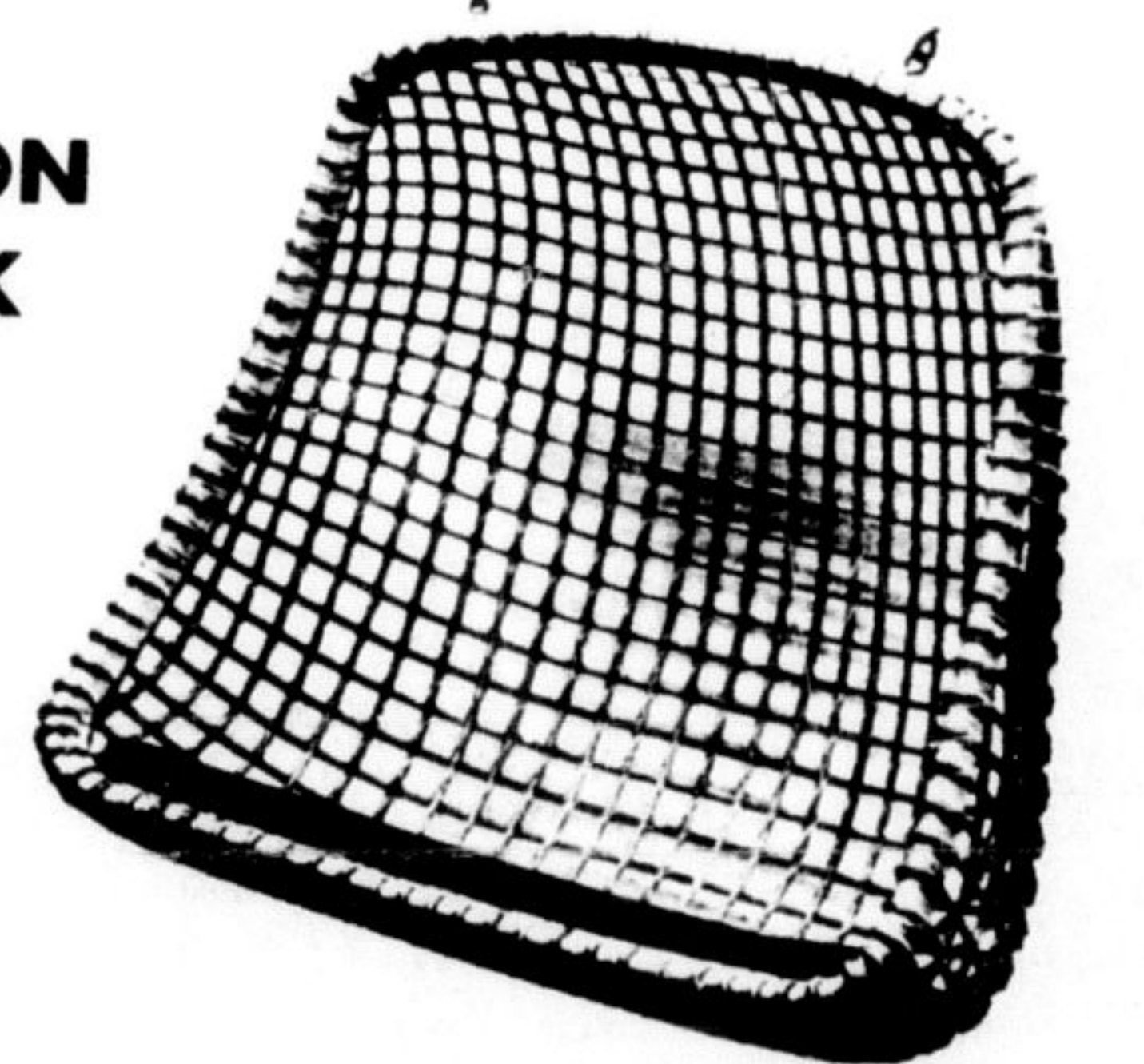
IMPORTED CHINESE RATTAN BAMBOO TEAKWOOD FURNITURE
NOW AVAILABLE IN MILTON AT
★ TOWN AND COUNTRY TV



Excellent for Apartments - Patios - Cottages - and Unique Bedroom Groupings.



LARGE SELECTION NOW IN STOCK



EXCLUSIVE DEALER IN MILTON AREA

GAS RANGES AND APPLIANCES

Look for our OPENING SPECIALS on Tappan ranges, RCA washers and dryers, Tappan refrigerators, Enterprise ranges, and many more.

We'll have a large stock of gas ranges on display at our new store soon, some with solid state ignition which does away with the pilot light.

Enterprise ranges come from an old, all-Canadian company. They feature extra heavy construction.

YOUR ELECTROHOME AND SONY DEALERSHIP

★ TOWN and COUNTRY TV

R.R. 3 MILTON

Paul Rutledge, Prop.

878-4633

Located on the east side of Highway 25 just two miles north of Milton.

★ Town and Country is moving Soon to a New Store next to L.C.B.O. on Main St. in Milton and will change the name to "RUTLEDGE BOUTIQUE"

★ ★ ★ ★ ★