



A CHRISTMAS BUS SERVICE was inaugurated in Milton Friday by Milton Chamber of Commerce and hourly routes around town are running daily (except Sundays) until Dec. 24 to help bring shoppers to the downtown and plaza stores. Among the first to use this free bus service Friday morning were Mrs. Margaret Brush of 349 Martin St. and her children Beth and Billy. They are shown being welcomed by Tyler Transport bus driver Stu Westall and Ron Harris, who was chairman of the bus committee for the sponsoring Milton Chamber of Commerce. —(Staff Photo)

Not used enough

Close Kilbride Hall

By Bob Burt
After playing an integral role in community life in the village for an estimated 75 years, Kilbride Hall will cease to function as a public hall tomorrow (Thursday) when the doors are shut for the last time.

Once a beehive of activity, the hall isn't used enough now to warrant its existence. The nominal rent paid by the two groups using the hall isn't enough to pay a caretaker, let alone pay for the extensive repairs required to put the hall into good shape.

Public meeting
A public meeting held at the hall Wednesday to discuss the future accurately reflected the

lack of interest. A small crowd of no more than 25 people attended the meeting.

After discussing the problem the hall board members and others at the meeting were unable to establish an alternative to closing the hall. It was hoped the meeting would stimulate interest and bring people back into the hall.

Will close

The hall will be closed tomorrow and put up for sale Jan. 1. If no buyers are interested by the spring, the hall will likely be torn down.

The two groups using the hall will now be accommodated in Kilbride School, providing

arrangements can be made. The Good Neighbor Euchre Club and the Cubs and Scouts are the only patrons of the old hall.

"I hate to see the old hall go. It's been there for so long now," Hall board secretary John Inglis commented.

Changing community

He noted community life was changing and the people in the community don't rely on neighbors for entertainment any more. "Now even young people have cars and can go to Burlington or Milton or wherever they want to go," he said.

He recalled a time when the hall was used for showers, dances and meetings of one kind or another. "Even the teen group that was in the community for years is gone now," he commented.

"The old people will be sorry to see it go", Mr. Inglis said, "but there are a lot of new people in the community and they have never got involved with it," he said.

(Continued on Page 10)

Publish Tuesdays

Early issues for holidays

To ensure delivery of The Champion to subscribers in time for the holidays, the publication dates and all deadlines for the next two issues have been altered. Next week's paper will be issued one day early, on Tuesday, Dec. 22 and the following issue will again be on the streets a day earlier than usual, Tuesday, Dec. 29.

Deadlines for the Dec. 22 issue will be: Display advertising, 5 p.m. Friday, Dec. 18; news items, 10 a.m. Monday, Dec. 21; classified display ads, noon Saturday, Dec. 19; classified word ads, noon Monday, Dec. 21. As this issue will contain a special "Christmas greetings" section, advertisers who wish to select a greeting message from the illustration book must contact The Champion no later than noon this Friday, Dec. 18.

Dec. 29 issue deadlines will be: Display ads, noon Thursday, Dec. 24; news items and classified display ads, 10 a.m. Monday, Dec. 28; classified word ads, noon Monday, Dec. 28.

The Champion office will be closed all day Friday and Saturday, Dec. 25 and 26, and again on Friday and Saturday, Jan. 1 and 2, for the holidays. Your co-operation in meeting these deadlines will ensure publication of the newspaper on schedule.

Five escape unhurt fire guts home on N. Oakville farm

Five men escaped uninjured as fire ripped through a house and numerous buildings owned by Lee-Chong Farms and Wong Bean Sprouts on Derry Rd. near Hornby early Friday morning. Milton Fire Department answered the alarm at 1.30 a.m. and two Oakville trucks and five more men were dispatched to assist.

The buildings were ablaze when firefighters arrived and rubble was still smouldering when crews left five hours later.

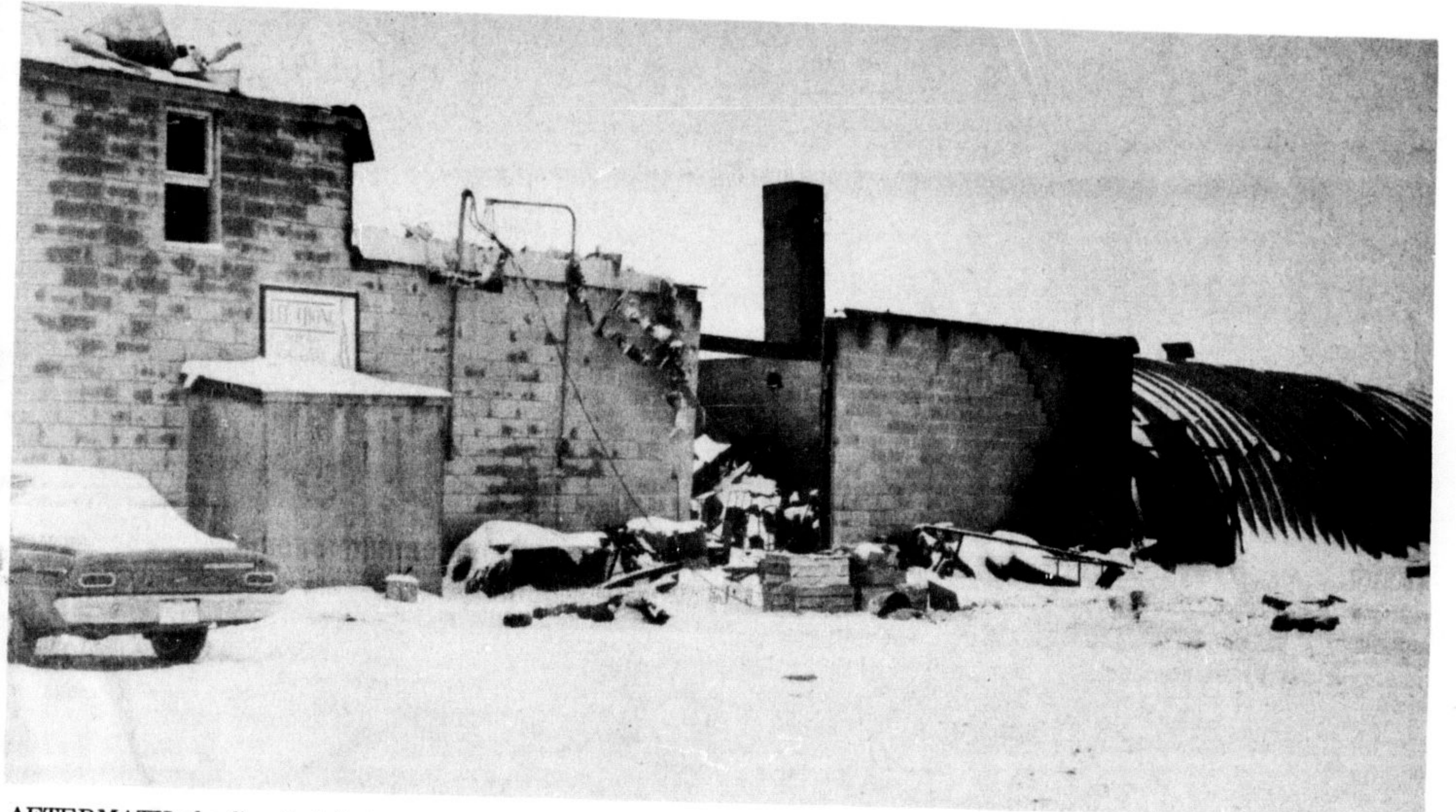
Cause of the fire is unknown. A quantity of machinery and vegetables were lost in the inferno.

Losses heavy

Fire Chief A. E. Clement is still investigating the cause of the blaze. Although there were no official estimates available, loss is expected to total over \$100,000.

A chimney fire was also extinguished at the home of Gordon Hilson in Milton Heights on Friday. Little damage has been reported.

A smoking fuse panel was the cause of another fire alarm at Ontario School for the Deaf on Saturday. The fire was quickly extinguished and cause is undetermined.



AFTERMATH of a fire that destroyed Lee Chong Farms and Wong's Bean Sprouts on Derry Rd., Hornby, and resulted in a loss of \$150,000 is shown. Five Chinese farm workers escaped

the blaze which gutted the buildings and house early Friday morning. Cause of the blaze is still unknown.—(Staff Photo)

Expect strong opposition if village school closes

The future of Campbellville Public School, while not immediately in jeopardy, is not a bright one. The three room junior school is one of the few small units left in Halton County. Such small units are expensive to operate and do not fit in with the philosophies of the county boards of education.

Trustee Tom Watson brought the matter to light at a meeting of the Halton County Board of Education Thursday in Oakville when he asked if there were any consideration given to closing Campbellville School down and expanding Speyside school to handle those children now attending classes at Campbellville.

In answer to his question Director of Education Jim Singleton said the problem had been considered for some time. He agreed the tidy way to handle the problem would be to close Campbellville P.S. and spread the student population in the village between Kilbride and Speyside schools.

However the director noted, "Campbellville school has been there for a long time and I'm sure there would be strong opposition against any move to close it."

Money tight

The Director pointed out a tightness of money which made the prospect of creating more room at Speyside or Kilbride impractical when there was

space already in the Campbellville school.

After the meeting Mr. Watson, who represents Acton and Nassagaweya on the Board, said he wasn't advocating the move but wondered if the administration had considered the possibilities of closing the school. However, he pointed out that three room schools were out of date and some day something would have to be done. "There's no room to expand the Campbellville School," he noted.

—The Chamber of Commerce free shoppers' bus was welcomed by many when they saw the drifts of snow outside.

Traditional ceremony

Who will be chosen to ring year 1971?

Bell ringing?

The now-traditional ringing of the town bell to greet the new year is fast approaching with not a candidate for the honor in sight.

It all started when the 1967 Centennial year was rung in on the spur of the moment by publisher Jim Dills, alone in the bell tower.

Reeve, Mayor volunteers

The next year Reeve A. Ledwith volunteered to ring in 1968 and a crowd began gathering on the street, huddling in the cold for a round of Auld Lang Syne. By the end of that year Mayor Brian Best was ready to ring in 1969 and with it the annexation of hundreds of new acres to the town's boundaries.

Last year Sydney Childs, a man who had been mayor of Milton for most of the '60's rang in 1970. The event had grown over the years to include instrumentation like a cornet and bass drum, the crowd had grown to a group large enough to fill the Charles-Main intersection for Auld Lang Syne and the crowd gathered early and huddled in the lobby of the town hall ready to race out and greet the new year as the bell pealed high above.

Seek suitable ringer

As the season approaches The Champion, the unofficial promoter of this little episode, is looking for a suitable and willing candidate for this year's bell ringing.

If you've got one, let us know. If you think this whole piece of nonsense should be chucked, let us know that too.

Christmas centrepiece

Centrepiece for Milton's Christmas lighting decorations again this year is the giant community Christmas tree, erected beside the mill pond in Centennial Park on Martin St.

Hundreds of cheery lights radiate from the branches of the 35 foot high evergreen and set the theme for hundreds more colorful home lighting displays and the main street streamers and candy canes of color. The tree was placed at the park and decorated by the Milton Parks Board of Management.

443 riders on free bus three days

The Milton Chamber of Commerce bus service for shoppers has been pretty popular in its first few days of operation. It carried 443 passengers in the first three days—102 on Friday, 231 on Saturday and 110 on Monday.

Shoppers can catch a free ride to the stores (and home again) between 9 a.m. and 5 p.m., every day from now to Dec. 24, except Sunday.

29 accidents in six days

Collisions, tie-ups, fire in snow

Winter is here — and don't we know it. With snow starting on Thursday and continuing through the weekend, personnel at Milton Detachment of the Ontario Provincial Police were kept on the run investigating one accident after another.

Milton O.P.P. report a series of 29 accidents in a six day period ending Monday. While both town, county and provincial workmen were working overtime to keep the roads open, police still had more than they could handle in accidents.

Two trucks

Two trucks, one a tractor-trailer carrying Christmas trees and driven by Charles Doner of Chatham and a second driven by John Betchel of Galt were involved in an accident on Highway 401 Wednesday. Traffic was tied up for hours as a result of the crash.

The second truck was a Canadian Pacific Express and was damaged to the tune of \$43,000 — plus contents. Contents were burned when the propane tank in the heating unit exploded after the crash.

Doner was treated at hospital and released the same day. (Doner will soon hate that part of the 401 Highway. Just a year ago

he was involved in a similar accident less than a mile from the scene of this crash.) His vehicle incurred an estimated \$450 damage.

Cruiser hit

Later the same day four cars were involved in an accident on Highway 401 west of Highway 25. An estimated \$1,500 damage was done to a police cruiser. Constable Al Jordan had parked the cruiser on the shoulder of the highway to investigate an accident and a car slid out of control and into the parked cruiser.

Trucks lock

Police report \$1,000 damage to a dump truck owned and operated by Filippes Liakos of Toronto and only minor damage to a truck owned by Muscillo Transport of Mimico operated by Michele

Lamanunna. The two trucks locked on Highway 401 east of Milton and remained in the median for most of the day.

Six cars were involved in a pile-up Friday on Highway 401.

Cars driven by Milton Simons of Toronto, Al Gooderham of Toronto, R. J. Campeau of Kingstons, J. R. Dupuis of Milton, J. Lisjsten of London and Eric Reindort of London received from \$200 to \$600 damage in the series of rear end accidents. Both Dupuis and Reindort received treatment for minor accidents.



ONE MAN WAS injured and considerable damage done when two trucks were involved in a crash and fire on Highway 401 Wednesday. John Betchel of Guelph was taken to hospital for treatment. He operated a Canadian Pacific Transport truck. His cargo caught fire after the crash. The driver of the second truck, a propane gas tanker, was Charles Doner of Chatham.—(Staff Photo)

10 complaints over noise; seek co-operation

Police urge mufflers for snowmobiles

Snowmobiling enthusiasts in the Milton district may be ruining a good thing for themselves if they don't soon start paying more respect to the sleeping public.

According to Milton Police Chief Ray Andress the big snowfall over the weekend brought the snowmobilers out and his department was one of the first to hear about it. At least 10 persons complained about the noisy machines.

According to the chief the complaints ranged anywhere from televisions flipping to persons being awakened from their sleep during the night and as late as 3 a.m.

Letter to Council

In a letter the chief sent to council he outlined the problem and noted he did not advocate the abolition of the snowmobiles on town streets but felt the

snowmobile industry should take steps to have mufflers installed on all new machines. Owners of present machines should take similar steps, he said.

"They'll be doing themselves a favor," the chief noted. He indicated some municipalities have by-laws governing the use of the snowmobiles, and some ban them completely.

Under the present legislation it

is perfectly legal for licensed persons to drive within the speed limits on public highways.

The snowmobile act does stipulate, however, that persons operating the machines must have an operator's or chauffeur's licence to run them on public highways. If a person does operate one without a licence on public roads both he and the owner of the vehicle giving

consent to the user can be charged.

It is within the powers of the local municipality to enact legislation controlling the snowmobiles. The matter will be brought before Milton Council for their consideration.

Chief Andress noted the problem needed a co-operative effort if a reasonable solution was to be reached.